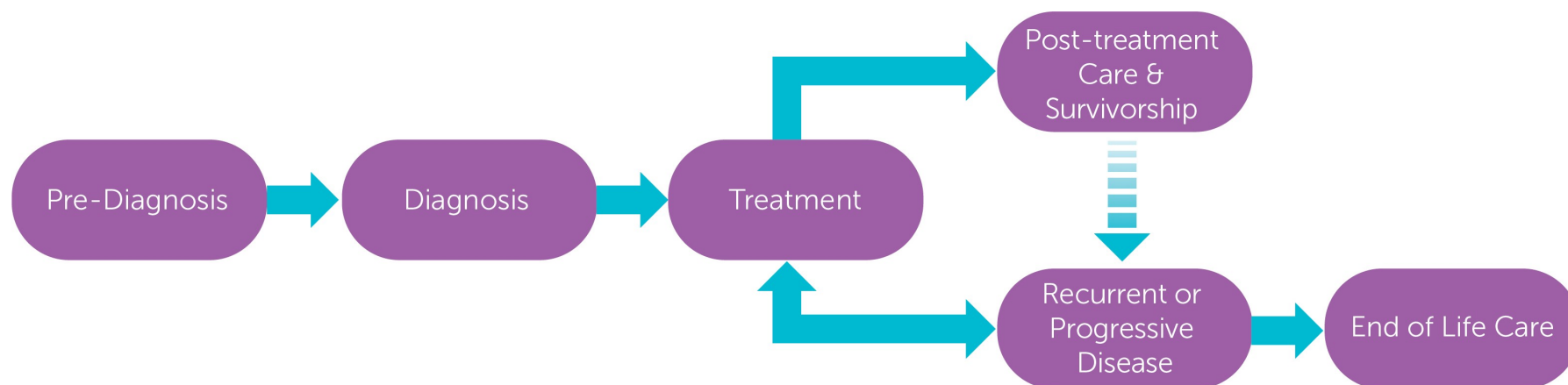


Gynecological Tumour Group - Epithelial Ovarian Pathway

Overarching Pathway

Consultation Phase



Primary Care Practitioners
(Family Practice)

Indigenous Cancer Care

Supportive Care

(Counselling, Psychiatry, Nutrition, Speech Language Pathology, Physiotherapy, Pain & Symptom Management/Palliative Care)

This figure represents a general pathway of care that most people with cancer will experience. It shows

- The major phases of a cancer journey
- How a person might progress through each phase
- Key supportive services that are available throughout each person's cancer journey

Please visit the [Clinical Pathways Web](#) page for

- Tumour Group Clinical Pathways
- Patient Companion Guide
- Methodology Reports

Target Population

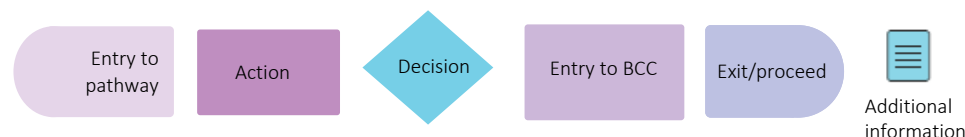
The target population for this pathway include health care providers such as primary care practitioners, oncologists, specialists, nurses, and other members of a health care team including allied health providers. Healthcare administrators across BC Cancer and the health authorities may also benefit from this resource for systems and operational planning.

Pathway Disclaimer

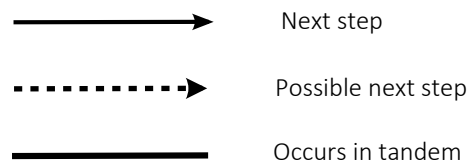
This pathway is an informational resource, intended to provide a high-level overview of the treatment journey a patient in British Columbia may receive. This pathway is not a substitute for medical advice and clinical judgment is still required as not all care trajectories will follow the proposed steps outlined in the pathway. This resource may not reflect all available evidence as research continues to evolve rapidly and BC Cancer is not responsible for any incomplete information. Furthermore, BC Cancer and those involved in developing this pathway are not liable for any incidental or consequential outcomes related to the information in this pathway. Anyone using the information provided in this pathway does so at their own risk.

Pathway Map Legend

Shape Guide



Line Guide



Pathway Map Considerations

This pathway is intended as a high-level resource and therefore does not include specific recommendations on specific systemic therapy protocols or radiation therapy doses. Instead, additional information can be sought via the inserted hyperlinks to resources that may aid a clinician in their treatment planning. The level of detail for each pathway was guided by the tumor group lead and intentionally kept high-level and represents the overall ideal pathway of care for a patient in general. Each patient will have individual needs and each cancer centre may have variation in the way care is delivered, but overall the intent was to represent the pathway that the majority of patients will follow.

General Resources

Indigenous Patient Navigator Referral Form(2): <http://www.phsa.ca/aboriginal-health-site/Documents/IPN%20Fillable%20Referral%20Form.pdf>
Supportive Care(15): <http://www.bccancer.bc.ca/our-services/services/supportive-care>
Compassionate Access Program(CAP) (3): <https://cap.phsa.ca/>
Gynecology Chemotherapy Protocols(4): <http://www.bccancer.bc.ca/health-professionals/clinical-resources/chemotherapy-protocols/gynecology>
Manufacturer Patient Assistance Programs(5): <http://www.bccancer.bc.ca/systemic-therapy-site/Documents/Policy%20and%20Forms/Patient%20assistance%20programs.pdf>
BC Cancer Research Clinical Trials(20): <https://www.bccrc.ca/dept/cid/clinical-trials>
Smoking Cessation Program(43): <http://www.bccancer.bc.ca/health-professionals/clinical-resources/smoking-cessation-program>
Alcohol Reduction(44): <http://www.bccancer.bc.ca/prevent/alcohol/reduce-your-risk>
MDC Referral Form(6): <http://www.bccancer.bc.ca/books/Documents/Clinical%20Care%20Pathways/Patient%20Conference%20Order.pdf>
Pharmacy Contact Info(7): <http://www.bccancer.bc.ca/health-professionals/clinical-resources/pharmacy#Contact--info>
Language & Translation Services(45): <http://www.phsa.ca/health-professionals/professional-resources/language-services/translation>
BC Cancer Library(46): <http://www.bccancer.bc.ca/our-services/services/library>
Health Connect Registry(47): <https://www.healthlinkbc.ca/find-care/health-connect-registry>

Abbreviations

BCRA: BReast CAncer Gene
EOL: End of Life
FP: Family Practice
HGS: High-Grade Serous Carcinoma
IHC MMR: Immunohistochemistry Mismatch Repair
MDC: Multidisciplinary Conference/Discussion
MRP: Most Responsible Provider
PCP: Primary Care Provider
PFC: Patient & Family Counseling
PSMPC: Pain & Symptom Management & Palliative Care
RT: Radiation Therapy
ST: Systemic Therapy

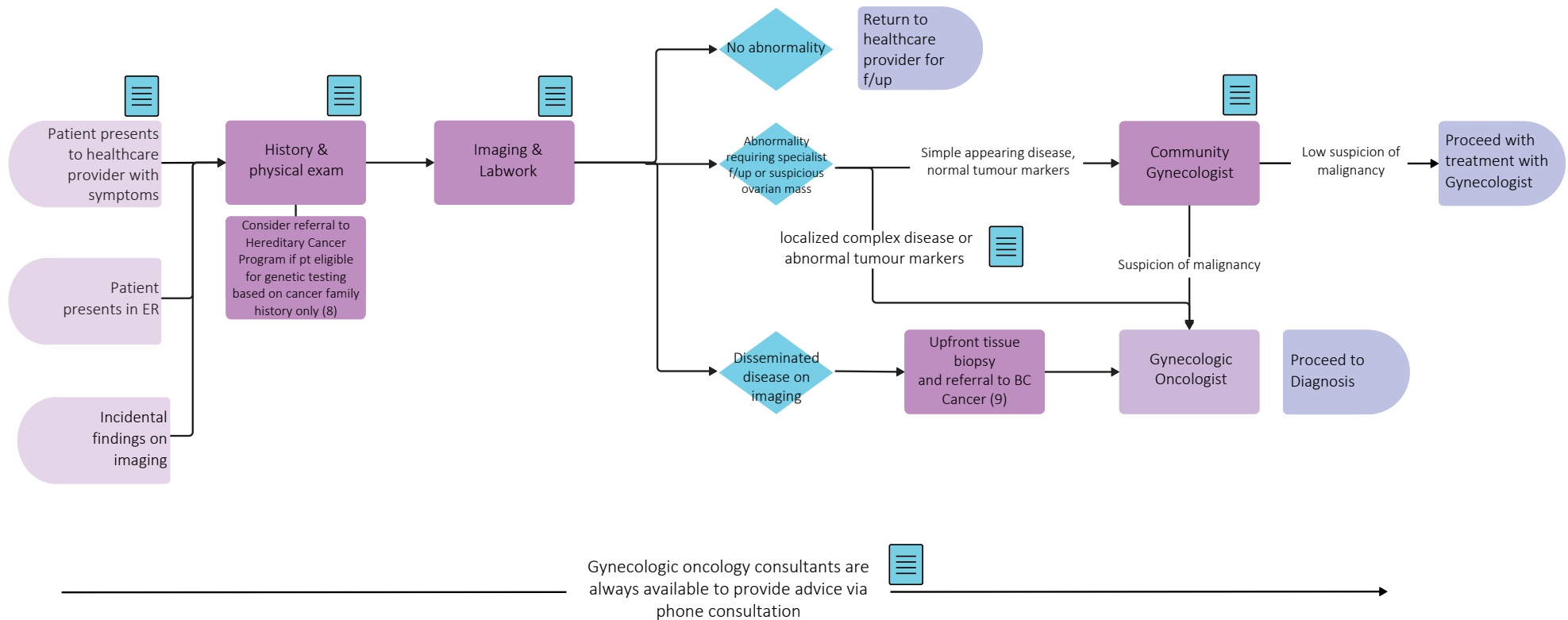
Additional Information

To learn more about how the Clinical Care Pathways are developed, visit the [Methodology Report](#).

Other Tumour Group Clinical Care Pathways can be found on the [BC Cancer Website](#).

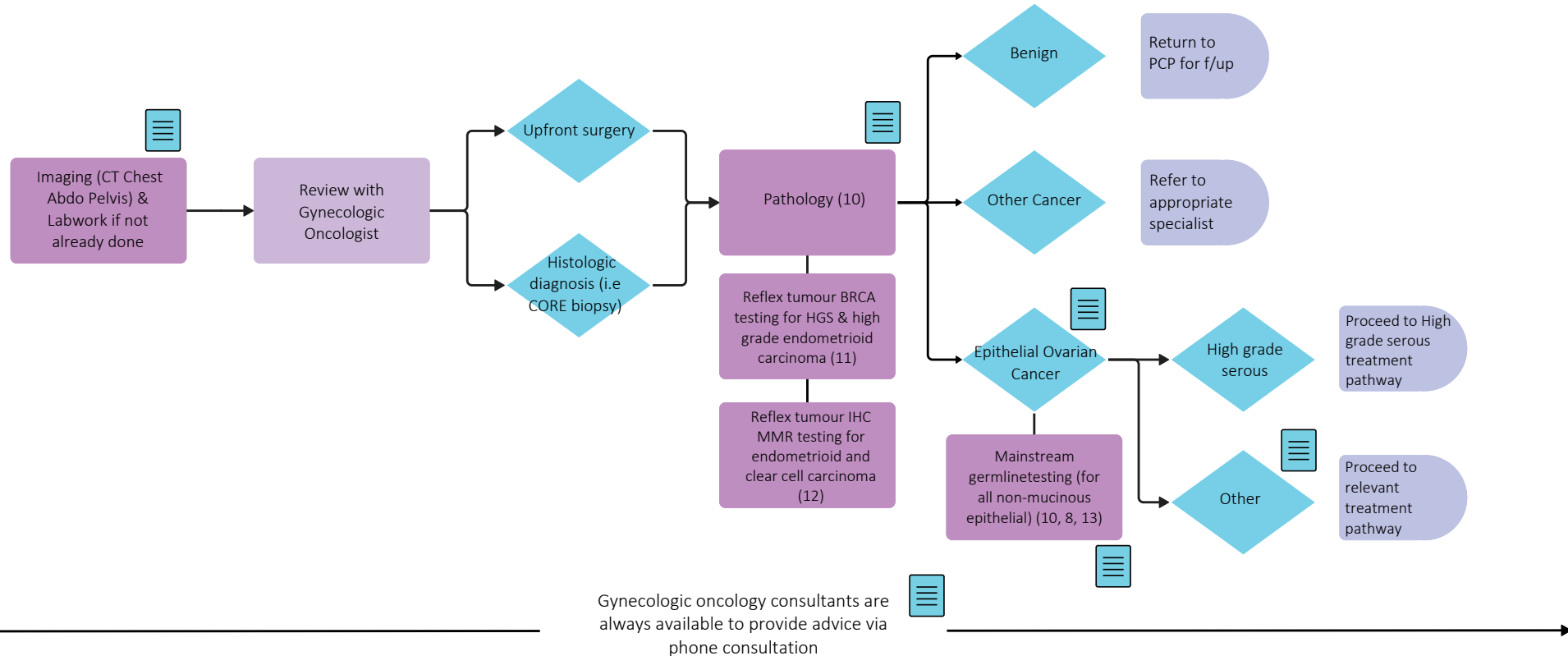
Gynecological Tumour Group - Epithelial Ovarian Pathway

Pre-Diagnosis



Gynecological Tumour Group - Epithelial Ovarian Pathway

Diagnosis (suspicion of malignancy)

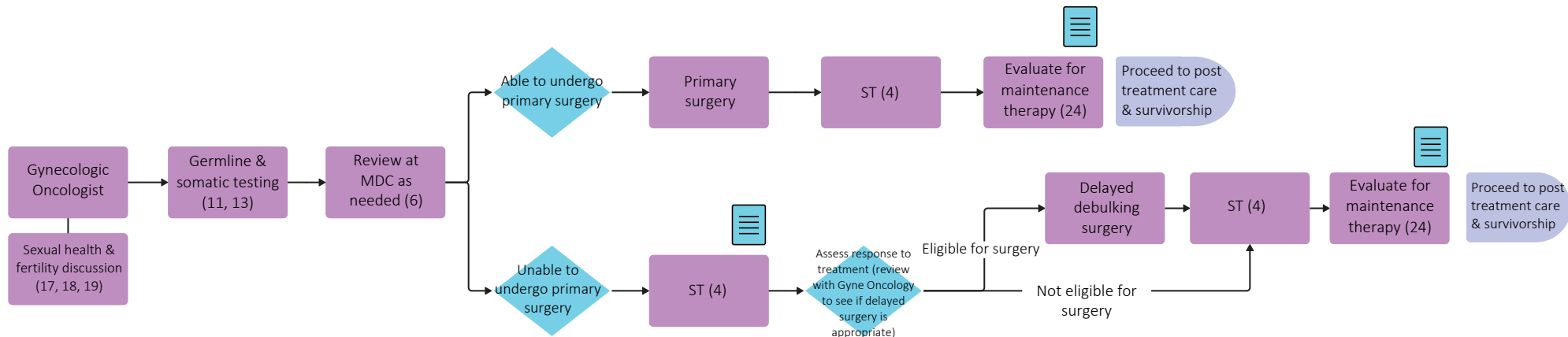


Throughout treatment, consider...

Regular symptom & performance status assessment (14); Supportive care (15, 16); Sexual & reproductive health (17, 18, 19); Co-morbidity management & medication review; Risk factor mitigation; Clinical trials (where applicable) (20, 21); Goals of care (22); Cultural safety (2); Involvement of PCP; Consider referral to Hereditary Cancer Program based on pt's family history (8)

Gynecological Tumour Group - Epithelial Ovarian Pathway

Treatment - High Grade Serous Ovarian Cancer (23)

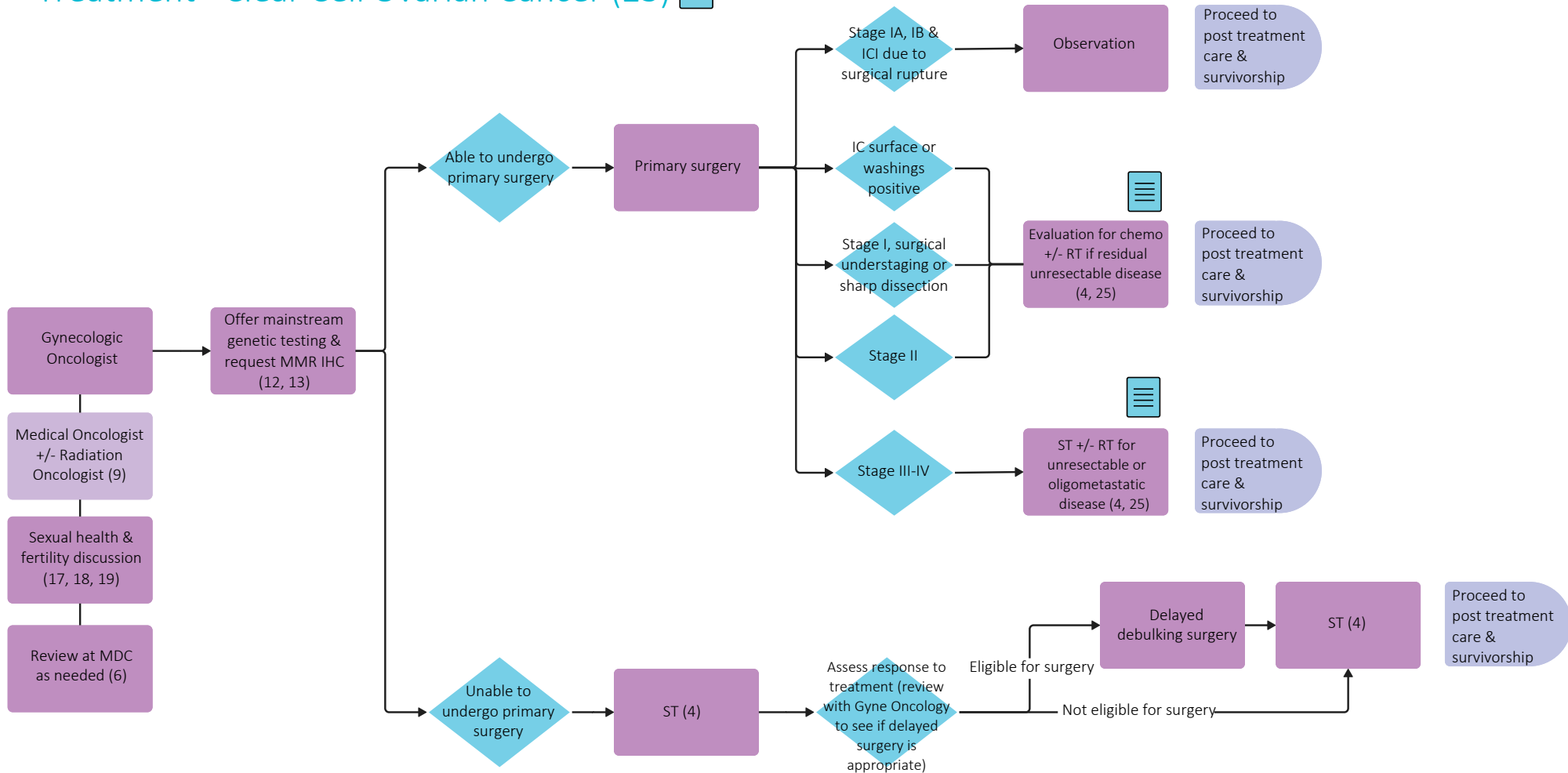


Throughout treatment, consider...

Regular symptom & performance status assessment (14); Supportive care (15, 16); Sexual & reproductive health (17, 18, 19); Co-morbidity management & medication review; Risk factor mitigation; Clinical trials (where applicable) (20, 21); Goals of care (22); Cultural safety (2); Involvement of PCP; Consider referral to Hereditary Cancer Program based on pt's family history (8)

Gynecological Tumour Group - Epithelial Ovarian Pathway

Treatment - Clear Cell Ovarian Cancer (23)

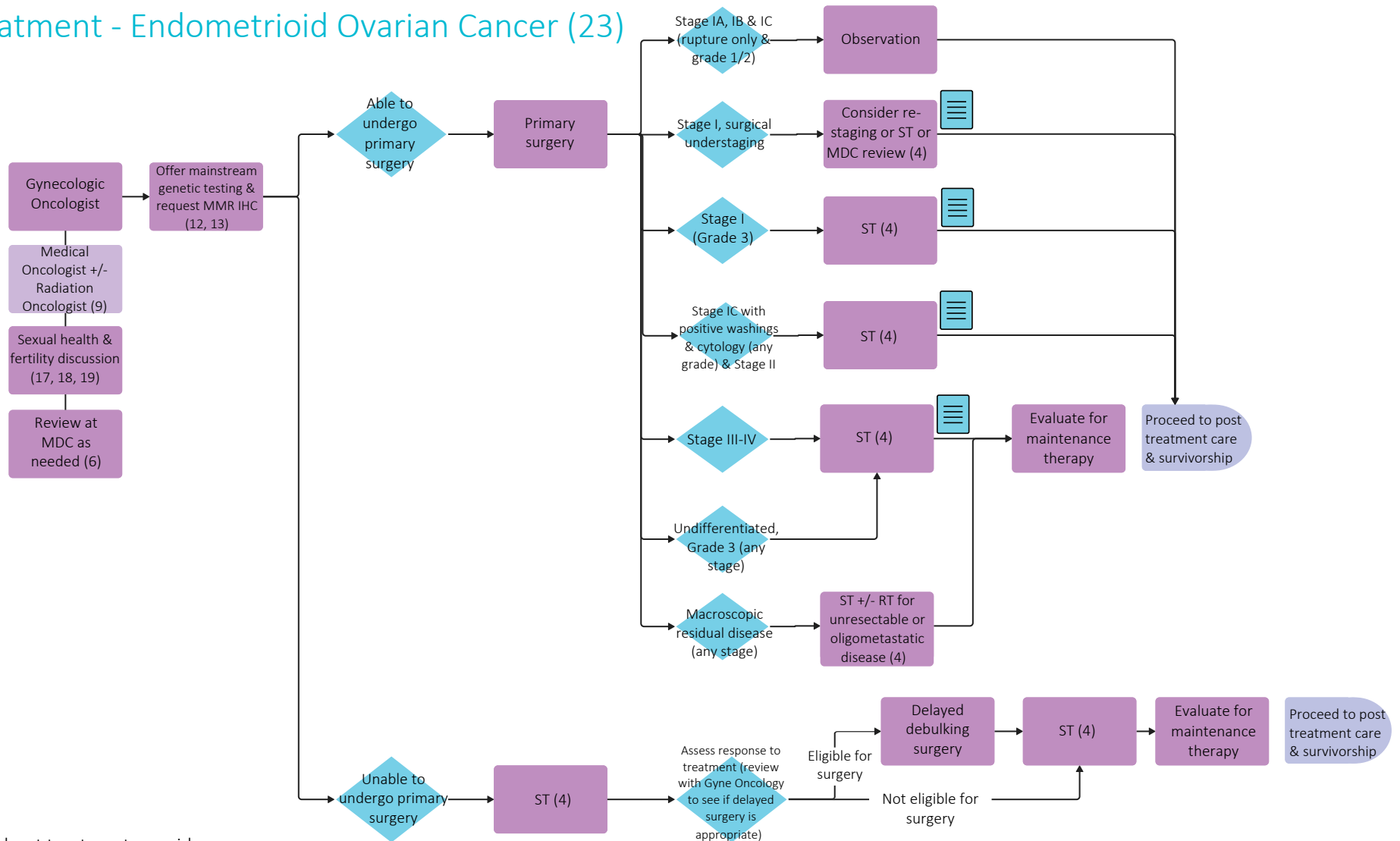


Throughout treatment, consider...

Regular symptom & performance status assessment (14); Supportive care (15, 16); Sexual & reproductive health (17, 18, 19); Co-morbidity management & medication review; Risk factor mitigation; Clinical trials (where applicable) (20, 21); Goals of care (22); Cultural safety (2); Involvement of PCP; Consider referral to Hereditary Cancer Program based on pt's family history (8)

Gynecological Tumour Group - Epithelial Ovarian Pathway

Treatment - Endometrioid Ovarian Cancer (23)

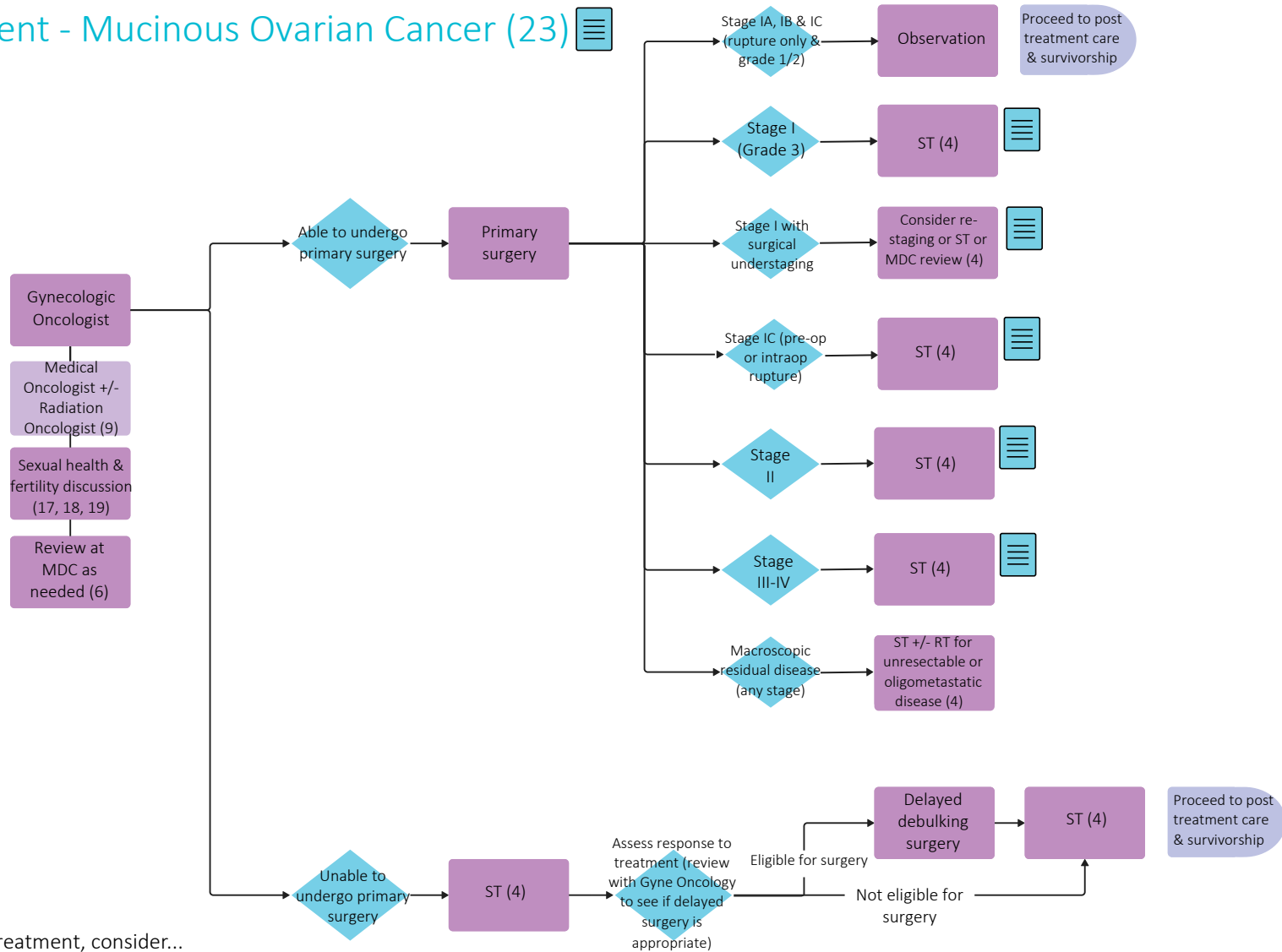


Throughout treatment, consider...

Regular symptom & performance status assessment (14); Supportive care (15, 16); Sexual & reproductive health (17, 18, 19); Co-morbidity management & medication review; Risk factor mitigation; Clinical trials (where applicable) (20, 21); Goals of care (22); Cultural safety (2); Involvement of PCP; Consider referral to Hereditary Cancer Program based on pt's family history (8)

Gynecological Tumour Group - Epithelial Ovarian Pathway

Treatment - Mucinous Ovarian Cancer (23)

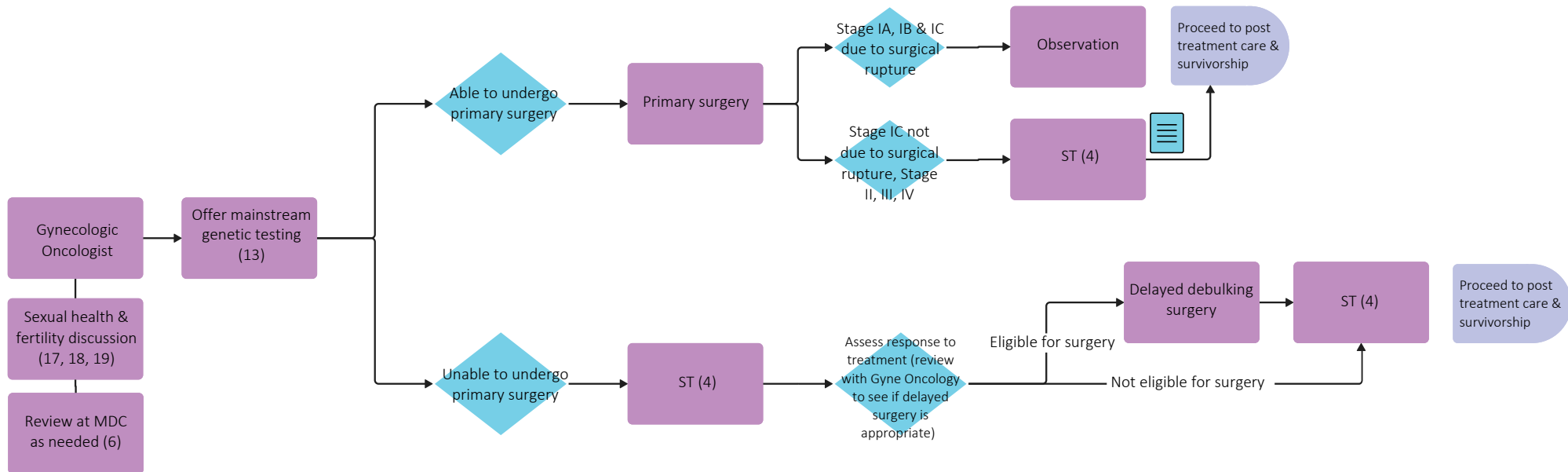


Throughout treatment, consider...

Regular symptom & performance status assessment (14); Supportive care (15, 16); Sexual & reproductive health (17, 18, 19); Co-morbidity management & medication review; Risk factor mitigation; Clinical trials (where applicable) (20, 21); Goals of care (22); Cultural safety (2); Involvement of PCP; Consider referral to Hereditary Cancer Program based on pt's family history (8)

Gynecological Tumour Group - Epithelial Ovarian Pathway

Treatment - Low Grade Serous Ovarian Cancer (23)



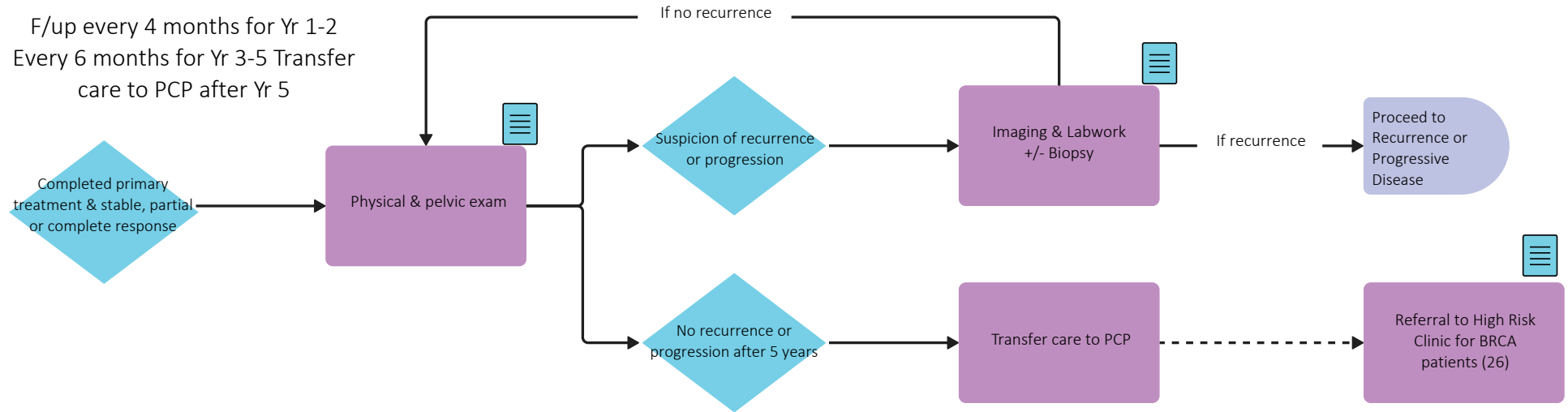
Throughout treatment, consider...

Regular symptom & performance status assessment (14); Supportive care (15, 16); Sexual & reproductive health (17, 18, 19); Co-morbidity management & medication review; Risk factor mitigation; Clinical trials (where applicable) (20, 21); Goals of care (22); Cultural safety (2); Involvement of PCP; Consider referral to Hereditary Cancer Program based on pt's family history (8)

Gynecological Tumour Group - Epithelial Ovarian Pathway

Treatment - Post-Treatment Care & Survivorship

F/up conducted by oncology team for first 5 years
(remote pts may be followed by FP/Gynecologist)

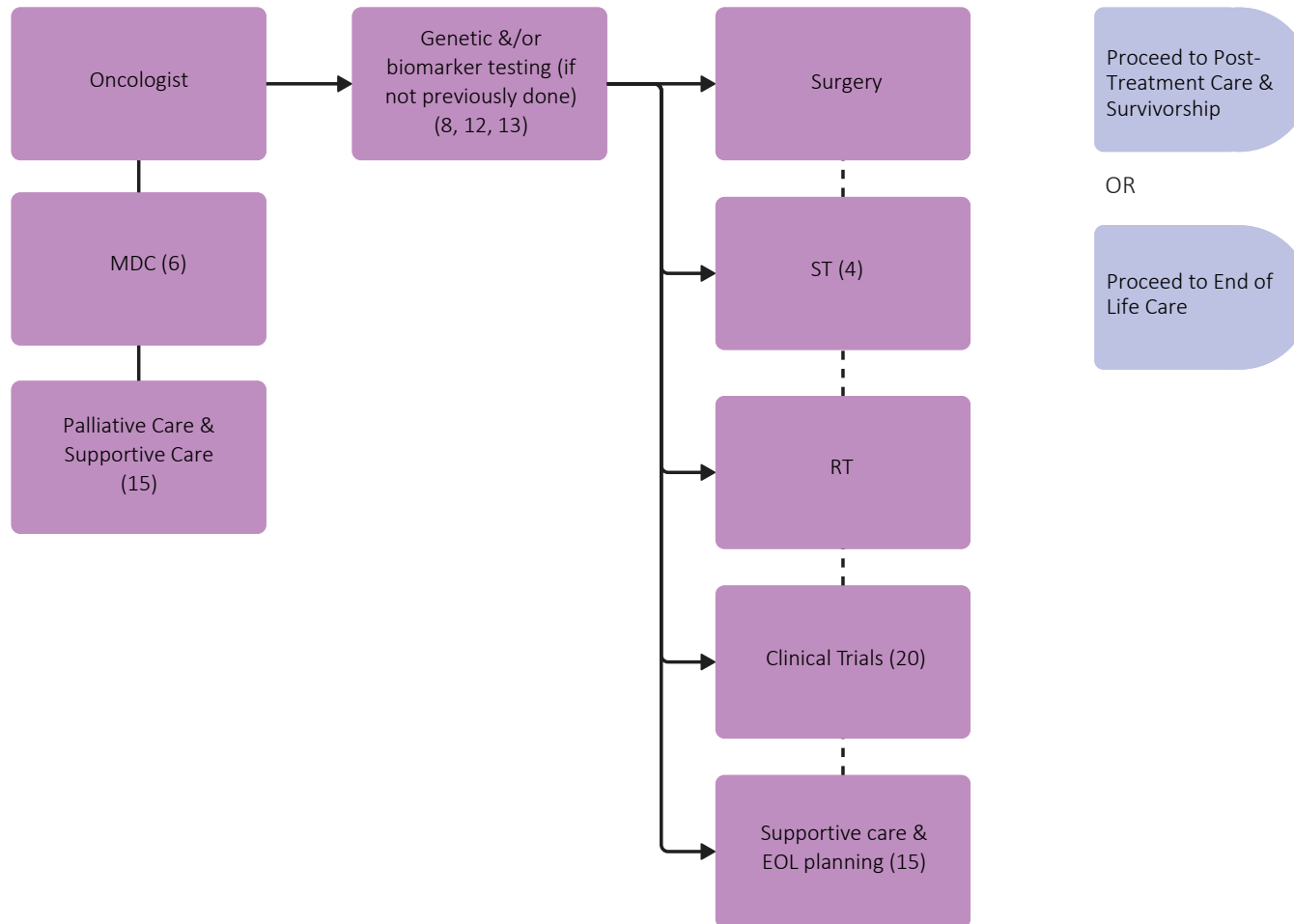


Throughout treatment, consider...

Regular symptom & performance status assessment (14); Supportive care (15, 16); Sexual & reproductive health (17, 18, 19); Co-morbidity management & medication review; Risk factor mitigation; Clinical trials (where applicable) (20, 21); Goals of care (22); Cultural safety (2); Involvement of PCP; Consider referral to Hereditary Cancer Program based on pt's family history (8)

Gynecological Tumour Group - Epithelial Ovarian Pathway

Recurrent or Progressive Disease

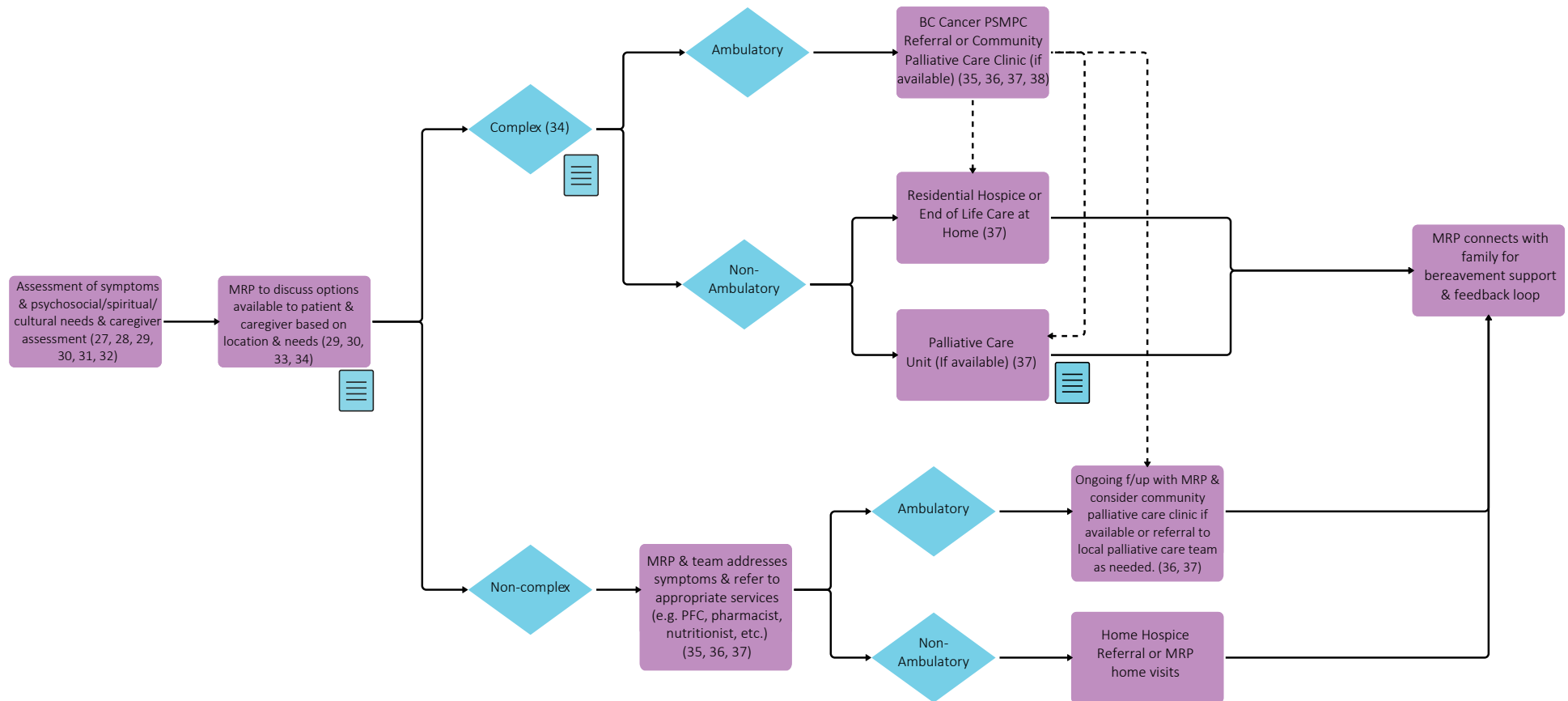


Throughout treatment, consider...

Regular symptom & performance status assessment (14); Supportive care (15, 16); Sexual & reproductive health (17, 18, 19); Co-morbidity management & medication review; Risk factor mitigation; Clinical trials (where applicable) (20, 21); Goals of care (22); Cultural safety (2); Involvement of PCP; Consider referral to Hereditary Cancer Program based on pt's family history (8)

Gynecological Tumour Group - Epithelial Ovarian Pathway

End of Life Care



Throughout treatment, consider...

Goals of Care Discussions & Consideration of Cultural Safety (2, 22, 33, 34, 39, 40, 41, 42)

Subject Matter Expert Working Group & COIs

Anna Tinker, Project Lead, Medical Oncologist
MERCK, GSK, Abbvie

Vanessa Carlson, Gynecologic Oncologist
COI pending

Theresa Chan, Medical Oncologist
Pfizer, Merck, Novartis, Astellas, Knight Therapeutics,
GSK, Amgen, Eisai, AstraZeneca

Richard Gagnon, Medical Oncologist
COI pending

Lien Hoang, Pathologist
COI pending

Jenny Ko, Medical Oncologist
Bayer, Astellas, Eisai, Merck, BMS, Pfizer, AZ,
Janssen, Bayer, Takeda

Andrea Neilson, Gynecologic Oncologist
Ovarian Cancer Canada, OVCare/GCI

Jennifer Nuk, Practice Leader - Genetic Counselling Hereditary
Cancer Program
COI pending

Ryan Urban, Radiation Oncologist
No disclosures

Stephen Yip, Pathologist
Amgen, AstraZeneca, Bayer, Pfizer, Roche, Servier

Pathway Program Team

Yashpal Bhatia, Project Coordinator, Tumour Groups
Tammy Currie, Executive Director, Provincial Programs
Amilya Ladak, Manager, Tumour Groups
James Loudon, Director, Provincial Programs
Kalina Nowaczek, Policy Analyst, Tumour Groups
Christine Simmons, Tumour Group Council Chair
Elaine Wai, Senior Executive Director, Medical Affairs and Quality

Other Stakeholders

Family Practice & GPO
Indigenous Cancer Control
Nursing Community of Practice (NCoP)
Patient and Family Experience Team & Supportive Care
Radiation Therapists
Surgical Oncology Network
Provincial Pharmacy, Pathology & Medical Imaging Teams

Appendix

- 1 <http://www.bccancer.bc.ca/health-professionals/professional-resources/clinical-care-pathways>
- 2 <http://www.phsa.ca/aboriginal-health-site/Documents/IPN%20Fillable%20Referral%20Form.pdf>
- 3 <https://cap.phsa.ca/>
- 4 <http://www.bccancer.bc.ca/health-professionals/clinical-resources/chemotherapy-protocols/gynecology>
- 5 <http://www.bccancer.bc.ca/systemic-therapy-site/Documents/Policy%20and%20Forms/Patient%20assistance%20programs.pdf>
- 6 <http://www.bccancer.bc.ca/books/Documents/Clinical%20Care%20Pathways/Patient%20Conference%20Order.pdf>
- 7 <http://www.bccancer.bc.ca/health-professionals/clinical-resources/pharmacy#Contact--info>
- 8 <http://www.bccancer.bc.ca/health-professionals/clinical-resources/hereditary-cancer>
- 9 <http://www.bccancer.bc.ca/health-professionals-site/Documents/Patient-Referral-Form.pdf>
- 10 <https://cancergeneticslab.ca/requisitions/>
- 11 https://cancergeneticslab.ca/wp-content/uploads//2024/05/CACG_CGL_3015-CGL-Solid-Tumour-Requisition-Molecular.pdf
- 12 <http://www.bccancer.bc.ca/lab-services-site/Documents/Biomarker%20Request%20Form%20Jan%2023,%202019.pdf>
- 13 https://cancergeneticslab.ca/wp-content/uploads//2024/12/CACG_CGL_3017-CGL-Hereditary-Cancer-Multi-Gene-Panel-Requisition.pdf
- 14 <https://www.uptodate.com/contents/image?imageKey=HEME%2F72901>
- 15 <http://www.bccancer.bc.ca/our-services/services/supportive-care>
- 16 <http://www.bccancer.bc.ca/our-services/services/support-programs>
- 17 <https://www.olivefertility.com/referring-physicians>
- 18 <https://www.pacificfertility.ca/physician-resources>
- 19 <http://www.bccancer.bc.ca/health-info/coping-with-cancer/managing-symptoms-side-effects/sexual-health>
- 20 <https://www.bccrc.ca/dept/cid/clinical-trials>
- 21 <https://www.cansarcc.ca/>
- 22 <http://www.bccancer.bc.ca/new-patients-site/Documents/ACP-goals-of-care-orders.pdf>
- 23 <http://www.bccancer.bc.ca/health-professionals/clinical-resources/cancer-management-manual/gynecology/ovary-epithelial-carcinoma>
- 24 <http://www.bccancer.bc.ca/health-professionals/clinical-resources/cancer-management-manual/gynecology/ovary-epithelial-carcinoma#Management>
- 25 <http://www.bccancer.bc.ca/health-professionals/clinical-resources/cancer-management-manual/gynecology/ovary-epithelial-carcinoma#Follow-up>
- 26 <http://www.bccancer.bc.ca/health-professionals/clinical-resources/hereditary-cancer/high-risk-clinic>
- 27 <http://www.bccancer.bc.ca/our-services/centres-clinics/bc-cancer-vancouver/epicc>
- 28 https://www2.gov.bc.ca/assets/gov/health/practitioner-pro/bc-guidelines/palliative1_appendix_a.pdf
- 29 <https://www.bc-cpc.ca/publications/symptom-management-guidelines/>
- 30 <https://www2.gov.bc.ca/gov/content/health/practitioner-professional-resources/bc-guidelines/palliative-care>
- 31 <https://www2.gov.bc.ca/gov/content/health/practitioner-professional-resources/pharmacare/prescribers/plan-p-bc-palliative-care-benefits-program>
- 32 <http://www.bccancer.bc.ca/our-services/services/indigenous-cancer-control>
- 33 <http://www.bccancer.bc.ca/new-patients-site/Documents/SeriousIllnessConversationGuideCard.pdf>

Appendix

- 34 <http://www.phsa.ca/health-info/medical-assistance-in-dying>
- 35 <http://www.bccancer.bc.ca/managing-symptoms-site/Documents/PSMPC-Referral-Form-for-All-BC-Cancer-Centres.pdf>
- 36 <http://www.bccancer.bc.ca/our-services/services/supportive-care/pain-symptom-management#What--we--do>
- 37 https://vancouver.pathwaysbc.ca/service_categories/24
- 38 http://www.bccancer.bc.ca/new-patients-site/Documents/MIPPC_Referral_Form.pdf
- 39 <https://www2.gov.bc.ca/assets/gov/people/seniors/health-safety/pdf/myvoice-advancecareplanningguide.pdf>
- 40 <https://www2.gov.bc.ca/gov/content/family-social-supports/seniors/health-safety/advance-care-planning>
- 41 <http://www.bccancer.bc.ca/managing-symptoms-site/Documents/When-Life-Nearing-its-End.pdf>
- 42 <http://www.bccancer.bc.ca/new-patients-site/Documents/ACP-tips-for-oncology-professionals.pdf>
- 43 <http://www.bccancer.bc.ca/health-professionals/clinical-resources/smoking-cessation-program>
- 44 <http://www.bccancer.bc.ca/prevent/alcohol/reduce-your-risk>
- 45 <http://www.phsa.ca/health-professionals/professional-resources/language-services/translation>
- 46 <http://www.bccancer.bc.ca/our-services/services/library>
- 47 <https://www.healthlinkbc.ca/find-care/health-connect-registry>