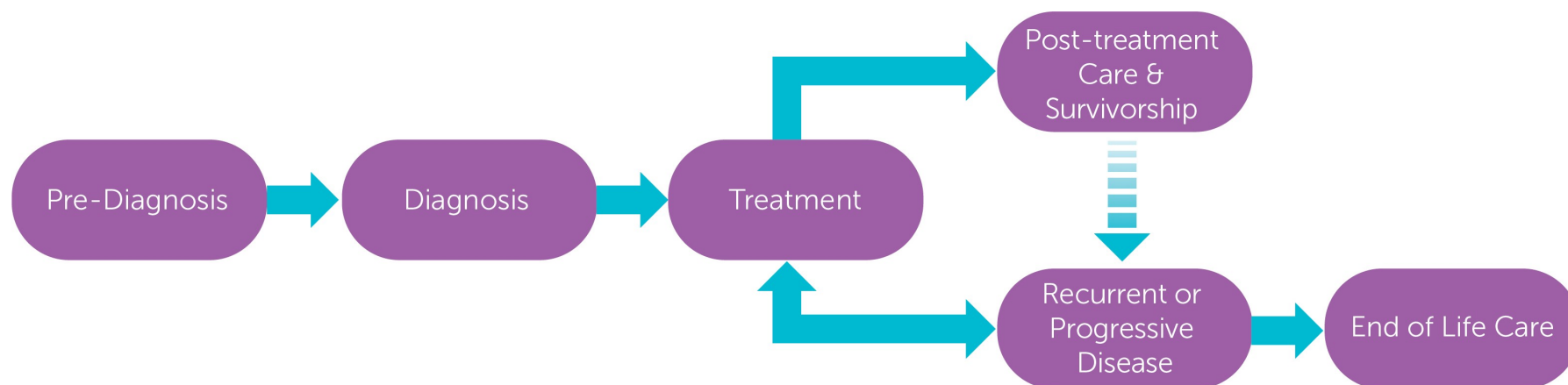


# Gynecological Tumour Group - Epithelial Ovarian Pathway

## Overarching Pathway



**Primary Care Practitioners**  
(Family Practice)

**Indigenous Cancer Care**

**Supportive Care**

(Counselling, Psychiatry, Nutrition, Speech Language Pathology, Physiotherapy, Pain & Symptom Management/Palliative Care)

This figure represents a general pathway of care that most people with cancer will experience. It shows

- The major phases of a cancer journey
- How a person might progress through each phase
- Key supportive services that are available throughout each person's cancer journey

Please visit the [Clinical Pathways Web](#) page for

- Tumour Group Clinical Pathways
- Patient Companion Guide
- Methodology Reports

## Target Population

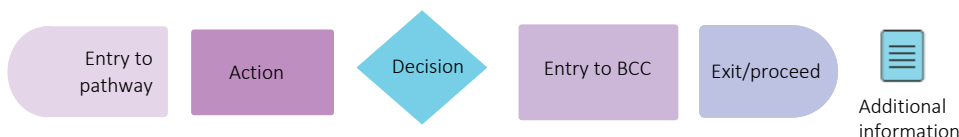
The target population for this pathway include health care providers such as primary care practitioners, oncologists, specialists, nurses, and other members of a health care team including allied health providers. Healthcare administrators across BC Cancer and the health authorities may also benefit from this resource for systems and operational planning.

## Pathway Disclaimer

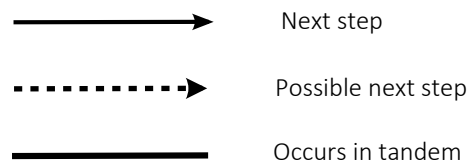
This pathway is an informational resource, intended to provide a high-level overview of the treatment journey a patient in British Columbia may receive. This pathway is not a substitute for medical advice and clinical judgment is still required as not all care trajectories will follow the proposed steps outlined in the pathway. This resource may not reflect all available evidence as research continues to evolve rapidly and BC Cancer is not responsible for any incomplete information. Furthermore, BC Cancer and those involved in developing this pathway are not liable for any incidental or consequential outcomes related to the information in this pathway. Anyone using the information provided in this pathway does so at their own risk.

## Pathway Map Legend

### Shape Guide



### Line Guide



## Pathway Map Considerations

This pathway is intended as a high-level resource and therefore does not include specific recommendations on specific systemic therapy protocols or radiation therapy doses. Instead, additional information can be sought via the inserted hyperlinks to resources that may aid a clinician in their treatment planning. The level of detail for each pathway was guided by the tumor group lead and intentionally kept high-level and represents the overall ideal pathway of care for a patient in general. Each patient will have individual needs and each cancer centre may have variation in the way care is delivered, but overall the intent was to represent the pathway that the majority of patients will follow.

## General Resources

**Indigenous Patient Navigator Referral Form**(2): <http://www.phsa.ca/aboriginal-health-site/Documents/IPN%20Fillable%20Referral%20Form.pdf>  
**Supportive Care**(15): <http://www.bccancer.bc.ca/our-services/services/supportive-care>  
**Compassionate Access Program**(CAP) (3): <https://cap.phsa.ca/>  
**Gynecology Chemotherapy Protocols**(4): <http://www.bccancer.bc.ca/health-professionals/clinical-resources/chemotherapy-protocols/gynecology>  
**Manufacturer Patient Assistance Programs**(5): <http://www.bccancer.bc.ca/systemic-therapy-site/Documents/Policy%20and%20Forms/Patient%20assistance%20programs.pdf>  
**BC Cancer Research Clinical Trials**(20): <https://www.bccrc.ca/dept/cid/clinical-trials>  
**Smoking Cessation Program**(42): <http://www.bccancer.bc.ca/health-professionals/clinical-resources/smoking-cessation-program>  
**Alcohol Reduction**(43): <http://www.bccancer.bc.ca/prevent/alcohol/reduce-your-risk>  
**MDC Referral Form**(6): <http://www.bccancer.bc.ca/books/Documents/Clinical%20Care%20Pathways/Patient%20Conference%20Order.pdf>  
**Pharmacy Contact Info**(7): <http://www.bccancer.bc.ca/health-professionals/clinical-resources/pharmacy#Contact--info>  
**Language & Translation Services**(44): <http://www.phsa.ca/health-professionals/professional-resources/language-services/translation>  
**BC Cancer Library**(45): <http://www.bccancer.bc.ca/our-services/services/library>  
**Health Connect Registry**(46): <https://www.healthlinkbc.ca/find-care/health-connect-registry>

## Abbreviations

**BCRA:** BReast CAncer Gene  
**EOL:** End of Life  
**FP:** Family Practice  
**HGS:** High-Grade Serous Carcinoma  
**IHC MMR:** Immunohistochemistry Mismatch Repair  
**MDC:** Multidisciplinary Conference/Discussion  
**MRP:** Most Responsible Provider  
**PCP:** Primary Care Provider  
**PFC:** Patient & Family Counseling  
**PSMPC:** Pain & Symptom Management & Palliative Care  
**RT:** Radiation Therapy  
**ST:** Systemic Therapy

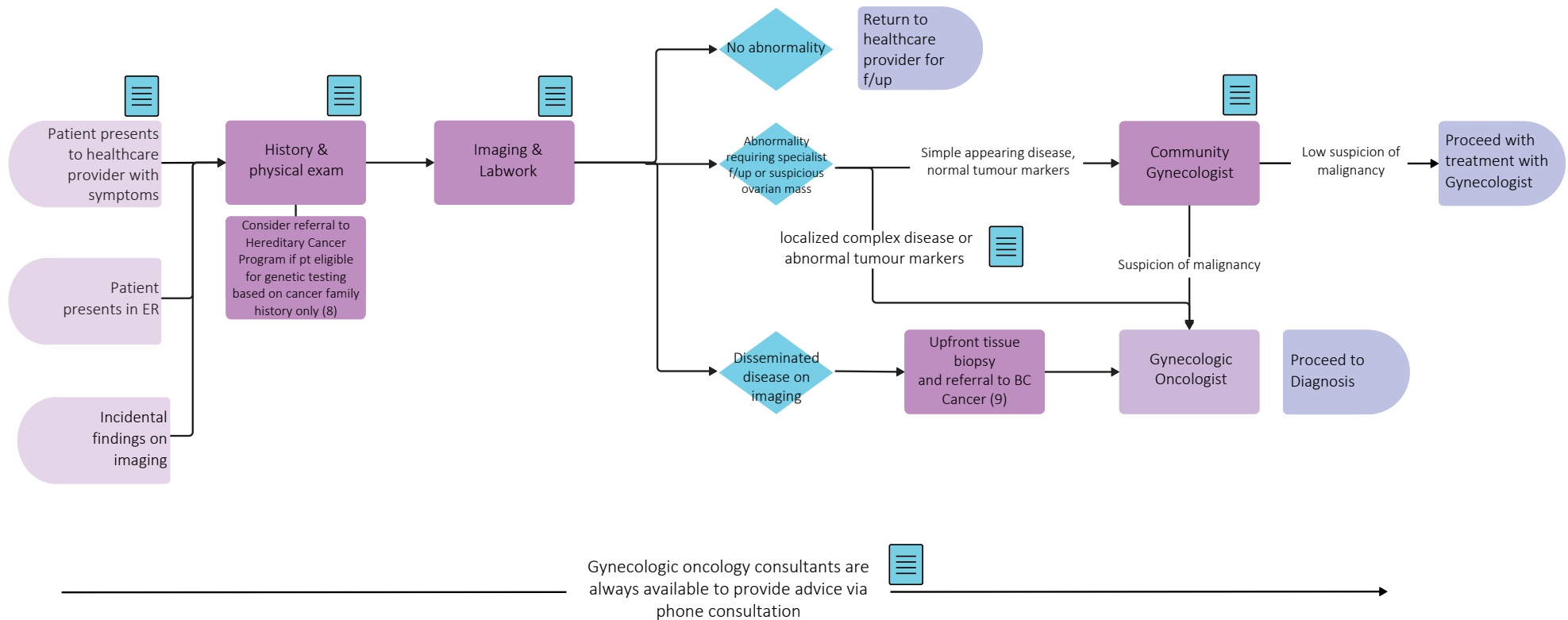
## Additional Information

To learn more about how the Clinical Care Pathways are developed, visit the [Methodology Report](#).

Other Tumour Group Clinical Care Pathways can be found on the [BC Cancer Website](#).

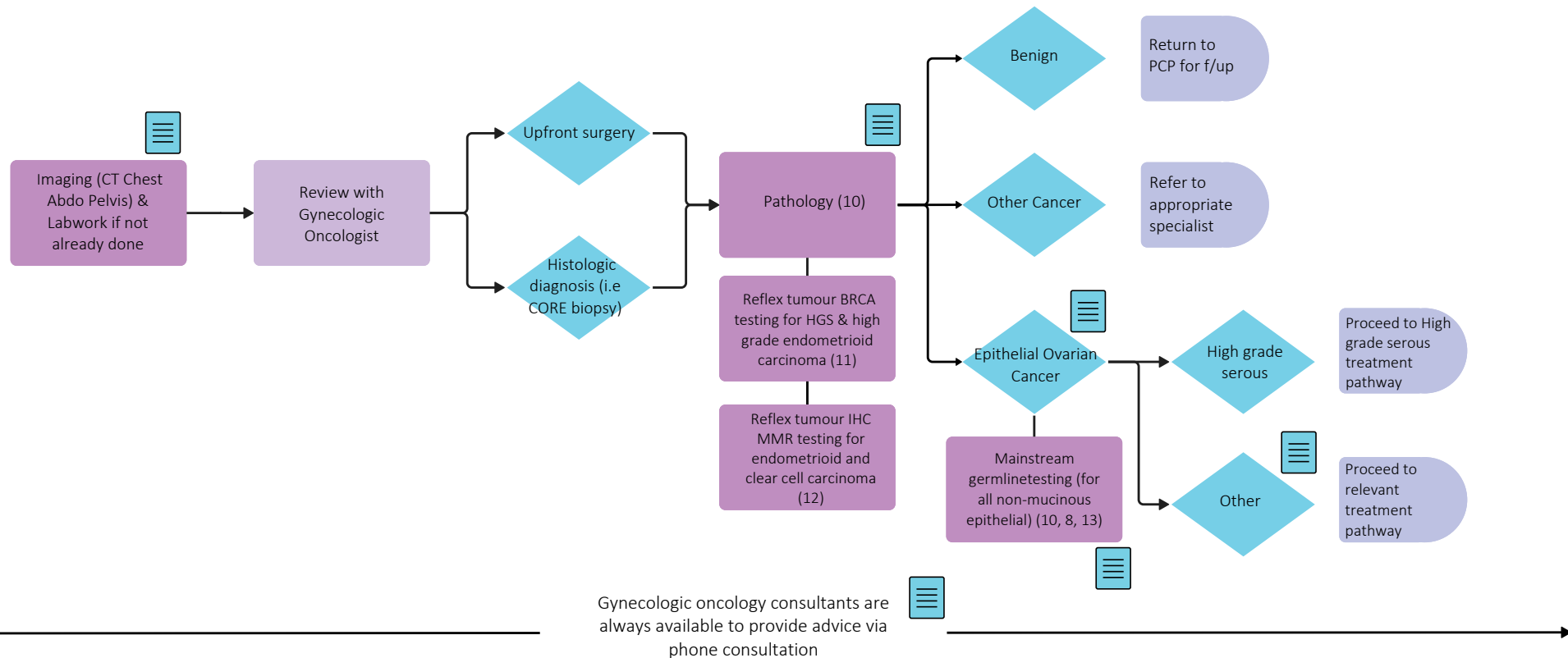
# Gynecological Tumour Group - Epithelial Ovarian Pathway

## Pre-Diagnosis



# Gynecological Tumour Group - Epithelial Ovarian Pathway

## Diagnosis (suspicion of malignancy)

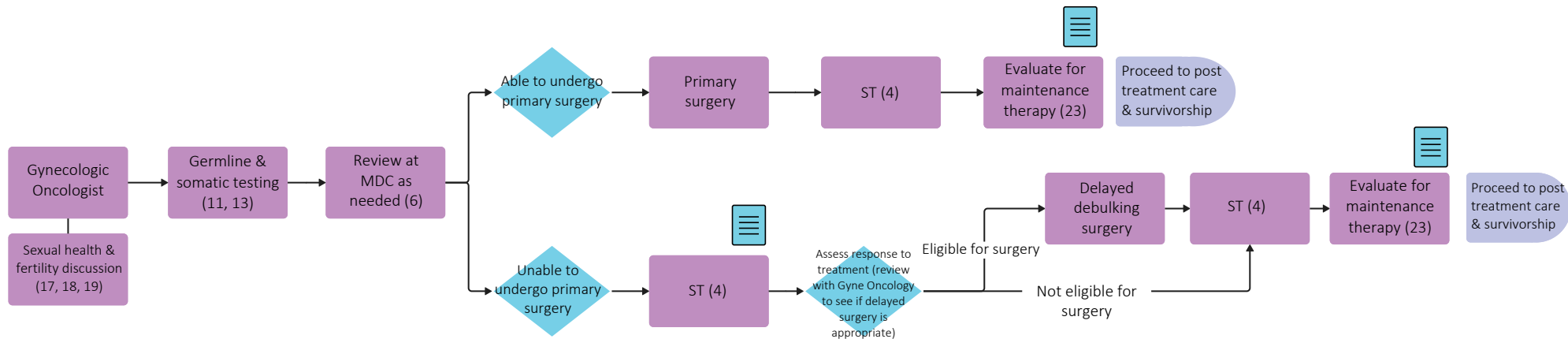


Throughout treatment, consider...

Regular symptom & performance status assessment (14); Supportive care (15, 16); Sexual & reproductive health (17, 18, 19); Co-morbidity management & medication review; Risk factor mitigation; Clinical trials (where applicable) (20); Goals of care (21); Cultural safety (2); Involvement of PCP; Consider referral to Hereditary Cancer Program based on pt's family history (8)

# Gynecological Tumour Group - Epithelial Ovarian Pathway

## Treatment - High Grade Serous Ovarian Cancer (22)

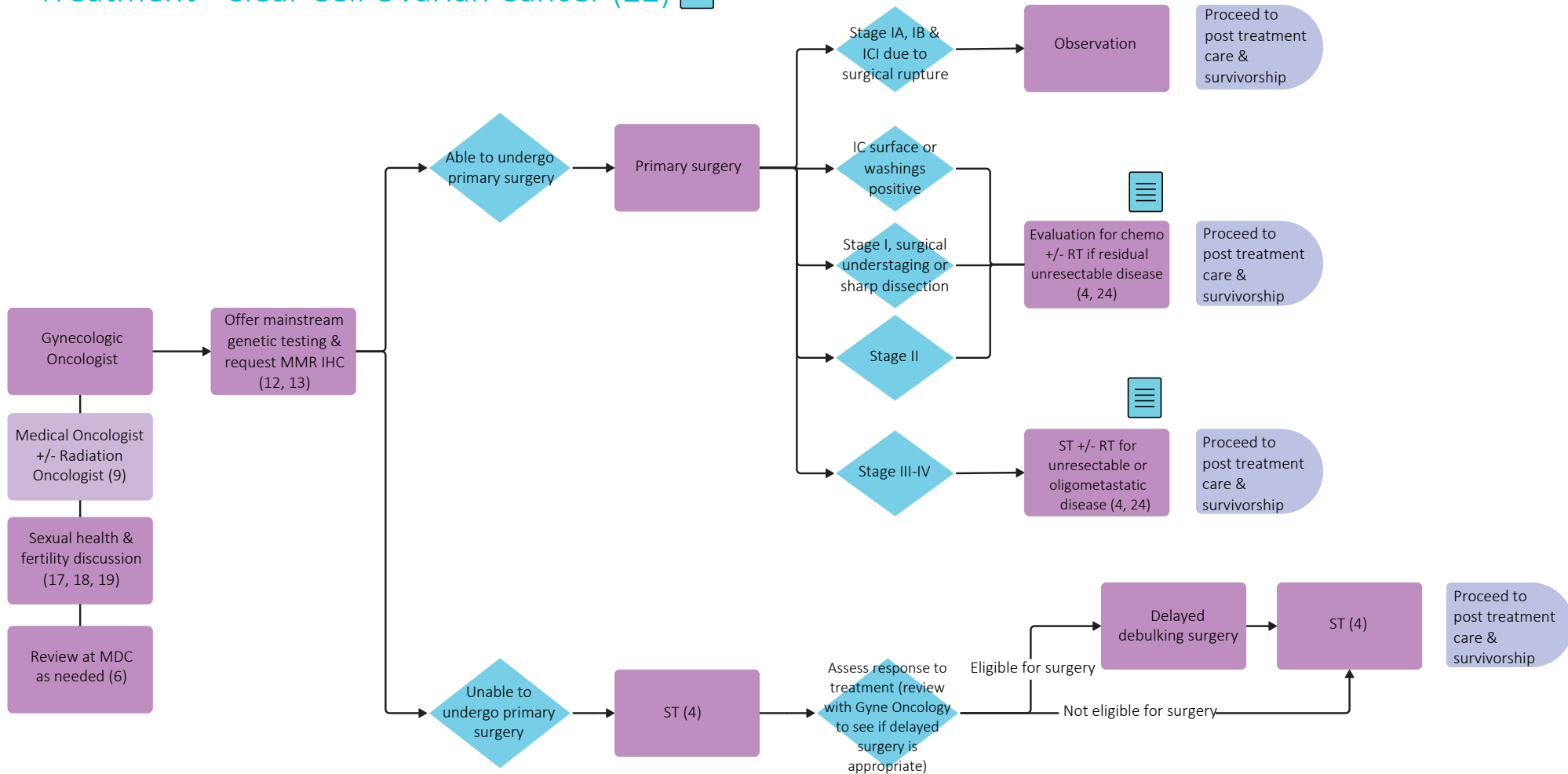


Throughout treatment, consider...

Regular symptom & performance status assessment (14); Supportive care (15, 16); Sexual & reproductive health (17, 18, 19); Co-morbidity management & medication review; Risk factor mitigation; Clinical trials (where applicable) (20); Goals of care (21); Cultural safety (2); Involvement of PCP; Consider referral to Hereditary Cancer Program based on pt's family history (8)

# Gynecological Tumour Group - Epithelial Ovarian Pathway

## Treatment - Clear Cell Ovarian Cancer (22)

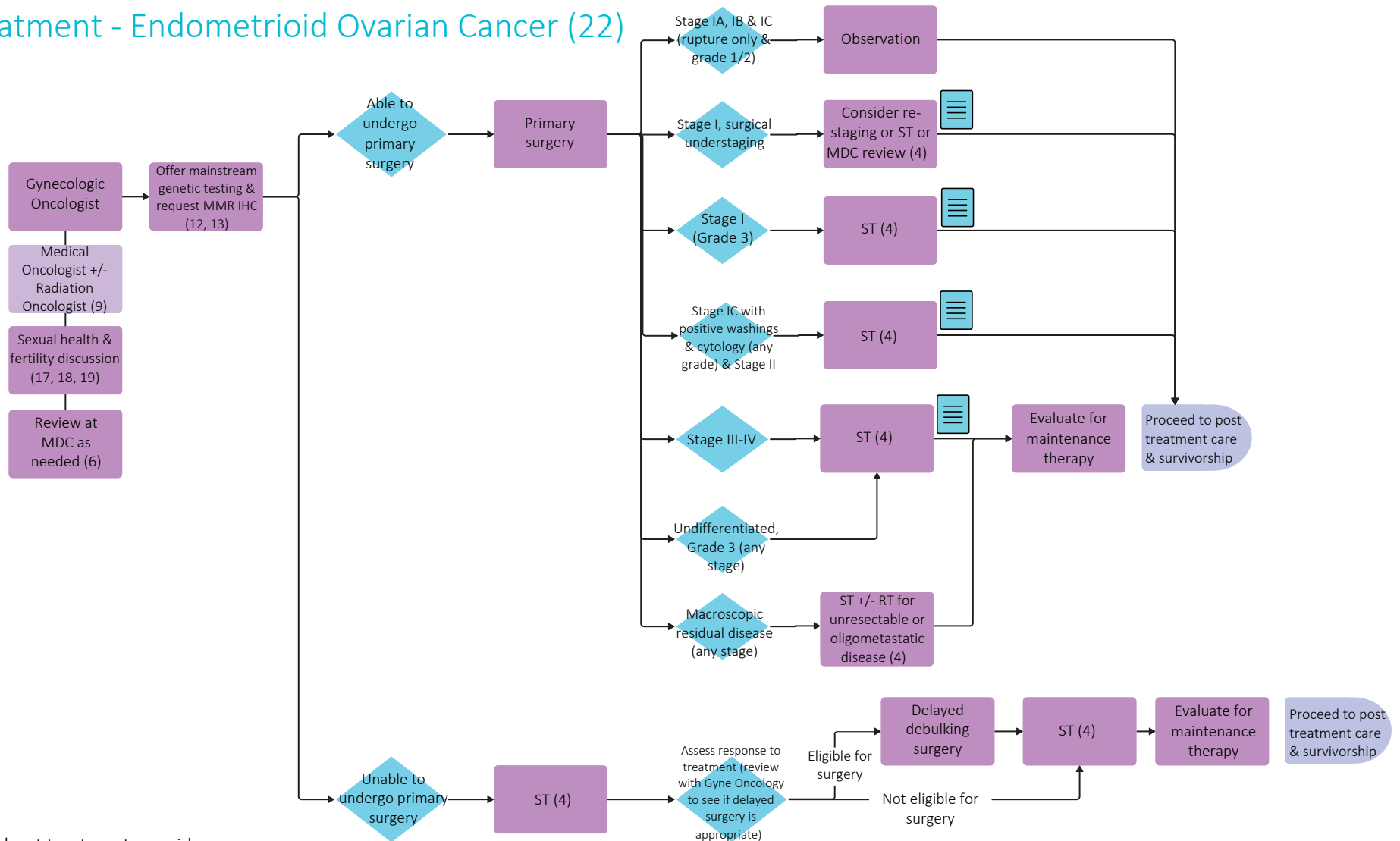


Throughout treatment, consider...

Regular symptom & performance status assessment (14); Supportive care (15, 16); Sexual & reproductive health (17, 18, 19); Co-morbidity management & medication review; Risk factor mitigation; Clinical trials (where applicable) (20); Goals of care (21); Cultural safety (2); Involvement of PCP; Consider referral to Hereditary Cancer Program based on pt's family history (8)

# Gynecological Tumour Group - Epithelial Ovarian Pathway

## Treatment - Endometrioid Ovarian Cancer (22)



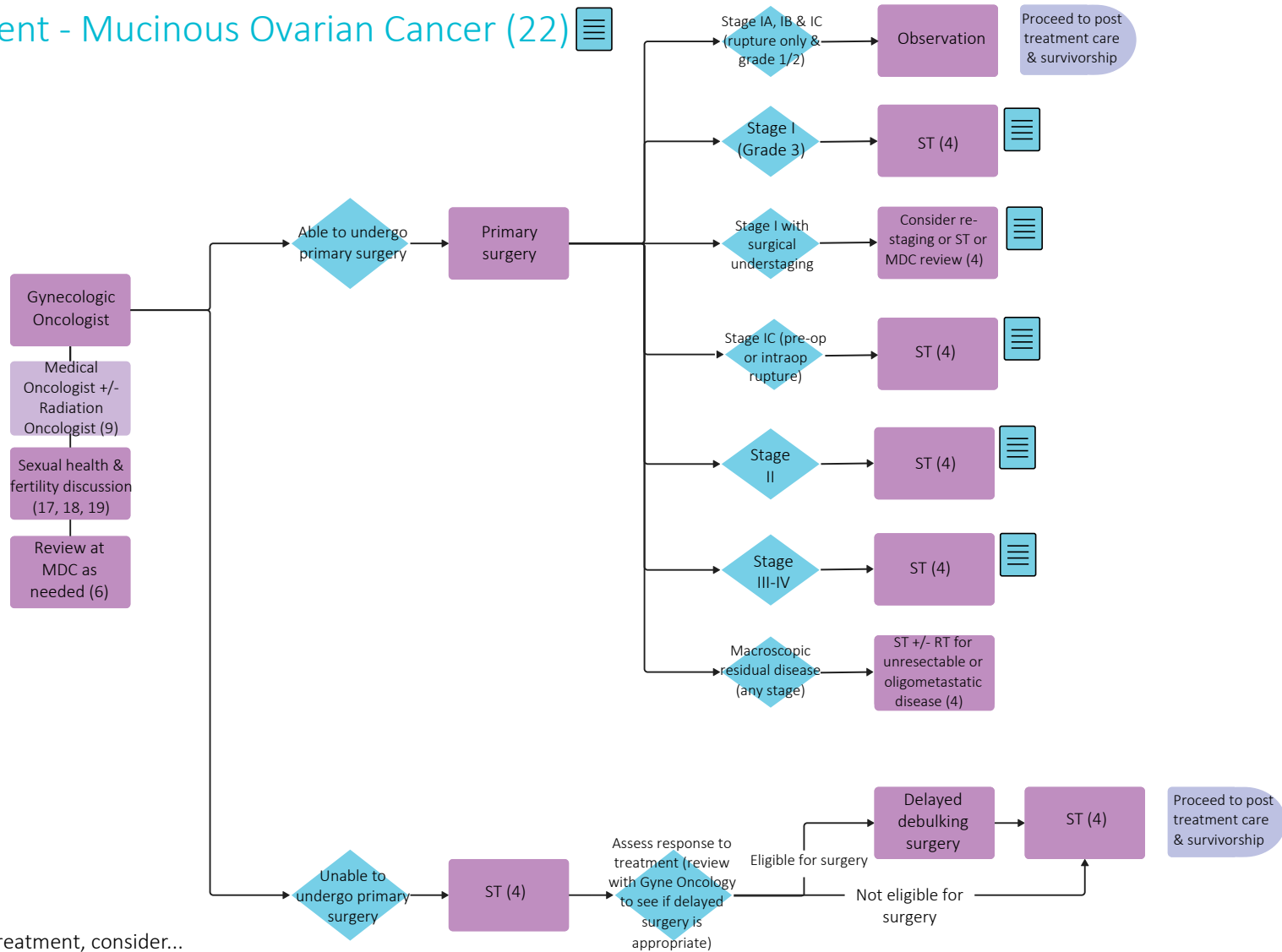
Throughout treatment, consider...

Regular symptom & performance status assessment (14); Supportive care (15, 16); Sexual & reproductive health (17, 18, 19); Co-morbidity management & medication review; Risk factor mitigation; Clinical trials (where applicable) (20); Goals of care (21); Cultural safety (2); Involvement of PCP; Consider referral to Hereditary Cancer Program based on pt's family history (8)



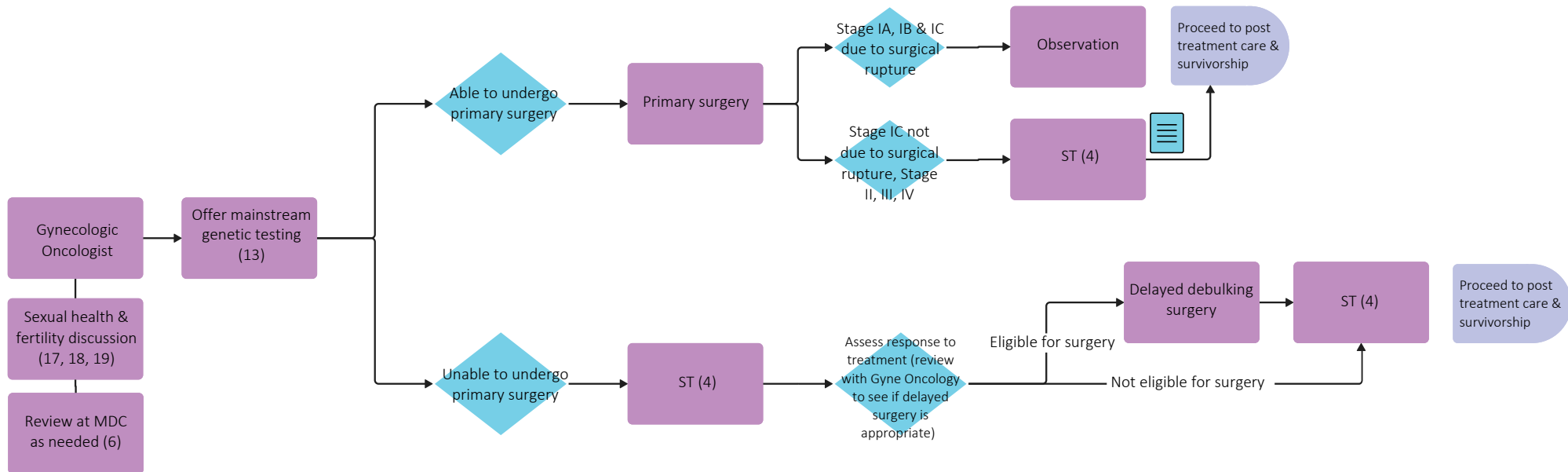
# Gynecological Tumour Group - Epithelial Ovarian Pathway

## Treatment - Mucinous Ovarian Cancer (22)



# Gynecological Tumour Group - Epithelial Ovarian Pathway

## Treatment - Low Grade Serous Ovarian Cancer (22)

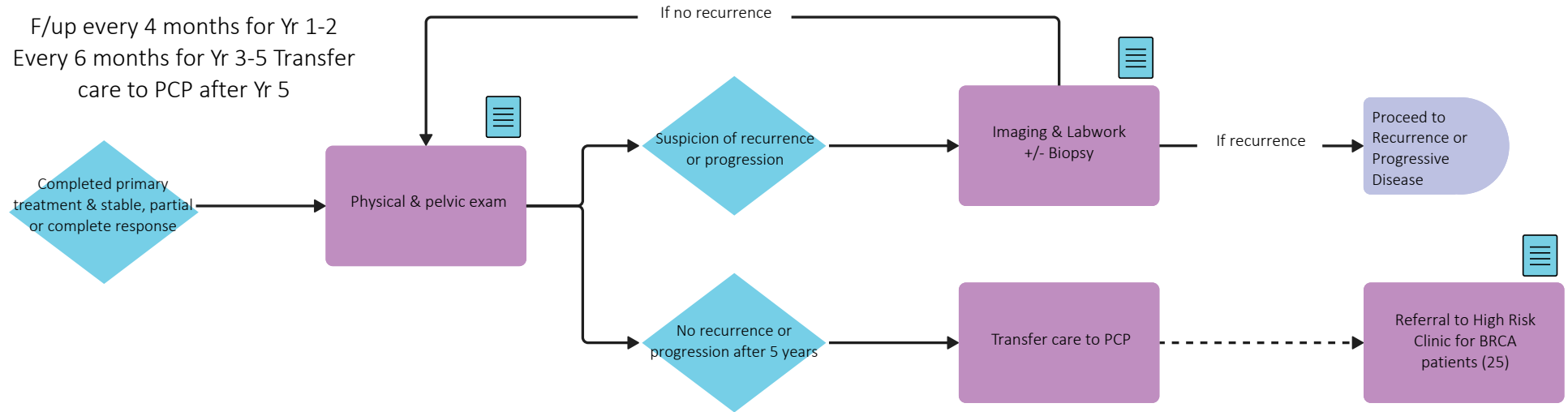


Throughout treatment, consider...

Regular symptom & performance status assessment (14); Supportive care (15, 16); Sexual & reproductive health (17, 18, 19); Co-morbidity management & medication review; Risk factor mitigation; Clinical trials (where applicable) (20); Goals of care (21); Cultural safety (2); Involvement of PCP; Consider referral to Hereditary Cancer Program based on pt's family history (8)

## Post-Treatment Care & Survivorship

F/up conducted by oncology team for first 5 years  
(remote pts may be followed by FP/Gynecologist)

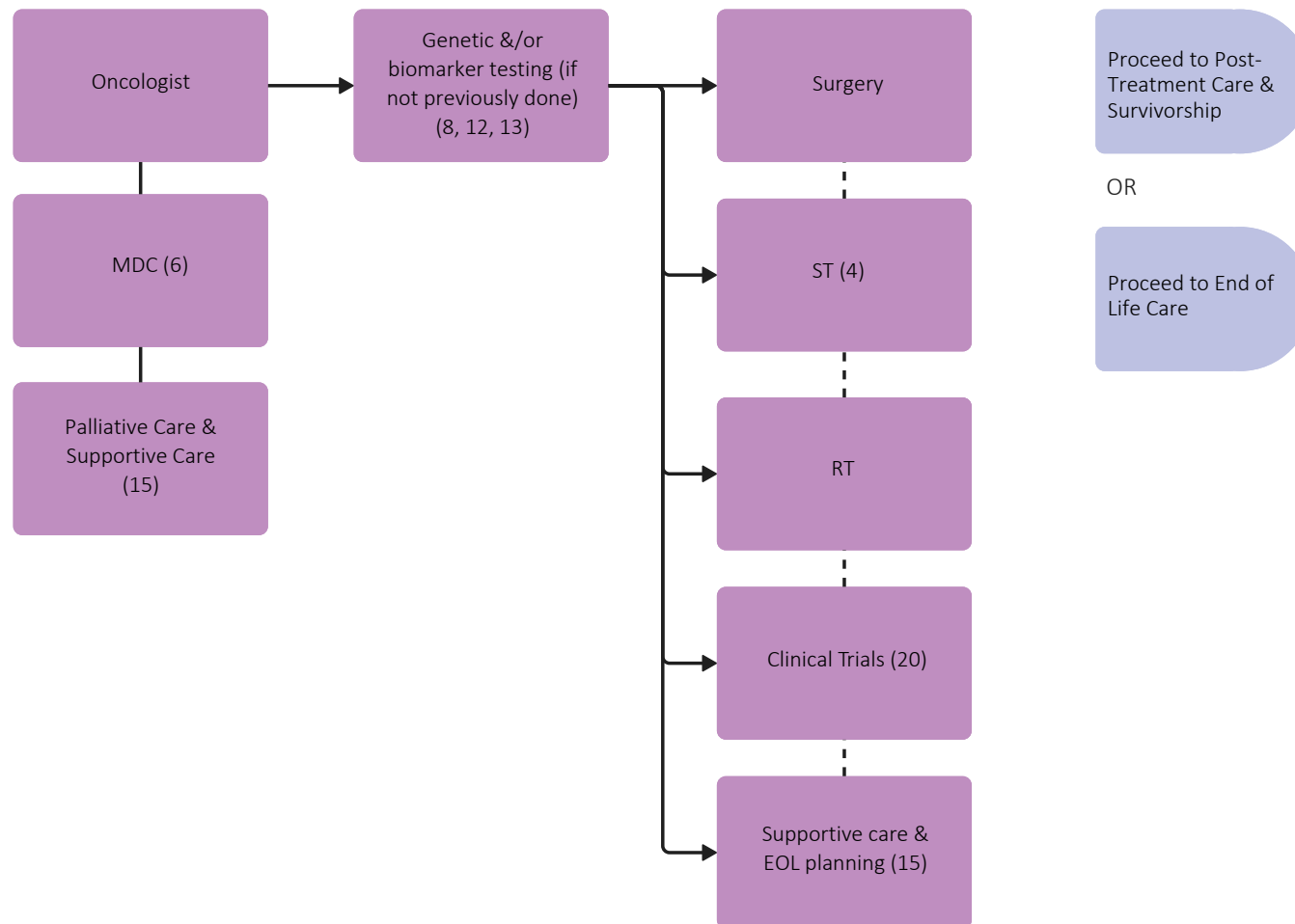


Throughout treatment, consider...

Regular symptom & performance status assessment (14); Supportive care (15, 16); Sexual & reproductive health (17, 18, 19); Co-morbidity management & medication review; Risk factor mitigation; Clinical trials (where applicable) (20); Goals of care (21); Cultural safety (2); Involvement of PCP; Consider referral to Hereditary Cancer Program based on pt's family history (8)

# Gynecological Tumour Group - Epithelial Ovarian Pathway

## Recurrent or Progressive Disease

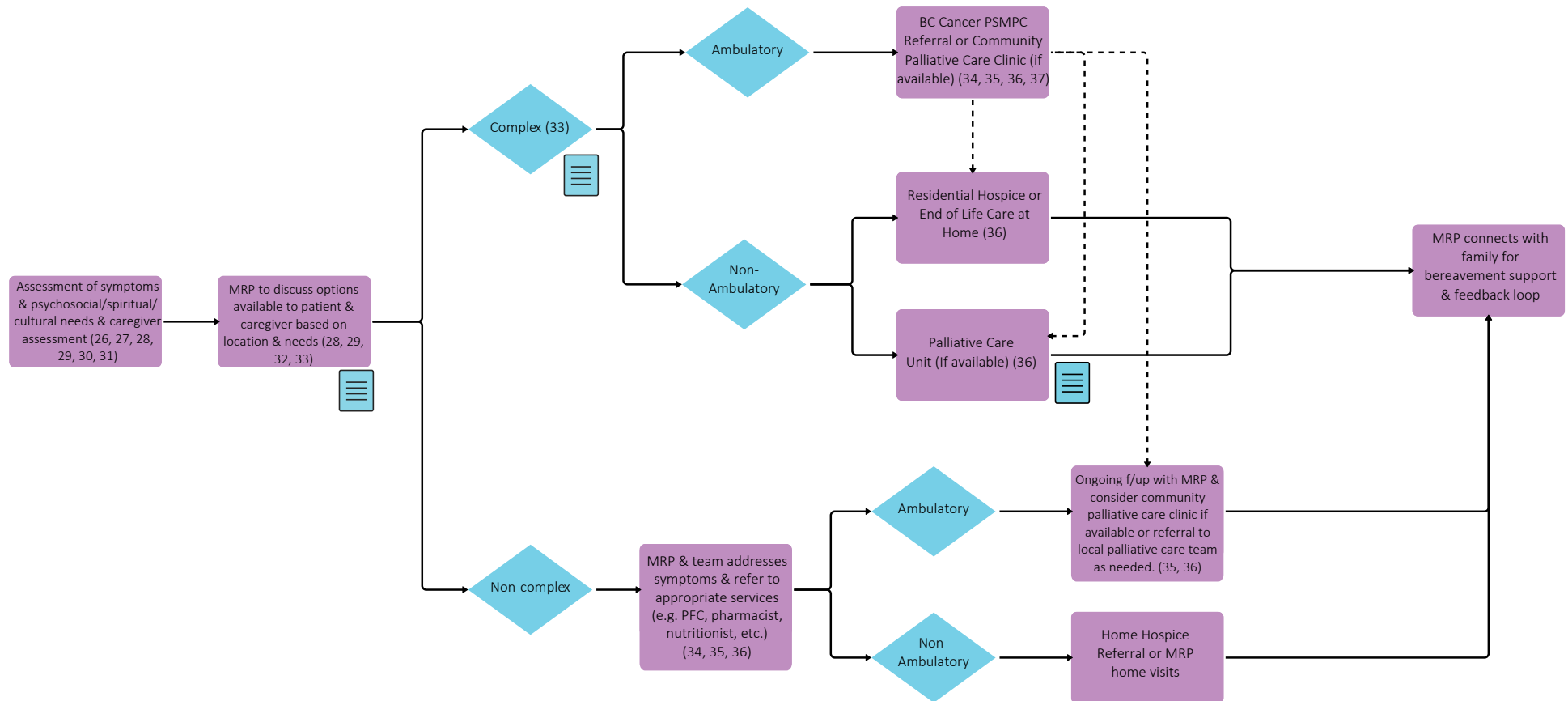


Throughout treatment, consider...

Regular symptom & performance status assessment (14); Supportive care (15, 16); Sexual & reproductive health (17, 18, 19); Co-morbidity management & medication review; Risk factor mitigation; Clinical trials (where applicable) (20); Goals of care (21); Cultural safety (2); Involvement of PCP; Consider referral to Hereditary Cancer Program based on pt's family history (8)

# Gynecological Tumour Group - Epithelial Ovarian Pathway

## End of Life Care



Throughout treatment, consider...

Goals of Care Discussions & Consideration of Cultural Safety (2, 21, 32, 33, 38, 39, 40, 41)

## Subject Matter Expert Working Group & COIs

**Anna Tinker**, Project Lead, Medical Oncologist  
MERCK, GSK, Abbvie

**Vanessa Carlson**, Gynecologic Oncologist  
COI pending

**Theresa Chan**, Medical Oncologist  
Pfizer, Merck, Novartis, Astellas, Knight Therapeutics,  
GSK, Amgen, Eisai, AstraZeneca

**Richard Gagnon**, Medical Oncologist  
COI pending

**Lien Hoang**, Pathologist  
COI pending

**Jenny Ko**, Medical Oncologist  
Bayer, Astellas, Eisai, Merck, BMS, Pfizer, AZ,  
Janssen, Bayer, Takeda

**Andrea Neilson**, Gynecologic Oncologist  
Ovarian Cancer Canada, OVCare/GCI

**Jennifer Nuk**, Practice Leader - Genetic Counselling Hereditary  
Cancer Program  
COI pending

**Ryan Urban**, Radiation Oncologist  
No disclosures

**Stephen Yip**, Pathologist  
Amgen, AstraZeneca, Bayer, Pfizer, Roche, Servier

---

## Pathway Program Team

**Yashpal Bhatia**, Project Coordinator, Tumour Groups  
**Tammy Currie**, Executive Director, Provincial Programs  
**Amilya Ladak**, Manager, Tumour Groups  
**James Loudon**, Director, Provincial Programs  
**Kalina Nowaczek**, Policy Analyst, Tumour Groups  
**Christine Simmons**, Tumour Group Council Chair  
**Elaine Wai**, Senior Executive Director, Medical Affairs and Quality

## Other Stakeholders

Family Practice & GPO  
Indigenous Cancer Control  
Nursing Community of Practice (NCoP)  
Patient and Family Experience Team & Supportive Care  
Radiation Therapists  
Surgical Oncology Network  
Provincial Pharmacy, Pathology & Medical Imaging Teams

*Suggested Citation: BC Cancer. (2025, June). Epithelial Ovarian Cancer Clinical Care Pathway. [http://www.bccancer.bc.ca/Documents/Epithelial%20Ovarian%20Clinical%20Pathway\\_Published.pdf](http://www.bccancer.bc.ca/Documents/Epithelial%20Ovarian%20Clinical%20Pathway_Published.pdf)*

## Appendix

- 1 <http://www.bccancer.bc.ca/health-professionals/professional-resources/clinical-care-pathways>
- 2 <http://www.phsa.ca/aboriginal-health-site/Documents/IPN%20Fillable%20Referral%20Form.pdf>
- 3 <https://cap.phsa.ca/>
- 4 <http://www.bccancer.bc.ca/health-professionals/clinical-resources/chemotherapy-protocols/gynecology>
- 5 <http://www.bccancer.bc.ca/systemic-therapy-site/Documents/Policy%20and%20Forms/Patient%20assistance%20programs.pdf>
- 6 <http://www.bccancer.bc.ca/books/Documents/Clinical%20Care%20Pathways/Patient%20Conference%20Order.pdf>
- 7 <http://www.bccancer.bc.ca/health-professionals/clinical-resources/pharmacy#Contact--info>
- 8 <http://www.bccancer.bc.ca/health-professionals/clinical-resources/hereditary-cancer>
- 9 <http://www.bccancer.bc.ca/health-professionals-site/Documents/Patient-Referral-Form.pdf>
- 10 <https://cancergeneticslab.ca/requisitions/>
- 11 [https://cancergeneticslab.ca/wp-content/uploads//2024/05/CACG\\_CGL\\_3015-CGL-Solid-Tumour-Requisition-Molecular.pdf](https://cancergeneticslab.ca/wp-content/uploads//2024/05/CACG_CGL_3015-CGL-Solid-Tumour-Requisition-Molecular.pdf)
- 12 <http://www.bccancer.bc.ca/lab-services-site/Documents/Biomarker%20Request%20Form%20Jan%2023,%202019.pdf>
- 13 [https://cancergeneticslab.ca/wp-content/uploads//2024/12/CACG\\_CGL\\_3017-CGL-Hereditary-Cancer-Multi-Gene-Panel-Requisition.pdf](https://cancergeneticslab.ca/wp-content/uploads//2024/12/CACG_CGL_3017-CGL-Hereditary-Cancer-Multi-Gene-Panel-Requisition.pdf)
- 14 <https://www.uptodate.com/contents/image?imageKey=HEME%2F72901>
- 15 <http://www.bccancer.bc.ca/our-services/services/supportive-care>
- 16 <http://www.bccancer.bc.ca/our-services/services/support-programs>
- 17 <https://www.olivefertility.com/referring-physicians>
- 18 <https://www.pacificfertility.ca/physician-resources>
- 19 <http://www.bccancer.bc.ca/health-info/coping-with-cancer/managing-symptoms-side-effects/sexual-health>
- 20 <https://www.bccrc.ca/dept/cid/clinical-trials>
- 21 <http://www.bccancer.bc.ca/new-patients-site/Documents/ACP-goals-of-care-orders.pdf>
- 22 <http://www.bccancer.bc.ca/health-professionals/clinical-resources/cancer-management-manual/gynecology/ovary-epithelial-carcinoma>
- 23 <http://www.bccancer.bc.ca/health-professionals/clinical-resources/cancer-management-manual/gynecology/ovary-epithelial-carcinoma#Management>
- 24 <http://www.bccancer.bc.ca/health-professionals/clinical-resources/cancer-management-manual/gynecology/ovary-epithelial-carcinoma#Follow-up>
- 25 <http://www.bccancer.bc.ca/health-professionals/clinical-resources/hereditary-cancer/high-risk-clinic>
- 26 <http://www.bccancer.bc.ca/our-services/centres-clinics/bc-cancer-vancouver/epicc>
- 27 [https://www2.gov.bc.ca/assets/gov/health/practitioner-pro/bc-guidelines/palliative1\\_appendix\\_a.pdf](https://www2.gov.bc.ca/assets/gov/health/practitioner-pro/bc-guidelines/palliative1_appendix_a.pdf)
- 28 <https://www.bc-cpc.ca/publications/symptom-management-guidelines/>
- 29 <https://www2.gov.bc.ca/gov/content/health/practitioner-professional-resources/bc-guidelines/palliative-care>
- 30 <https://www2.gov.bc.ca/gov/content/health/practitioner-professional-resources/pharmacare/prescribers/plan-p-bc-palliative-care-benefits-program>
- 31 <http://www.bccancer.bc.ca/our-services/services/indigenous-cancer-control>
- 32 <http://www.bccancer.bc.ca/new-patients-site/Documents/SeriousIllnessConversationGuideCard.pdf>

## Appendix

- 33 <http://www.phsa.ca/health-info/medical-assistance-in-dying>
- 34 <http://www.bccancer.bc.ca/managing-symptoms-site/Documents/PSMPC-Referral-Form-for-All-BC-Cancer-Centres.pdf>
- 35 <http://www.bccancer.bc.ca/our-services/services/supportive-care/pain-symptom-management#What--we--do>
- 36 [https://vancouver.pathwaysbc.ca/service\\_categories/24](https://vancouver.pathwaysbc.ca/service_categories/24)
- 37 [http://www.bccancer.bc.ca/new-patients-site/Documents/MIPPC\\_Referral\\_Form.pdf](http://www.bccancer.bc.ca/new-patients-site/Documents/MIPPC_Referral_Form.pdf)
- 38 <https://www2.gov.bc.ca/assets/gov/people/seniors/health-safety/pdf/myvoice-advancecareplanningguide.pdf>
- 39 <https://www2.gov.bc.ca/gov/content/family-social-supports/seniors/health-safety/advance-care-planning>
- 40 <http://www.bccancer.bc.ca/managing-symptoms-site/Documents/When-Life-Nearing-its-End.pdf>
- 41 <http://www.bccancer.bc.ca/new-patients-site/Documents/ACP-tips-for-oncology-professionals.pdf>
- 42 <http://www.bccancer.bc.ca/health-professionals/clinical-resources/smoking-cessation-program>
- 43 <http://www.bccancer.bc.ca/prevent/alcohol/reduce-your-risk>
- 44 <http://www.phsa.ca/health-professionals/professional-resources/language-services/translation>
- 45 <http://www.bccancer.bc.ca/our-services/services/library>
- 46 <https://www.healthlinkbc.ca/find-care/health-connect-registry>