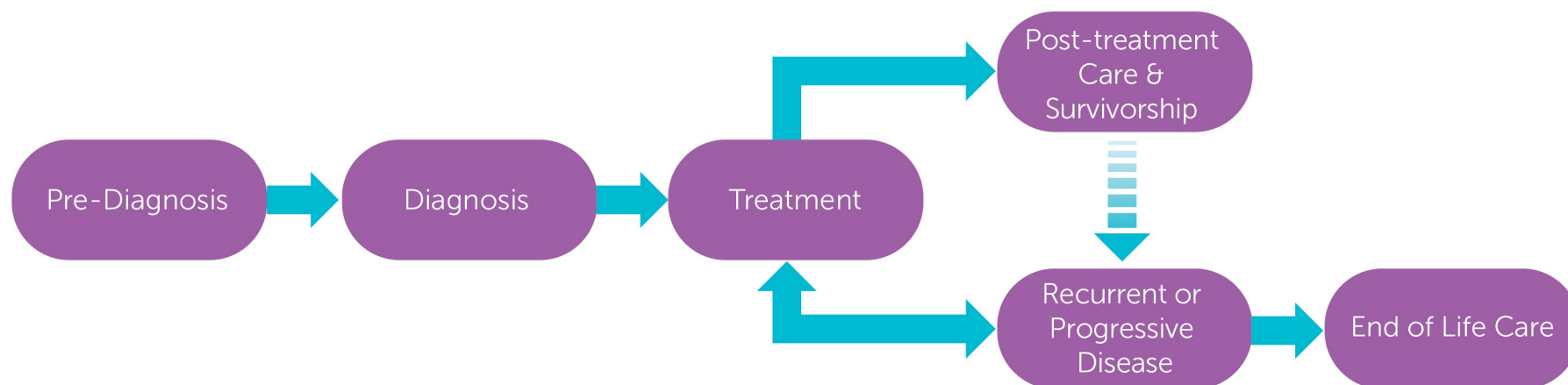


Lymphoma Tumour Group - Hodgkin Lymphoma Pathway

Overarching Pathway

Consultation Phase



Primary Care Practitioners
(Family Practice)

Indigenous Cancer Care

Supportive Care

(Counselling, Psychiatry, Nutrition, Speech Language Pathology, Physiotherapy, Pain & Symptom Management/Palliative Care)

This figure represents a general pathway of care that most people with cancer will experience. It shows

- The major phases of a cancer journey
- How a person might progress through each phase
- Key supportive services that are available throughout each person's cancer journey

Please visit the [Clinical Pathways Web](#) page for

- Tumour Group Clinical Pathways
- Patient Companion Guide
- Methodology Reports

Lymphoma Tumour Group - Hodgkin Lymphoma Pathway

Created June 2025

Target Population

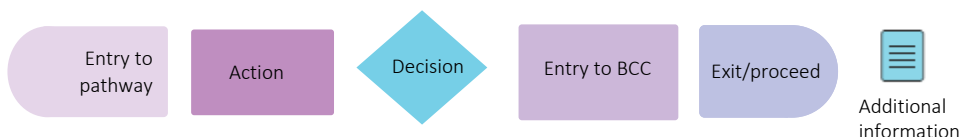
The target population for this pathway include health care providers such as primary care practitioners, oncologists, specialists, nurses, and other members of a health care team including allied health providers. Healthcare administrators across BC Cancer and the health authorities may also benefit from this resource for systems and operational planning.

Pathway Disclaimer

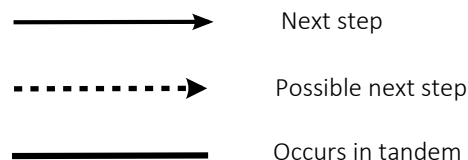
This pathway is an informational resource, intended to provide a high-level overview of the treatment journey a patient in British Columbia may receive. This pathway is not a substitute for medical advice and clinical judgment is still required as not all care trajectories will follow the proposed steps outlined in the pathway. This resource may not reflect all available evidence as research continues to evolve rapidly and BC Cancer is not responsible for any incomplete information. Furthermore, BC Cancer and those involved in developing this pathway are not liable for any incidental or consequential outcomes related to the information in this pathway. Anyone using the information provided in this pathway does so at their own risk.

Pathway Map Legend

Shape Guide



Line Guide



Pathway Map Considerations

This pathway is intended as a high-level resource and therefore does not include specific recommendations on specific systemic therapy protocols or radiation therapy doses. Instead, additional information can be sought via the inserted hyperlinks to resources that may aid a clinician in their treatment planning. The level of detail for each pathway was guided by the tumor group lead and intentionally kept high-level and represents the overall ideal pathway of care for a patient in general. Each patient will have individual needs and each cancer centre may have variation in the way care is delivered, but overall the intent was to represent the pathway that the majority of patients will follow.

General Resources

Indigenous Patient Navigator Referral Form(2): <http://www.phsa.ca/aboriginal-health-site/Documents/IPN%20Fillable%20Referral%20Form.pdf>

Supportive Care(11): <http://www.bccancer.bc.ca/our-services/services/supportive-care>

Compassionate Access Program(CAP) (3): <https://cap.phsa.ca/>

Lymphoma Chemotherapy Protocols(4): <http://www.bccancer.bc.ca/health-professionals/clinical-resources/chemotherapy-protocols/lymphoma-myeloma#hodgkin>

Manufacturer Patient Assistance Programs(5): <http://www.bccancer.bc.ca/systemic-therapy-site/Documents/Policy%20and%20Forms/Patient%20assistance%20programs.pdf>

BC Cancer Research Clinical Trials(16): <https://www.bccrc.ca/dept/cid/clinical-trials>

Smoking Cessation Program (41): <http://www.bccancer.bc.ca/health-professionals/clinical-resources/smoking-cessation-program>

Alcohol Reduction (42): <http://www.bccancer.bc.ca/prevent/alcohol/reduce-your-risk>

MDC Referral Form (6): <http://www.bccancer.bc.ca/books/Documents/Clinical%20Care%20Pathways/Patient%20Conference%20Order.pdf>

Pharmacy Contact Info (7): <http://www.bccancer.bc.ca/health-professionals/clinical-resources/pharmacy#Contact--info>

Pediatric Oncology Hematology Network Referral Form (8): <https://www.bcchildrens.ca/health-professionals/make-referral/cancer-and-blood-disorders-referral>

Language & Translation Services(43): <http://www.phsa.ca/health-professionals/professional-resources/language-services/translation>

BC Cancer Library(44): <http://www.bccancer.bc.ca/our-services/services/library>

Health Connect Registry (45): <https://www.healthlinkbc.ca/find-care/health-connect-registry>

Abbreviations

BMT: Bone Marrow Transplant

EOL: End of Life

FP: Family Practice

LYC: Lymphoma Conference

MDC: Multidisciplinary Conference/Discussion

MRP: Most Responsible Provider

PCP: Primary Care Provider

PFC: Patient & Family Counseling

PSMPC: Pain & Symptom Management & Palliative Care

RT: Radiation Therapy

ST: Systemic Therapy

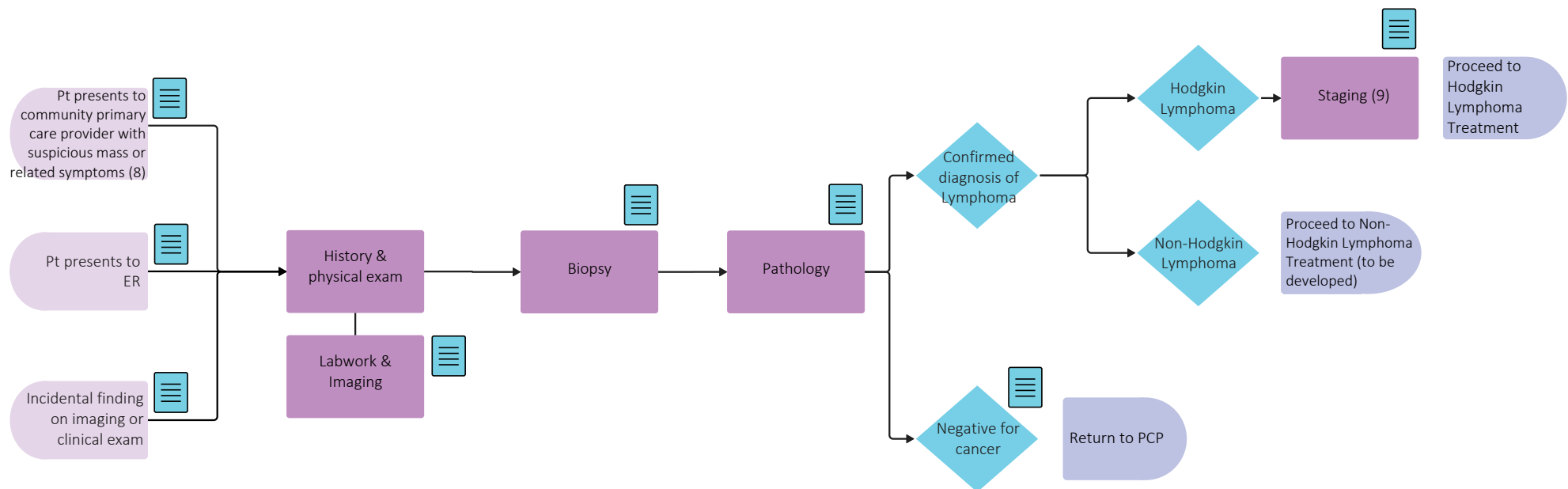
Additional Information

To learn more about how the Clinical Care Pathways are developed, visit the [Methodology Report](#).

Other Tumour Group Clinical Care Pathways can be found on the [BC Cancer Website](#).

Lymphoma Tumour Group - Hodgkin Lymphoma Pathway

Pre-Diagnosis & Diagnosis

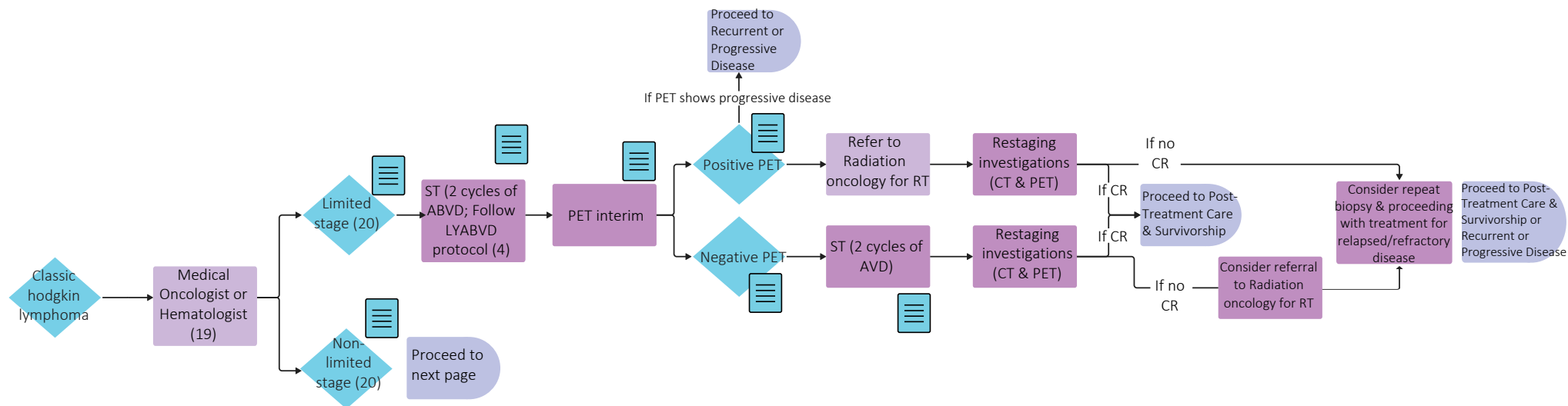


Throughout treatment, consider...

Regular symptom & performance status assessment (10); Supportive care (11, 12); Sexual & reproductive health (13, 14, 15); Co-morbidity management & medication review; Risk factor mitigation; Clinical trials (where applicable) (16, 17); Goals of care (18); Cultural safety (2); Involvement of PCP; Lymphoma Conference/MDC (as needed)

Lymphoma Tumour Group - Hodgkin Lymphoma Pathway

Treatment - Classic Hodgkin Lymphoma

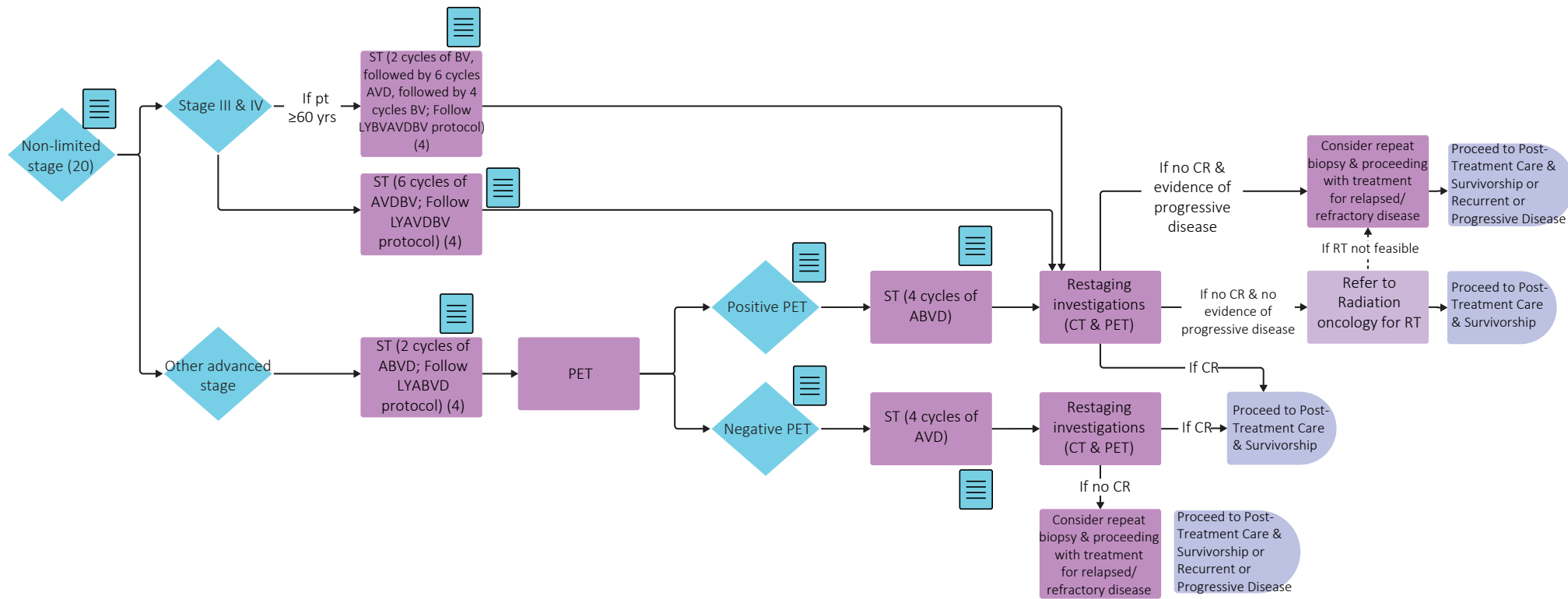


Throughout treatment, consider...

Regular symptom & performance status assessment (10); Supportive care (11, 12); Sexual & reproductive health (13, 14, 15); Co-morbidity management & medication review; Risk factor mitigation; Clinical trials (where applicable) (16, 17); Goals of care (18); Cultural safety (2); Involvement of PCP; Lymphoma Conference/MDC (as needed)

Lymphoma Tumour Group - Hodgkin Lymphoma Pathway

Treatment - Classic Hodgkin Lymphoma

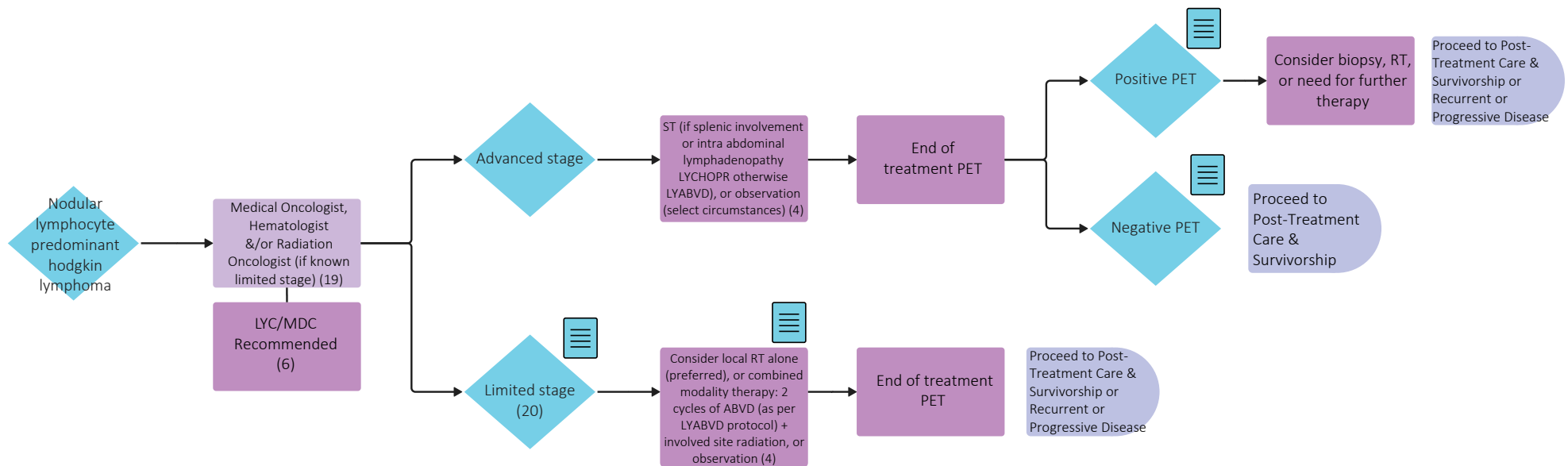


Throughout treatment, consider...

Regular symptom & performance status assessment (10); Supportive care (11, 12); Sexual & reproductive health (13, 14, 15); Co-morbidity management & medication review; Risk factor mitigation; Clinical trials (where applicable) (16, 17); Goals of care (18); Cultural safety (2); Involvement of PCP; Lymphoma Conference/MDC (as needed)

Lymphoma Tumour Group - Hodgkin Lymphoma Pathway

Treatment - Nodular Lymphocyte Predominant Hodgkin Lymphoma



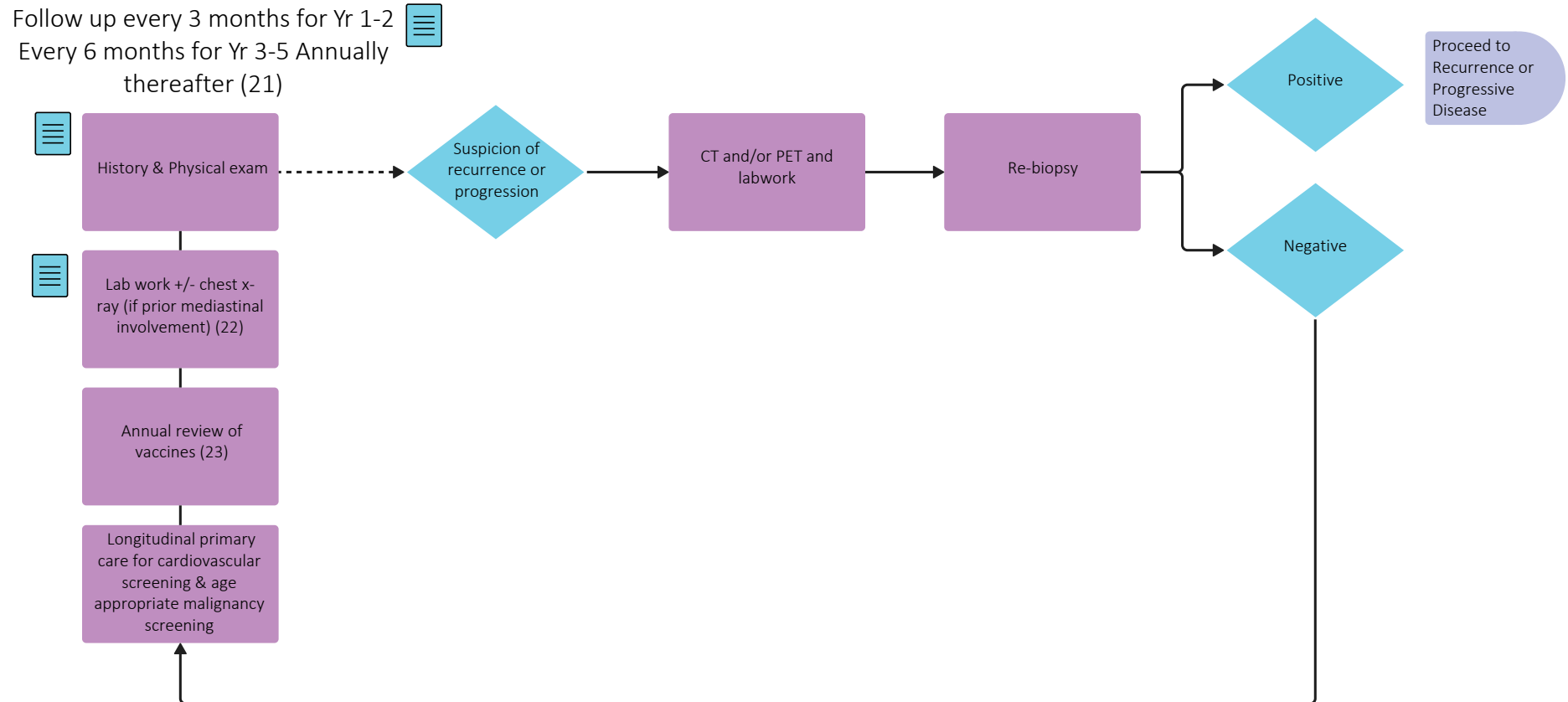
Throughout treatment, consider...

Regular symptom & performance status assessment (10); Supportive care (11, 12); Sexual & reproductive health (13, 14, 15); Co-morbidity management & medication review; Risk factor mitigation; Clinical trials (where applicable) (16, 17); Goals of care (18); Cultural safety (2); Involvement of PCP; Lymphoma Conference/MDC (as needed)

Lymphoma Tumour Group - Hodgkin Lymphoma Pathway

Treatment - Post-Treatment Care & Survivorship

Transition care to PCP (if appropriate) after 2 years of follow-up

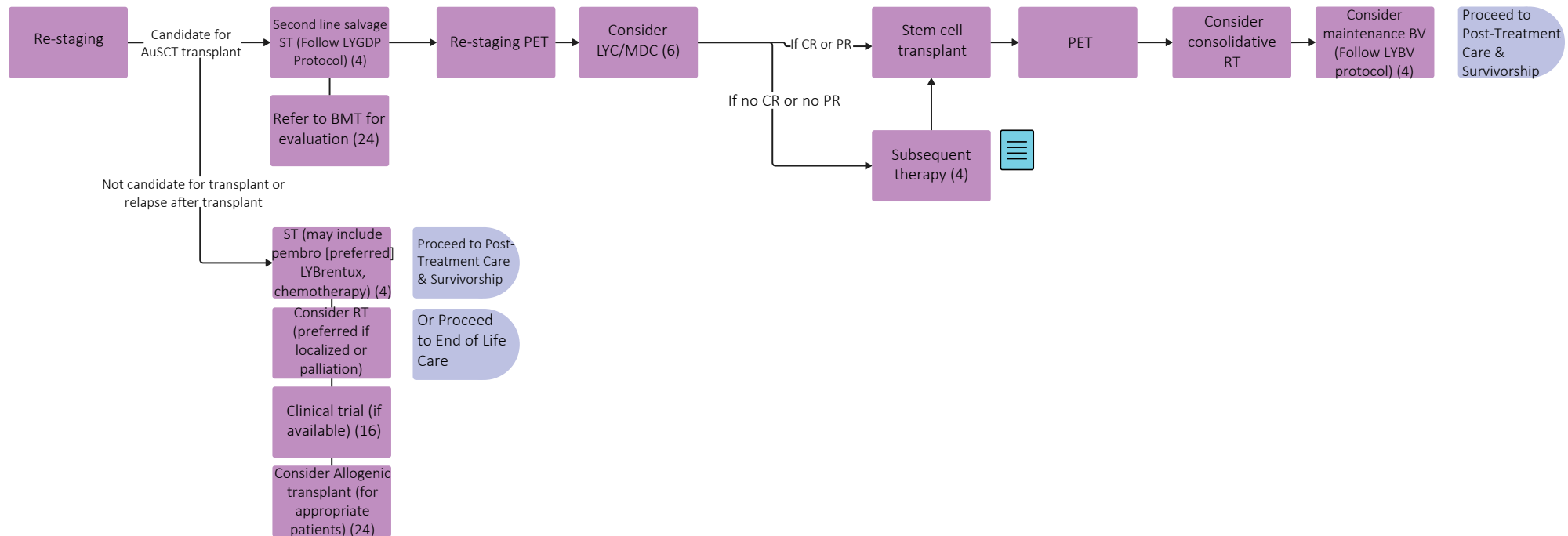


Throughout treatment, consider...

Regular symptom & performance status assessment (10); Supportive care (11, 12); Sexual & reproductive health (13, 14, 15); Co-morbidity management & medication review; Risk factor mitigation; Clinical trials (where applicable) (16, 17); Goals of care (18); Cultural safety (2); Involvement of PCP; Lymphoma Conference/MDC (as needed)

Lymphoma Tumour Group - Hodgkin Lymphoma Pathway

Recurrent or Progressive Disease

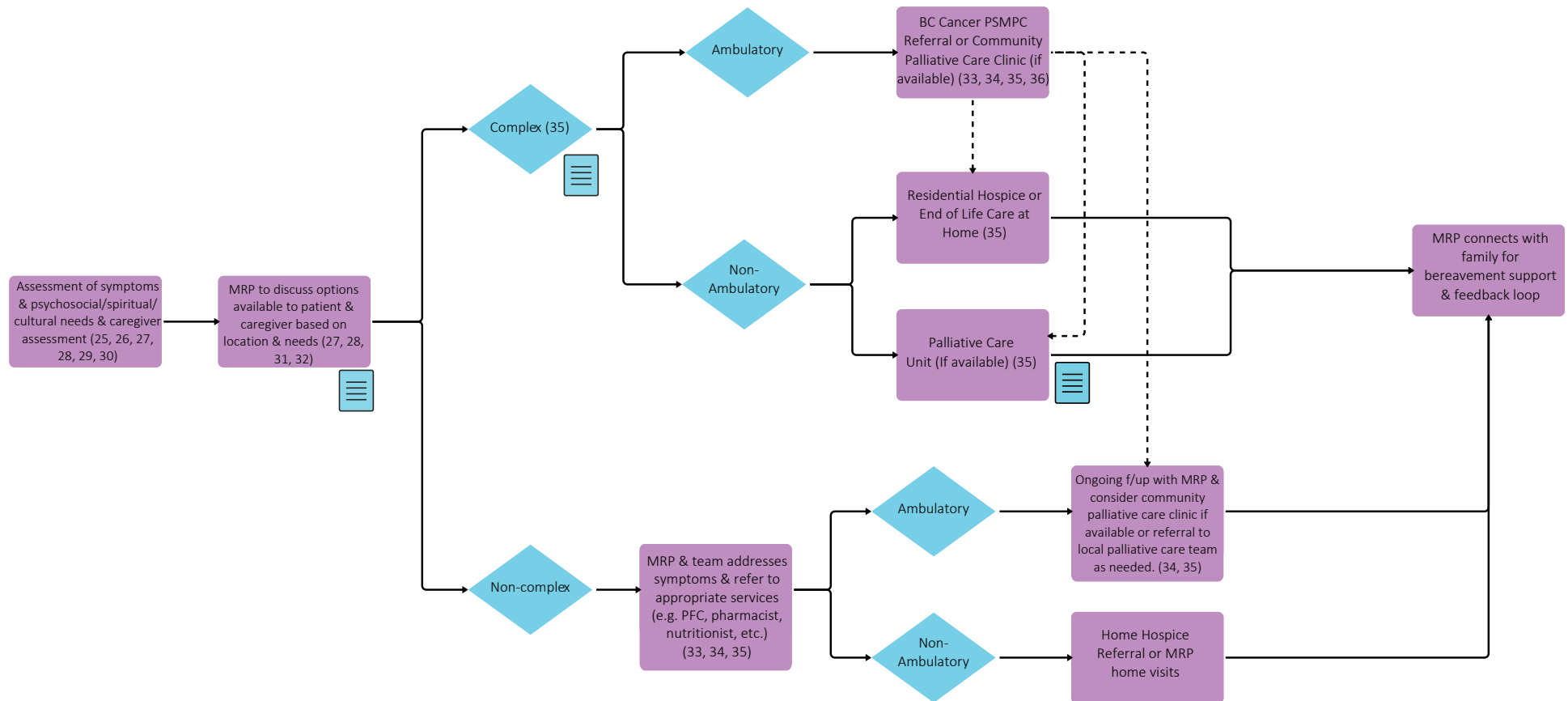


Throughout treatment, consider...

Regular symptom & performance status assessment (10); Supportive care (11, 12); Sexual & reproductive health (13, 14, 15); Co-morbidity management & medication review; Risk factor mitigation; Clinical trials (where applicable) (16, 17); Goals of care (18); Cultural safety (2); Involvement of PCP; Lymphoma Conference/MDC (as needed)

Lymphoma Tumour Group - Hodgkin Lymphoma Pathway

End of Life Care



Throughout treatment, consider...

Goals of Care Discussions & Consideration of Cultural Safety (2, 18, 31, 32, 37, 38, 39, 40)

Lymphoma Tumour Group - Hodgkin Lymphoma Pathway

Subject Matter Expert Working Group & COIs

Kerry Savage, Project Lead, Medical Oncologist
COI Pending

Laurie Sehn, Project Lead, Medical Oncologist
COI pending

Maura Brown, Radiation Oncologist
COI pending

Erma Gardner, Hematologist
COI pending

Jason Hart, Medical Oncologist
No disclosures

Katie Jasper, Radiation Oncologist
No disclosures

Heather Leitch, Hematologist
BeiGene

Andrea Lo, Radiation Oncologist
COI pending

Robert Schmidt, Hematologist
No disclosures

Graham Slack, Pathologist
No disclosures

Elysha Vanderveer, Hematologist
AstraZeneca, AbbVie, Janssen, Kite/Gilead, Eli Lilly

Pathway Program Team

Yashpal Bhatia, Project Coordinator, Tumour Groups
Tammy Currie, Executive Director, Provincial Programs
Amilya Ladak, Manager, Tumour Groups
James Loudon, Director, Provincial Programs
Kalina Nowaczek, Policy Analyst, Tumour Groups
Christine Simmons, Tumour Group Council Chair
Elaine Wai, Senior Executive Director, Medical Affairs and Quality

Other Stakeholders

Family Practice & GPO
Indigenous Cancer Control
Nursing Community of Practice (NCoP)
Patient and Family Experience Team & Supportive Care
Radiation Therapists
Surgical Oncology Network
Provincial Pharmacy, Pathology & Medical Imaging Teams

Appendix

- 1 <http://www.bccancer.bc.ca/health-professionals/professional-resources/clinical-care-pathways>
- 2 <http://www.phsa.ca/aboriginal-health-site/Documents/IPN%20Fillable%20Referral%20Form.pdf>
- 3 <https://cap.phsa.ca/>
- 4 <http://www.bccancer.bc.ca/health-professionals/clinical-resources/chemotherapy-protocols/lymphoma-myeloma#hodgkin>
- 5 <http://www.bccancer.bc.ca/systemic-therapy-site/Documents/Policy%20and%20Forms/Patient%20assistance%20programs.pdf>
- 6 <http://www.bccancer.bc.ca/books/Documents/Clinical%20Care%20Pathways/Patient%20Conference%20Order.pdf>
- 7 <http://www.bccancer.bc.ca/health-professionals/clinical-resources/pharmacy#Contact--info>
- 8 <https://www.bcchildrens.ca/health-professionals/make-referral/cancer-and-blood-disorders-referral>
- 9 http://www.bccancer.bc.ca/chemotherapy-protocols-site/Documents/Supportive%20Care/SCHBV_Protocol.pdf
- 10 <https://www.uptodate.com/contents/image?imageKey=HEME%2F72901>
- 11 <http://www.bccancer.bc.ca/our-services/services/supportive-care>
- 12 <http://www.bccancer.bc.ca/our-services/services/support-programs>
- 13 <https://www.olivefertility.com/referring-physicians>
- 14 <https://www.pacificfertility.ca/physician-resources>
- 15 <http://www.bccancer.bc.ca/health-info/coping-with-cancer/managing-symptoms-side-effects/sexual-health>
- 16 <https://www.bccrc.ca/dept/cid/clinical-trials>
- 17 <https://www.cansarcc.ca/>
- 18 <http://www.bccancer.bc.ca/new-patients-site/Documents/ACP-goals-of-care-orders.pdf>
- 19 <http://www.bccancer.bc.ca/health-professionals-site/Documents/Patient-Referral-Form.pdf>
- 20 <https://pmc.ncbi.nlm.nih.gov/articles/PMC5842098/>
- 21 <http://www.bccancer.bc.ca/our-services/services/late-effects-assessment-follow-up>
- 22 <http://www.bccancer.bc.ca/screening/Documents/Screening-Guidelines.pdf>
- 23 <http://www.bccdc.ca/resource-gallery/Documents/Guidelines%20and%20Forms/Guidelines%20and%20Manuals/Epid/CD%20Manual/Chapter%202%20-%20Imms/Part2/AdultMalignantNeoplasm.pdf>
- 24 <https://www.leukemiabmtprogram.org/>
- 25 <http://www.bccancer.bc.ca/our-services/centres-clinics/bc-cancer-vancouver/epicc>
- 26 https://www2.gov.bc.ca/assets/gov/health/practitioner-pro/bc-guidelines/palliative1_appendix_a.pdf
- 27 <https://www.bc-cpc.ca/symptom-management-guidelines/>
- 28 <https://www2.gov.bc.ca/gov/content/health/practitioner-professional-resources/bc-guidelines/palliative-care>
- 29 <https://www2.gov.bc.ca/gov/content/health/practitioner-professional-resources/pharmacare/prescribers/plan-p-bc-palliative-care-benefits-program>
- 30 <http://www.bccancer.bc.ca/our-services/services/indigenous-cancer-control>
- 31 <http://www.bccancer.bc.ca/new-patients-site/Documents/SeriousIllnessConversationGuideCard.pdf>
- 32 <http://www.phsa.ca/health-info/medical-assistance-in-dying>
- 33 <http://www.bccancer.bc.ca/managing-symptoms-site/Documents/PSMPC-Referral-Form-for-All-BC-Cancer-Centres.pdf>
- 34 <http://www.bccancer.bc.ca/our-services/services/supportive-care/pain-symptom-management#What--we--do>

Appendix

- 35 https://vancouver.pathwaysbc.ca/service_categories/24
- 36 http://www.bccancer.bc.ca/new-patients-site/Documents/MIPPC_Referral_Form.pdf
- 37 <https://www2.gov.bc.ca/assets/gov/people/seniors/health-safety/pdf/myvoice-advancecareplanningguide.pdf>
- 38 <https://www2.gov.bc.ca/gov/content/family-social-supports/seniors/health-safety/advance-care-planning>
- 39 <http://www.bccancer.bc.ca/managing-symptoms-site/Documents/When-Life-Nearing-its-End.pdf>
- 40 <http://www.bccancer.bc.ca/new-patients-site/Documents/ACP-tips-for-oncology-professionals.pdf>
- 41 <http://www.bccancer.bc.ca/health-professionals/clinical-resources/smoking-cessation-program>
- 42 <http://www.bccancer.bc.ca/prevent/alcohol/reduce-your-risk>
- 43 <http://www.phsa.ca/health-professionals/professional-resources/language-services/translation>
- 44 <http://www.bccancer.bc.ca/our-services/services/library>
- 45 <https://www.healthlinkbc.ca/find-care/health-connect-registry>