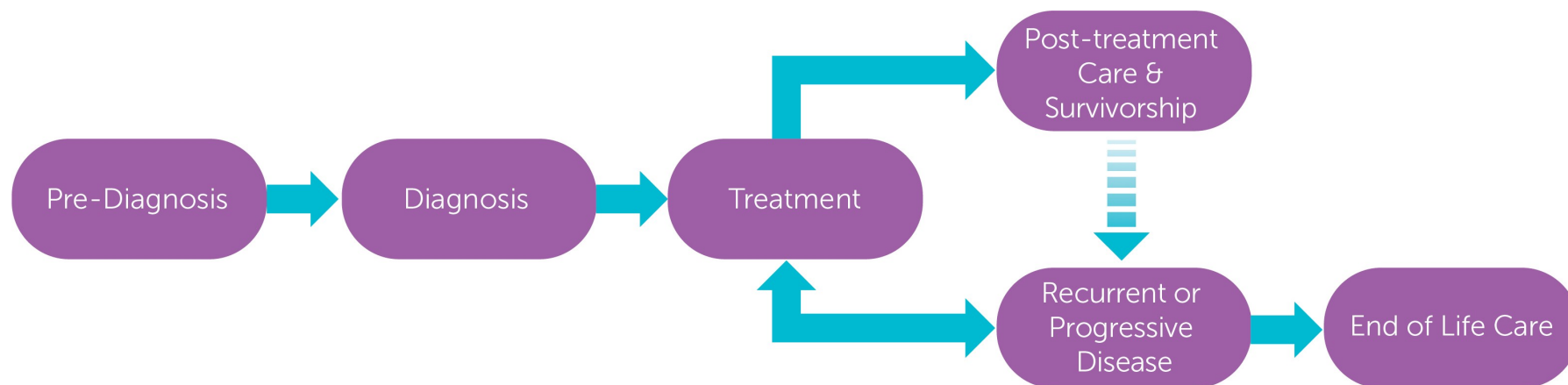


# Sarcoma Tumour Group - Soft Tissue Pathway

## Overarching Pathway



**Primary Care Practitioners**  
(Family Practice)

**Indigenous Cancer Care**

**Supportive Care**

(Counselling, Psychiatry, Nutrition, Speech Language Pathology, Physiotherapy, Pain & Symptom Management/Palliative Care)

This figure represents a general pathway of care that most people with cancer will experience. It shows

- The major phases of a cancer journey
- How a person might progress through each phase
- Key supportive services that are available throughout each person's cancer journey

Please visit the [Clinical Care Pathways](#) Web page for

- Tumour Specific Group Clinical Pathways
- Patient Companion Guide
- Methodology Reports

# Sarcoma Tumour Group - Soft Tissue Pathway

V1 - Created January 2024

V2 - Updated June 2025

## Target Population

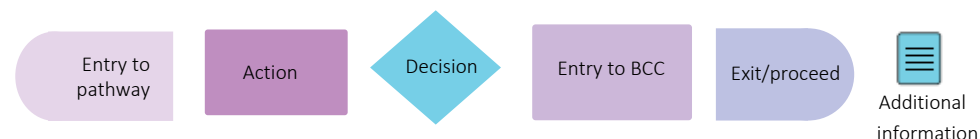
The target population for this pathway include health care providers such as primary care practitioners, oncologists, specialists, nurses, and other members of a health care team including allied health providers. Healthcare administrators across BC Cancer and the health authorities may also benefit from this resource for systems and operational planning.

## Pathway Disclaimer

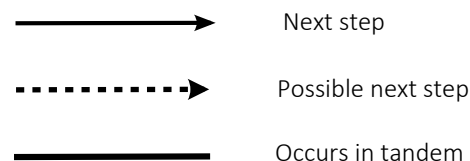
This pathway is an informational resource, intended to provide a high-level overview of the treatment journey a patient in British Columbia may receive. This pathway is not a substitute for medical advice and clinical judgment is still required as not all care trajectories will follow the proposed steps outlined in the pathway. This resource may not reflect all available evidence as research continues to evolve rapidly and BC Cancer is not responsible for any incomplete information. Furthermore, BC Cancer and those involved in developing this pathway are not liable for any incidental or consequential outcomes related to the information in this pathway. Anyone using the information provided in this pathway does so at their own risk.

## Pathway Map Legend

### Shape Guide



### Line Guide



## Pathway Map Considerations

This pathway is intended as a high-level resource and therefore does not include specific recommendations on specific systemic therapy protocols or radiation therapy doses. Instead, additional information can be sought via the inserted hyperlinks to resources that may aid a clinician in their treatment planning. The level of detail for each pathway was guided by the tumor group lead and intentionally kept high-level and represents the overall ideal pathway of care for a patient in general. Each patient will have individual needs and each cancer centre may have variation in the way care is delivered, but overall the intent was to represent the pathway that the majority of patients will follow.

## General Resources

**Indigenous Patient Navigator Referral Form**(6): <http://www.phsa.ca/aboriginal-health-site/Documents/IPN%20Fillable%20Referral%20Form.pdf>  
**Supportive Care** (7): <http://www.bccancer.bc.ca/our-services/services/supportive-care>  
**Compassionate Access Program (CAP)**(8): <https://cap.phsa.ca/>  
**Sarcoma Chemotherapy Protocols**(9): <http://www.bccancer.bc.ca/health-professionals/clinical-resources/chemotherapy-protocols/sarcoma>  
**Manufacturer Patient Assistance Programs**(10): <http://www.bccancer.bc.ca/systemic-therapy-site/Documents/Policy%20and%20Forms/Patient%20assistance%20programs.pdf>  
**BC Cancer Research Clinical Trials** (11): <https://www.bccrc.ca/dept/cid/clinical-trials>  
**Smoking Cessation Program**(40): <http://www.bccancer.bc.ca/health-professionals/clinical-resources/smoking-cessation-program>  
**Alcohol Reduction** (41): <http://www.bccancer.bc.ca/prevent/alcohol/reduce-your-risk>  
**MDC Referral Form** (4): <http://www.bccancer.bc.ca/books/Documents/Clinical%20Care%20Pathways/Patient%20Conference%20Order.pdf>  
**Pharmacy Contact Info** (44): <http://www.bccancer.bc.ca/health-professionals/clinical-resources/pharmacy#Contact--info>  
**Pediatric Oncology Hematology Network Referral Form**(45): <http://www.bcchildrens.ca/health-professionals/refer-a-patient/oncology-referral>  
**Health Connect Registry** (46): <https://www.healthlinkbc.ca/find-care/health-connect-registry>

## Abbreviations

**GPO:** General Practitioner in Oncology  
**HCP:** Hereditary Cancer Program  
**MDC:** Multidisciplinary Conference/Discussion  
**MRP:** Most Responsible Provider  
**PCP:** Primary Care Provider  
**PFC:** Patient & Family Counseling  
**PSMPC:** Pain & Symptom Management & Palliative Care  
**RT:** Radiation Therapy  
**ST:** Systemic Therapy  
**STS:** Soft Tissue Sarcoma

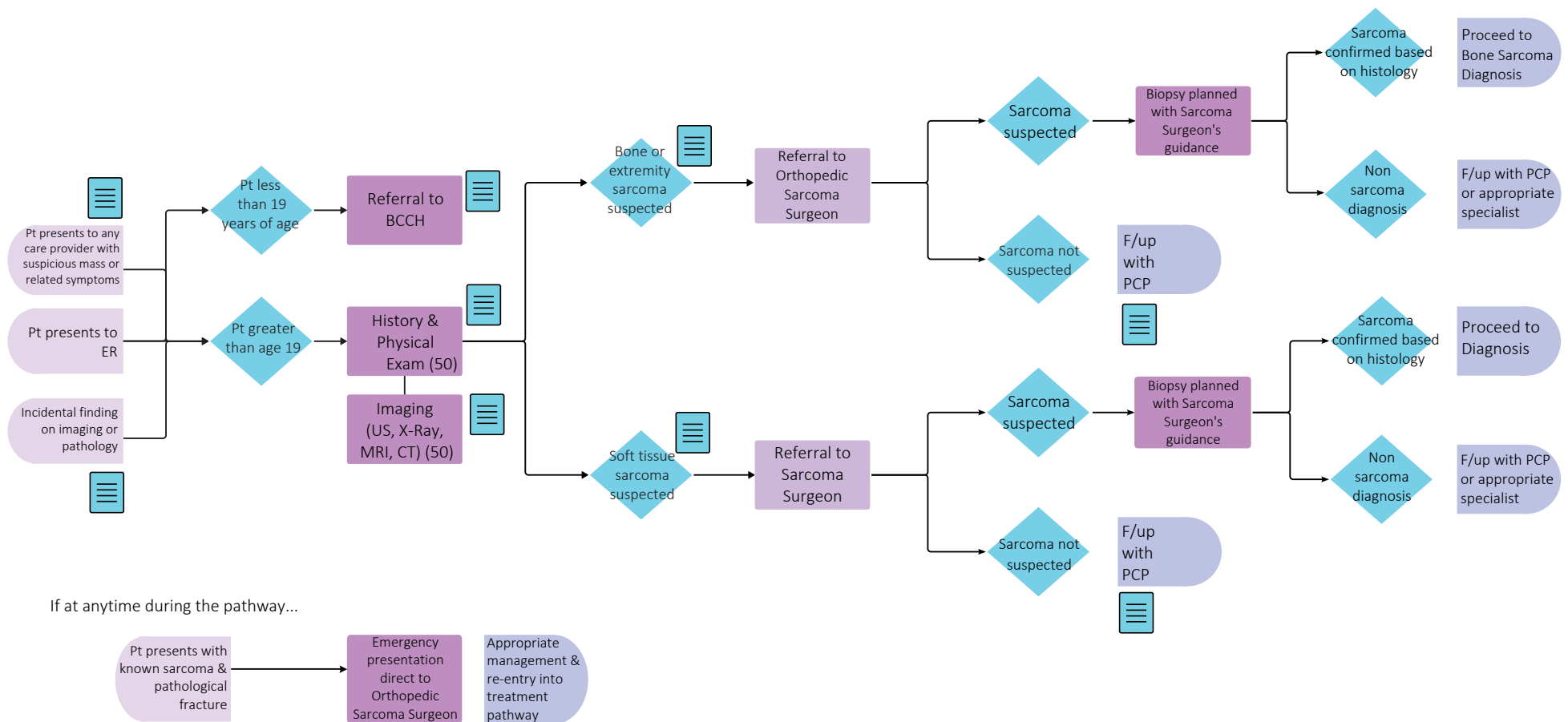
## Additional Information

To learn more about how the Clinical Care Pathways are developed, visit the [Methodology Report](#).

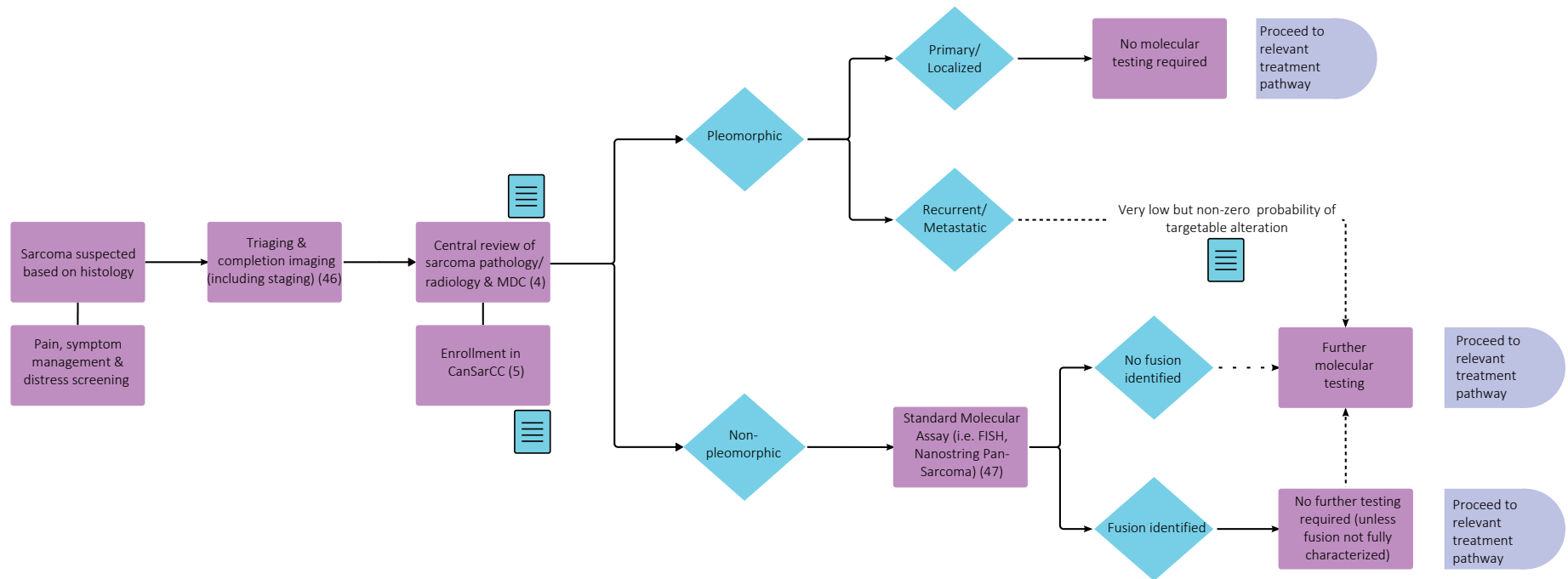
Other Tumour Group Clinical Care Pathways can be found on the [BC Cancer Website](#).

# Sarcoma Tumour Group - Soft Tissue Pathway

## Pre-Diagnosis



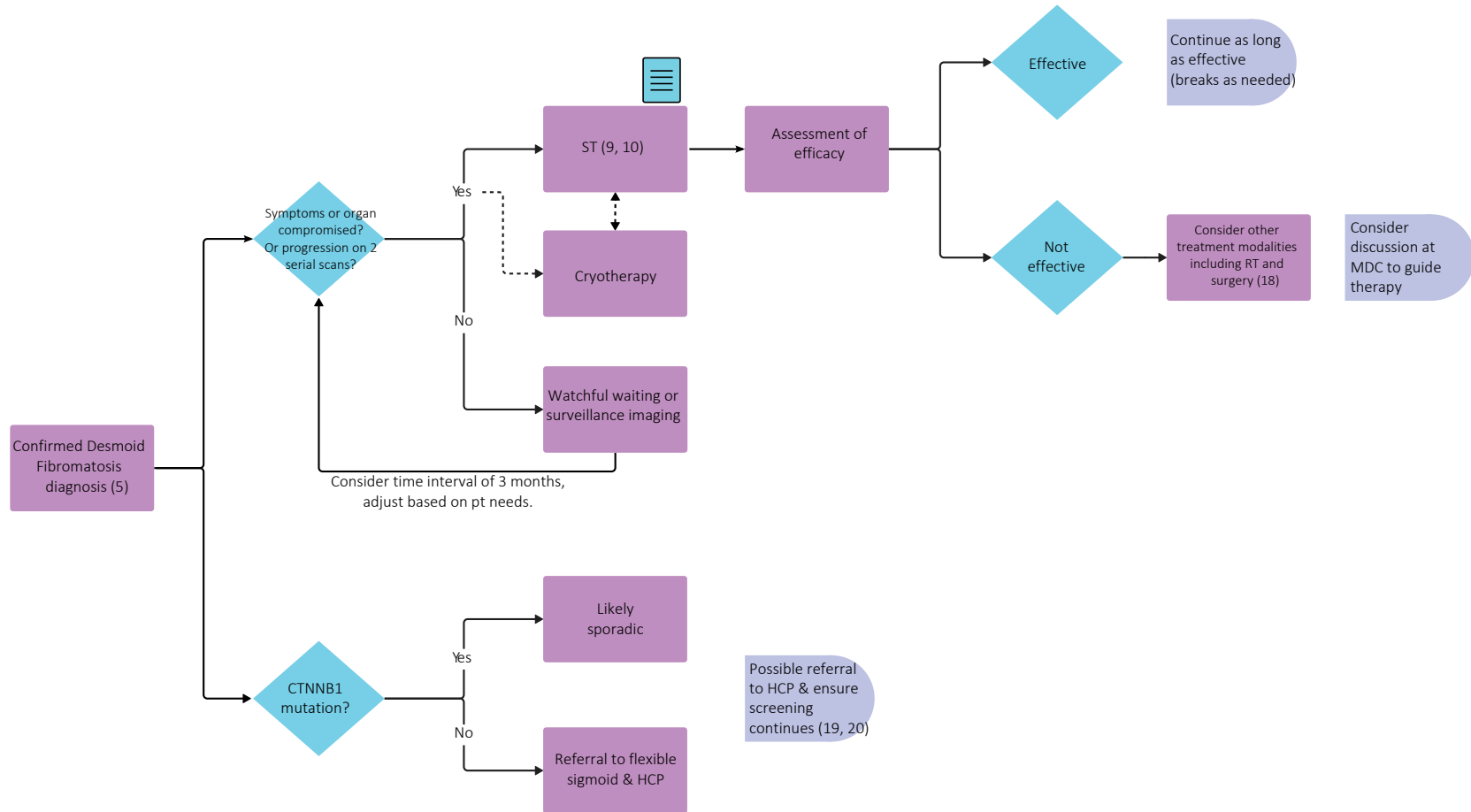
## Diagnosis



Throughout treatment, consider...

Regular symptom & performance status assessment (12); Supportive care including physiotherapy and limb rehabilitation (7, 13); Sexual & reproductive health (14, 15, 16); Co-morbidity management & medication review; Risk factor mitigation; Clinical trials (5, 11) (where applicable); Goals of care (17); Cultural safety (6); Involvement of PCP

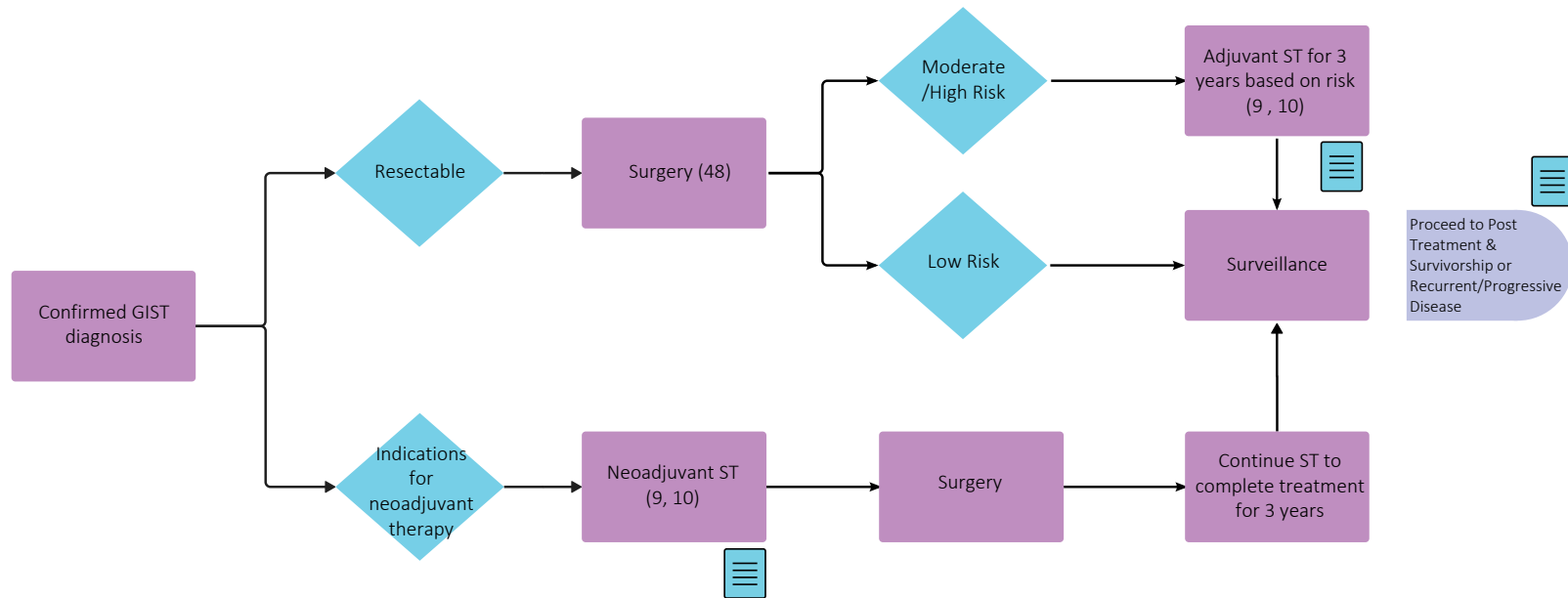
## Treatment - Desmoid Fibromatosis



Throughout treatment, consider...

Regular symptom & performance status assessment (12); Supportive care including physiotherapy and limb rehabilitation (7, 13); Sexual & reproductive health (14, 15, 16); Co-morbidity management & medication review; Risk factor mitigation; Clinical trials (5, 11) (where applicable); Goals of care (17); Cultural safety (6); Involvement of PCP

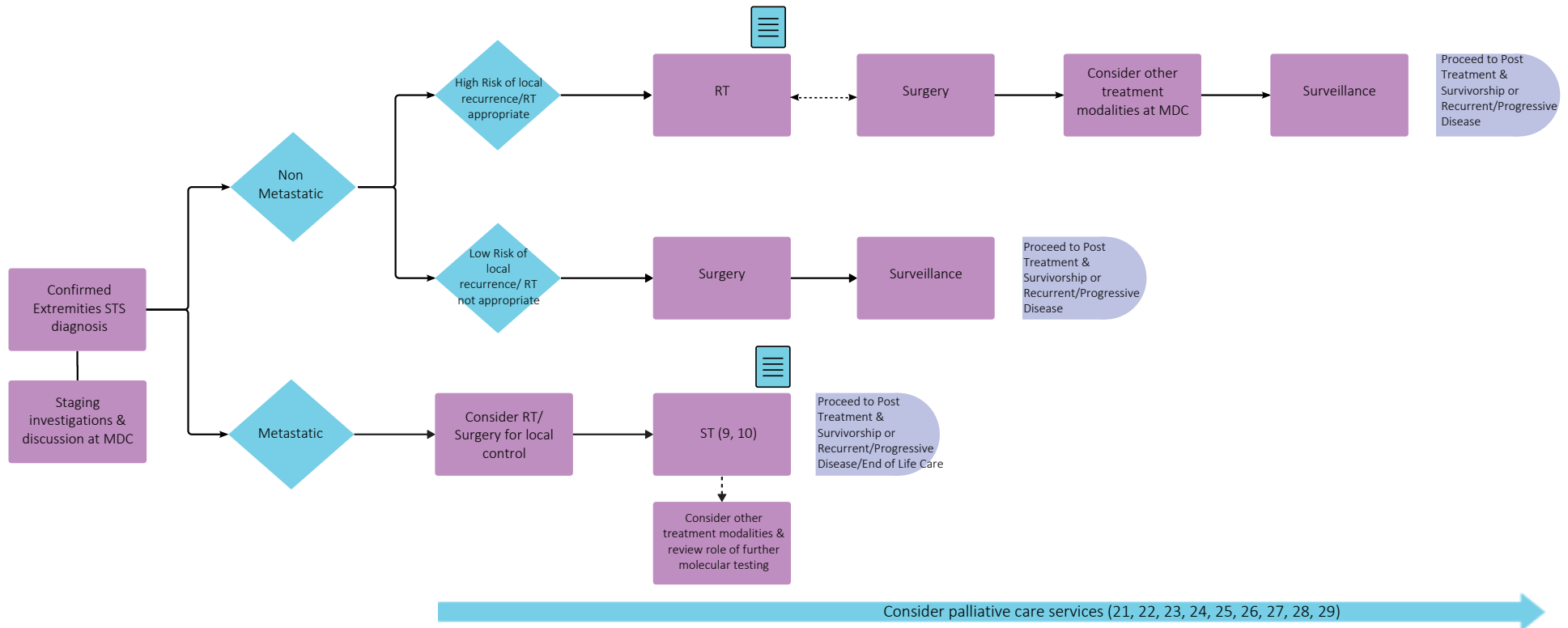
## Treatment - GIST Local Disease Only



Throughout treatment, consider...

Regular symptom & performance status assessment (12); Supportive care including physiotherapy and limb rehabilitation (7, 13); Sexual & reproductive health (14, 15, 16); Co-morbidity management & medication review; Risk factor mitigation; Clinical trials (5, 11) (where applicable); Goals of care (17); Cultural safety (6); Involvement of PCP

## Treatment - Extremities Soft Tissue Sarcoma

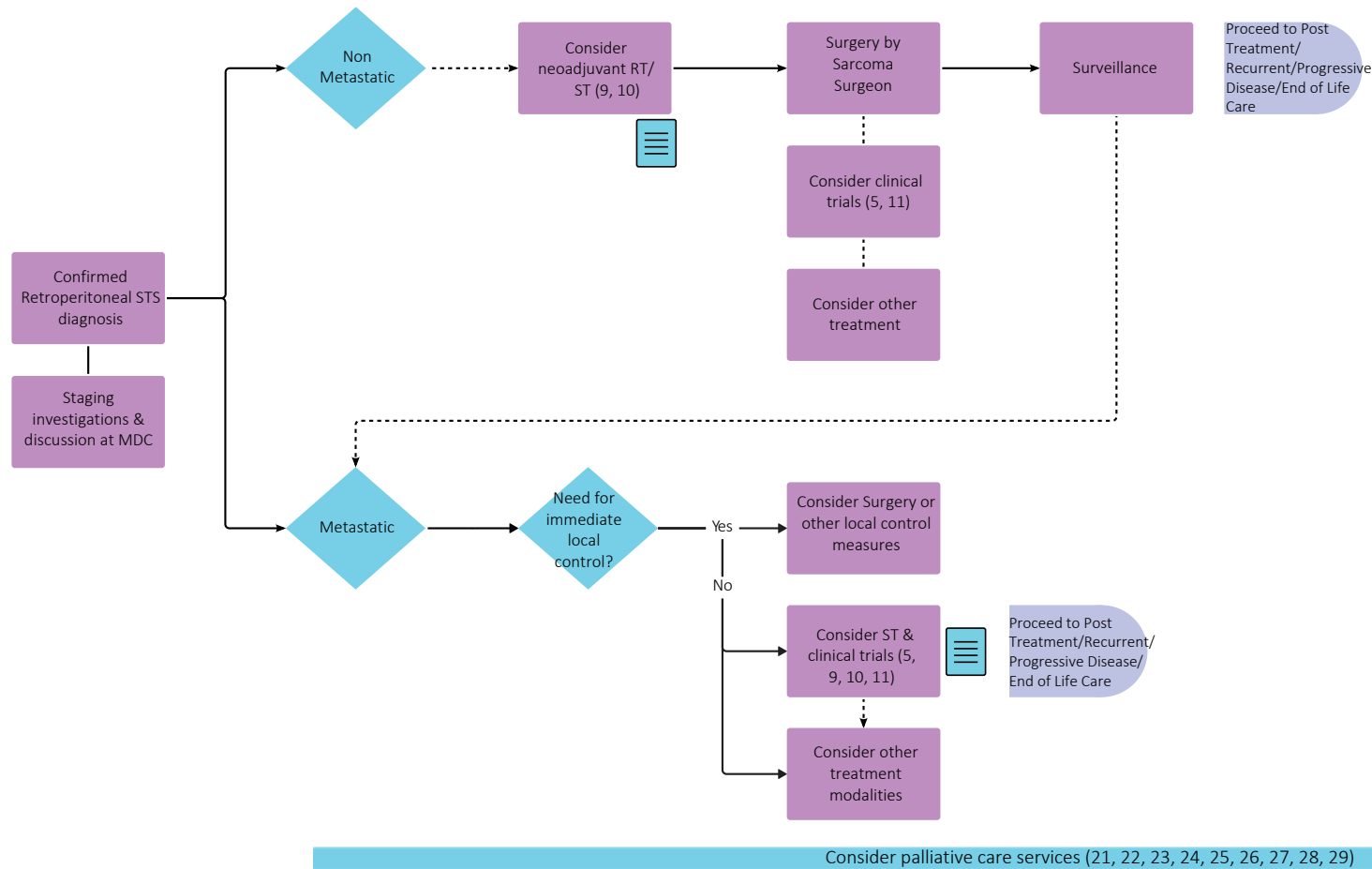


Throughout treatment, consider...

Regular symptom & performance status assessment (12); Supportive care including physiotherapy and limb rehabilitation (7, 13); Sexual & reproductive health (14, 15, 16); Co-morbidity management & medication review; Risk factor mitigation; Clinical trials (5, 11) (where applicable); Goals of care (17); Cultural safety (6); Involvement of PCP



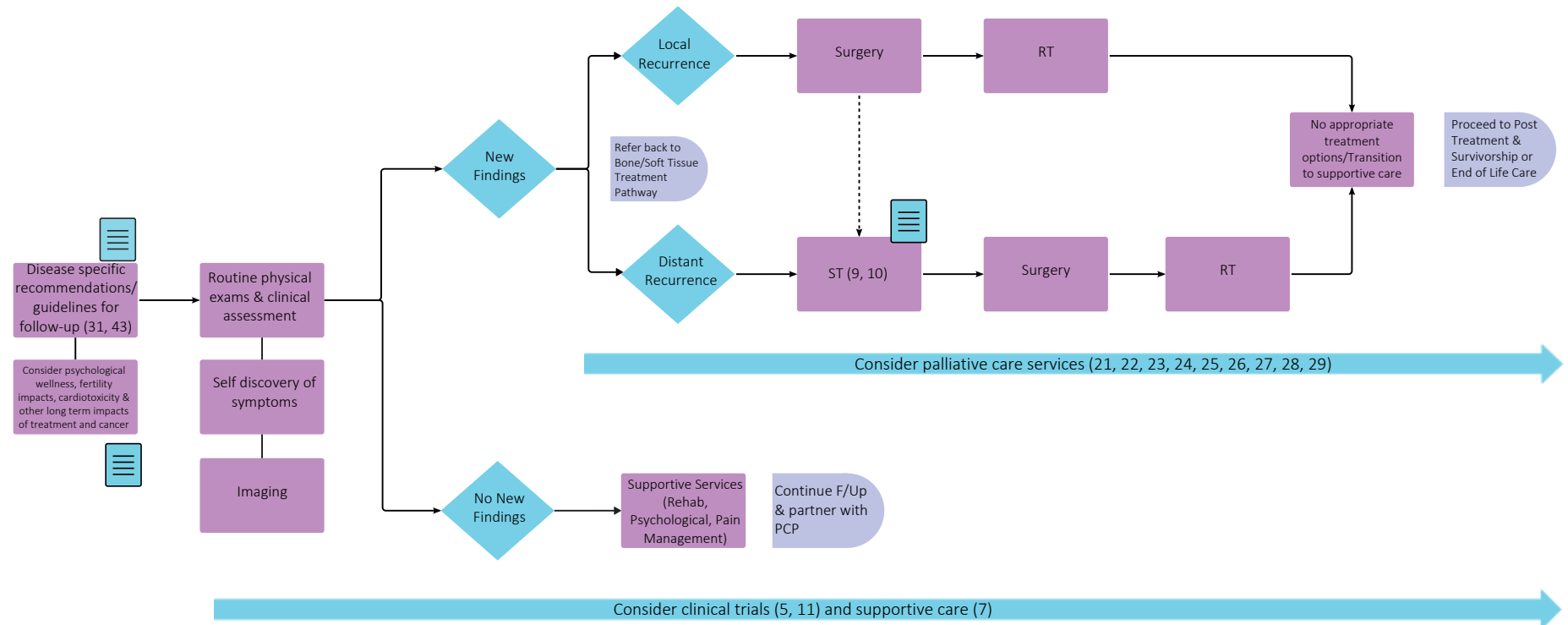
## Treatment - Retroperitoneal Soft Tissue Sarcoma



Throughout treatment, consider...

Regular symptom & performance status assessment (12); Supportive care including physiotherapy and limb rehabilitation (7, 13); Sexual & reproductive health (14, 15, 16); Co-morbidity management & medication review; Risk factor mitigation; Clinical trials (5, 11) (where applicable); Goals of care (17); Cultural safety (6); Involvement of PCP

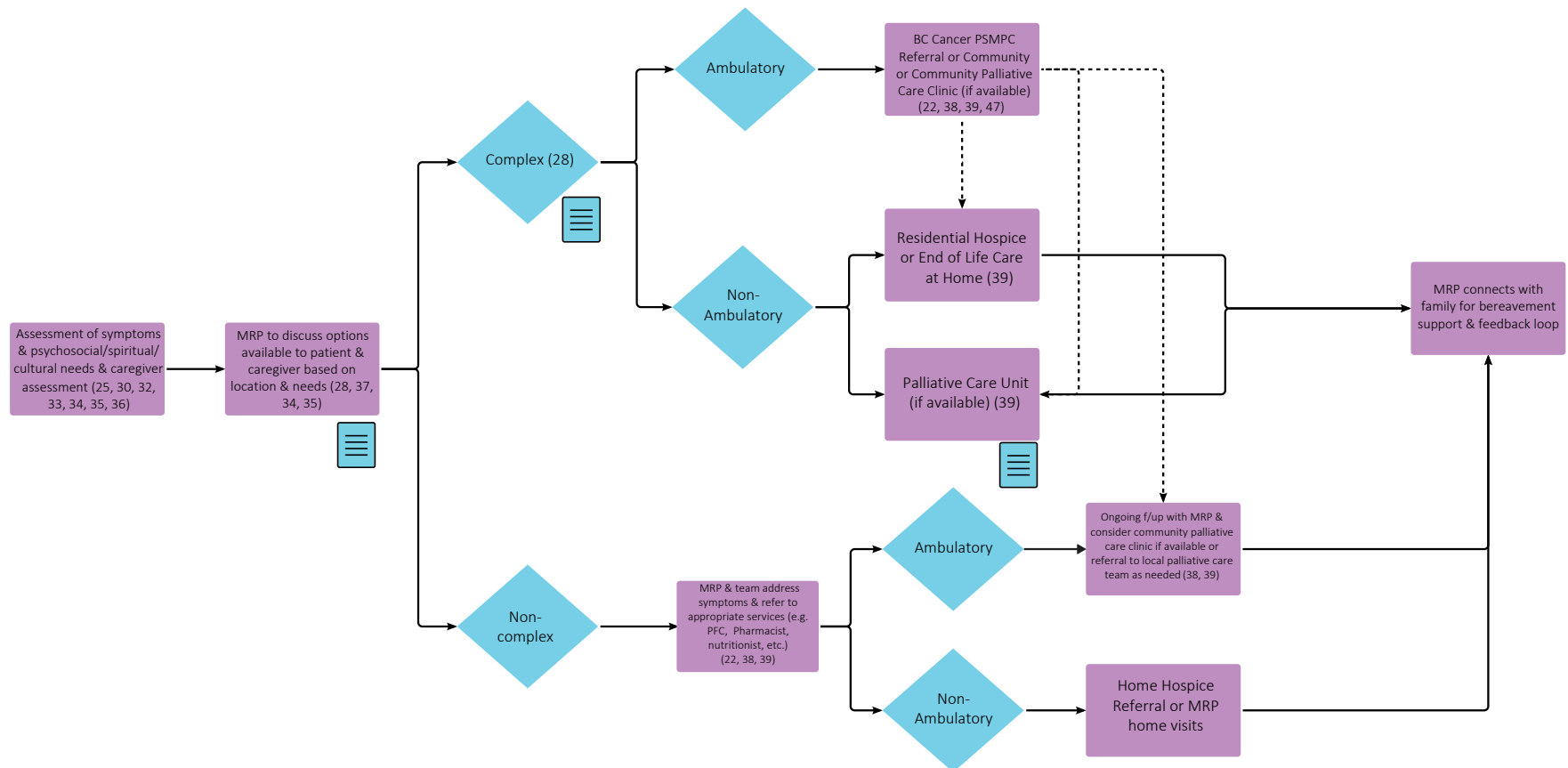
## Post- Treatment & Survivorship Recurrent or Progressive Disease



Throughout treatment, consider...

Regular symptom & performance status assessment (12); Sexual & reproductive health (14, 15, 16); Co-morbidity management & medication review; Risk factor mitigation; Goals of care (17); Cultural safety (6); Involvement of PCP

## End of Life Care



Throughout treatment, consider...

Goal of Care Discussion & Consideration of Cultural Safety (6, 17, 24, 26, 27, 28, 29, 42)

## Subject Matter Expert Working Group & COIs

**Christine Simmons**, Project Lead, Medical Oncologist  
Pfizer, Merck, Roche, Novartis, Medison, Gilead, Amgen, Lilly, BI

**Raphael Charest-Morin**, Spine Surgeon  
Cerapecics, NASS translational award, AOSpine Innovation and discovery Award, New frontiers in Research-Exploration Grant, VCH Research Institute Investigation Award

**Paul Clarkson**, Orthopedic Oncologist  
No disclosures

**Catherine Clelland**, Family Physician  
No disclosures

**Caroline Holloway**, Radiation Oncologist  
BI

**Paul Mallinson**, Radiologist  
Canadian Association of Radiologists CT Accreditation Program

**Tony Ng**, Pathologist  
Bayer, Roche

**Sita Ollek**, Surgical Oncologist  
No disclosures

**Rod Rassekh**, Pediatric Oncologist  
Jazz, CIHR, US Dept of Defense, Genome Canada, Alex's Lemonade Stand Foundation, KIPS law firm

**Alannah Smrke**, Medical Oncologist  
Bayer, GSK, Roche, BI

## Pathway Program Team

**Tammy Currie**, Executive Director, Provincial Programs  
**Amilya Ladak**, Policy Analyst, Tumour Groups  
**Shaifa Nanji**, Manager, Tumour Groups  
**Sonia Panesar**, Project Coordinator, Tumour Groups  
**Christine Simmons**, Tumour Group Council Chair  
**Elaine Wai**, Senior Executive Director, Medical Affairs and Quality  
**Sarah Weller**, Director, Provincial Programs

## Other Stakeholders

Family Practice & GPO  
Indigenous Cancer Control  
Nursing Community of Practice (NCoP)  
Patient and Family Experience team  
Provincial Pharmacy  
Radiation Therapists  
Surgical Oncology Network

## Subject Matter Expert Working Group & COIs

**Christine Simmons**, Project Lead, Medical Oncologist  
Pfizer, Merck, Roche, Novartis, Medison, Gilead, Amgen, Lilly, BI

**Raphael Charest-Morin**, Spine Surgeon  
Cerapecids, NASS translational award, AOSpine Innovation and discovery Award, New frontiers in Research-Exploration Grant, VCH Research Institute Investigation Award

**Paul Clarkson**, Orthopedic Oncologist  
No disclosures

**Catherine Clelland**, Family Physician  
No disclosures

**Caroline Holloway**, Radiation Oncologist  
No disclosures

**Paul Mallinson**, Radiologist  
Canadian Association of Radiologists CT Accreditation Program

**Tony Ng**, Pathologist  
Bayer, Roche

**Sita Ollek**, Surgical Oncologist  
No disclosures

**Rod Rassekh**, Pediatric Oncologist  
Jazz, CIHR, US Dept of Defense, Genome Canada, Alex's Lemonade Stand Foundation, KIPS law firm

**Alannah Smrke**, Medical Oncologist  
Bayer, GSK, Roche, BI

Thank you to the clinicians and patient partners who attended the March 19, 2025 annual review meeting.

## Pathway Program Team

**Yashpal Bhatia**, Project Coordinator, Tumour Groups  
**Tammy Currie**, Executive Director, Provincial Programs  
**Amilya Ladak**, Manager, Tumour Groups  
**James Loudon**, Director, Provincial Programs  
**Kalina Nowaczek**, Policy Analyst, Tumour Groups  
**Christine Simmons**, Tumour Group Council Chair  
**Elaine Wai**, Senior Executive Director, Medical Affairs and Quality

## Other Stakeholders

Family Practice & GPO  
Indigenous Cancer Control  
Nursing Community of Practice (NCoP)  
Patient and Family Experience team  
Provincial Pharmacy  
Radiation Therapists  
Sarcoma Tumour Group Members  
Surgical Oncology Network

## Appendix

1. <http://www.bccancer.bc.ca/health-info/clinical-care-pathways>
2. <http://www.bccancer.bc.ca/health-professionals-site/Documents/Patient-Referral-Form.pdf>
3. <http://www.bccancer.bc.ca/books/Documents/Clinical%20Care%20Pathways/RP%20Sarcoma%20biopsy%20guidelines.pdf>
4. <http://www.bccancer.bc.ca/books/Documents/Clinical%20Care%20Pathways/Patient%20Conference%20Order.pdf>
5. <https://www.cansarcc.ca/>
6. <http://www.phsa.ca/aboriginal-health-site/Documents/IPN%20Fillable%20Referral%20Form.pdf>
7. <http://www.bccancer.bc.ca/our-services/services/supportive-care>
8. <https://cap.phsa.ca/>
9. <http://www.bccancer.bc.ca/health-professionals/clinical-resources/chemotherapy-protocols/sarcoma>
10. <http://www.bccancer.bc.ca/systemic-therapy-site/Documents/Policy%20and%20Forms/Patient%20assistance%20programs.pdf>
11. <https://www.bccrc.ca/dept/cid/clinical-trials>
12. <https://www.uptodate.com/contents/image?imageKey=HEME%2F72901>
13. <http://www.bccancer.bc.ca/our-services/services/support-programs>
14. <https://www.olivefertility.com/referring-physicians>
15. <https://www.pacificfertility.ca/physician-resources>
16. <http://www.bccancer.bc.ca/health-info/coping-with-cancer/managing-symptoms-side-effects/sexual-health>
17. <http://www.bccancer.bc.ca/new-patients-site/Documents/ACP-goals-of-care-orders.pdf>
18. [https://www.ejcancer.com/article/S0959-8049\(19\)30832-9/fulltext](https://www.ejcancer.com/article/S0959-8049(19)30832-9/fulltext)
19. [http://www.bccancer.bc.ca/coping-and-support-site/Documents/Hereditary%20Cancer%20Program/HCP\\_Form-ReferralForm.pdf](http://www.bccancer.bc.ca/coping-and-support-site/Documents/Hereditary%20Cancer%20Program/HCP_Form-ReferralForm.pdf)
20. <https://www2.gov.bc.ca/gov/content/health/practitioner-professional-resources/bc-guidelines/colorectal-cancer-part2>
21. <http://www.bccancer.bc.ca/our-services/services/supportive-care/pain-symptom-management>
22. <http://www.bccancer.bc.ca/managing-symptoms-site/Documents/PSMPC-Referral-Form-for-All-BC-Cancer-Centres.pdf>
23. <http://www.bccancer.bc.ca/new-patients-site/Documents/Goals%20of%20Care%20Orders%20Form%20June%202018%20Final.pdf>
24. <https://www2.gov.bc.ca/assets/gov/people/seniors/health-safety/pdf/myvoice-advancedcareplanningguide.pdf>
25. <https://www2.gov.bc.ca/gov/content/health/practitioner-professional-resources/pharmacare/prescribers/plan-p-bc-palliative-care-benefits-program>
26. <http://www.bccancer.bc.ca/new-patients-site/Documents/SeriousIllnessConversationGuideCard.pdf>
27. <http://www.bccancer.bc.ca/managing-symptoms-site/Documents/When-Life-Nearing-its-End.pdf>
28. <http://www.phsa.ca/health-info/medical-assistance-in-dying>
29. <http://www.bccancer.bc.ca/new-patients-site/Documents/ACP-tips-for-oncology-professionals.pdf>
30. <http://www.bccancer.bc.ca/books/Documents/Clinical%20Care%20Pathways/Revised%20PSMPC%20Questionnaire%20Pink%20Form%202020-21.pdf>
31. <http://survivorshipguidelines.org/>
32. <http://www.bccancer.bc.ca/our-services/centres-clinics/bc-cancer-vancouver/epicc>
33. [https://www2.gov.bc.ca/assets/gov/health/practitioner-pro/bc-guidelines/palliative1\\_appendix\\_a.pdf](https://www2.gov.bc.ca/assets/gov/health/practitioner-pro/bc-guidelines/palliative1_appendix_a.pdf)
34. <https://www.bc-cpc.ca/publications/symptom-management-guidelines/>
35. <https://www2.gov.bc.ca/gov/content/health/practitioner-professional-resources/bc-guidelines/palliative-care>
36. <http://www.bccancer.bc.ca/our-services/services/indigenous-cancer-control>
37. <http://www.bccancer.bc.ca/new-patients-site/Documents/SeriousIllnessConversationGuideCard.pdf>
38. <http://www.bccancer.bc.ca/our-services/services/supportive-care/pain-symptom-management#What--we--do>
39. [https://vancouver.pathwaysbc.ca/service\\_categories/24](https://vancouver.pathwaysbc.ca/service_categories/24)
40. <http://www.bccancer.bc.ca/health-professionals/clinical-resources/smoking-cessation-program>
41. <http://www.bccancer.bc.ca/prevent/alcohol/reduce-your-risk>
42. <https://www2.gov.bc.ca/gov/content/family-social-supports/seniors/health-safety/advance-care-planning>
43. <https://clinicalsarcomaresearch.biomedcentral.com/articles/10.1186/s13569-016-0060-4#Sec71>
44. <http://www.bccancer.bc.ca/health-professionals/clinical-resources/pharmacy#Contact--info>
45. <http://www.bcchildrens.ca/health-professionals/refer-a-patient/oncology-referral>
46. [https://www.facs.org/media/j30havyf/ajcc\\_7thed\\_cancer\\_staging\\_manual.pdf](https://www.facs.org/media/j30havyf/ajcc_7thed_cancer_staging_manual.pdf)
47. <https://cancergeneticslab.ca/requisitions/>
48. <https://editbccca.phsa.ca/books/Documents/Clinical%20Care%20Pathways/Risk%20stratification%20table%20for%20pg%207%20of%20soft%20tissue%20sarcoma.png>
49. <https://www.healthlinkbc.ca/find-care/health-connect-registry>
50. [https://bcmj.org/sites/default/files/BCMj\\_50Vol6\\_softtissue.pdf#page=4](https://bcmj.org/sites/default/files/BCMj_50Vol6_softtissue.pdf#page=4)