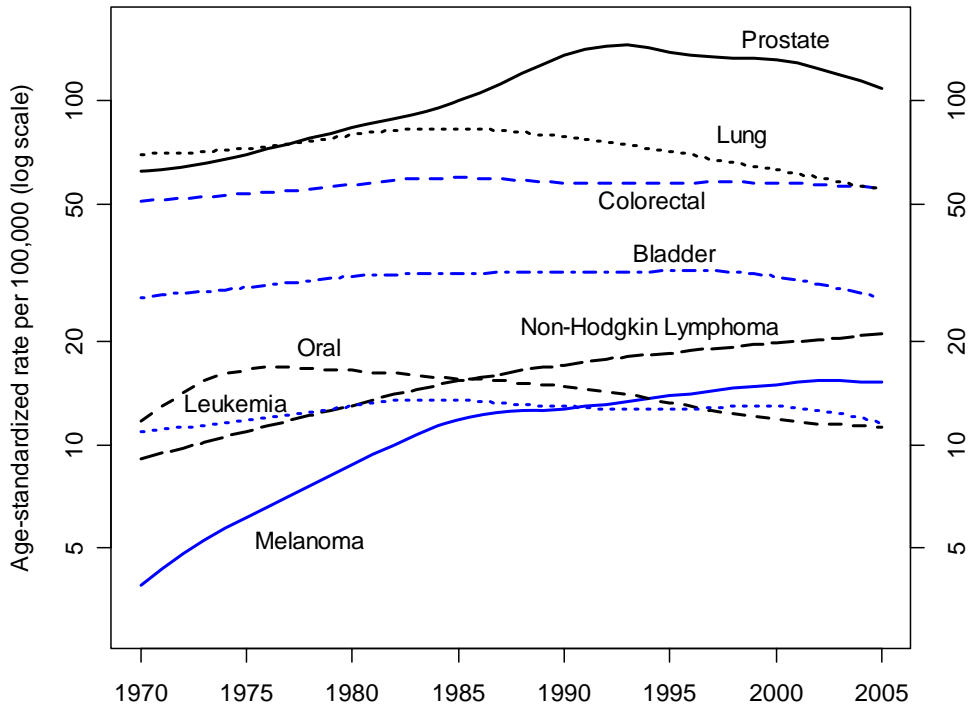
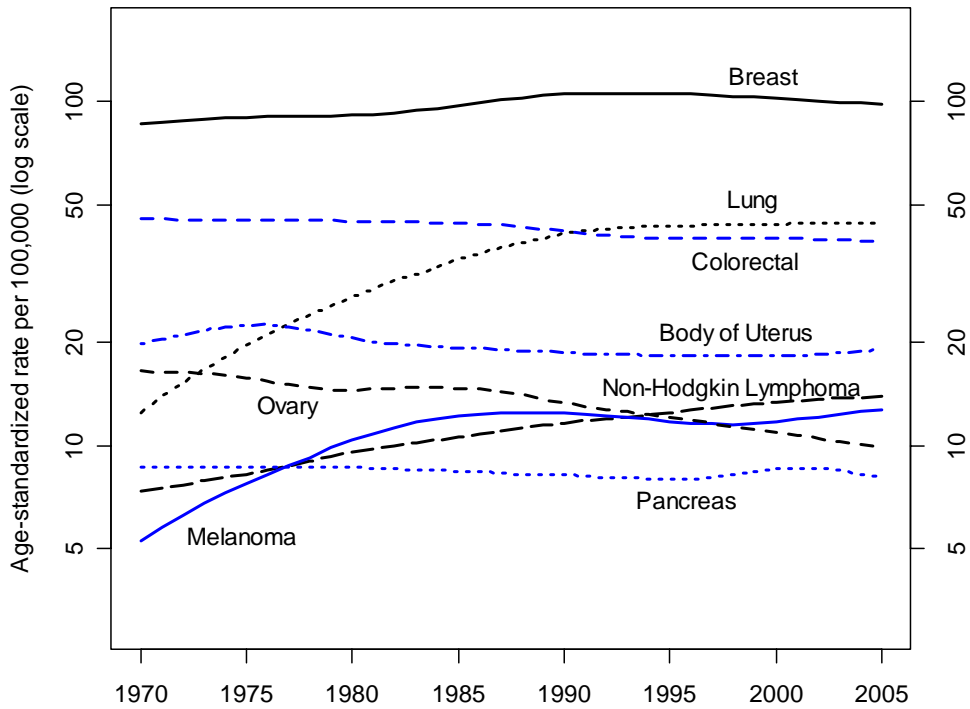


## Trends in BC Age Standardized Incidence Rates by Year of Diagnosis, Tumour Type and Gender for Diagnosis Years 1970 to 2005

### Male



### Female



Source: BC Cancer Registry    Date Retrieved: September 2007    Prepared By: Population Oncology

Population Estimates: BC Stats (P.E.O.P.L.E. 32)