



BC Cancer Agency

CARE & RESEARCH

An agency of the Provincial Health Services Authority

Cancer in Young Adults 2005



BC Cancer Agency

CARE & RESEARCH

An agency of the Provincial Health Services Authority

Contact

This report was prepared by:

**The Surveillance & Outcomes Unit
Population Oncology**

Email: datareq@bccancer.bc.ca

Andy Coldman, Vice President

Norm Phillips, Health Outcomes Scientist

Sherry Reid, Data Analyst Coordinator

Publication Date: October 2007

BC Cancer Agency Website: www.bccancer.bc.ca

This report is intended for color reproduction.



Table of Contents

DESCRIPTION OF MATERIAL4

CANCER DIAGNOSES AND DEATHS IN BC YOUNG ADULTS (AGE 20-44) BY CANCER TYPE IN 20055

CANCER DIAGNOSES AND DEATHS IN BC YOUNG (AGE 20-44) AND MIDDLE AGED ADULTS (AGE 45-69) BY GENDER AND YEAR6

3 & 5 YEAR RELATIVE SURVIVAL RATES BY CANCER TYPE FOR BC YOUNG (AGE 20-44) AND MIDDLE AGED ADULTS (AGE 45-69) DIAGNOSED IN 1995-20057

AGE-STANDARDIZED CANCER INCIDENCE AND MORTALITY RATES IN BC YOUNG ADULTS (AGE 20-44) AND BC ADULTS (AGE 45-69) BY GENDER AND YEAR8



Description of Material

This report provides the following statistical data on the distribution of cancer in young adults in British Columbia:

- cancer diagnoses and deaths in BC young adults (age 20-44) by cancer type in 2005
- cancer diagnoses and deaths in BC young (age 20-44) and middle aged adults (age 45-69) by gender and year
- 3 & 5 year relative survival rates by cancer type for BC young (age 20-44) and middle aged adults (age 45-69) diagnosed in 1996-2005
- age-standardized cancer incidence and mortality rates in BC young adults (age 20-44) and BC adults (age 45-69) by gender and year

Cancer Cases Used In This Report Satisfied The Following Criteria *(unless otherwise specified)*

The data used in this report was obtained from the BC Cancer Registry (*incidence*), BC Vital Statistics Agency (*mortality*) and BC STATS (*population estimates P.E.O.P.L.E 32 for survival estimates*).

Incidence

- includes BC residents at time of diagnosis
- includes invasive/malignant cases (*excludes in-situ (except bladder) and benign neoplasms*)
- excludes non-melanoma skin cancers (basal and squamous)

Mortality

- includes BC residents at time of death

Survival Estimates

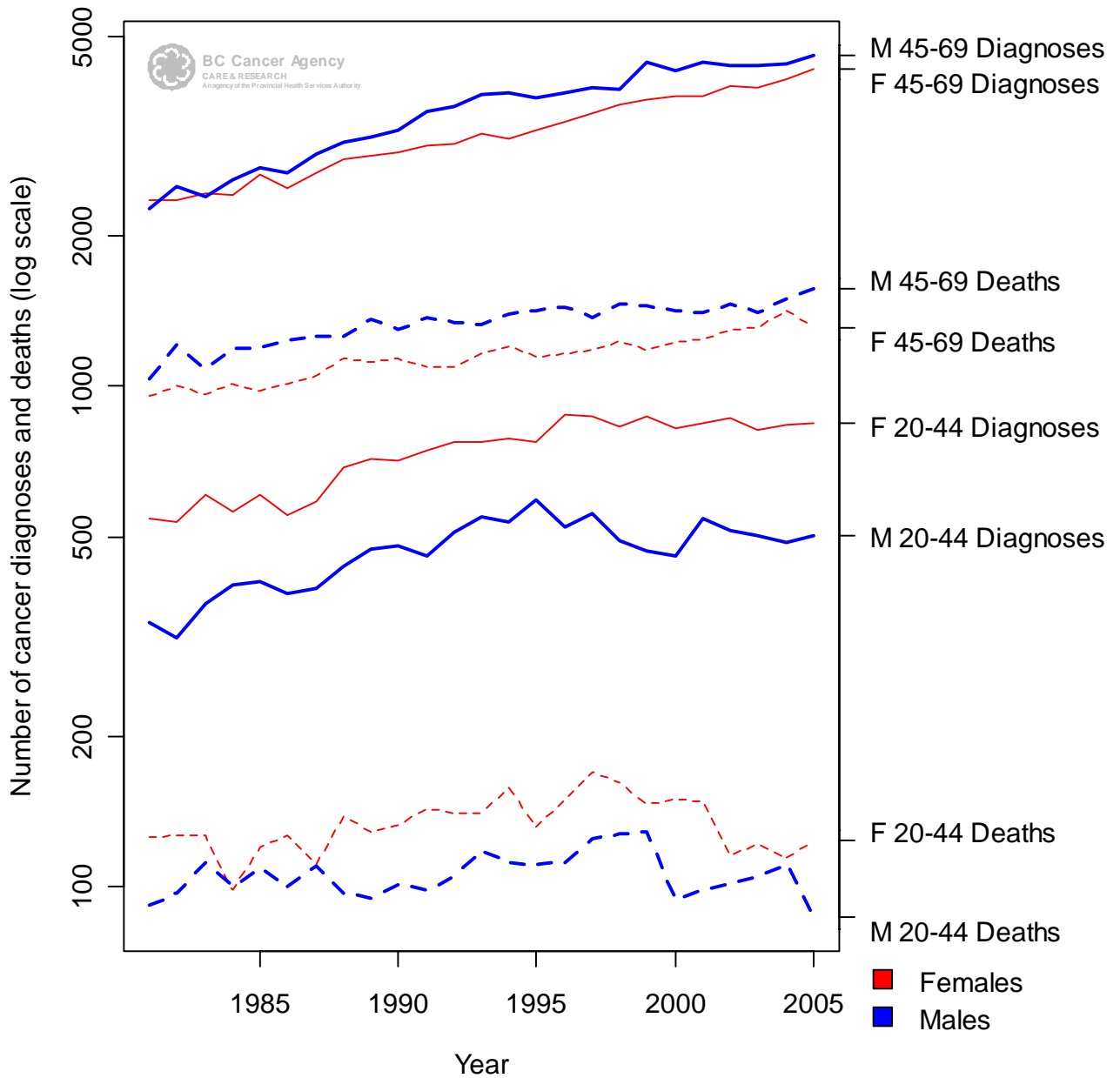
- includes individuals' first diagnosed cancers only
- excludes autopsy only cases
- excludes death certificate only (DCO) cases

**Cancer Diagnoses and Deaths in BC Young Adults (Age 20-44) by Cancer Type in 2005**

Cancer Type	Cancer Diagnoses		Cancer Deaths	
	Male	Female	Male	Female
Bladder	11	6	0	0
Body of Uterus	0	29	0	1
Brain	22	17	11	14
Breast	0	317	0	40
Cervix	0	66	0	5
Colorectal	49	36	10	8
Esophagus	4	0	4	0
Hodgkin Lymphoma	22	24	1	1
Kidney	22	8	2	0
Larynx	0	0	0	0
Leukemia	18	15	5	3
Lung	15	14	6	11
Melanoma	53	87	8	4
Multiple Myeloma	2	1	1	0
Non-Hodgkin Lymphoma	49	33	8	5
Oral	24	14	6	3
Ovary	0	34	0	8
Pancreas	2	3	5	2
Prostate	5	0	0	0
Stomach	10	8	2	5
Testis	99	0	1	0
Thyroid	20	76	0	0
All Other Cancers	78	56	17	14
Total	505	844	87	124



Cancer Diagnoses and Deaths in BC Young (Age 20-44) and Middle Aged Adults (Age 45-69) by Gender and Year



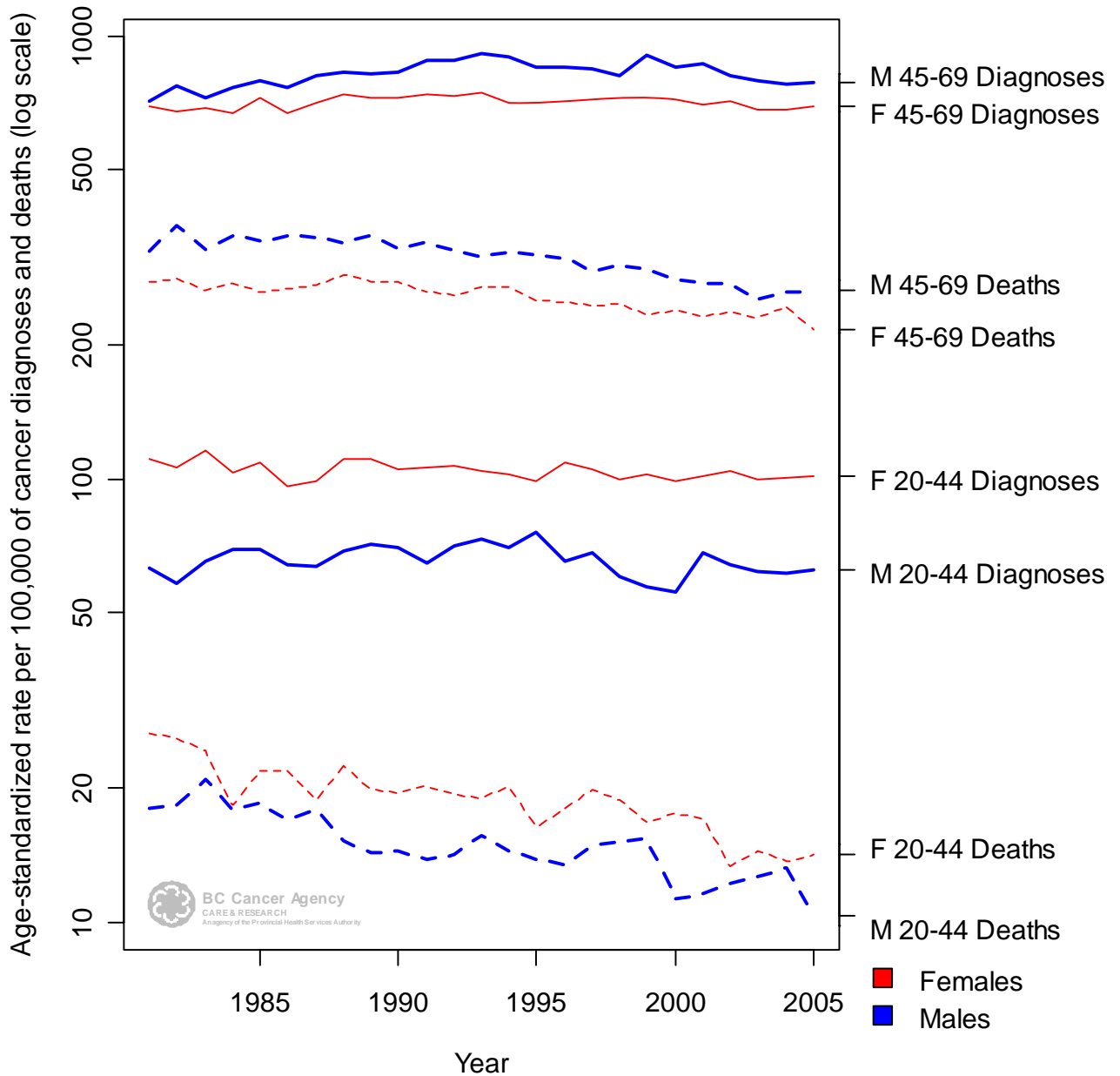


3 & 5 Year Relative Survival Rates by Cancer Type for BC Young (Age 20-44) and Middle Aged Adults (Age 45-69) Diagnosed in 1996-2005

Cancer Type	3 Year Survival		5 Year Survival	
	20-44	45-69	20-44	45-69
Bladder	0.936	0.857	0.932	0.83
Body of Uterus	0.954	0.923	0.928	0.901
Brain	0.652	0.178	0.581	0.15
Breast	0.915	0.934	0.852	0.895
Cervix	0.874	0.748	0.842	0.71
Colorectal	0.7	0.707	0.65	0.637
Esophagus	0.224	0.216	0.187	0.172
Hodgkin Lymphoma	0.972	0.882	0.955	0.855
Kidney	0.807	0.692	0.787	0.646
Larynx	0.666	0.703	0.635	0.616
Leukemia	0.7	0.679	0.662	0.61
Lung	0.271	0.208	0.228	0.167
Melanoma	0.964	0.949	0.948	0.925
Multiple Myeloma	0.753	0.535	0.613	0.367
Non-Hodgkin Lymphoma	0.774	0.75	0.73	0.691
Oral	0.822	0.687	0.792	0.632
Ovary	0.752	0.599	0.663	0.46
Pancreas	0.232	0.095	0.217	0.063
Prostate	0.961	0.981	0.89	0.971
Stomach	0.351	0.303	0.305	0.238
Testis	0.966	0.94	0.963	0.924
Thyroid	0.991	0.936	0.993	0.936
All Other Cancers	0.665	0.421	0.626	0.373



Age-Standardized Cancer Incidence and Mortality Rates in BC Young Adults (Age 20-44) and BC Adults (Age 45-69) by Gender and Year





BC Cancer Agency

CARE & RESEARCH

An agency of the Provincial Health Services Authority

BC Cancer Agency's Mission

- to reduce the incidence of cancer;
- to reduce the mortality rate of people with cancer;
- to improve the quality of life of people living with cancer.

BC Cancer Agency

600 West 10th Avenue

Vancouver, BC

Canada V5Z 4E6

(p) 604-877-6000

(f) 604-877-6278

BC Cancer Foundation

200-601 West Broadway

Vancouver, BC

Canada V5Z 4C2

(p) 604-877-6040

(f) 604-877-6161

BC Cancer Research Centre

2-111, 675 West 10th Avenue

Vancouver, BC

Canada V5Z 1L3

(p) 604-675-8051

(f) 604-675-8180

BC Cancer Agency – Centre for the Southern Interior

399 Royal Avenue

Kelowna, BC

Canada V1Y 5L3

(p) 250-712-3900

(f) 250-712-3911

BC Cancer Agency – Fraser Valley Centre

13750-96th Avenue

Surrey, BC

Canada V3V 1Z2

(p) 604-930-2098

(f) 604-930-4049

BC Cancer Agency – Vancouver Centre

600 West 10th Avenue

Vancouver, BC

Canada V5Z 4E6

(p) 604-877-6000

(f) 604-877-6278

BC Cancer Agency – Vancouver Island Centre

2140 Lee Avenue

Victoria, BC

Canada V8R 6V5

(p) 250-519-5500

(f) 250-519-2010

BC Cancer Agency – Website

www.bccancer.bc.ca