

**Primary Care Practitioners**  
(Family Practice)

**Indigenous Cancer Care**

**Supportive Care**

(Counselling, Psychiatry, Nutrition, Speech Language Pathology, Physiotherapy, Pain & Symptom Management/Palliative Care)

This figure represents a general pathway of care that most people with cancer will experience. It shows

- The major phases of a cancer journey
- How a person might progress through each phase
- Key supportive services that are available throughout each person's cancer journey

Please visit the [Clinical Pathways Web](#) page for

- Tumour Group Clinical Pathways
- Patient Companion Guide
- Methodology Reports

## Target Population

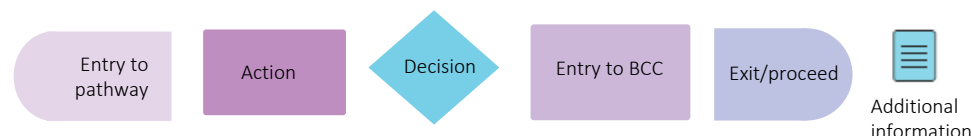
The target population for this pathway include health care providers such as primary care practitioners, oncologists, specialists, nurses, and other members of a health care team including allied health providers. Healthcare administrators across BC Cancer and the health authorities may also benefit from this resource for systems and operational planning.

## Pathway Disclaimer

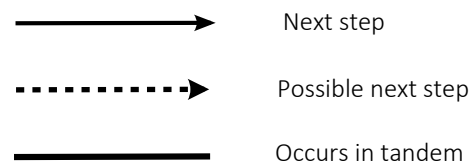
This pathway is an informational resource, intended to provide a high-level overview of the treatment journey a patient in British Columbia may receive. This pathway is not a substitute for medical advice and clinical judgment is still required as not all care trajectories will follow the proposed steps outlined in the pathway. This resource may not reflect all available evidence as research continues to evolve rapidly and BC Cancer is not responsible for any incomplete information. Furthermore, BC Cancer and those involved in developing this pathway are not liable for any incidental or consequential outcomes related to the information in this pathway. Anyone using the information provided in this pathway does so at their own risk.

## Pathway Map Legend

### Shape Guide



### Line Guide



## Pathway Map Considerations

This pathway is intended as a high-level resource and therefore does not include specific recommendations on specific systemic therapy protocols or radiation therapy doses. Instead, additional information can be sought via the inserted hyperlinks to resources that may aid a clinician in their treatment planning. The level of detail for each pathway was guided by the tumor group lead and intentionally kept high-level and represents the overall ideal pathway of care for a patient in general. Each patient will have individual needs and each cancer centre may have variation in the way care is delivered, but overall the intent was to represent the pathway that the majority of patients will follow.

## General Resources

**Indigenous Patient Navigator Referral Form**(1): <http://www.phsa.ca/aboriginal-health-site/Documents/IPN%20Fillable%20Referral%20Form.pdf>  
**Supportive Care**(2): <http://www.bccancer.bc.ca/our-services/services/supportive-care>  
**Compassionate Access Program (CAP)** (3): <https://cap.phsa.ca/>  
**Breast Chemotherapy Protocols**(4): <http://www.bccancer.bc.ca/health-professionals/clinical-resources/chemotherapy-protocols/breast>  
**Manufacturer Patient Assistance Programs**(5): <http://www.bccancer.bc.ca/systemic-therapy-site/Documents/Policy%20and%20Forms/Patient%20assistance%20programs.pdf>  
**BC Cancer Research Clinical Trials**(6): <https://www.bccrc.ca/dept/cid/clinical-trials>  
**Smoking Cessation Program**(7): <http://www.bccancer.bc.ca/health-professionals/clinical-resources/smoking-cessation-program>  
**Alcohol Reduction**(8): <http://www.bccancer.bc.ca/prevent/alcohol/reduce-your-risk>  
**MDC Referral Form**(9): <http://www.bccancer.bc.ca/books/Documents/Clinical%20Care%20Pathways/Patient%20Conference%20Order.pdf>  
**Pharmacy Contact Info**(10): <http://www.bccancer.bc.ca/health-professionals/clinical-resources/pharmacy#Contact--info>  
**Language & Translation Services**(46): <http://www.phsa.ca/health-professionals/professional-resources/language-services/translation>

## Abbreviations

**ADH:** Atypical Ductal Hyperplasia  
**ALH:** Atypical Lobular Hyperplasia  
**CDK:** Cyclin-Dependent Kinase  
**ER:** Estrogen Receptor  
**HER:** Human Epidermal Growth Factor Receptor  
**IO:** Immuno-Oncology  
**LCIS:** Lobular Carcinoma In Situ  
**RT:** Radiation Therapy  
**ST:** Systemic Therapy  
**MBC:** Metastatic Breast Cancer  
**MDC:** Multidisciplinary Conference/Discussion  
**MRP:** Most Responsible Provider

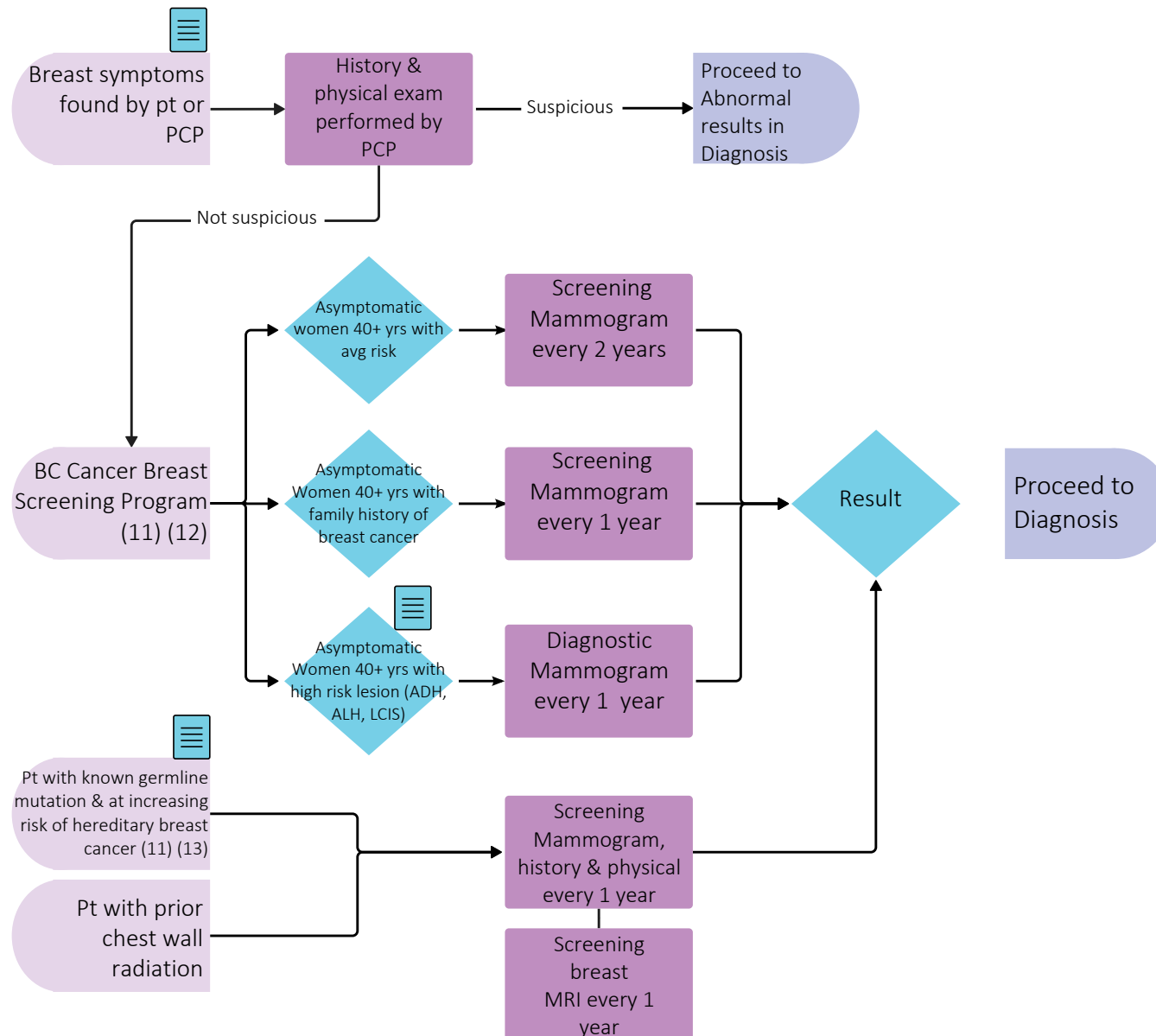
**PCP:** Primary Care Provider  
**PDL:** Programmed Cell Death Ligand  
**PFC:** Patient & Family Counseling  
**PR:** Progesterone Receptor  
**PSMPC:** Pain & Symptom Management & Palliative Care  
**TNBC:** Triple Negative Breast Cancer

## Additional Information

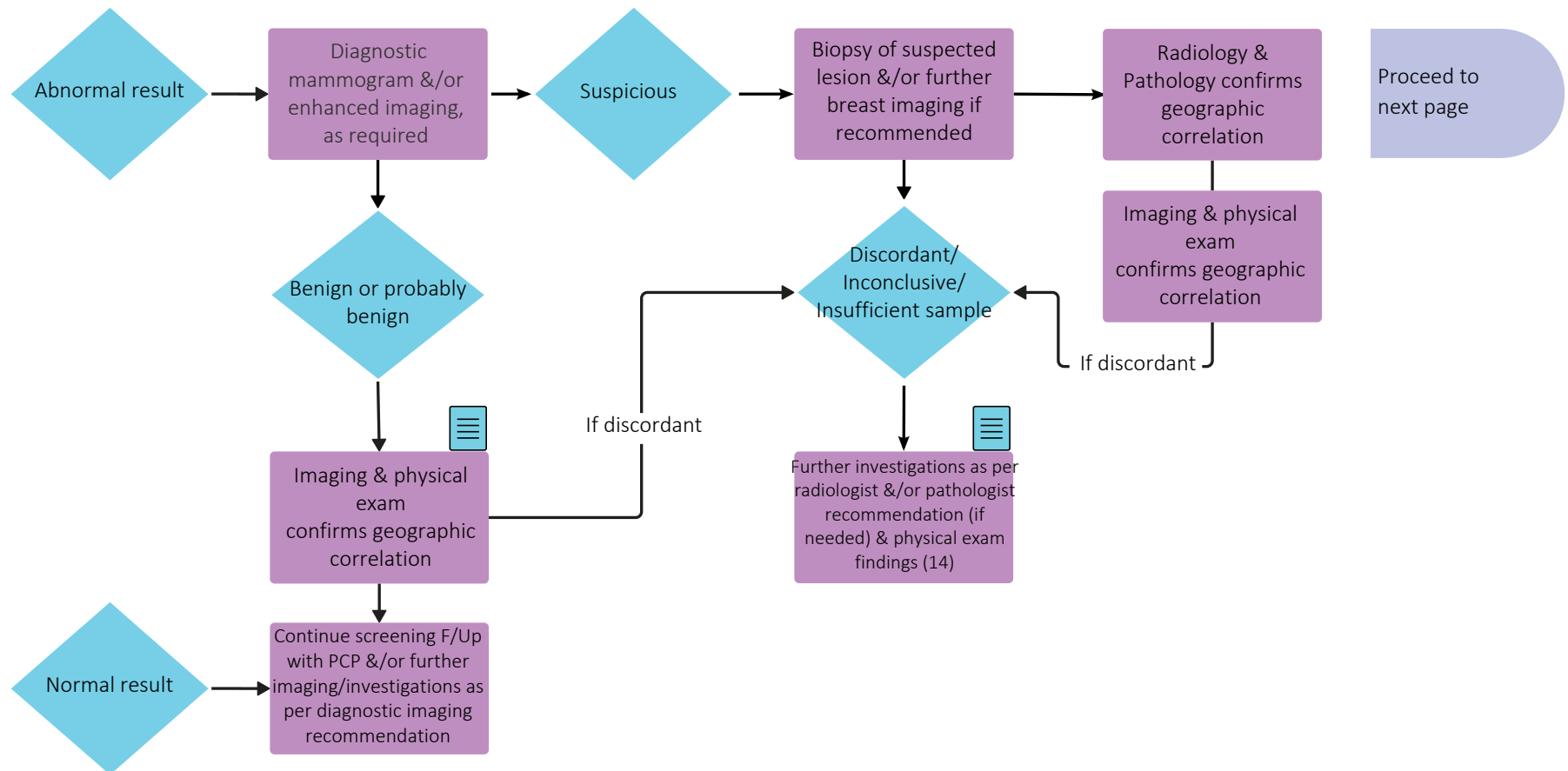
To learn more about how the Clinical Care Pathways are developed, visit the [Methodology Report](#).

Other Tumour Group Clinical Care Pathways can be found on the [BC Cancer Website](#).

## Pre-Diagnosis



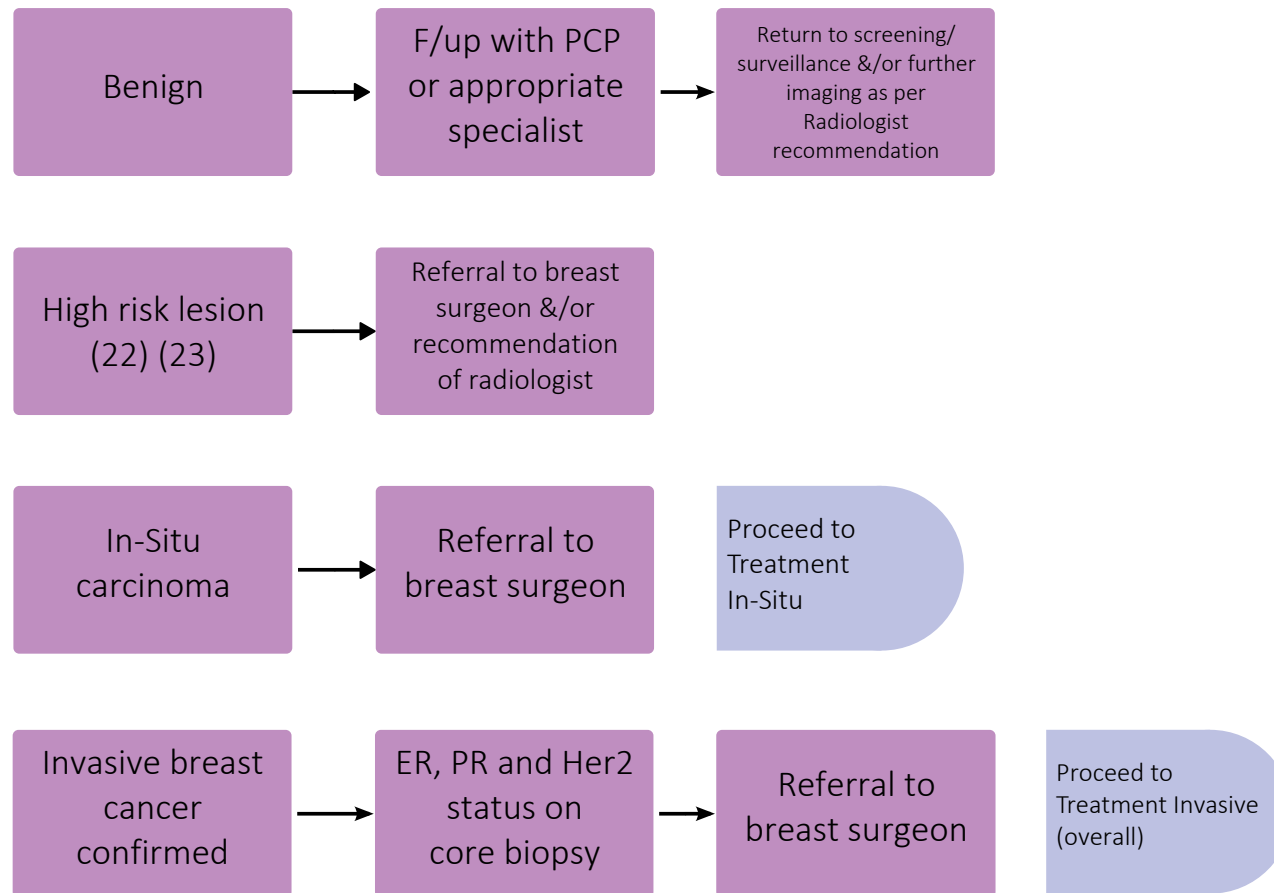
## Diagnosis (pg. 1)



Throughout treatment, consider...

Regular symptom & performance status assessment (15); Supportive care (2, 16); Sexual & reproductive health (17, 18, 19); Co-morbidity management & medication review; Risk factor mitigation; Clinical trials (where applicable) (6); Goals of care (20); Cultural safety (1); Involvement of PCP, Consider eligibility for genetic testing based on tumor characteristics, family history and ancestry (21)

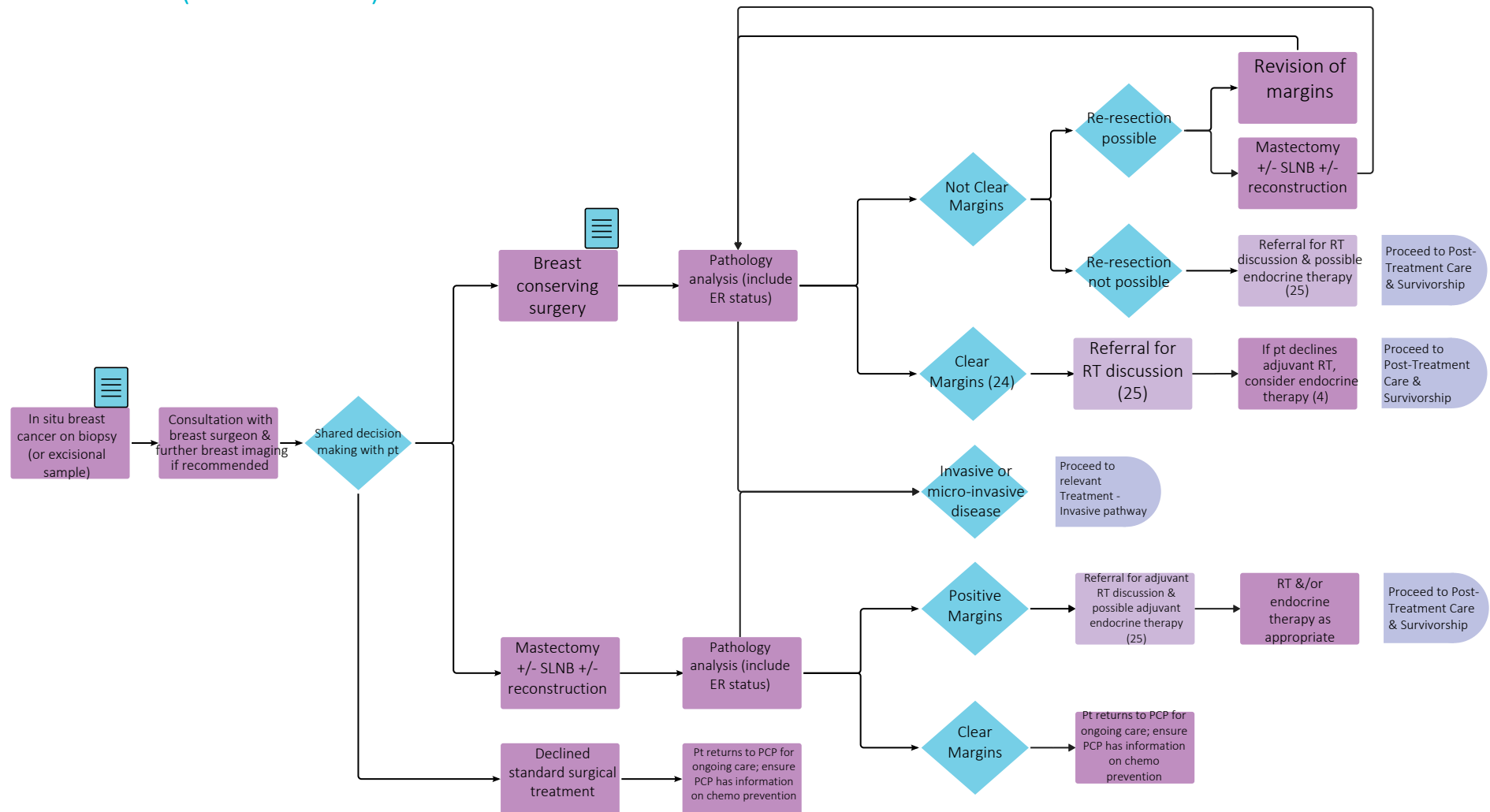
## Diagnosis (pg. 2)



Throughout treatment, consider...

Regular symptom & performance status assessment (15); Supportive care (2, 16); Sexual & reproductive health (17, 18, 19); Co-morbidity management & medication review; Risk factor mitigation; Clinical trials (where applicable) (6); Goals of care (20); Cultural safety (1); Involvement of PCP, Consider eligibility for genetic testing based on tumor characteristics, family history and ancestry (21)

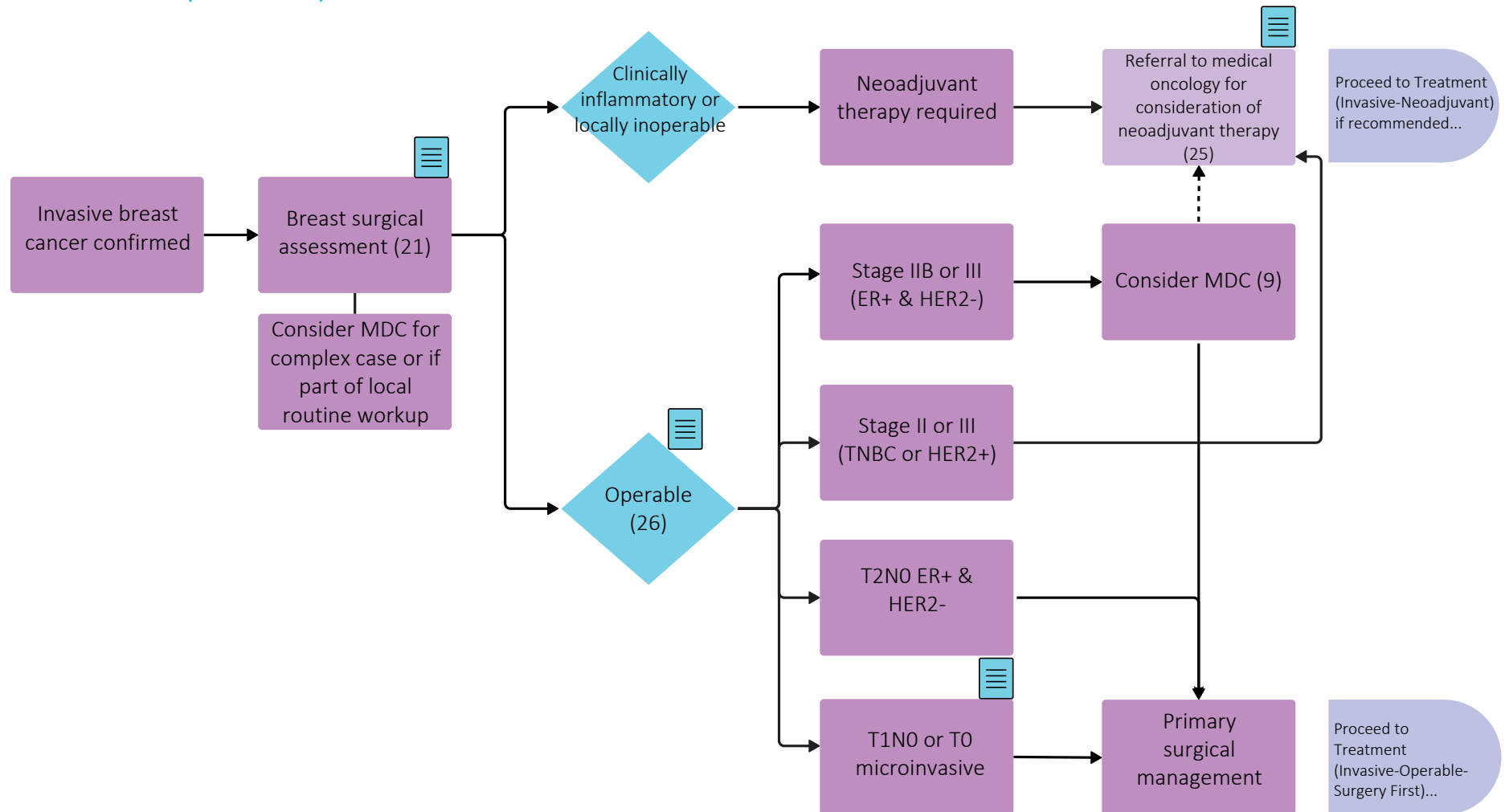
## Treatment (In situ: DCIS)



Throughout treatment, consider...

Regular symptom & performance status assessment (15); Supportive care (2, 16); Sexual & reproductive health (17, 18, 19); Co-morbidity management & medication review; Risk factor mitigation; Clinical trials (where applicable) (6); Goals of care (20); Cultural safety (1); Involvement of PCP, Consider eligibility for genetic testing based on tumor characteristics, family history and ancestry (21)

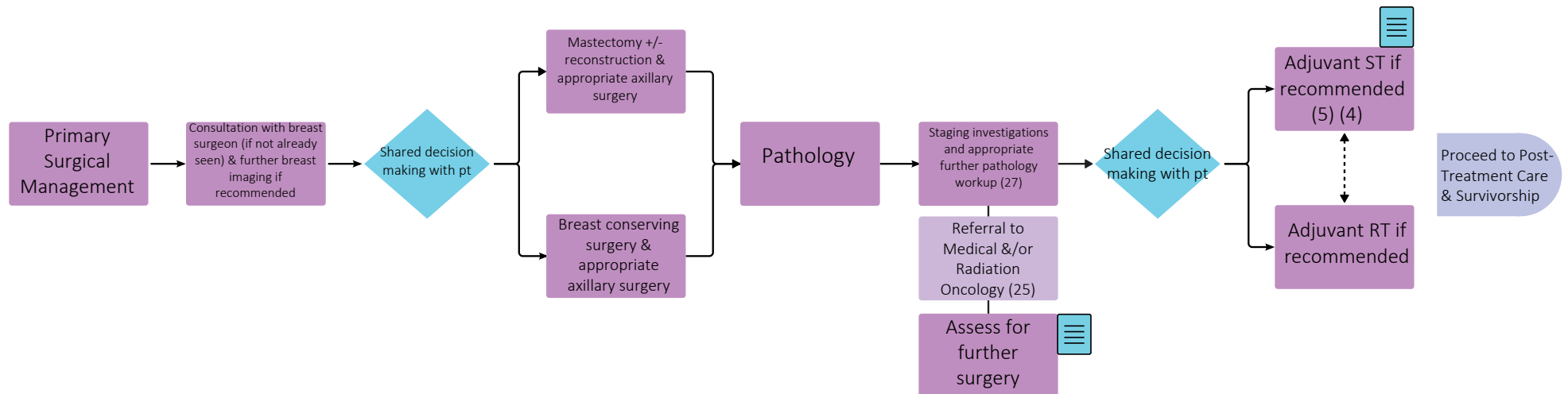
## Treatment (Invasive) Overall



Throughout treatment, consider...

Regular symptom & performance status assessment (15); Supportive care (2, 16); Sexual & reproductive health (17, 18, 19); Co-morbidity management & medication review; Risk factor mitigation; Clinical trials (where applicable) (6); Goals of care (20); Cultural safety (1); Involvement of PCP, Consider eligibility for genetic testing based on tumor characteristics, family history and ancestry (21)

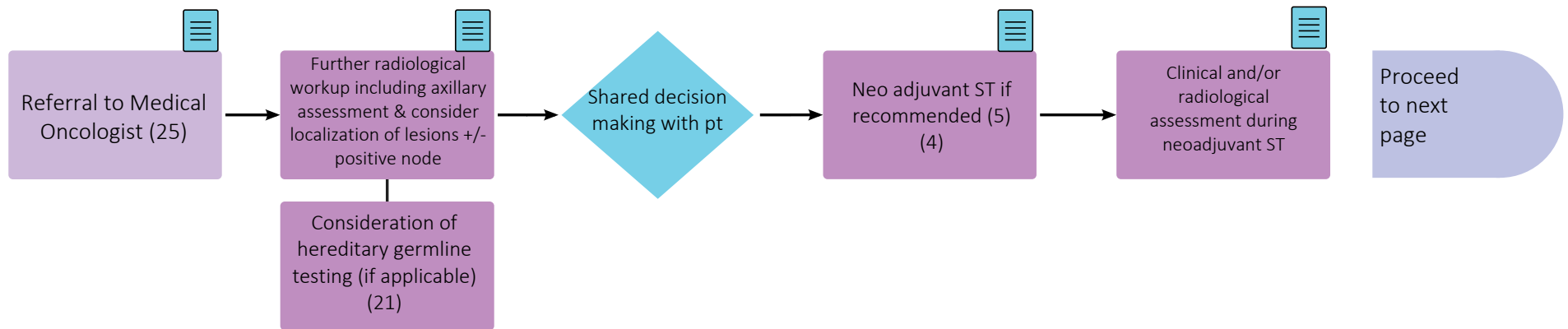
## Treatment (Invasive-Operable-Upfront Surgery)



Throughout treatment, consider...

Regular symptom & performance status assessment (15); Supportive care (2, 16); Sexual & reproductive health (17, 18, 19); Co-morbidity management & medication review; Risk factor mitigation; Clinical trials (where applicable) (6); Goals of care (20); Cultural safety (1); Involvement of PCP, Consider eligibility for genetic testing based on tumor characteristics, family history and ancestry (21)

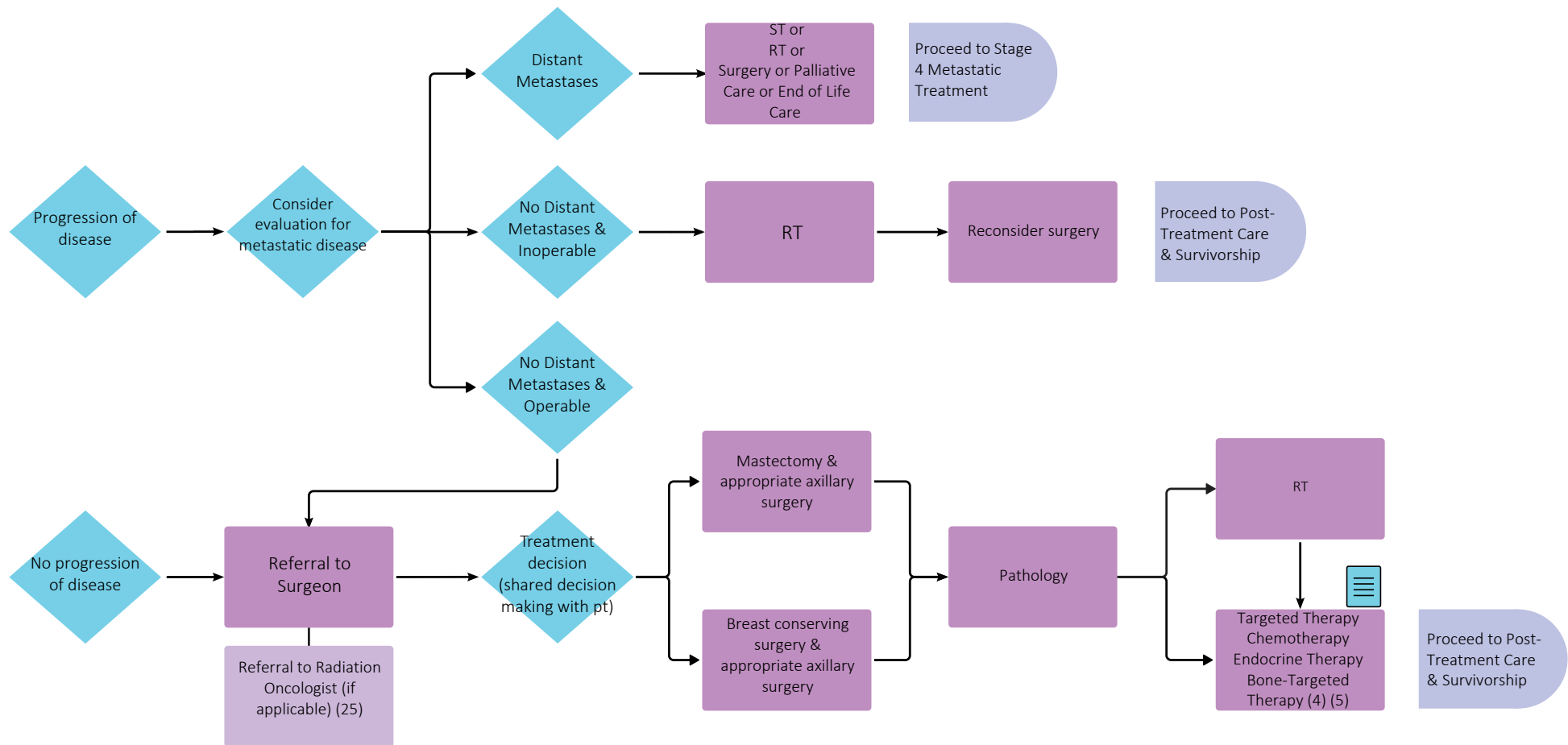
## Treatment (Neoadjuvant Systemic Treatment) (Pg. 1)



Throughout treatment, consider...

Regular symptom & performance status assessment (15); Supportive care (2, 16); Sexual & reproductive health (17, 18, 19); Co-morbidity management & medication review; Risk factor mitigation; Clinical trials (where applicable) (6); Goals of care (20); Cultural safety (1); Involvement of PCP, Consider eligibility for genetic testing based on tumor characteristics, family history and ancestry (21)

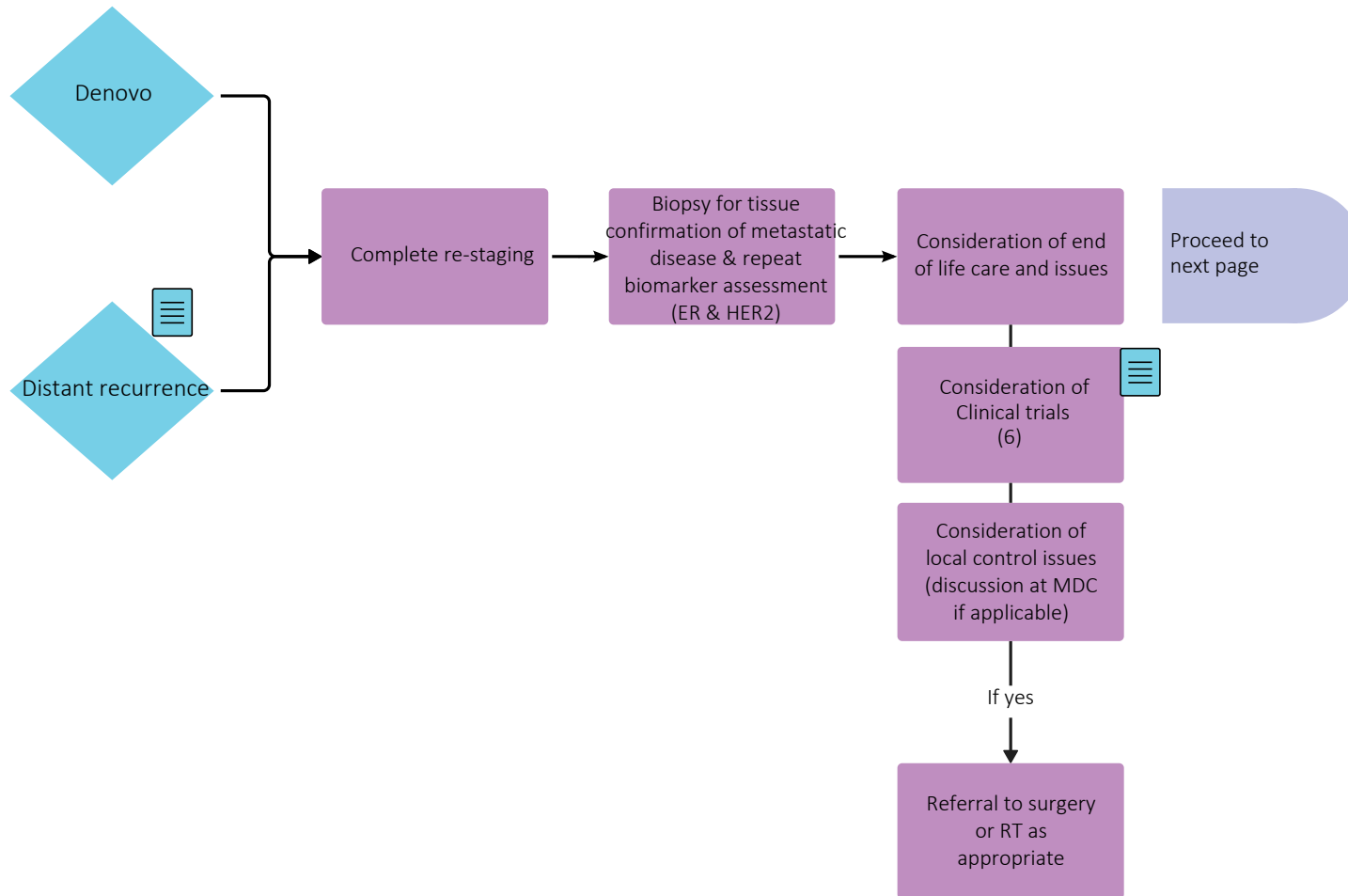
## Treatment (Neoadjuvant Systemic Treatment) (Pg. 2)



Throughout treatment, consider...

Regular symptom & performance status assessment (15); Supportive care (2, 16); Sexual & reproductive health (17, 18, 19); Co-morbidity management & medication review; Risk factor mitigation; Clinical trials (where applicable) (6); Goals of care (20); Cultural safety (1); Involvement of PCP, Consider eligibility for genetic testing based on tumor characteristics, family history and ancestry (21)

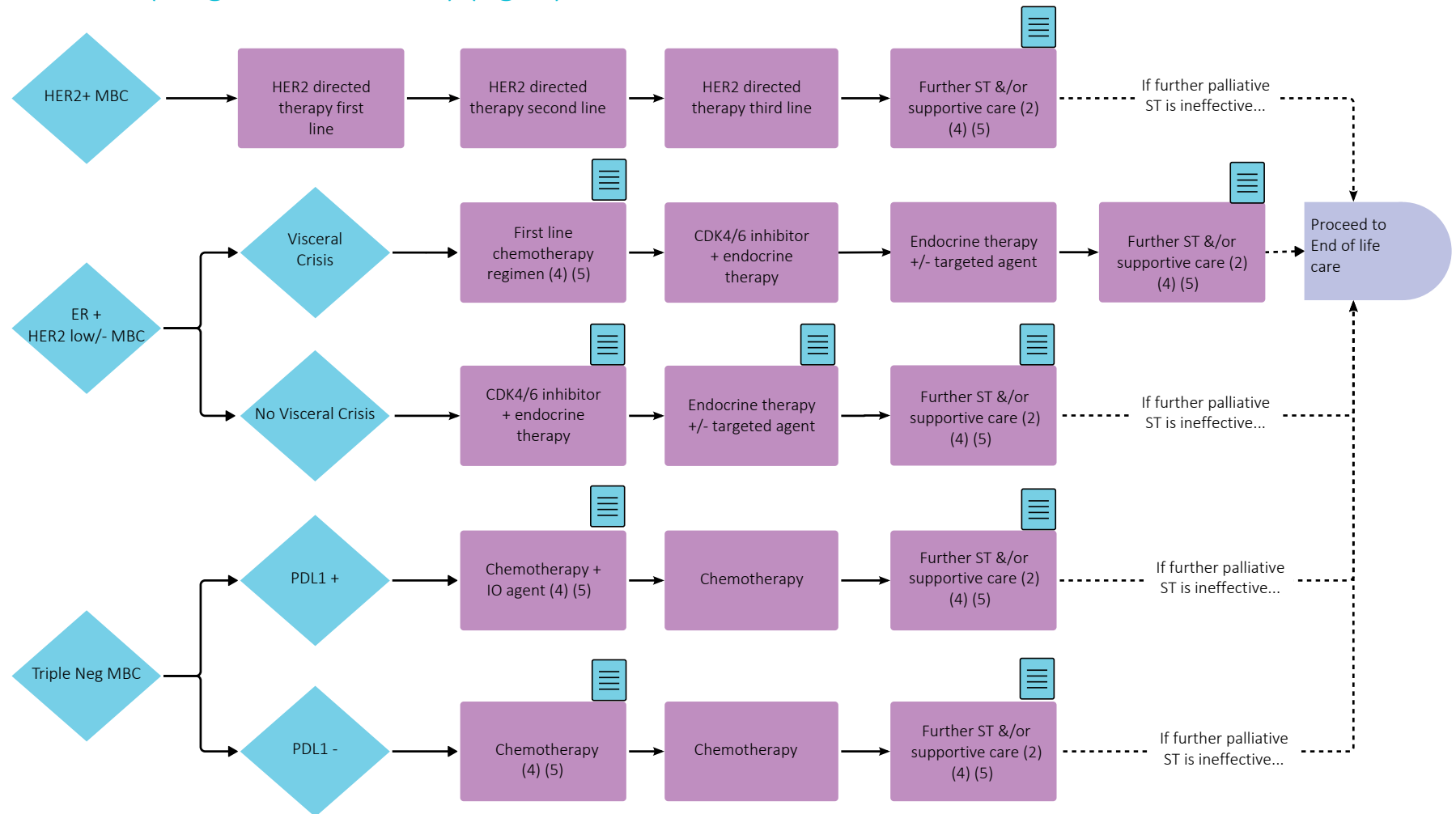
## Treatment (Stage 4 Metastatic) (Pg. 1)



Throughout treatment, consider...

Regular symptom & performance status assessment (15); Supportive care (2, 16); Sexual & reproductive health (17, 18, 19); Co-morbidity management & medication review; Risk factor mitigation; Clinical trials (where applicable) (6); Goals of care (20); Cultural safety (1); Involvement of PCP, Consider eligibility for genetic testing based on tumor characteristics, family history and ancestry (21)

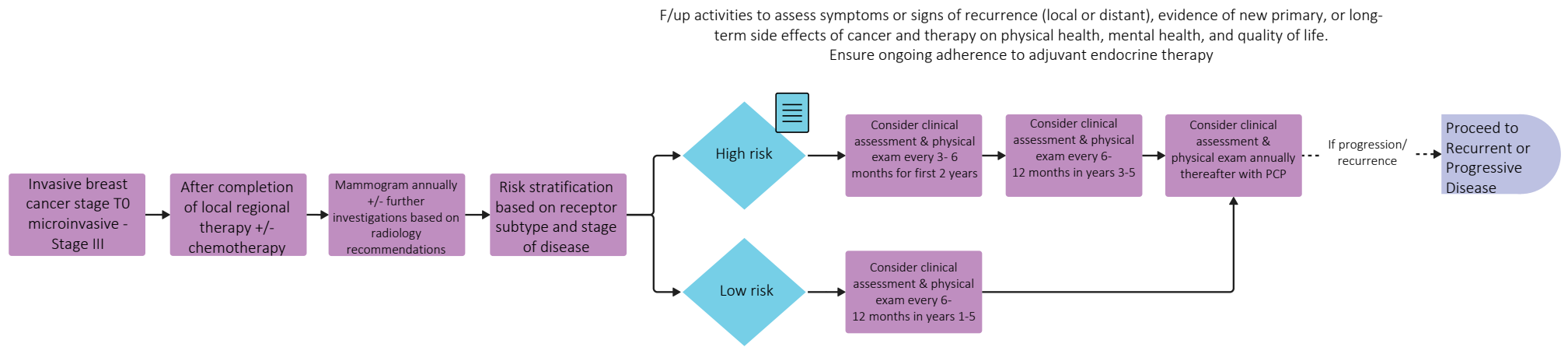
## Treatment (Stage 4 Metastatic) (Pg. 2)



Throughout treatment, consider...

Regular symptom & performance status assessment (15); Supportive care (2, 16); Sexual & reproductive health (17, 18, 19); Co-morbidity management & medication review; Risk factor mitigation; Clinical trials (where applicable) (6); Goals of care (20); Cultural safety (1); Involvement of PCP, Consider eligibility for genetic testing based on tumor characteristics, family history and ancestry (21)

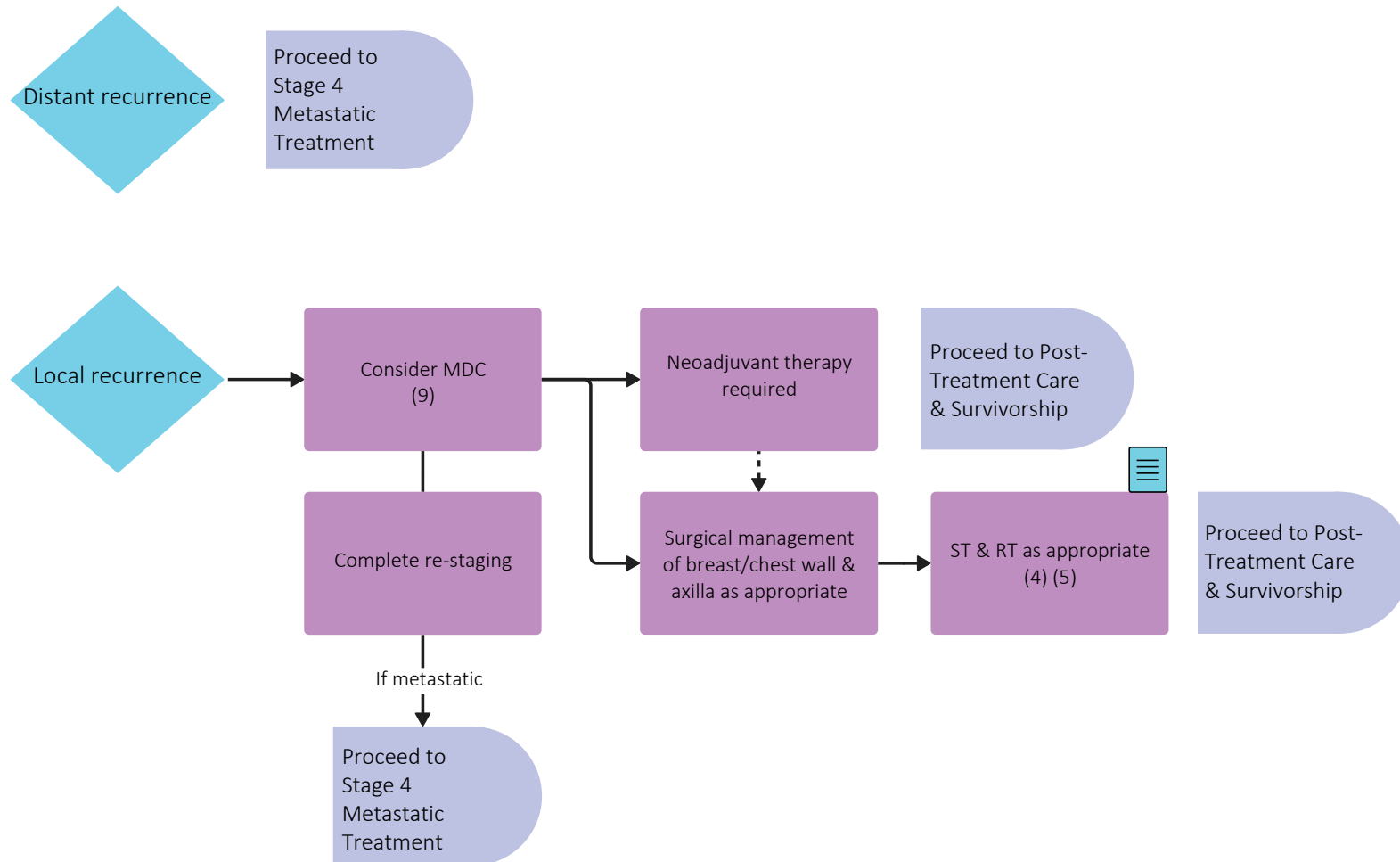
## Post Treatment Care & Survivorship



Throughout treatment, consider...

Regular symptom & performance status assessment (15); Supportive care (2, 16); Sexual & reproductive health (17, 18, 19); Co-morbidity management & medication review; Risk factor mitigation; Clinical trials (where applicable) (6); Goals of care (20); Cultural safety (1); Involvement of PCP, Consider eligibility for genetic testing based on tumor characteristics, family history and ancestry (21)

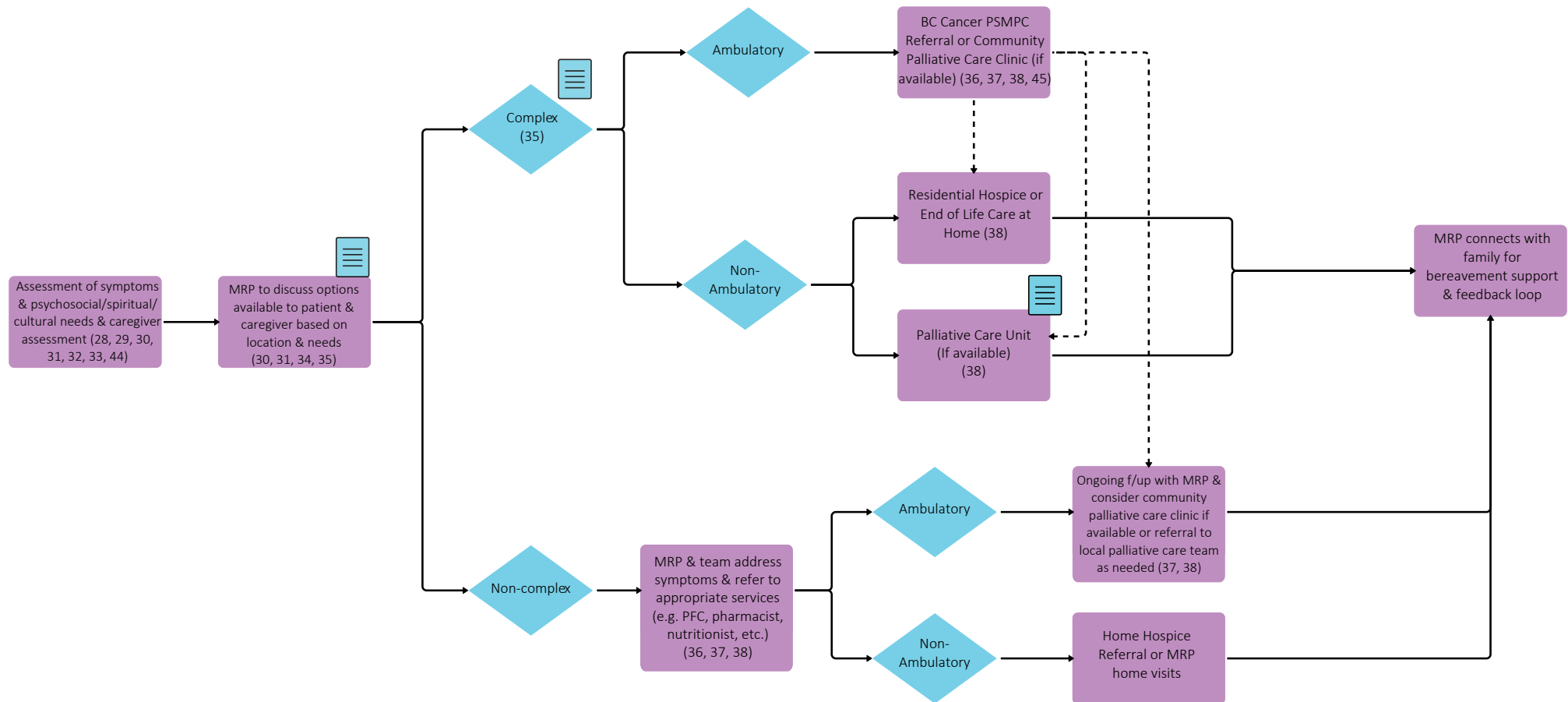
## Recurrent or Progressive Disease



Throughout treatment, consider...

Regular symptom & performance status assessment (15); Supportive care (2, 16); Sexual & reproductive health (17, 18, 19); Co-morbidity management & medication review; Risk factor mitigation; Clinical trials (where applicable) (6); Goals of care (20); Cultural safety (1); Involvement of PCP, Consider eligibility for genetic testing based on tumor characteristics, family history and ancestry (21)

## End of Life Care



Throughout treatment, consider...

Goals of Care Discussions & Consideration of Cultural Safety (1, 34, 35, 39, 40, 41, 42, 43)

## Subject Matter Expert Working Group & COIs

**Stephen Chia**, Project Lead, Medical Oncologist  
COI Pending

**Anise Barton**, Surgeon  
No disclosures

**Thao Nguyen**, Medical Oncologist  
AstraZeneca, Merck, Pfizer, Novartis, Michael Smith  
Foundation For Clinical Research and Crystal Gala  
Foundation

**Tanya Berrang**, Radiation Oncologist  
No disclosures

**Brenda Farnquist**, Radiologist  
COI Pending

**Zuzana Kos**, Pathologist  
AstraZeneca, Daiichi Sankyo, Eli Lilly

**Elaine McKevitt**, Surgeon  
Canadian Breast Cancer Conference, Roche Canada, CIHR

**Tamara Shenkier**, Medical Oncologist  
AZ, Novartis, Pfizer, Roche, CCTG, Gilead

**Charlotte Yong-Hing**, Radiologist  
BC Radiological Society

**Jack Zhang**, Radiation Oncologist  
COI Pending

## Pathway Program Team

**Bhatia Yashpal**, Tumour Group Coordinator, Provincial Programs  
**Currie Tammy**, Executive Director, Provincial Programs  
**Ladak Amilya**, Policy Analyst, Tumour Groups  
**Loudon James**, Director, Provincial Programs  
**Nanji Shaifa**, Manager, Tumour Groups  
**Simmons Christine**, Tumour Group Council Chair  
**Wai Elaine**, Senior Executive Director, Medical Affairs and Quality

## Other Stakeholders

Family Practice & GPO  
Indigenous Cancer Control  
Nursing Community of Practice (NCoP)  
Patient and Family Experience Team & Supportive Care  
Radiation Therapists  
Surgical Oncology Network  
Provincial Pharmacy, Pathology & Medical Imaging Teams

## Appendix

1. <http://www.phsa.ca/aboriginal-health-site/Documents/IPN%20Fillable%20Referral%20Form.pdf>
2. <http://www.bccancer.bc.ca/our-services/services/supportive-care>
3. <https://cap.phsa.ca/>
4. <http://www.bccancer.bc.ca/health-professionals/clinical-resources/chemotherapy-protocols/breast>
5. <http://www.bccancer.bc.ca/systemic-therapy-site/Documents/Policy%20and%20Forms/Patient%20assistance%20programs.pdf>
6. <https://www.bccrc.ca/dept/cid/clinical-trials>
7. <http://www.bccancer.bc.ca/health-professionals/clinical-resources/smoking-cessation-program>
8. <http://www.bccancer.bc.ca/prevent/alcohol/reduce-your-risk>
9. <http://www.bccancer.bc.ca/books/Documents/Clinical%20Care%20Pathways/Patient%20Conference%20Order.pdf>
10. <http://www.bccancer.bc.ca/health-professionals/clinical-resources/pharmacy#Contact--info>
11. <http://www.bccancer.bc.ca/screening/breast>
12. <http://www.bccancer.bc.ca/screening/Documents/Screening-Guidelines.pdf>
13. <http://www.bccancer.bc.ca/health-professionals/clinical-resources/hereditary-cancer/high-risk-clinic>
14. [https://www.nccn.org/professionals/physician\\_gls/pdf/breast-screening.pdf](https://www.nccn.org/professionals/physician_gls/pdf/breast-screening.pdf)
15. <https://www.uptodate.com/contents/image?imageKey=HEME%2F72901>
16. <http://www.bccancer.bc.ca/our-services/services/support-programs>
17. <https://www.olivefertility.com/referring-physicians>
18. <https://www.pacificfertility.ca/physician-resources>
19. <http://www.bccancer.bc.ca/health-info/coping-with-cancer/managing-symptoms-side-effects/sexual-health>
20. <http://www.bccancer.bc.ca/new-patients-site/Documents/ACP-goals-of-care-orders.pdf>
21. <http://www.bccancer.bc.ca/health-professionals/clinical-resources/hereditary-cancer>
22. <https://www.breastsurgeons.org/docs/statements/Consensus-Guideline-on-Concordance-Assessment-of-Image-Guided-Breast-Biopsies.pdf?v2>
23. <https://bcmj.org/articles/current-evaluation-breast-health-concerns-and-diagnosis-breast-cancer>
24. <https://link.springer.com/article/10.1245/s10434-016-5449-z>
25. <http://www.bccancer.bc.ca/health-professionals-site/Documents/Patient-Referral-Form.pdf>
26. <http://www.bccancer.bc.ca/health-professionals/networks/surgery-network>
27. <https://www.cancercareontario.ca/en/guidelines-advice/types-of-cancer/1096>
28. <http://www.bccancer.bc.ca/our-services/centres-clinics/bc-cancer-vancouver/epicc>
29. [https://www2.gov.bc.ca/assets/gov/health/practitioner-pro/bc-guidelines/palliative1\\_appendix\\_a.pdf](https://www2.gov.bc.ca/assets/gov/health/practitioner-pro/bc-guidelines/palliative1_appendix_a.pdf)
30. <https://www.bc-cpc.ca/publications/symptom-management-guidelines/>
31. <https://www2.gov.bc.ca/gov/content/health/practitioner-professional-resources/bc-guidelines/palliative-care>
32. <https://www2.gov.bc.ca/gov/content/health/practitioner-professional-resources/pharmacare/prescribers/plan-p-bc-palliative-care-benefits-program>
33. <http://www.bccancer.bc.ca/our-services/services/indigenous-cancer-control>
34. <http://www.bccancer.bc.ca/new-patients-site/Documents/SeriousIllnessConversationGuideCard.pdf>
35. <http://www.phsa.ca/health-info/medical-assistance-in-dying>
36. <http://www.bccancer.bc.ca/managing-symptoms-site/Documents/PSMPC-Referral-Form-for-All-BC-Cancer-Centres.pdf>
37. <http://www.bccancer.bc.ca/our-services/services/supportive-care/pain-symptom-management#What--we--do>
38. [https://vancouver.pathwaysbc.ca/service\\_categories/24](https://vancouver.pathwaysbc.ca/service_categories/24)
39. <http://www.bccancer.bc.ca/new-patients-site/Documents/Goals%20of%20Care%20Orders%20Form%20June%202018%20Final.pdf>
40. <https://www2.gov.bc.ca/assets/gov/people/seniors/health-safety/pdf/myvoice-advancecareplanningguide.pdf>
41. <https://www2.gov.bc.ca/gov/content/family-social-supports/seniors/health-safety/advance-care-planning>
42. <http://www.bccancer.bc.ca/managing-symptoms-site/Documents/When-Life-Nearing-its-End.pdf>
43. <http://www.bccancer.bc.ca/new-patients-site/Documents/ACP-tips-for-oncology-professionals.pdf>
44. <http://www.bccancer.bc.ca/books/Documents/Clinical%20Care%20Pathways/Revised%20PSMPC%20Questionnaire%20Pink%20Form%202020-21.pdf>
45. [http://www.bccancer.bc.ca/new-patients-site/Documents/MIPPC\\_Referral\\_Form.pdf](http://www.bccancer.bc.ca/new-patients-site/Documents/MIPPC_Referral_Form.pdf)
46. <http://www.phsa.ca/health-professionals/professional-resources/language-services/translation>