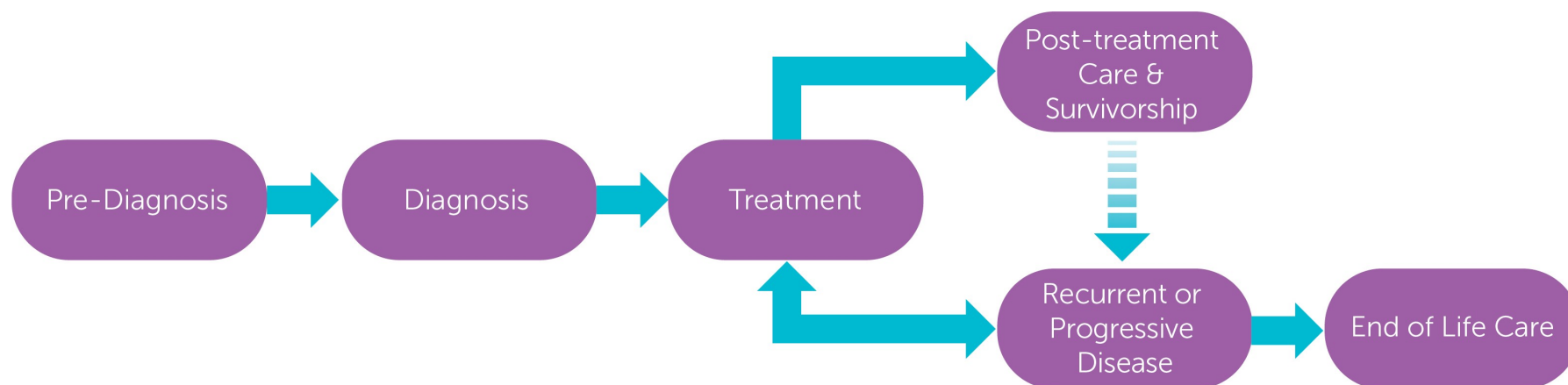


# GI Tumour Group - Esophageal/GEJ Pathway

## Overarching Pathway



**Primary Care Practitioners**  
(Family Practice)

**Indigenous Cancer Care**

**Supportive Care**

(Counselling, Psychiatry, Nutrition, Speech Language Pathology, Physiotherapy, Pain & Symptom Management/Palliative Care)

This figure represents a general pathway of care that most people with cancer will experience. It shows

- The major phases of a cancer journey
- How a person might progress through each phase
- Key supportive services that are available throughout each person's cancer journey

Please visit the [Clinical Pathways Web](#) page for

- Tumour Group Clinical Pathways
- Patient Companion Guide
- Methodology Reports

## Target Population

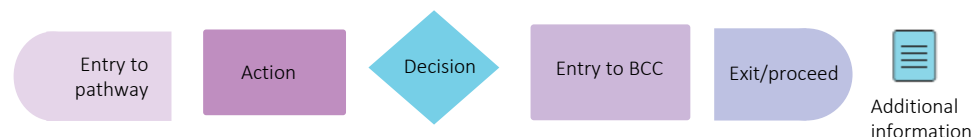
The target population for this pathway include health care providers such as primary care practitioners, oncologists, specialists, nurses, and other members of a health care team including allied health providers. Healthcare administrators across BC Cancer and the health authorities may also benefit from this resource for systems and operational planning.

## Pathway Disclaimer

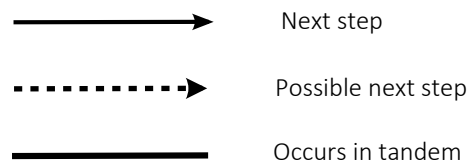
This pathway is an informational resource, intended to provide a high-level overview of the treatment journey a patient in British Columbia may receive. This pathway is not a substitute for medical advice and clinical judgment is still required as not all care trajectories will follow the proposed steps outlined in the pathway. This resource may not reflect all available evidence as research continues to evolve rapidly and BC Cancer is not responsible for any incomplete information. Furthermore, BC Cancer and those involved in developing this pathway are not liable for any incidental or consequential outcomes related to the information in this pathway. Anyone using the information provided in this pathway does so at their own risk.

## Pathway Map Legend

### Shape Guide



### Line Guide



## Pathway Map Considerations

This pathway is intended as a high-level resource and therefore does not include specific recommendations on specific systemic therapy protocols or radiation therapy doses. Instead, additional information can be sought via the inserted hyperlinks to resources that may aid a clinician in their treatment planning. The level of detail for each pathway was guided by the tumor group lead and intentionally kept high-level and represents the overall ideal pathway of care for a patient in general. Each patient will have individual needs and each cancer centre may have variation in the way care is delivered, but overall the intent was to represent the pathway that the majority of patients will follow.

## General Resources

**Indigenous Patient Navigator Referral Form** (1): <http://www.phsa.ca/aboriginal-health-site/Documents/IPN%20Fillable%20Referral%20Form.pdf>  
**Supportive Care** (2): <http://www.bccancer.bc.ca/our-services/services/supportive-care>  
**Compassionate Access Program (CAP)** (3): <https://cap.phsa.ca/>  
**Gastrointestinal Chemotherapy Protocols** (4): <http://www.bccancer.bc.ca/health-professionals/clinical-resources/chemotherapy-protocols/gastrointestinal#Esophagus>  
**Manufacturer Patient Assistance Programs** (5): <http://www.bccancer.bc.ca/systemic-therapy-site/Documents/Policy%20and%20Forms/Patient%20assistance%20programs.pdf>  
**BC Cancer Research Clinical Trials** (6): <https://www.bccrc.ca/dept/cid/clinical-trials>  
**Smoking Cessation Program** (7): <http://www.bccancer.bc.ca/health-professionals/clinical-resources/smoking-cessation-program>  
**Alcohol Reduction** (8): <http://www.bccancer.bc.ca/prevent/alcohol/reduce-your-risk>  
**MDC Referral Form** (9): <http://www.bccancer.bc.ca/books/Documents/Clinical%20Care%20Pathways/Patient%20Conference%20Order.pdf>  
**Pharmacy Contact Info** (10): <http://www.bccancer.bc.ca/health-professionals/clinical-resources/pharmacy#Contact--info>  
**Language & Translation Services** (40): <http://www.phsa.ca/health-professionals/professional-resources/language-services/translation>  
**BC Cancer Library** (41): <http://www.bccancer.bc.ca/our-services/services/library>

---

## Abbreviations

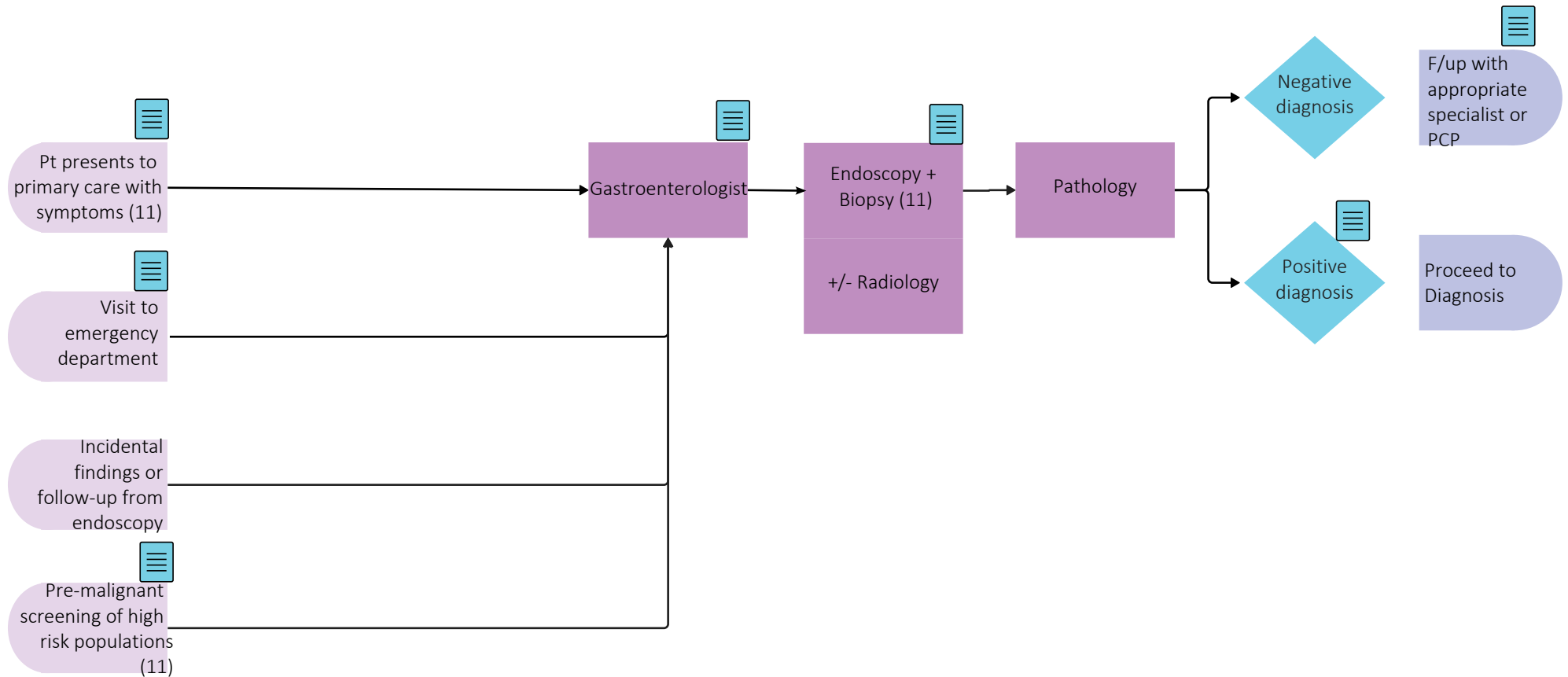
**EGD:** Esophagogastroduodenoscopy  
**ER:** Endoscopic Resection  
**EUS:** Endoscopic Ultrasound  
**GEJ:** Gastroesophageal Junction  
**MDC:** Multidisciplinary Conference/Discussion  
**MRP:** Most Responsible Provider  
**PCP:** Primary Care Provider  
**PFC:** Patient & Family Counseling  
**PSMPC:** Pain & Symptom Management & Palliative Care  
**RT:** Radiation Therapy  
**ST:** Systemic Therapy

## Additional Information

To learn more about how the Clinical Care Pathways are developed, visit the [Methodology Report](#).

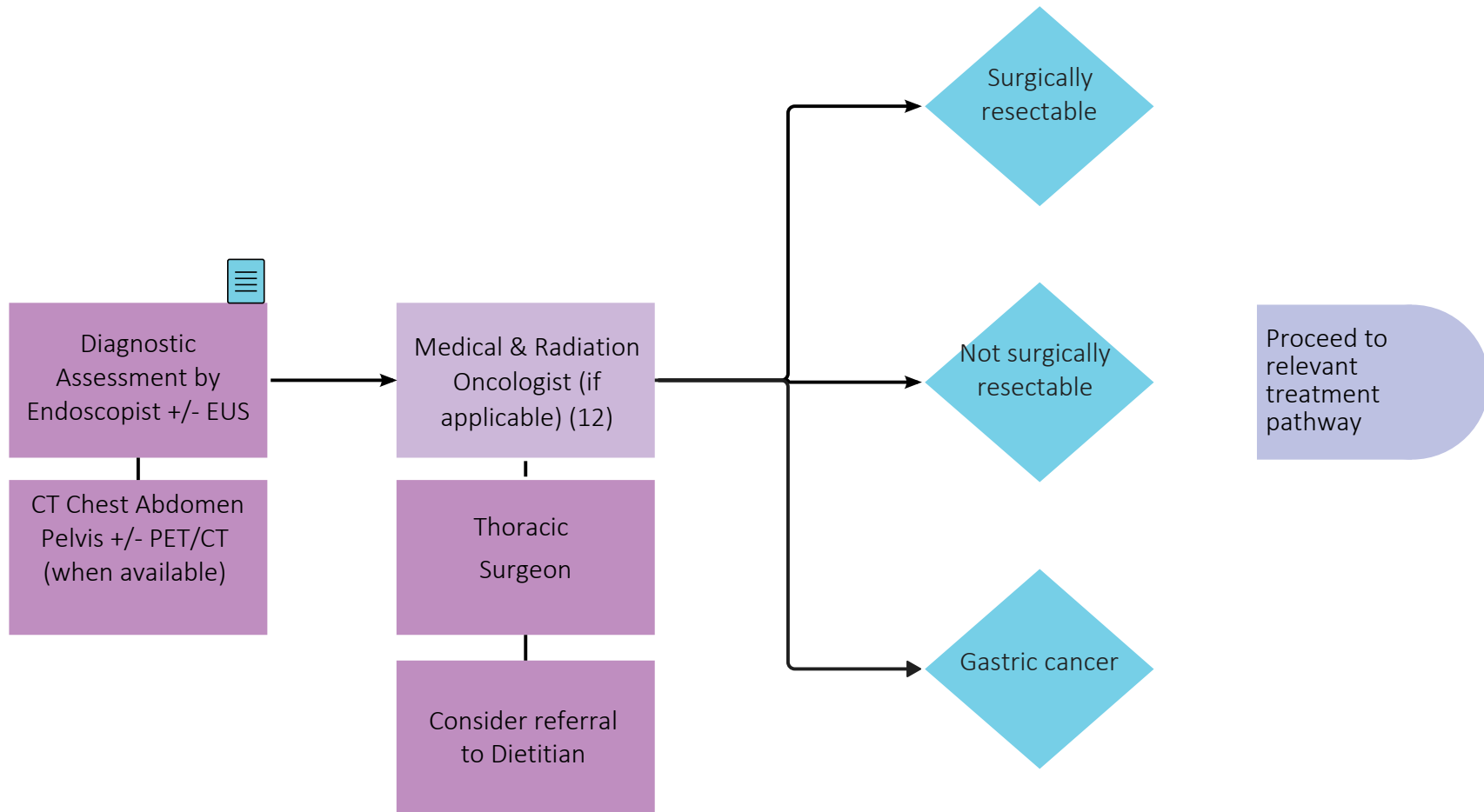
Other Tumour Group Clinical Care Pathways can be found on the [BC Cancer Website](#).

## Pre-Diagnosis





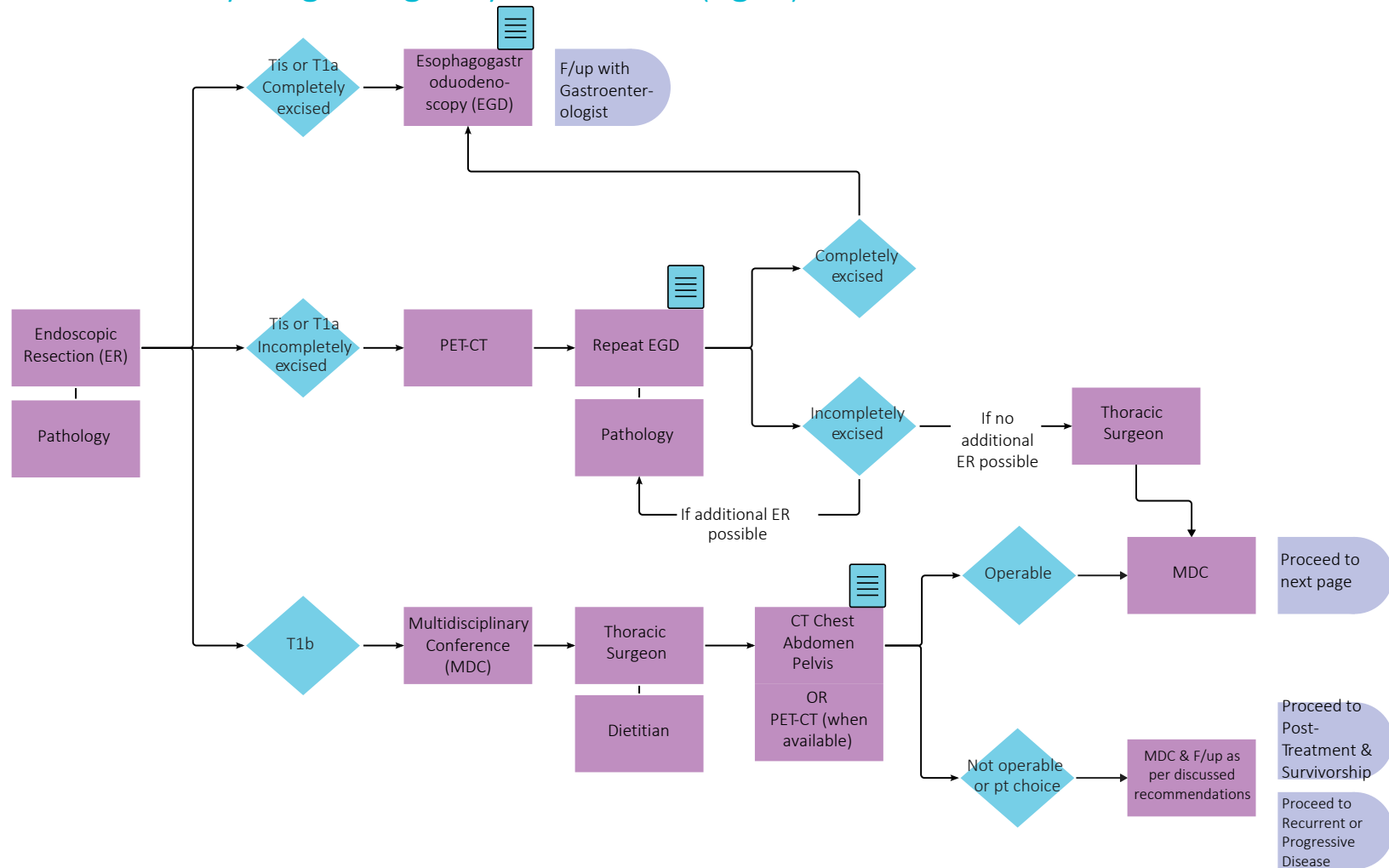
## Diagnosis



Throughout treatment, consider...

Regular symptom & performance status assessment (13); Supportive care (2, 14); Sexual & reproductive health (15, 16, 17); Co-morbidity management & medication review; Risk factor mitigation; Clinical trials (where applicable) (6); Goals of care (18); Cultural safety (1); Involvement of PCP

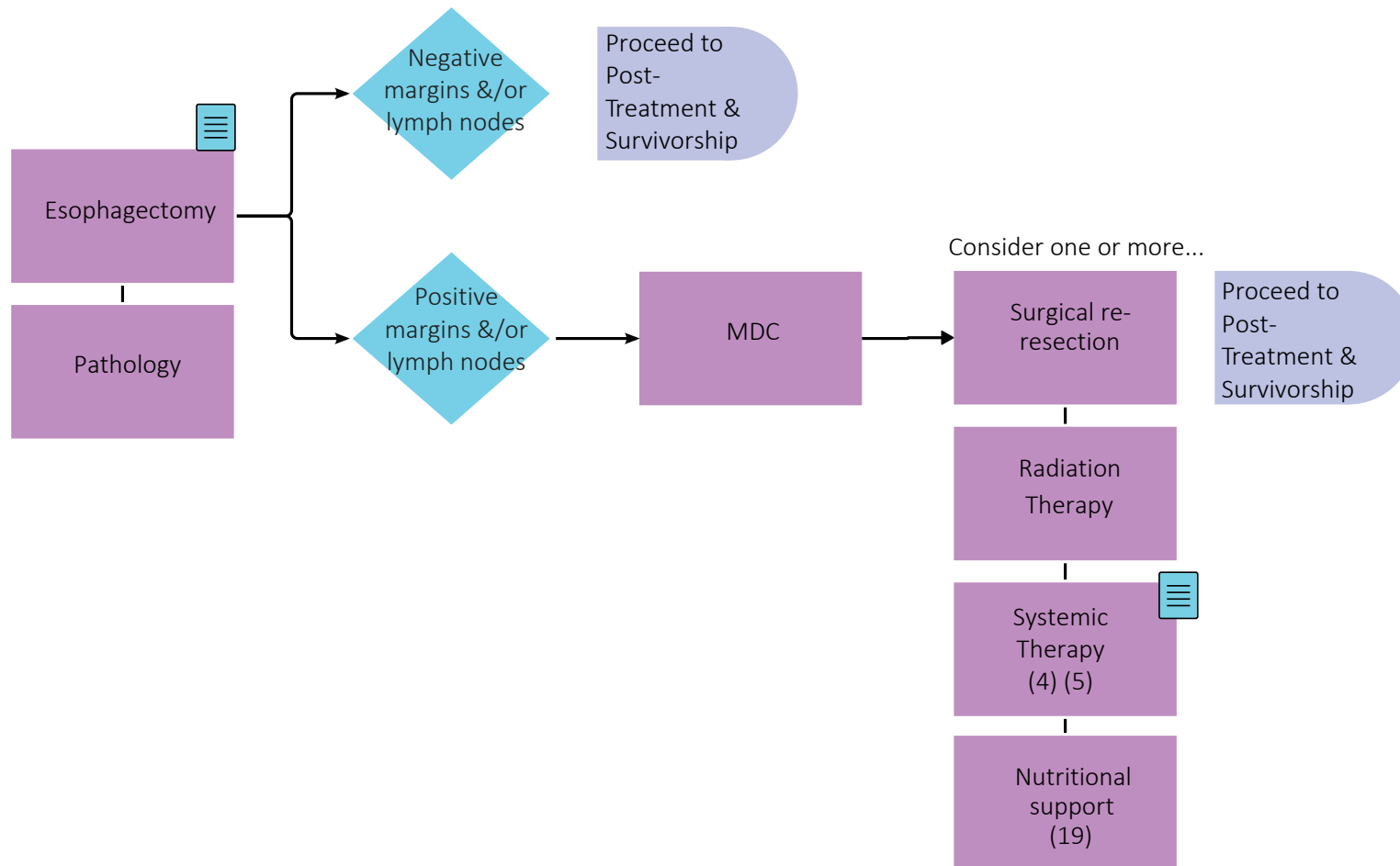
## Treatment - Early Stage Surgically Resectable (Pg. 1)



Throughout treatment, consider...

Regular symptom & performance status assessment (13); Supportive care (2, 14); Sexual & reproductive health (15, 16, 17); Co-morbidity management & medication review; Risk factor mitigation; Clinical trials (where applicable) (6); Goals of care (18); Cultural safety (1); Involvement of PCP

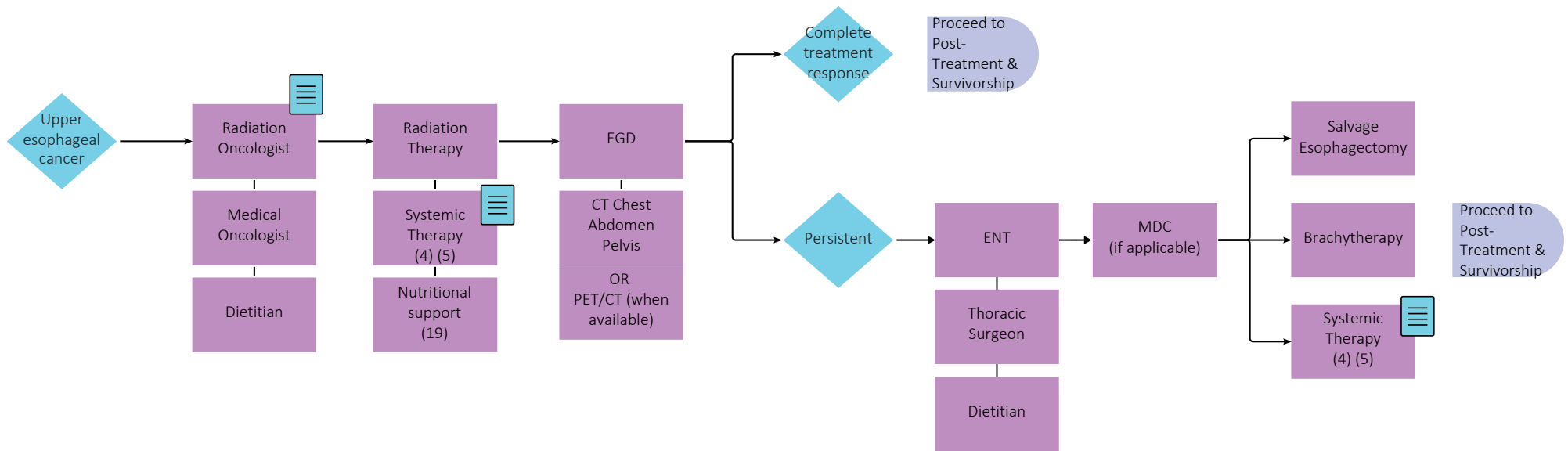
## Treatment - Early Stage Surgically Resectable (Pg. 2)



Throughout treatment, consider...

Regular symptom & performance status assessment (13); Supportive care (2, 14); Sexual & reproductive health (15, 16, 17); Co-morbidity management & medication review; Risk factor mitigation; Clinical trials (where applicable) (6); Goals of care (18); Cultural safety (1); Involvement of PCP

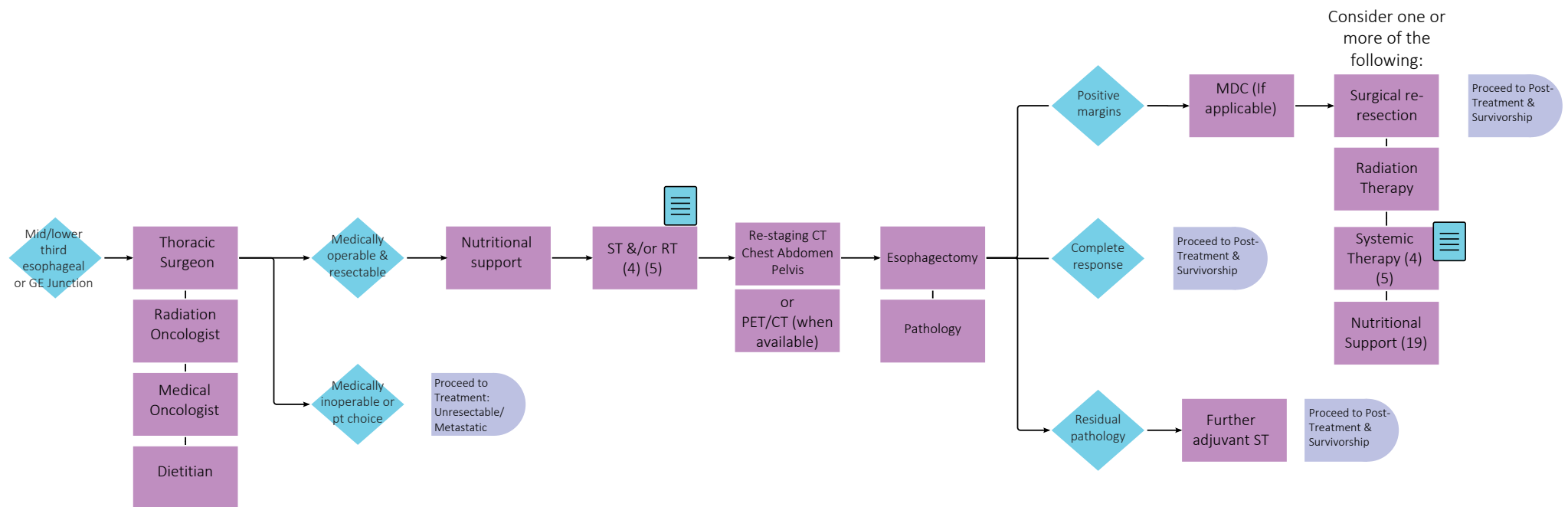
## Treatment - Surgically Resectable Requiring Neoadjuvant Treatment (Pg. 1)



Throughout treatment, consider...

Regular symptom & performance status assessment (13); Supportive care (2, 14); Sexual & reproductive health (15, 16, 17); Co-morbidity management & medication review; Risk factor mitigation; Clinical trials (where applicable) (6); Goals of care (18); Cultural safety (1); Involvement of PCP

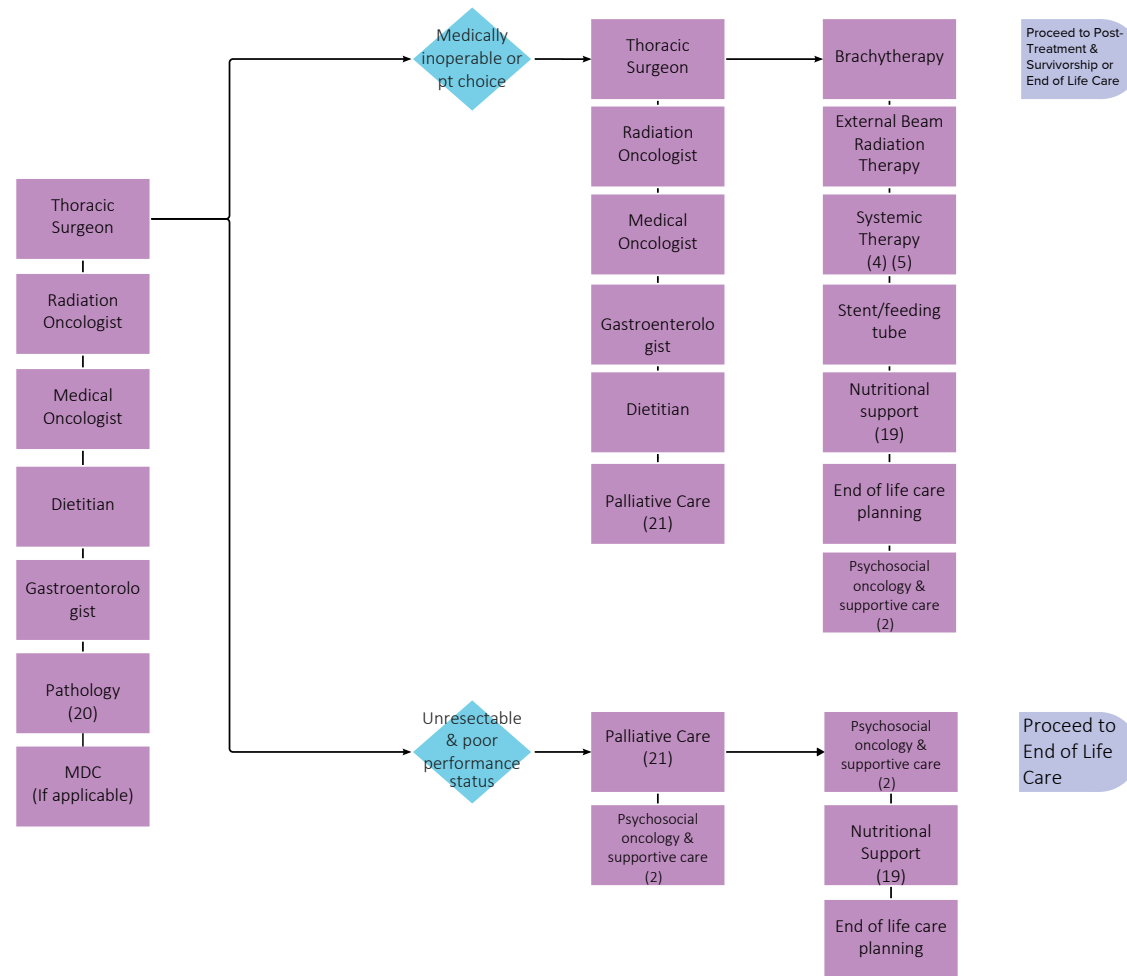
## Treatment - Surgically Resectable Requiring Neoadjuvant Treatment (Pg. 2)



Throughout treatment, consider...

Regular symptom & performance status assessment (13); Supportive care (2, 14); Sexual & reproductive health (15, 16, 17); Co-morbidity management & medication review; Risk factor mitigation; Clinical trials (where applicable) (6); Goals of care (18); Cultural safety (1); Involvement of PCP

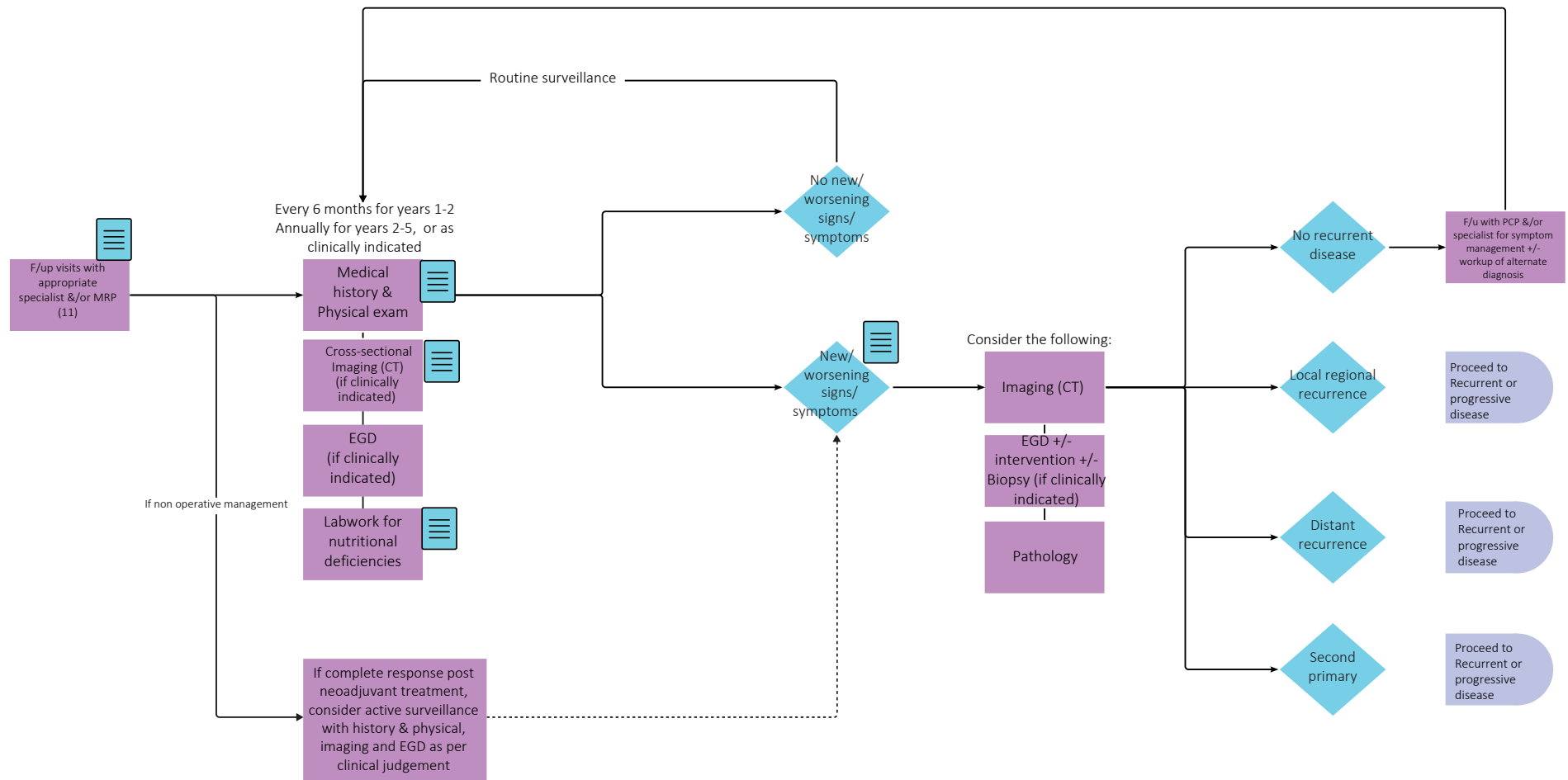
## Treatment - Unresectable/Metastatic



Throughout treatment, consider...

Regular symptom & performance status assessment (13); Supportive care (2, 14); Sexual & reproductive health (15, 16, 17); Co-morbidity management & medication review; Risk factor mitigation; Clinical trials (where applicable) (6); Goals of care (18); Cultural safety (1); Involvement of PCP

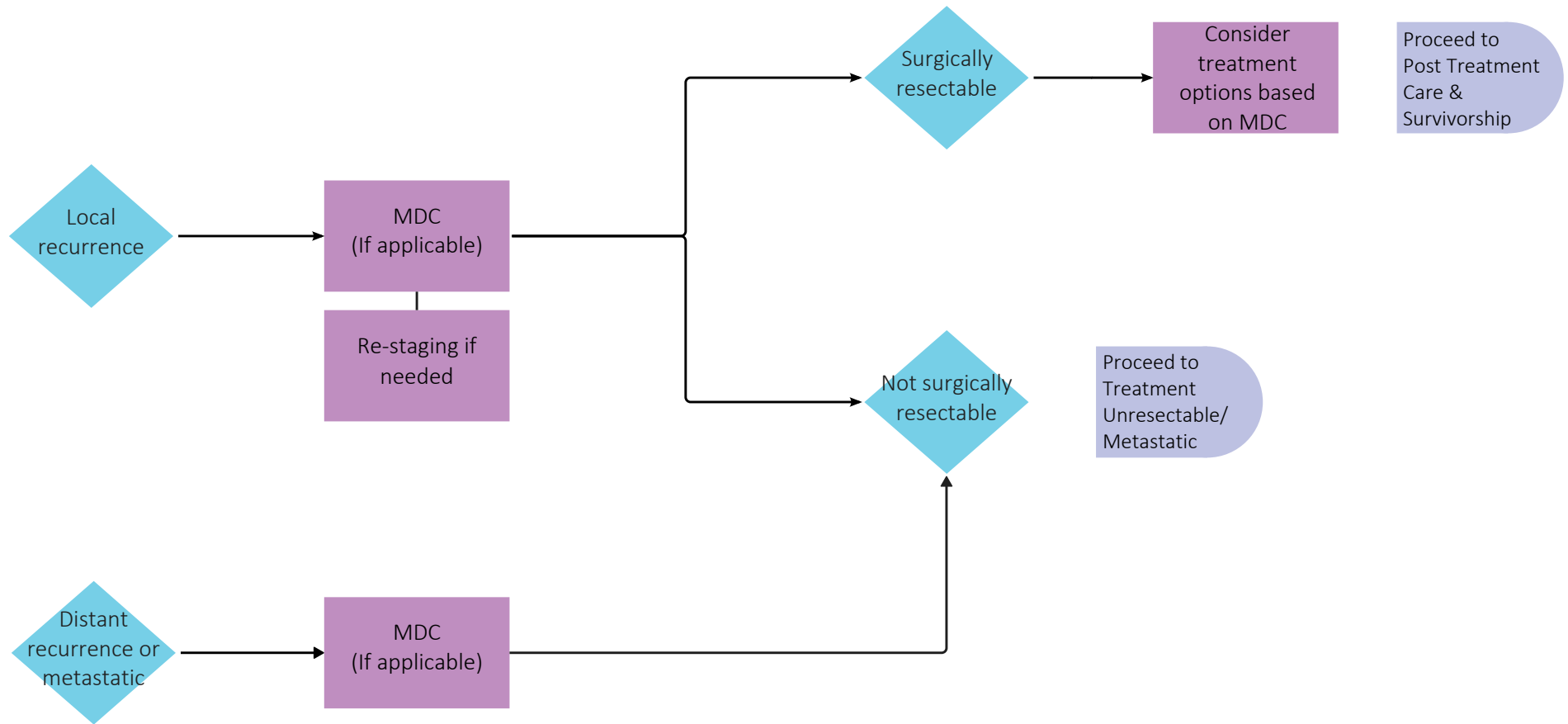
## Post Treatment Care & Survivorship



Throughout treatment, consider...

Regular symptom & performance status assessment (13); Supportive care (2, 14); Sexual & reproductive health (15, 16, 17); Co-morbidity management & medication review; Risk factor mitigation; Clinical trials (where applicable) (6); Goals of care (18); Cultural safety (1); Involvement of PCP

## Recurrent or Progressive Disease

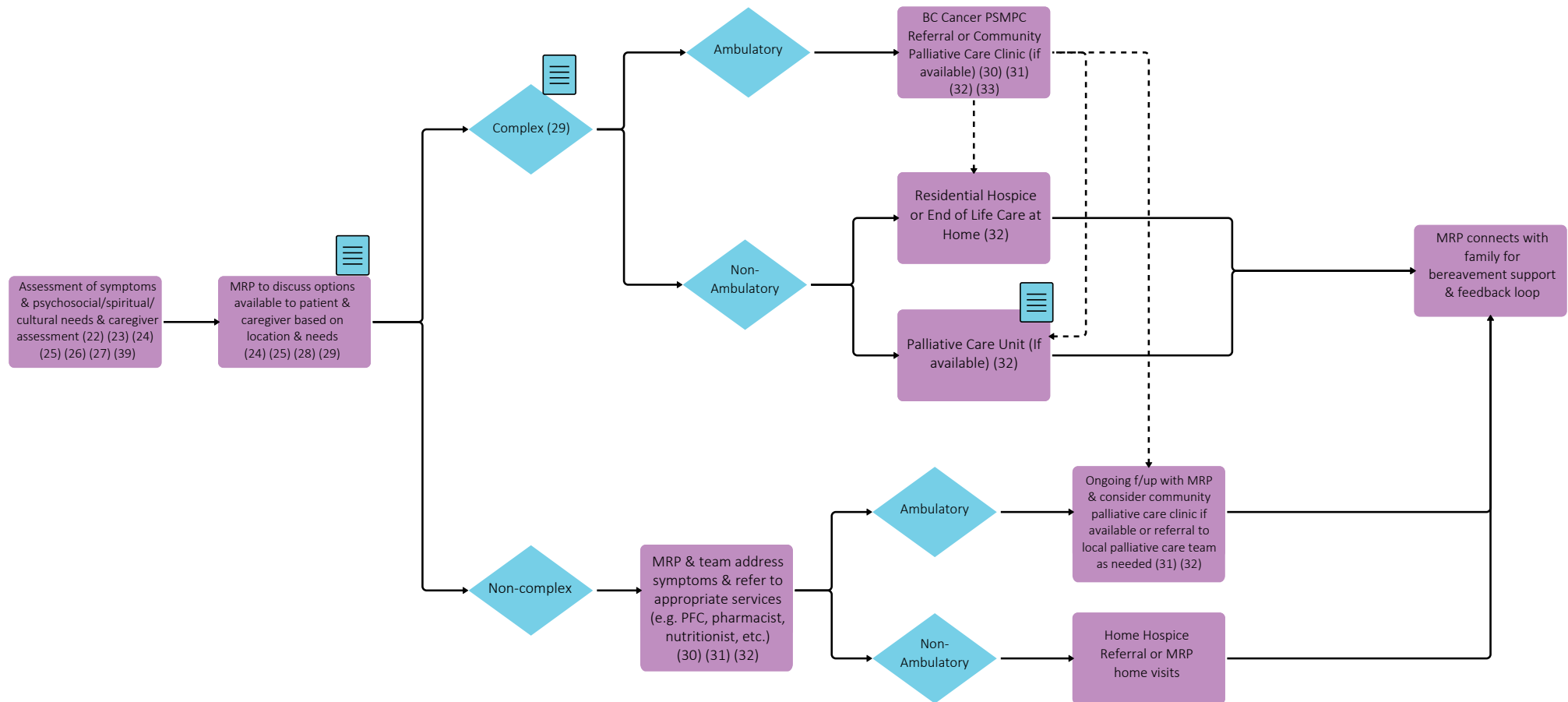


Throughout treatment, consider...

Regular symptom & performance status assessment (13); Supportive care (2, 14); Sexual & reproductive health (15, 16, 17); Co-morbidity management & medication review; Risk factor mitigation; Clinical trials (where applicable) (6); Goals of care (18); Cultural safety (1); Involvement of PCP



## End of Life Care



Throughout treatment, consider...

Goals of Care Discussions & Consideration of Cultural Safety (1, 28, 29, 34, 35, 36, 37, 38)

## Subject Matter Expert Working Group & COIs

**Howard Lim**, Project Lead, Medical Oncologist  
BMS, Taiho, Eisai, Merck, Astellas, Roche, Amgen, Pfizer, Astra-Zeneca, Beigene, Varian, CADTH

**Ian Alberts**, Nuclear Medicine Physician  
No disclosures

**Gordon Buduhan**, Surgeon  
AstraZeneca, BMS

**Catherine Clelland**, Family Physician  
No disclosures

**Trevor Hamilton**, Surgeon  
No disclosures

**Brian Kim**, Internist  
No disclosures

**Eric Lam**, Gastroenterologist  
No disclosures

**Dan Le**, Medical Oncologist  
AstraZeneca, Novocure, Knight Therapeutics

**Belinda Lean**, Dietitian  
No disclosures

**Anna McGuire**, Surgeon  
Merck, BMS, Ethicon/J&J, AZ

**Adam Meneghetti**, Surgeon  
No disclosures

**David Schaeffer**, Pathologist  
Alimentiv Health Inc; Need; Pfizer; Merck; Bayer, Satisfai Health Inc

**Devin Schellenberg**, Radiation Oncologist  
AstraZeneca, Pfizer, BMS

**Emile Woo**, Surgeon  
No disclosures

**Francis Zih**, Surgeon  
No disclosures

## Pathway Program Team

**Yashpal Bhatia**, Tumour Group Coordinator, Provincial Programs

**Tammy Currie**, Executive Director, Provincial Programs

**Amilya Ladak**, Policy Analyst, Tumour Groups

**James Loudon**, Director, Provincial Programs

**Shaifa Nanji**, Manager, Tumour Groups

**Christine Simmons**, Tumour Group Council Chair

**Elaine Wai**, Senior Executive Director, Medical Affairs and Quality

## Other Stakeholders

Family Practice & GPO

Indigenous Cancer Control

Nursing Community of Practice (NCoP)

Patient and Family Experience Team & Supportive Care

Radiation Therapists

Surgical Oncology Network

Provincial Pharmacy, Pathology & Medical Imaging Teams

## Appendix

1. <http://www.phsa.ca/aboriginal-health-site/Documents/IPN%20Fillable%20Referral%20Form.pdf>
2. <http://www.bccancer.bc.ca/our-services/services/supportive-care>
3. <https://cap.phsa.ca/>
4. <http://www.bccancer.bc.ca/health-professionals/clinical-resources/chemotherapy-protocols/gastrointestinal#Esophagus>
5. <http://www.bccancer.bc.ca/systemic-therapy-site/Documents/Policy%20and%20Forms/Patient%20assistance%20programs.pdf>
6. <https://www.bccrc.ca/dept/cid/clinical-trials>
7. <http://www.bccancer.bc.ca/health-professionals/clinical-resources/smoking-cessation-program>
8. <http://www.bccancer.bc.ca/prevent/alcohol/reduce-your-risk>
9. <http://www.bccancer.bc.ca/books/Documents/Clinical%20Care%20Pathways/Patient%20Conference%20Order.pdf>
10. <http://www.bccancer.bc.ca/health-professionals/clinical-resources/pharmacy#Contact--info>
11. <http://www.bccancer.bc.ca/family-oncology-network-site/Documents/UpperGICancer-Part1-%20PublishCopy%20-%20April%202016.pdf>
12. <http://www.bccancer.bc.ca/health-professionals-site/Documents/Patient-Referral-Form.pdf>
13. <https://www.uptodate.com/contents/image?imageKey=HEME%2F72901>
14. <http://www.bccancer.bc.ca/our-services/services/support-programs>
15. <https://www.olivefertility.com/referring-physicians>
16. <https://www.pacificfertility.ca/physician-resources>
17. <http://www.bccancer.bc.ca/health-info/coping-with-cancer/managing-symptoms-side-effects/sexual-health>
18. <http://www.bccancer.bc.ca/new-patients-site/Documents/ACP-goals-of-care-orders.pdf>
19. <http://www.bccancer.bc.ca/our-services/services/supportive-care/nutrition>
20. [https://documents.cap.org/protocols/Esophagus\\_4.2.0.1.REL\\_CAPCP.pdf?](https://documents.cap.org/protocols/Esophagus_4.2.0.1.REL_CAPCP.pdf?)
21. <http://www.bccancer.bc.ca/health-professionals/clinical-resources/pain-symptom-management-palliative-care>
22. <http://www.bccancer.bc.ca/our-services/centres-clinics/bc-cancer-vancouver/epicc>
23. [https://www2.gov.bc.ca/assets/gov/health/practitioner-pro/bc-guidelines/palliative1\\_appendix\\_a.pdf](https://www2.gov.bc.ca/assets/gov/health/practitioner-pro/bc-guidelines/palliative1_appendix_a.pdf)
24. <https://www.bc-cpc.ca/publications/symptom-management-guidelines/>
25. <https://www2.gov.bc.ca/gov/content/health/practitioner-professional-resources/bc-guidelines/palliative-care>
26. <https://www2.gov.bc.ca/gov/content/health/practitioner-professional-resources/pharmacare/prescribers/plan-p-bc-palliative-care-benefits-program>
27. <http://www.bccancer.bc.ca/our-services/services/indigenous-cancer-control>
28. <http://www.bccancer.bc.ca/new-patients-site/Documents/SeriousIllnessConversationGuideCard.pdf>
29. <http://www.phsa.ca/health-info/medical-assistance-in-dying>
30. <http://www.bccancer.bc.ca/managing-symptoms-site/Documents/PSMPC-Referral-Form-for-All-BC-Cancer-Centres.pdf>
31. <http://www.bccancer.bc.ca/our-services/services/supportive-care/pain-symptom-management#What--we--do>
32. [https://vancouver.pathwaysbc.ca/service\\_categories/24](https://vancouver.pathwaysbc.ca/service_categories/24)
33. [http://www.bccancer.bc.ca/new-patients-site/Documents/MIPPC\\_Referral\\_Form.pdf](http://www.bccancer.bc.ca/new-patients-site/Documents/MIPPC_Referral_Form.pdf)
34. <http://www.bccancer.bc.ca/new-patients-site/Documents/Goals%20of%20Care%20Orders%20Form%20June%202018%20Final.pdf>
35. <https://www2.gov.bc.ca/assets/gov/people/seniors/health-safety/pdf/myvoice-advancecareplanningguide.pdf>
36. <https://www2.gov.bc.ca/gov/content/family-social-supports/seniors/health-safety/advance-care-planning>
37. <http://www.bccancer.bc.ca/managing-symptoms-site/Documents/When-Life-Nearing-its-End.pdf>
38. <http://www.bccancer.bc.ca/new-patients-site/Documents/ACP-tips-for-oncology-professionals.pdf>
39. <http://www.bccancer.bc.ca/books/Documents/Clinical%20Care%20Pathways/Revised%20PSMPC%20Questionnaire%20Pink%20Form%202020-21.pdf>
40. <http://www.phsa.ca/health-professionals/professional-resources/language-services/translation>
41. <http://www.bccancer.bc.ca/our-services/services/library>