

Primary Care Practitioners
(Family Practice)

Indigenous Cancer Care

Supportive Care

(Counselling, Psychiatry, Nutrition, Speech Language Pathology, Physiotherapy, Pain & Symptom Management/Palliative Care)

This figure represents a general pathway of care that most people with cancer will experience. It shows

- The major phases of a cancer journey
- How a person might progress through each phase
- Key supportive services that are available throughout each person's cancer journey

Please visit the [Clinical Pathways Web](#) page for

- Tumour Group Clinical Pathways
- Patient Companion Guide
- Methodology Reports

Target Population

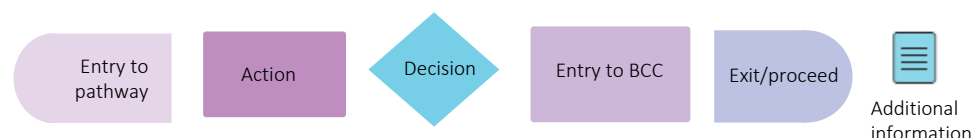
The target population for this pathway include health care providers such as primary care practitioners, oncologists, specialists, nurses, and other members of a health care team including allied health providers. Healthcare administrators across BC Cancer and the health authorities may also benefit from this resource for systems and operational planning.

Pathway Disclaimer

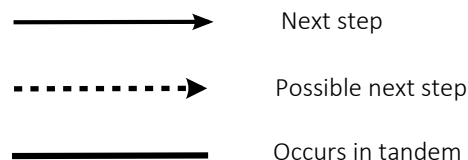
This pathway is an informational resource, intended to provide a high-level overview of the treatment journey a patient in British Columbia may receive. This pathway is not a substitute for medical advice and clinical judgment is still required as not all care trajectories will follow the proposed steps outlined in the pathway. This resource may not reflect all available evidence as research continues to evolve rapidly and BC Cancer is not responsible for any incomplete information. Furthermore, BC Cancer and those involved in developing this pathway are not liable for any incidental or consequential outcomes related to the information in this pathway. Anyone using the information provided in this pathway does so at their own risk.

Pathway Map Legend

Shape Guide



Line Guide



Pathway Map Considerations

This pathway is intended as a high-level resource and therefore does not include specific recommendations on specific systemic therapy protocols or radiation therapy doses. Instead, additional information can be sought via the inserted hyperlinks to resources that may aid a clinician in their treatment planning. The level of detail for each pathway was guided by the tumor group lead and intentionally kept high-level and represents the overall ideal pathway of care for a patient in general. Each patient will have individual needs and each cancer centre may have variation in the way care is delivered, but overall the intent was to represent the pathway that the majority of patients will follow.

General Resources

Indigenous Patient Navigator Referral form (1): <http://www.phsa.ca/aboriginal-health-site/Documents/IPN%20Fillable%20Referral%20Form.pdf>
Supportive Care(2): <http://www.bccancer.bc.ca/our-services/services/supportive-care>
Compassionate Access Program(CAP)(3): <https://cap.phsa.ca/>
Lung Chemotherapy Protocols(4): <http://www.bccancer.bc.ca/health-professionals/clinical-resources/chemotherapy-protocols/lung>
Manufacturer Patient Assistance Programs(5): <http://www.bccancer.bc.ca/systemic-therapy-site/Documents/Policy%20and%20Forms/Patient%20assistance%20programs.pdf>
BC Cancer Research Clinical Trials(6): <https://www.bccrc.ca/dept/cid/clinical-trials>
Smoking Cessation Program(7): <http://www.bccancer.bc.ca/health-professionals/clinical-resources/smoking-cessation-program>
Alcohol Reduction(8): <http://www.bccancer.bc.ca/prevent/alcohol/reduce-your-risk>
MDC Referral Form(9): <http://www.bccancer.bc.ca/books/Documents/Clinical%20Care%20Pathways/Patient%20Conference%20Order.pdf>
Pharmacy Contact Info(10): <http://www.bccancer.bc.ca/health-professionals/clinical-resources/pharmacy#Contact--info>
Language & Translation Services(48): <http://www.phsa.ca/health-professionals/professional-resources/language-services/translation>
BC Cancer Library (49): <http://www.bccancer.bc.ca/our-services/services/library>

Abbreviations

PCP: Primary Care Provider
COPD: Chronic Obstructive Pulmonary Disease
EBUS: Endobronchial Ultrasound
MDC: Multidisciplinary Conference/Discussion
MRP: Most Responsible Provider
PFC: Patient & Family Counseling
PSMPC: Pain & Symptom Management & Palliative Care
RT: Radiation Therapy
ST: Systemic Therapy

NSCLC: Non-Small Cell Lung Cancer
SCLC: Small Cell Lung Cancer
CNS: Central Nervous System
PCI: Percutaneous Coronary Intervention

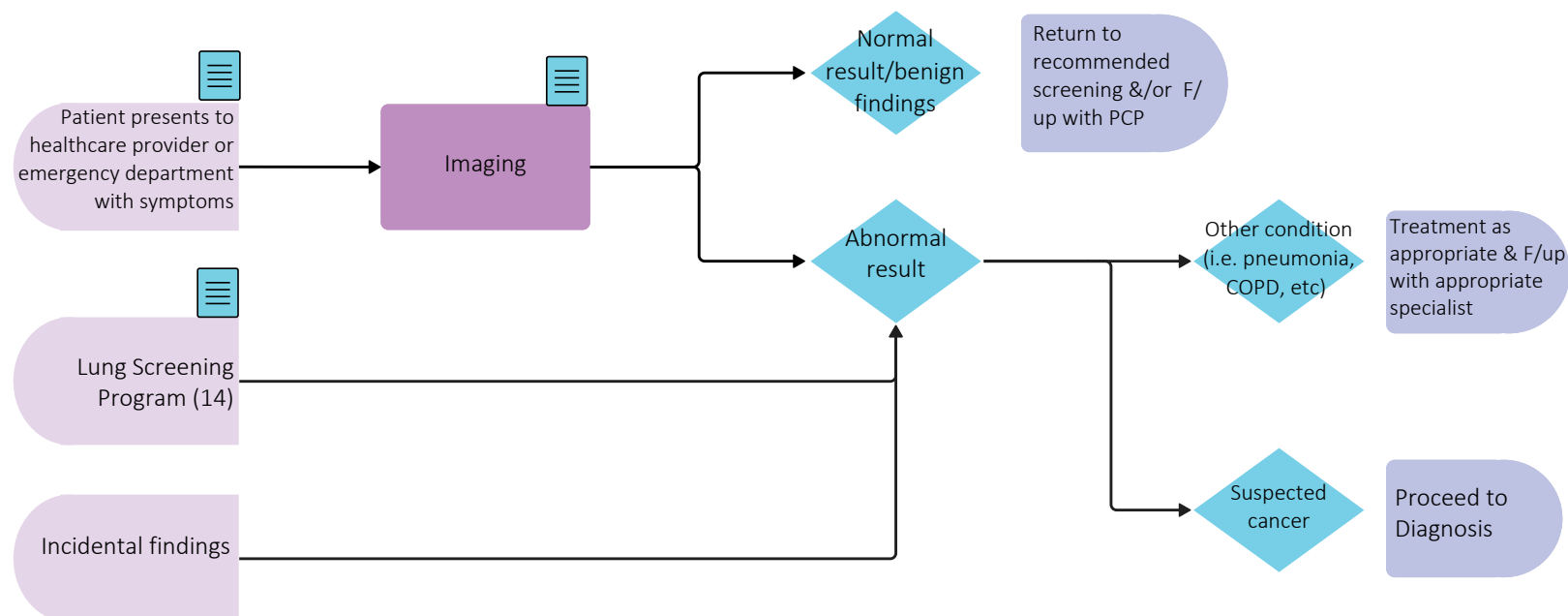
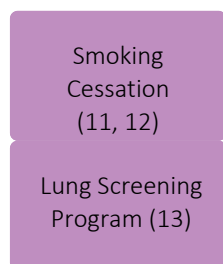
Additional Information

To learn more about how the Clinical Care Pathways are developed, visit the [Methodology Report](#).

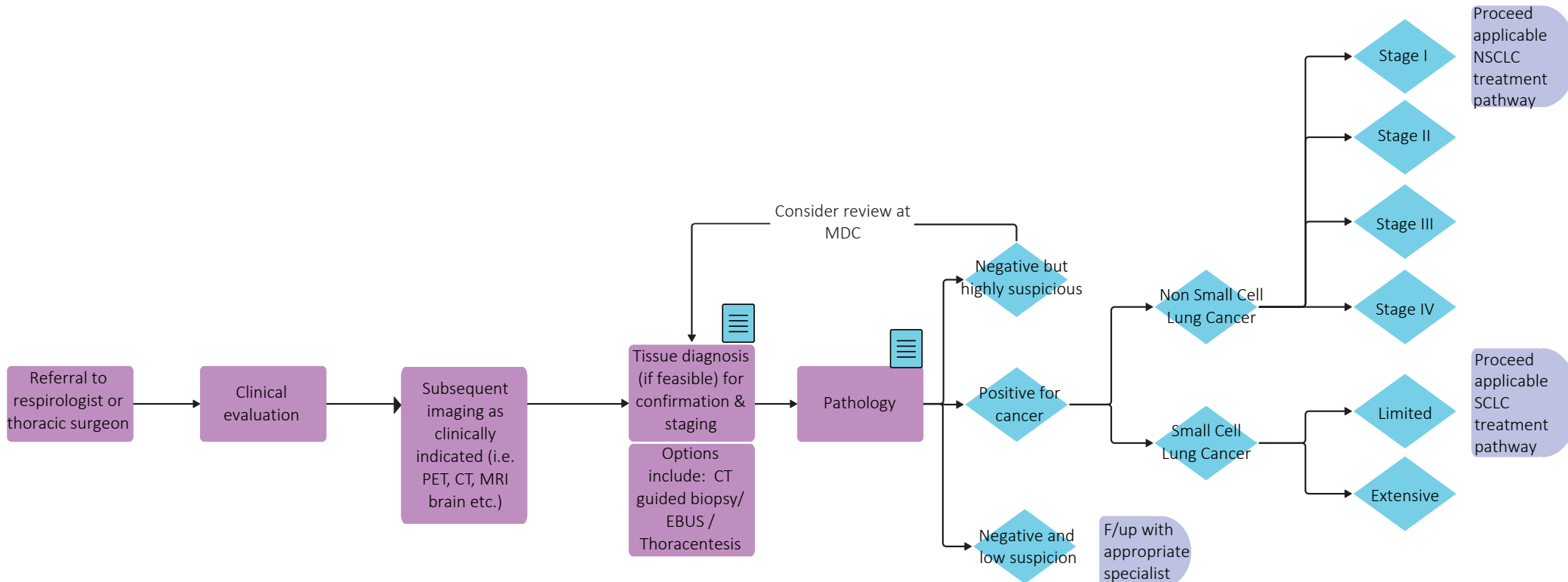
Other Tumour Group Clinical Care Pathways can be found on the [BC Cancer Website](#).

Pre-Diagnosis

Prevention practices



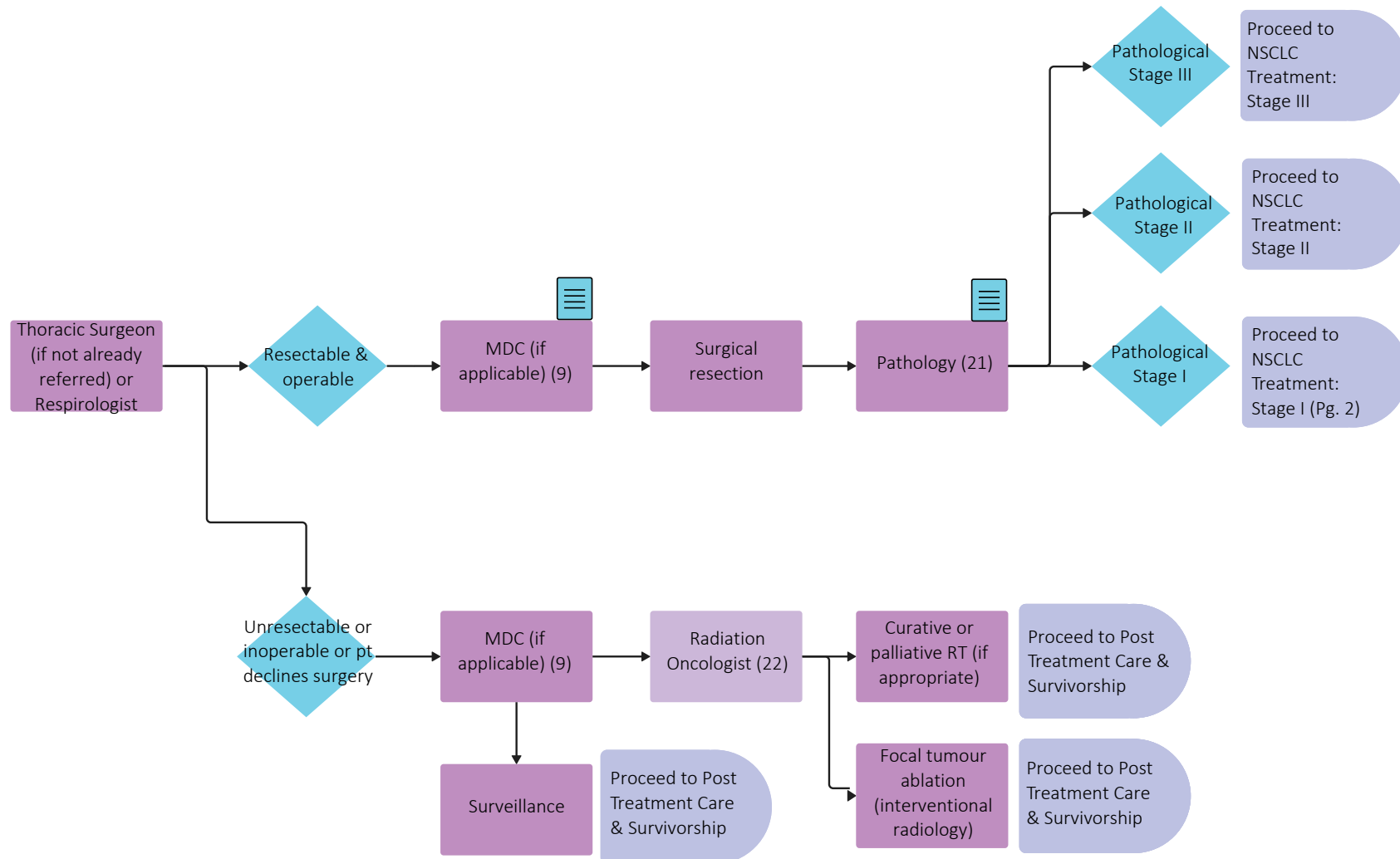
Diagnosis



Throughout treatment, consider...

Regular symptom & performance status assessment (15); Supportive care (2, 16); Sexual & reproductive health (17, 18, 19); Co-morbidity management & medication review; Risk factor mitigation; Clinical trials (where applicable)(6); Goals of care (20); Cultural safety (1); Involvement of PCP

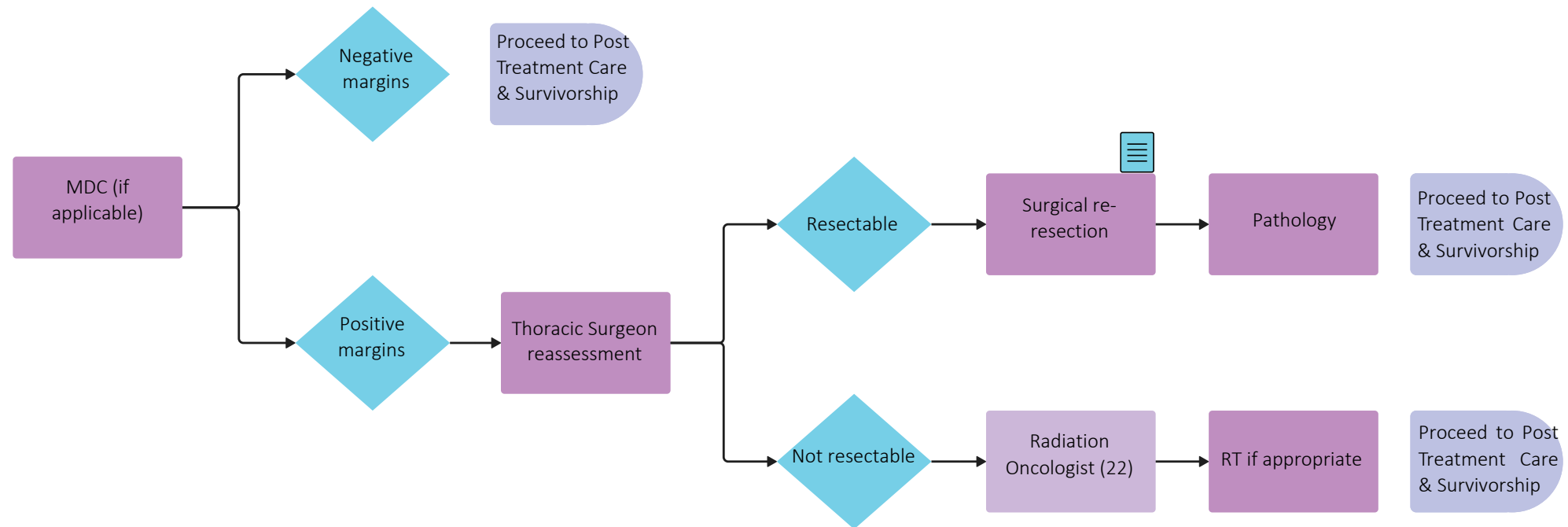
NSCLC Treatment: Stage I (Pg. 1)



Throughout treatment, consider...

Regular symptom & performance status assessment (15); Supportive care (2, 16); Sexual & reproductive health (17, 18, 19); Co-morbidity management & medication review; Risk factor mitigation; Clinical trials (where applicable)(6); Goals of care (20); Cultural safety (1); Involvement of PCP

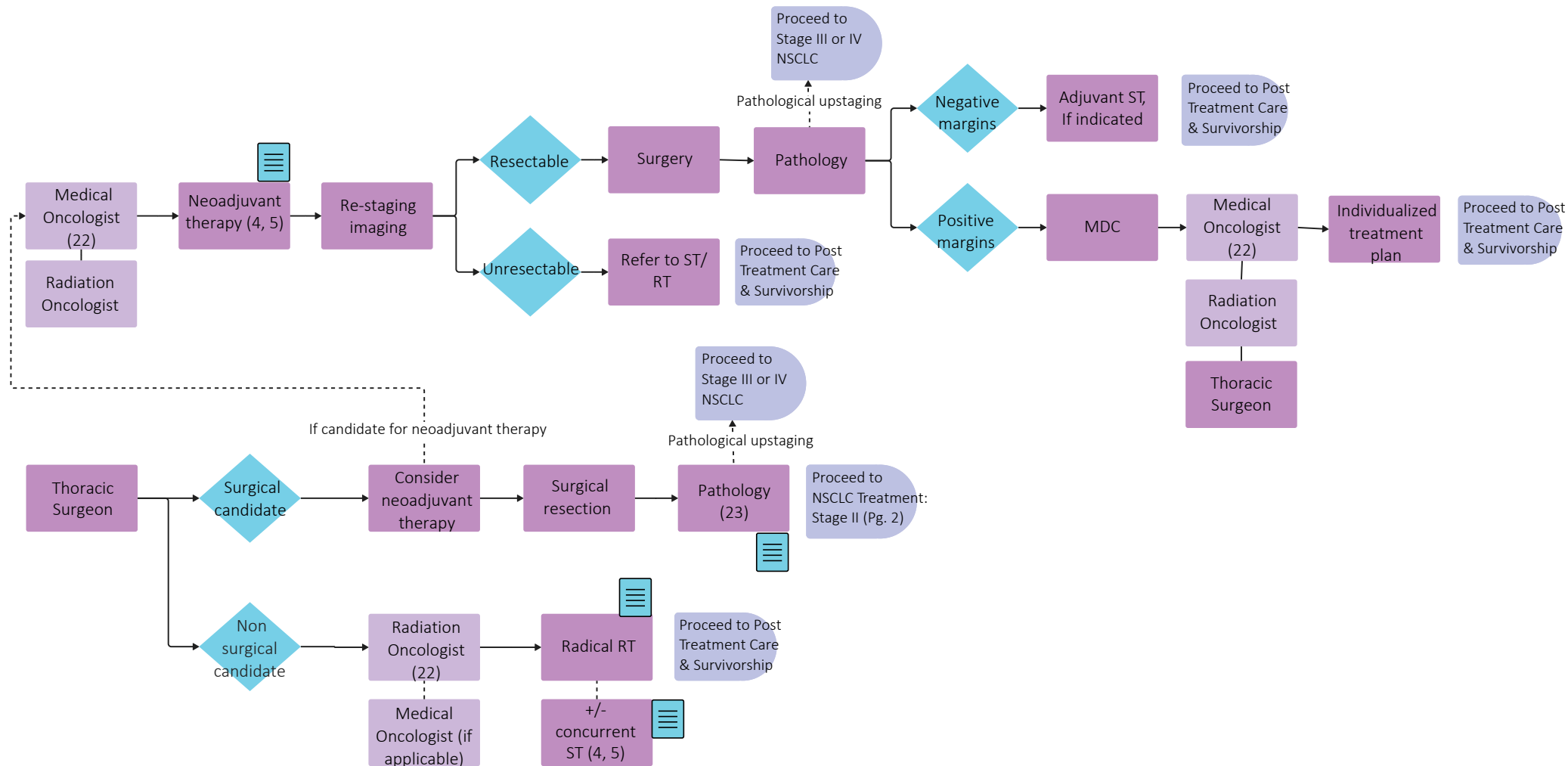
NSCLC Treatment: Stage I (Pg. 2)



Throughout treatment, consider...

Regular symptom & performance status assessment (15); Supportive care (2, 16); Sexual & reproductive health (17, 18, 19); Co-morbidity management & medication review; Risk factor mitigation; Clinical trials (where applicable)(6); Goals of care (20); Cultural safety (1); Involvement of PCP

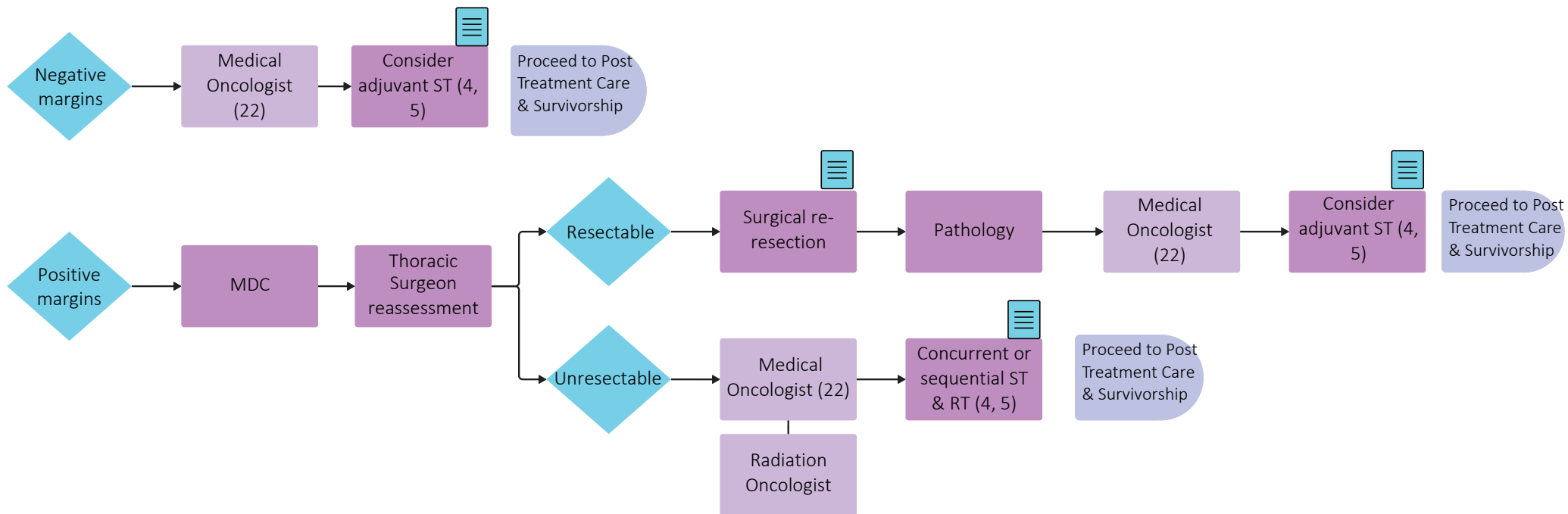
NSCLC Treatment: Stage II (Pg. 1)



Throughout treatment, consider...

Regular symptom & performance status assessment (15); Supportive care (2, 16); Sexual & reproductive health (17, 18, 19); Co-morbidity management & medication review; Risk factor mitigation; Clinical trials (where applicable)(6); Goals of care (20); Cultural safety (1); Involvement of PCP

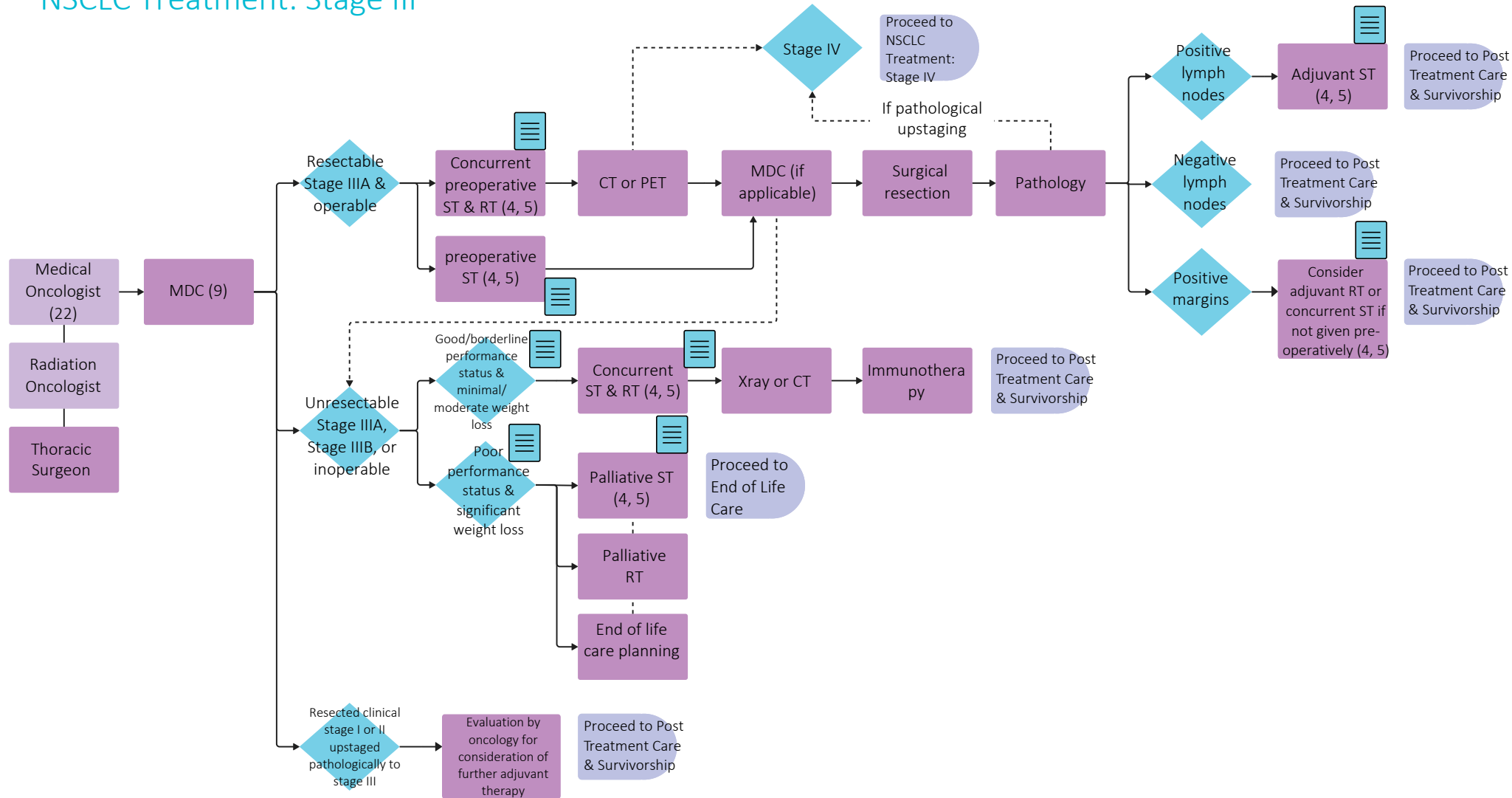
NSCLC Treatment: Stage II (Pg. 2)



Throughout treatment, consider...

Regular symptom & performance status assessment (15); Supportive care (2, 16); Sexual & reproductive health (17, 18, 19); Co-morbidity management & medication review; Risk factor mitigation; Clinical trials (where applicable)(6); Goals of care (20); Cultural safety (1); Involvement of PCP

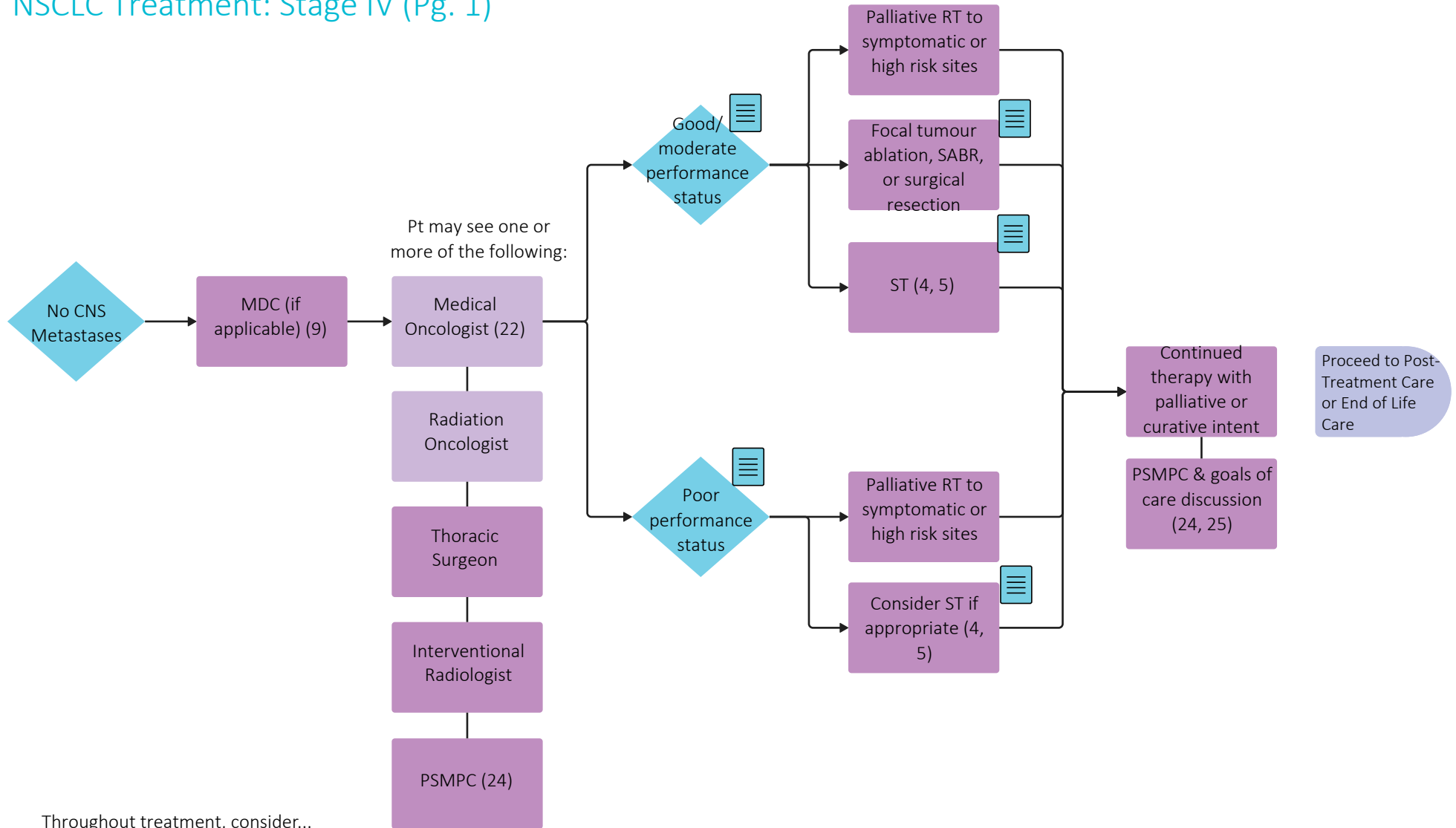
NSCLC Treatment: Stage III



Throughout treatment, consider...

Regular symptom & performance status assessment (15); Supportive care (2, 16); Sexual & reproductive health (17, 18, 19); Co-morbidity management & medication review; Risk factor mitigation; Clinical trials (where applicable)(6); Goals of care (20); Cultural safety (1); Involvement of PCP

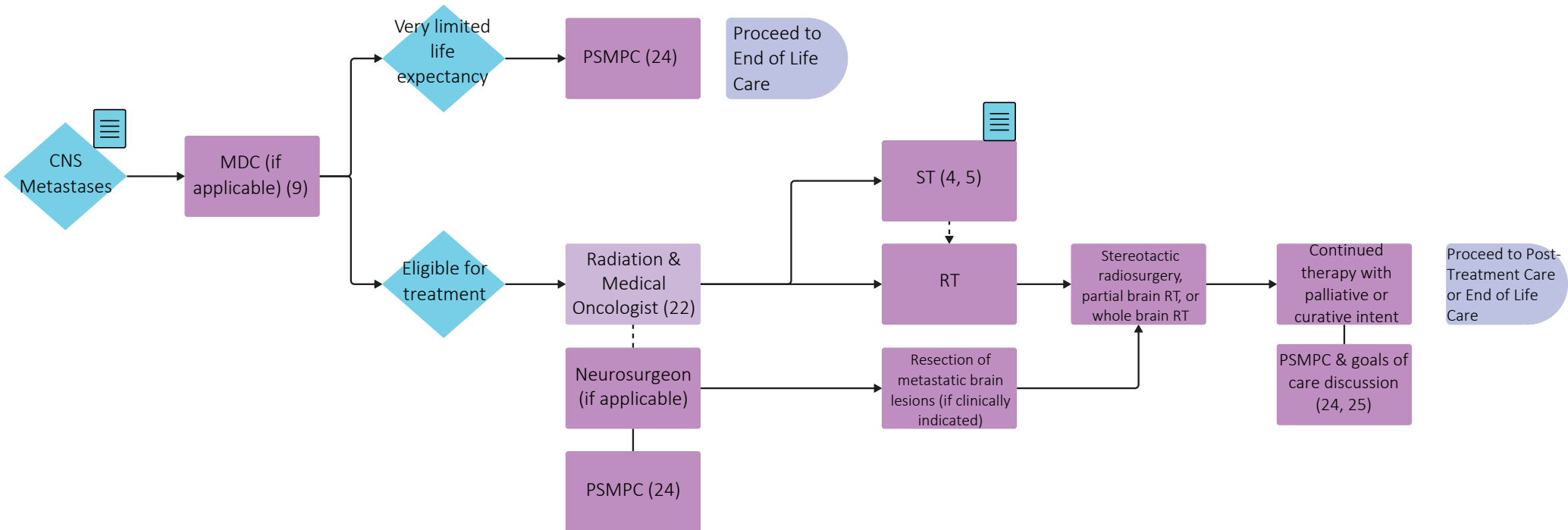
NSCLC Treatment: Stage IV (Pg. 1)



Throughout treatment, consider...

Regular symptom & performance status assessment (15); Supportive care (2, 16); Sexual & reproductive health (17, 18, 19); Co-morbidity management & medication review; Risk factor mitigation; Clinical trials (where applicable)(6); Goals of care (20); Cultural safety (1); Involvement of PCP

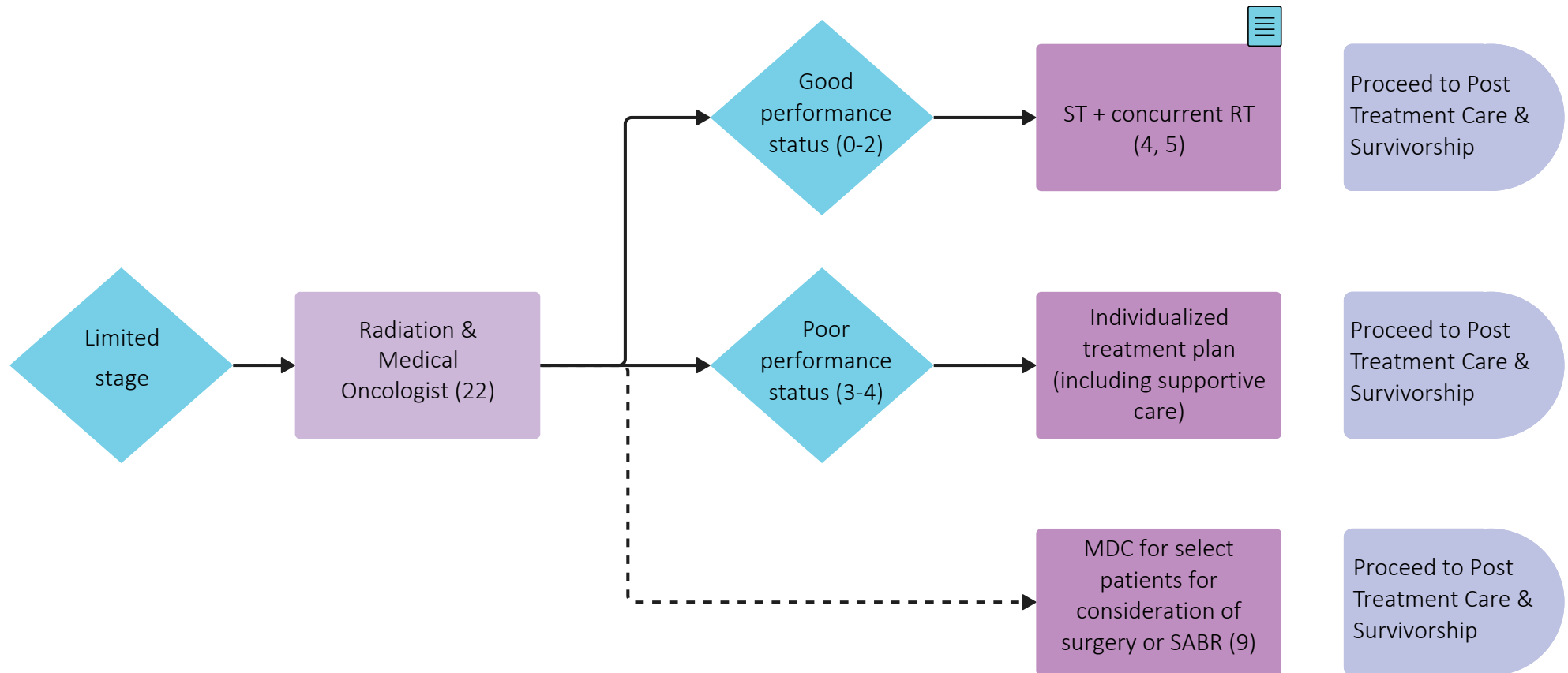
NSCLC Treatment: Stage IV (Pg. 2)



Throughout treatment, consider...

Regular symptom & performance status assessment (15); Supportive care (2, 16); Sexual & reproductive health (17, 18, 19); Co-morbidity management & medication review; Risk factor mitigation; Clinical trials (where applicable)(6); Goals of care (20); Cultural safety (1); Involvement of PCP

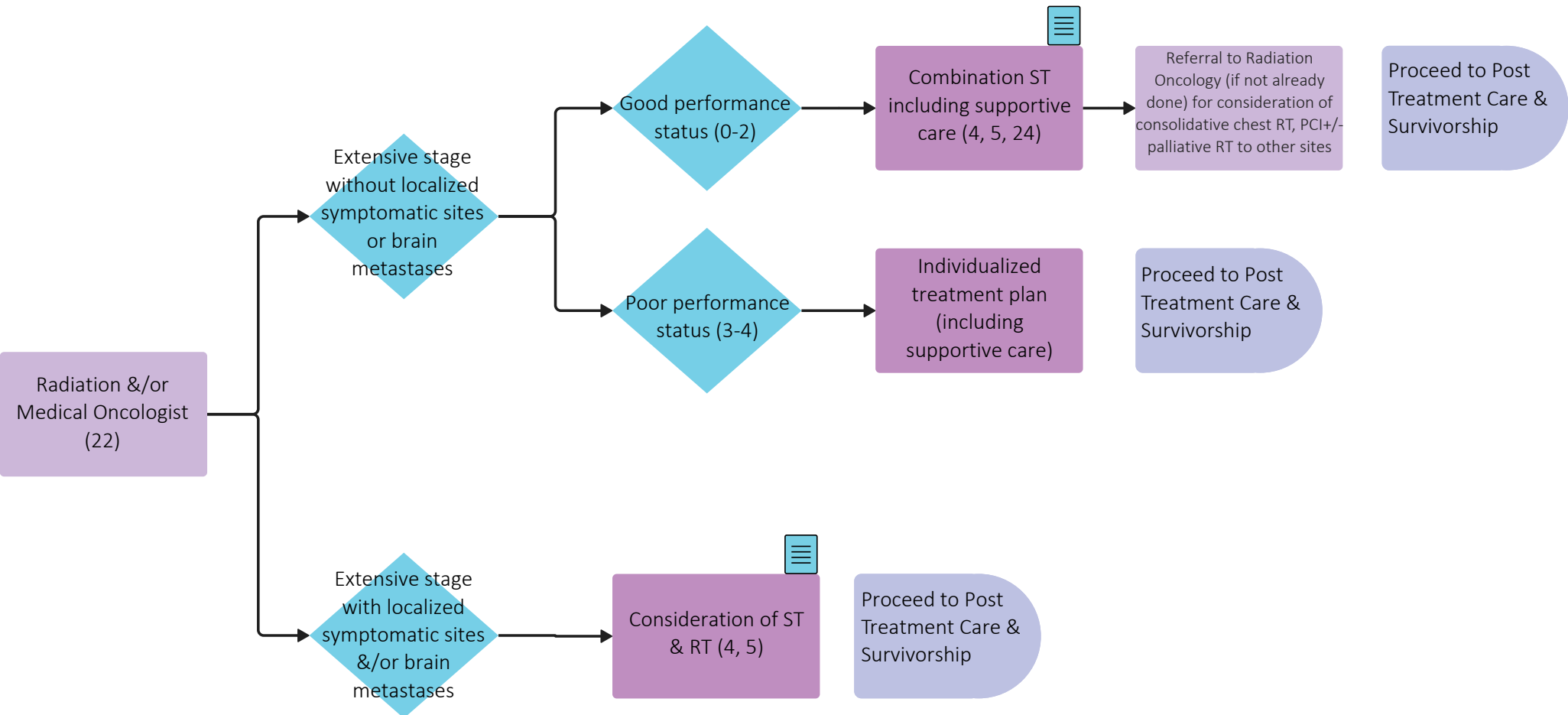
SCLC Treatment: Limited Stage



Throughout treatment, consider...

Regular symptom & performance status assessment (18); Supportive care (2, 19); Sexual & reproductive health (20, 21, 22); Co-morbidity management & medication review; Risk factor mitigation; Clinical trials (where applicable)(6); Goals of care (23); Cultural safety (1); Involvement of PCP, Genetics referral (where applicable) (23); Enhanced recovery pathway; Consider referral to Enterostomal Therapy Nurse (24)

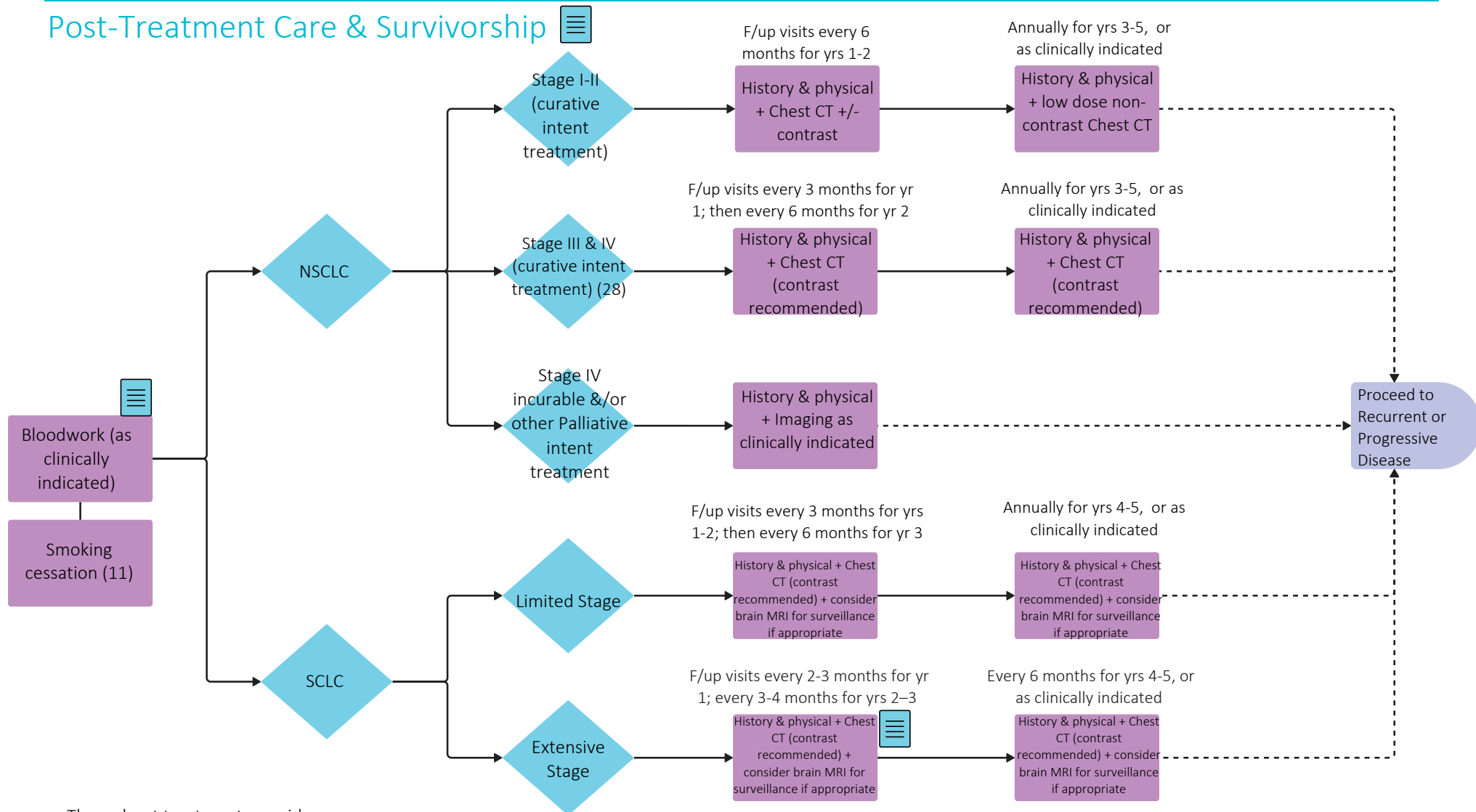
SCLC Treatment: Extensive Stage



Throughout treatment, consider...

Regular symptom & performance status assessment (15); Supportive care (2, 16); Sexual & reproductive health (17, 18, 19); Co-morbidity management & medication review; Risk factor mitigation; Clinical trials (where applicable)(6); Goals of care (20); Cultural safety (1); Involvement of PCP

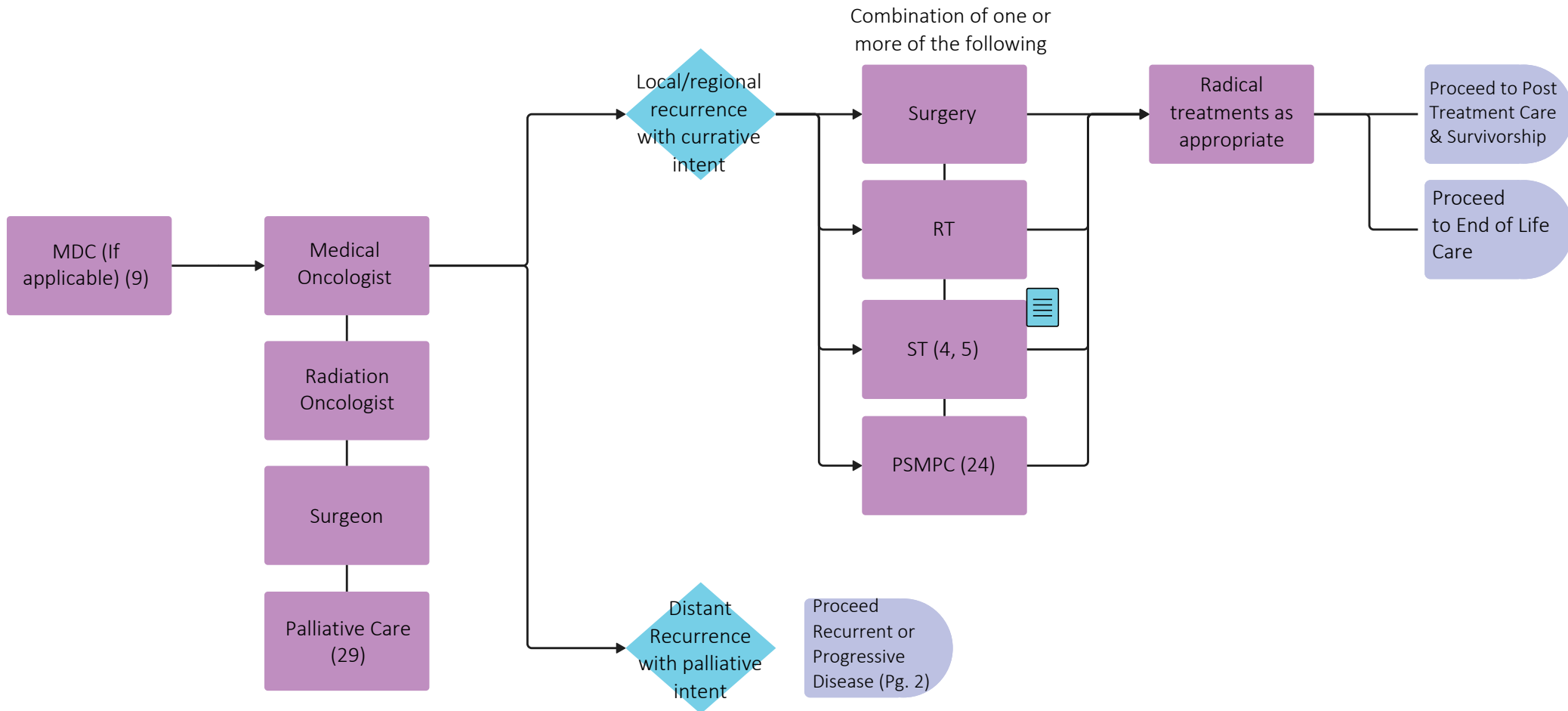
Post-Treatment Care & Survivorship



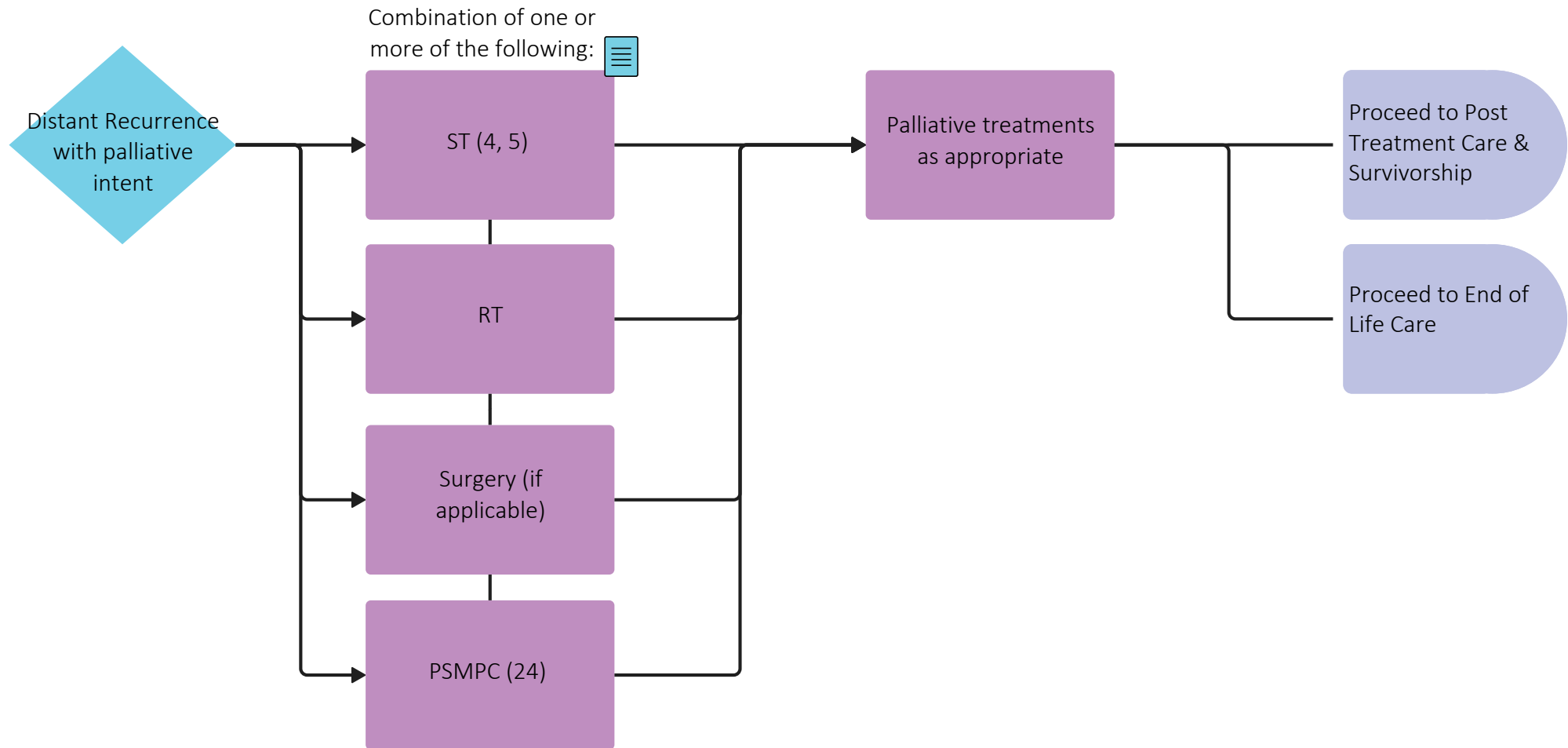
Throughout treatment, consider...

Regular symptom & performance status assessment (15); Supportive care (2, 16); Sexual & reproductive health (17, 18, 19); Co-morbidity management & medication review; Risk factor mitigation; Clinical trials (where applicable)(6); Goals of care (20); Cultural safety (1); Involvement of PCP

Recurrent or Progressive Disease (Pg. 1)



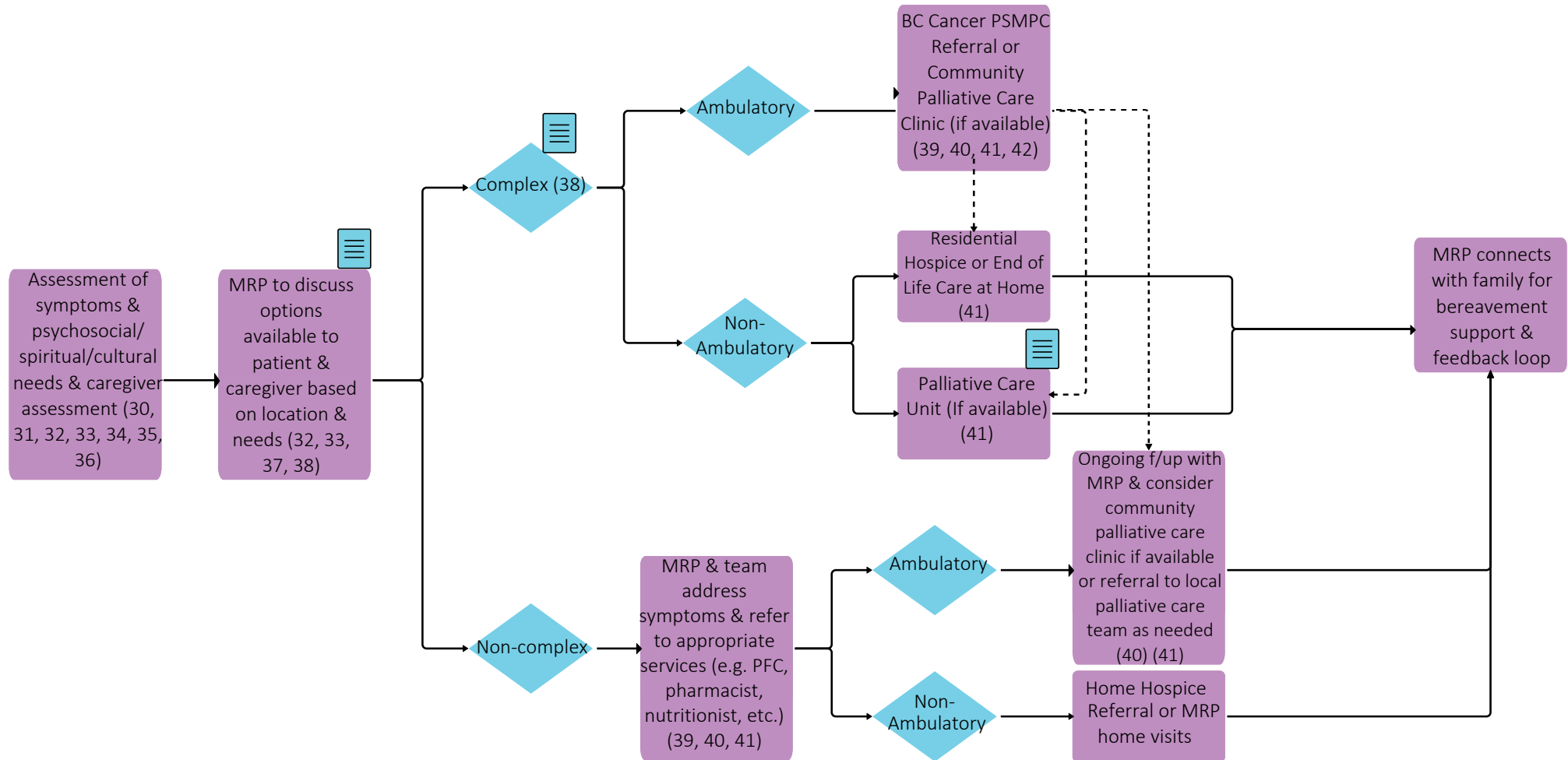
Recurrent or Progressive Disease (Pg. 2)



Throughout treatment, consider...

Regular symptom & performance status assessment (15); Supportive care (2, 16); Sexual & reproductive health (17, 18, 19); Co-morbidity management & medication review; Risk factor mitigation; Clinical trials (where applicable)(6); Goals of care (20); Cultural safety (1); Involvement of PCP

End of Life Care



Throughout treatment, consider...

Goals of Care Discussions & Consideration of Cultural Safety (1, 37, 38, 43, 44, 45, 46, 47)

Subject Matter Expert Working Group & COIs

Sophie Sun, Project Lead, Medical Oncologist
COI Pending

Ian Bosdet, Pathology - Clinical Molecular Geneticist
No disclosures

Maura Brown, Diagnostic Imaging
Synthesis Health Inc, Doctors of BC

Gordon Buduhan, Thoracic Surgeon
AstraZeneca, BMS

Hannah Carolan, Radiation Oncologist
No disclosures

Maryam Dosani, Radiation Oncologist
BC Cancer funded BCOU retrospective review

Michelle Ferguson, Radiation Oncologist
COI Pending

Diana Ionescu, Pathologist
COI Pending

Stephen Lam, Respiriologist
Canadian Partnership Against Cancer,
Canadian Cancer Society, Terry Fox Research
Institute, CIHR, NIH/NCI, Nucleix Inc.

Shilo Lefresne, Radiation Oncologist
AstraZeneca

Anna McGuire, Thoracic Surgeon
Merck, BMS, Ethicon/J&J, AZ

Zia Poonja, Medical Oncologist
Merck, AstraZeneca, Gilead, BMS, Roche

Sanjay Rao, Medical Oncologist
AstraZeneca, Sanofi, BMS, Merck

Tawimas Shaipanich, Respirologist
No disclosures

Pete Tonseth, Molecular Imaging & Therapy
No disclosures

Stephen Yip, Pathologist
Amgen, AstraZeneca, Bayer, Janssen,
Roche, Pfizer

Pathway Program Team

Yashpal Bhatia, Tumour Group Coordinator, Provincial Programs

Tammy Currie, Executive Director, Provincial Programs

Amilya Ladak, Policy Analyst, Tumour Groups

James Loudon, Director, Provincial Programs

Shaifa Nanji, Manager, Tumour Groups

Christine Simmons, Tumour Group Council Chair

Elaine Wai, Senior Executive Director, Medical Affairs and Quality

Other Stakeholders

Family Practice & GPO

Indigenous Cancer Control

Nursing Community of Practice (NCoP)

Patient and Family Experience Team & Supportive Care

Radiation Therapists

Surgical Oncology Network

Provincial Pharmacy, Pathology & Medical Imaging Teams

Appendix

1. <http://www.phsa.ca/aboriginal-health-site/Documents/IPN%20Fillable%20Referral%20Form.pdf>
2. <http://www.bccancer.bc.ca/our-services/services/supportive-care>
3. <https://cap.phsa.ca/>
4. <http://www.bccancer.bc.ca/health-professionals/clinical-resources/chemotherapy-protocols/lung>
5. <http://www.bccancer.bc.ca/systemic-therapy-site/Documents/Policy%20and%20Forms/Patient%20assistance%20programs.pdf>
6. <https://www.bccrc.ca/dept/cid/clinical-trials>
7. <http://www.bccancer.bc.ca/health-professionals/clinical-resources/smoking-cessation-program>
8. <http://www.bccancer.bc.ca/prevent/alcohol/reduce-your-risk>
9. <http://www.bccancer.bc.ca/books/Documents/Clinical%20Care%20Pathways/Patient%20Conference%20Order.pdf>
10. <http://www.bccancer.bc.ca/health-professionals/clinical-resources/pharmacy#Contact--info>
11. <http://www.bccancer.bc.ca/health-professionals/clinical-resources/smoking-cessation-program>
12. <https://quitnow.ca/>
13. <http://www.bccancer.bc.ca/screening/lung/get-screened>
14. <http://www.bccancer.bc.ca/screening/lung/get-screened/who-should-be-screened>
15. <https://www.uptodate.com/contents/image?imageKey=HEME%2F72901>
16. <http://www.bccancer.bc.ca/our-services/services/support-programs>
17. <https://www.olivefertility.com/referring-physicians>
18. <https://www.pacificfertility.ca/physician-resources>
19. <http://www.bccancer.bc.ca/health-info/coping-with-cancer/managing-symptoms-side-effects/sexual-health>
20. <http://www.bccancer.bc.ca/new-patients-site/Documents/ACP-goals-of-care-orders.pdf>
21. <https://cancerogeneticslab.ca/requisitions/>
22. <http://www.bccancer.bc.ca/health-professionals-site/Documents/Patient-Referral-Form.pdf>
23. https://cancerogeneticslab.ca/wp-content/uploads//2023/09/CACG_CGL_3015-CGL-Solid-Tumour-Requisition-Molecular.pdf
24. <http://www.bccancer.bc.ca/our-services/services/supportive-care/pain-symptom-management>
25. <http://www.bccancer.bc.ca/health-info/coping-with-cancer/advance-care-planning>
26. <http://www.bccancer.bc.ca/books/lung/management/follow-up-practice-guidelines>
27. <https://ascopubs.org/doi/full/10.1200/JCO.19.02748>
28. <https://www.ncbi.nlm.nih.gov/pmc/articles/PMC10137068/>
29. <http://www.bccancer.bc.ca/health-professionals/clinical-resources/pain-symptom-management-palliative-care>
30. <http://www.bccancer.bc.ca/our-services/centres-clinics/bc-cancer-vancouver/epicc>
31. https://www2.gov.bc.ca/assets/gov/health/practitioner-pro/bc-guidelines/palliative1_appendix_a.pdf
32. <https://www.bc-cpc.ca/publications/symptom-management-guidelines/>
33. <https://www2.gov.bc.ca/gov/content/health/practitioner-professional-resources/bc-guidelines/palliative-care>
34. <https://www2.gov.bc.ca/gov/content/health/practitioner-professional-resources/pharmacare/prescribers/plan-p-bc-palliative-care-benefits-program>
35. <http://www.bccancer.bc.ca/our-services/services/indigenous-cancer-control>
36. <http://www.bccancer.bc.ca/books/Documents/Clinical%20Care%20Pathways/Revised%20PSMPC%20Questionnaire%20Pink%20Form%202020-21.pdf>

Appendix

37. <http://www.bccancer.bc.ca/new-patients-site/Documents/SeriousIllnessConversationGuideCard.pdf>
38. <http://www.phsa.ca/health-info/medical-assistance-in-dying>
39. <http://www.bccancer.bc.ca/managing-symptoms-site/Documents/PSMPC-Referral-Form-for-All-BC-Cancer-Centres.pdf>
40. <http://www.bccancer.bc.ca/our-services/services/supportive-care/pain-symptom-management#What--we--do>
41. https://vancouver.pathwaysbc.ca/service_categories/24
42. http://www.bccancer.bc.ca/new-patients-site/Documents/MIPPC_Referral_Form.pdf
43. <http://www.bccancer.bc.ca/new-patients-site/Documents/Goals%20of%20Care%20Orders%20Form%20June%202018%20Final.pdf>
44. <https://www2.gov.bc.ca/assets/gov/people/seniors/health-safety/pdf/myvoice-advancecareplanningguide.pdf>
45. <https://www2.gov.bc.ca/gov/content/family-social-supports/seniors/health-safety/advance-care-planning>
46. <http://www.bccancer.bc.ca/managing-symptoms-site/Documents/When-Life-Nearing-its-End.pdf>
47. <http://www.bccancer.bc.ca/new-patients-site/Documents/ACP-tips-for-oncology-professionals.pdf>
48. <http://www.phsa.ca/health-professionals/professional-resources/language-services/translation>
49. <http://www.bccancer.bc.ca/our-services/services/library>