

Primary Care Practitioners
(Family Practice)

Indigenous Cancer Care

Supportive Care

(Counselling, Psychiatry, Nutrition, Speech Language Pathology, Physiotherapy, Pain & Symptom Management/Palliative Care)

This figure represents a general pathway of care that most people with cancer will experience. It shows

- The major phases of a cancer journey
- How a person might progress through each phase
- Key supportive services that are available throughout each person's cancer journey

Please visit the [Clinical Pathways Web](#) page for

- Tumour Group Clinical Pathways
- Patient Companion Guide
- Methodology Reports

Target Population

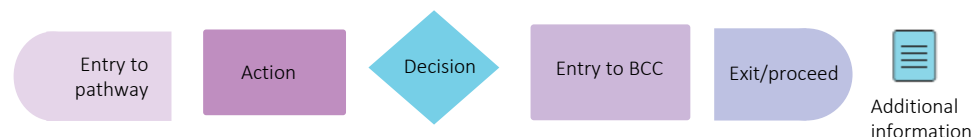
The target population for this pathway include health care providers such as primary care practitioners, oncologists, specialists, nurses, and other members of a health care team including allied health providers. Healthcare administrators across BC Cancer and the health authorities may also benefit from this resource for systems and operational planning.

Pathway Disclaimer

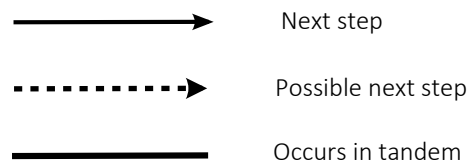
This pathway is an informational resource, intended to provide a high-level overview of the treatment journey a patient in British Columbia may receive. This pathway is not a substitute for medical advice and clinical judgment is still required as not all care trajectories will follow the proposed steps outlined in the pathway. This resource may not reflect all available evidence as research continues to evolve rapidly and BC Cancer is not responsible for any incomplete information. Furthermore, BC Cancer and those involved in developing this pathway are not liable for any incidental or consequential outcomes related to the information in this pathway. Anyone using the information provided in this pathway does so at their own risk.

Pathway Map Legend

Shape Guide



Line Guide



Pathway Map Considerations

This pathway is intended as a high-level resource and therefore does not include specific recommendations on specific systemic therapy protocols or radiation therapy doses. Instead, additional information can be sought via the inserted hyperlinks to resources that may aid a clinician in their treatment planning. The level of detail for each pathway was guided by the tumor group lead and intentionally kept high-level and represents the overall ideal pathway of care for a patient in general. Each patient will have individual needs and each cancer centre may have variation in the way care is delivered, but overall the intent was to represent the pathway that the majority of patients will follow.

General Resources

Indigenous Patient Navigator Referral Form(1): <http://www.phsa.ca/aboriginal-health-site/Documents/IPN%20Fillable%20Referral%20Form.pdf>
Supportive Care(2): <http://www.bccancer.bc.ca/our-services/services/supportive-care>
Compassionate Access Program(CAP) (3): <https://cap.phsa.ca/>
Skin Chemotherapy Protocols(4): <http://www.bccancer.bc.ca/health-professionals/clinical-resources/chemotherapy-protocols/skin-melanoma>
Manufacturer Patient Assistance Programs(5): <http://www.bccancer.bc.ca/systemic-therapy-site/Documents/Policy%20and%20Forms/Patient%20assistance%20programs.pdf>
BC Cancer Research Clinical Trials(6): <https://www.bccrc.ca/dept/cid/clinical-trials>
Smoking Cessation Program(7): <http://www.bccancer.bc.ca/health-professionals/clinical-resources/smoking-cessation-program>
Alcohol Reduction(8): <http://www.bccancer.bc.ca/prevent/alcohol/reduce-your-risk>
MDC Referral Form(9): <http://www.bccancer.bc.ca/books/Documents/Clinical%20Care%20Pathways/Patient%20Conference%20Order.pdf>
Pharmacy Contact Info(10): <http://www.bccancer.bc.ca/health-professionals/clinical-resources/pharmacy#Contact--info>
Language & Translation Services(53): <http://www.phsa.ca/health-professionals/professional-resources/language-services/translation>

Abbreviations

BCC: Basal Cell Carcinoma
BRAF: V-Raf Murine Sarcoma Viral Oncogene Homolog B
CLND: Complete Lymph Node Dissection
ENT: Ear, Nose and Throat
FNA: Fine Needle Aspiration
H&N: Head & Neck
LDH: Lactate Dehydrogenase
MCC: Merkel Cell Carcinoma
MDC: Multidisciplinary Conference/Discussion
MRP: Most Responsible Provider
PCP: Primary Care Provider
PFC: Patient & Family Counseling
PSMPC: Pain & Symptom Management & Palliative Care

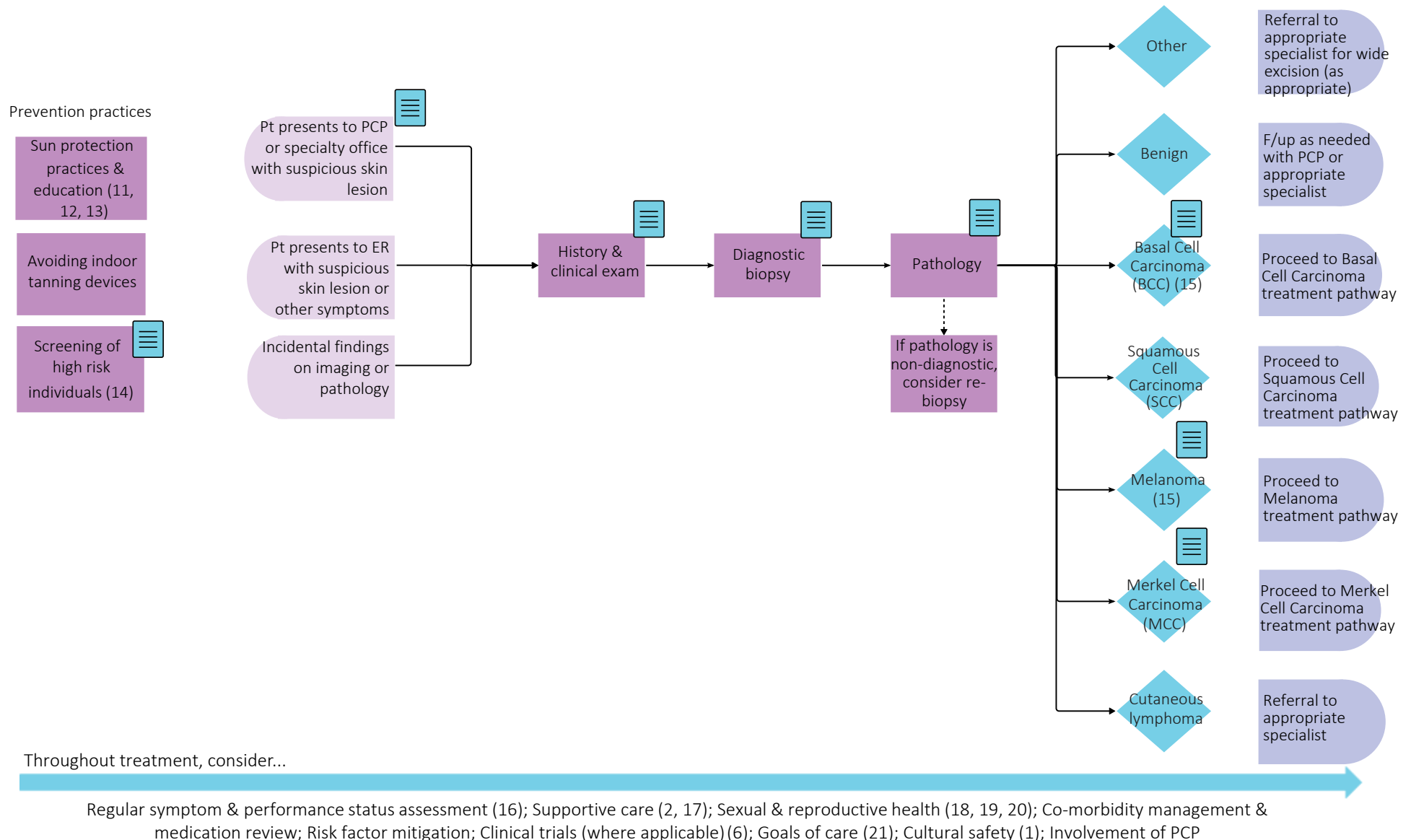
RT: Radiation Therapy
SCC: Squamous Cell Carcinoma
SLNB: Sentinel Lymph Node Biopsy
ST: Systemic Therapy

Additional Information

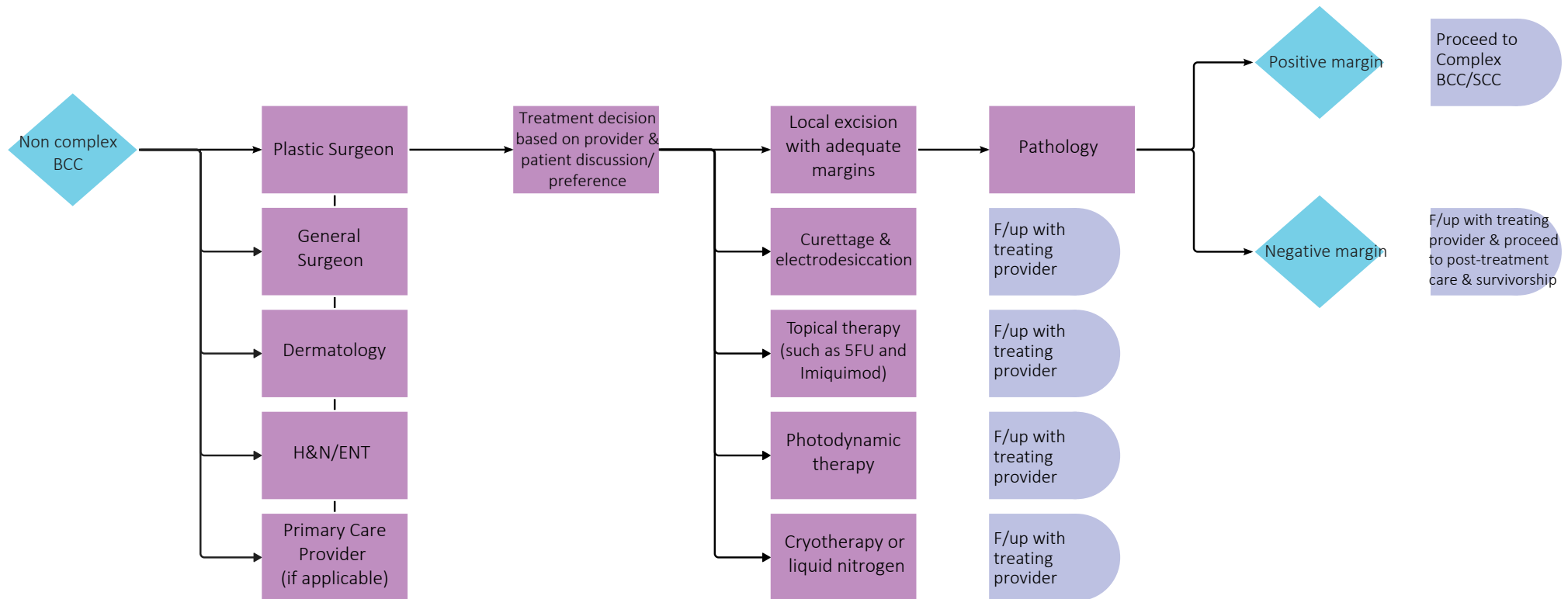
To learn more about how the Clinical Care Pathways are developed, visit the [Methodology Report](#).

Other Tumour Group Clinical Care Pathways can be found on the [BC Cancer Website](#).

Pre-Diagnosis & Diagnosis



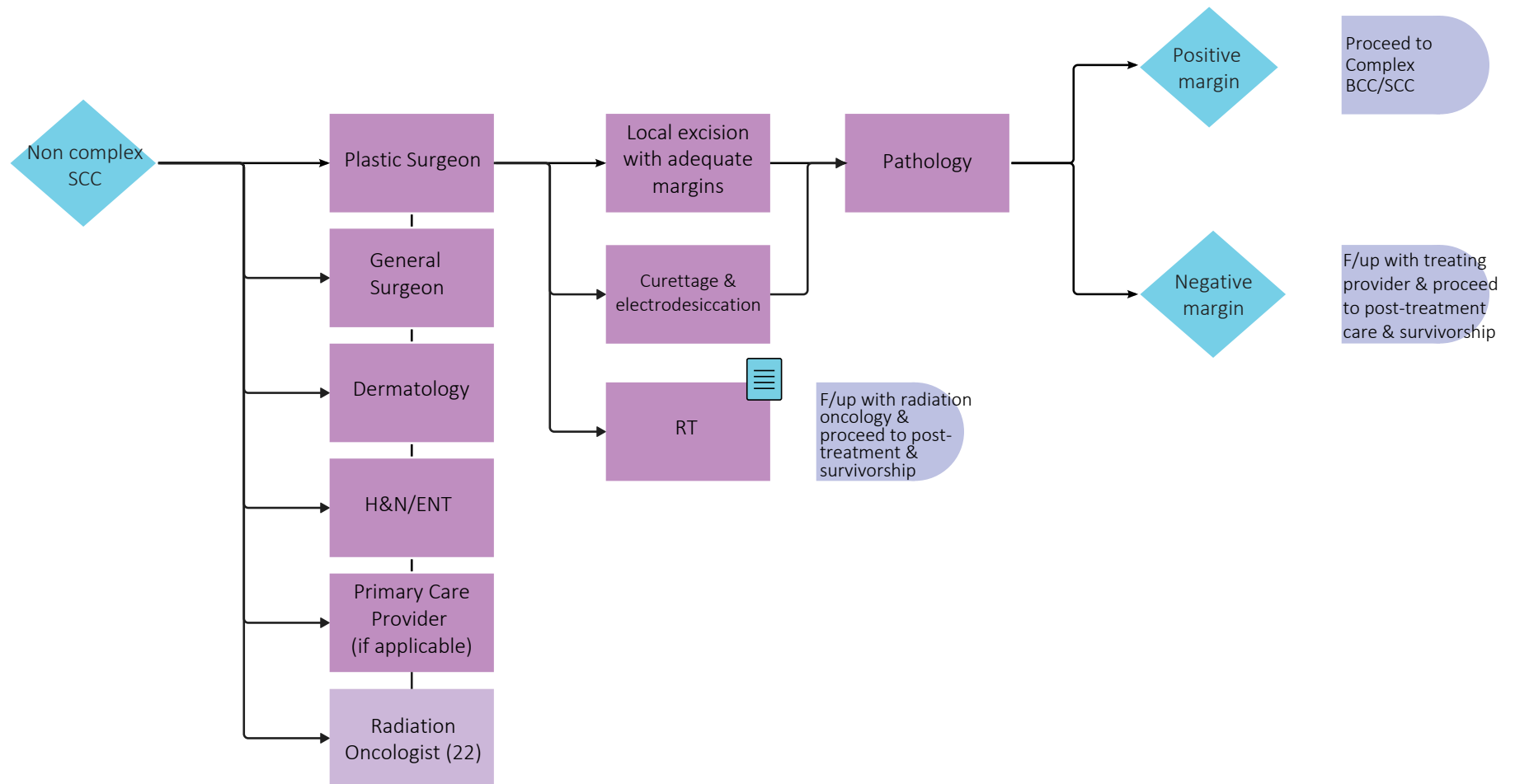
Invasive Basal Cell Carcinoma (BCC) or Squamous Cell Carcinoma (SCC) (Pg. 1)



Throughout treatment, consider...

Regular symptom & performance status assessment (16); Supportive care (2, 17); Sexual & reproductive health (18, 19, 20); Co-morbidity management & medication review; Risk factor mitigation; Clinical trials (where applicable) (6); Goals of care (21); Cultural safety (1); Involvement of PCP

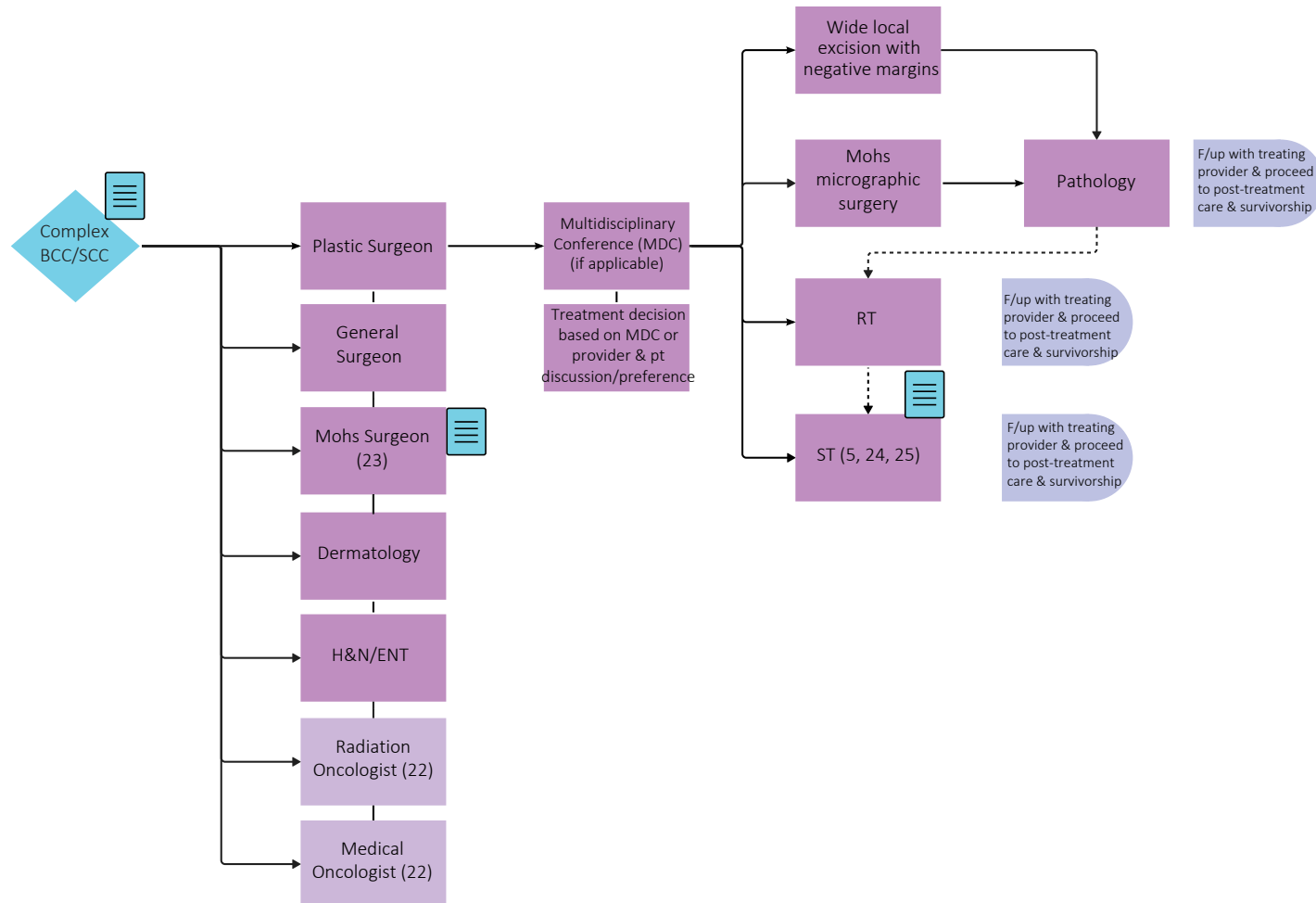
Invasive Basal Cell Carcinoma (BCC) or Squamous Cell Carcinoma (SCC) (Pg. 2)



Throughout treatment, consider...

Regular symptom & performance status assessment (16); Supportive care (2, 17); Sexual & reproductive health (18, 19, 20); Co-morbidity management & medication review; Risk factor mitigation; Clinical trials (where applicable)(6); Goals of care (21); Cultural safety (1); Involvement of PCP

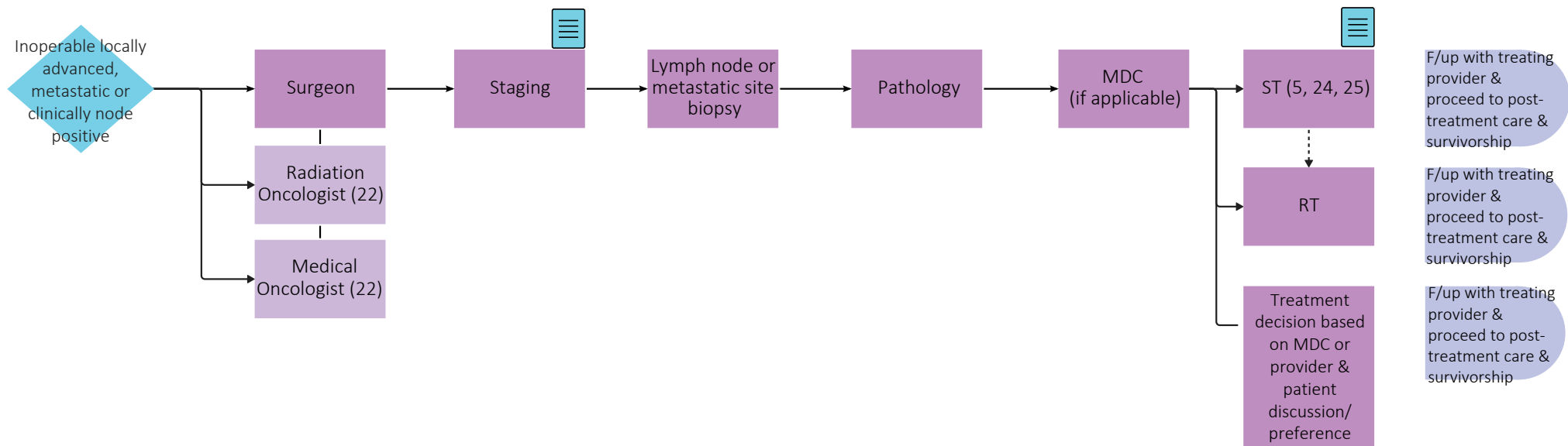
Invasive Basal Cell Carcinoma (BCC) or Squamous Cell Carcinoma (SCC) (Pg. 3)



Throughout treatment, consider...

Regular symptom & performance status assessment (16); Supportive care (2, 17); Sexual & reproductive health (18, 19, 20); Co-morbidity management & medication review; Risk factor mitigation; Clinical trials (where applicable) (6); Goals of care (21); Cultural safety (1); Involvement of PCP

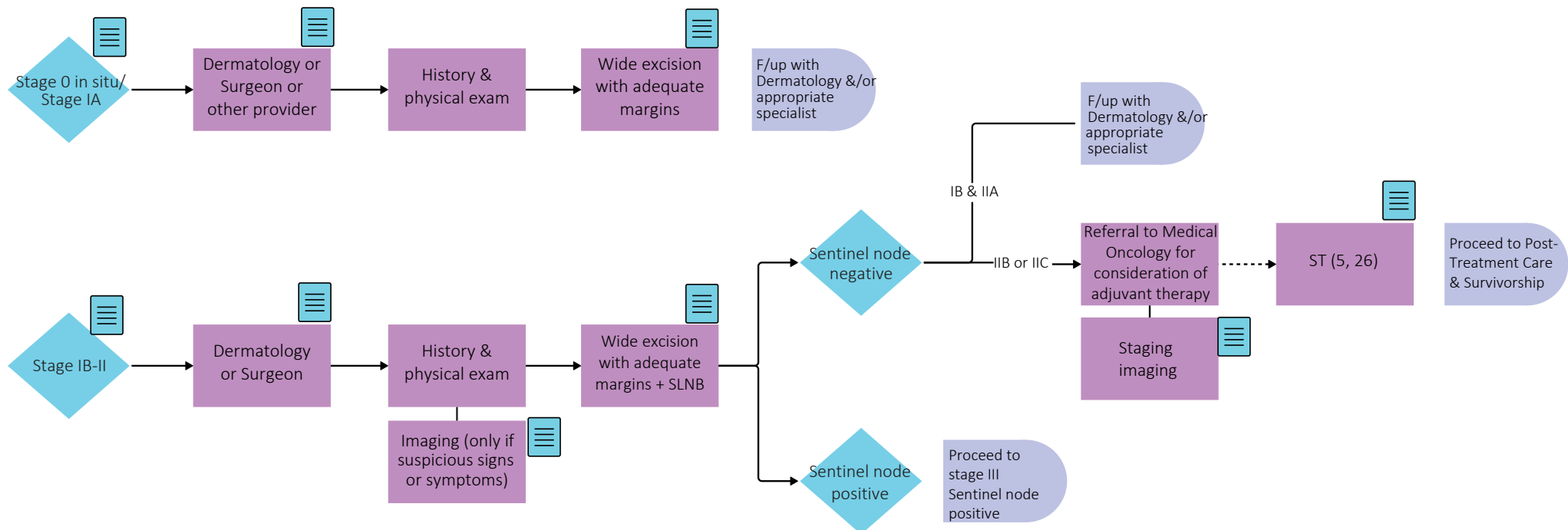
Invasive Basal Cell Carcinoma (BCC) or Squamous Cell Carcinoma (SCC) (Pg. 4)



Throughout treatment, consider...

Regular symptom & performance status assessment (16); Supportive care (2, 17); Sexual & reproductive health (18, 19, 20); Co-morbidity management & medication review; Risk factor mitigation; Clinical trials (where applicable)(6); Goals of care (21); Cultural safety (1); Involvement of PCP

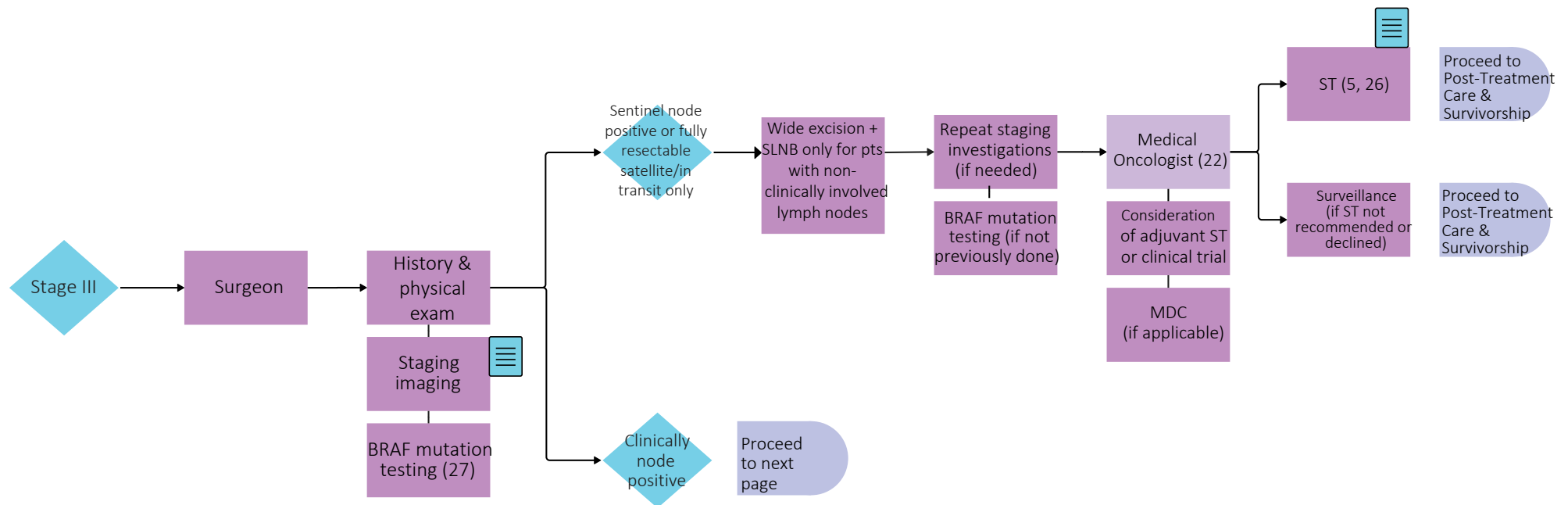
Cutaneous Melanoma (Pg. 1)



Throughout treatment, consider...

Regular symptom & performance status assessment (16); Supportive care (2, 17); Sexual & reproductive health (18, 19, 20); Co-morbidity management & medication review; Risk factor mitigation; Clinical trials (where applicable)(6); Goals of care (21); Cultural safety (1); Involvement of PCP

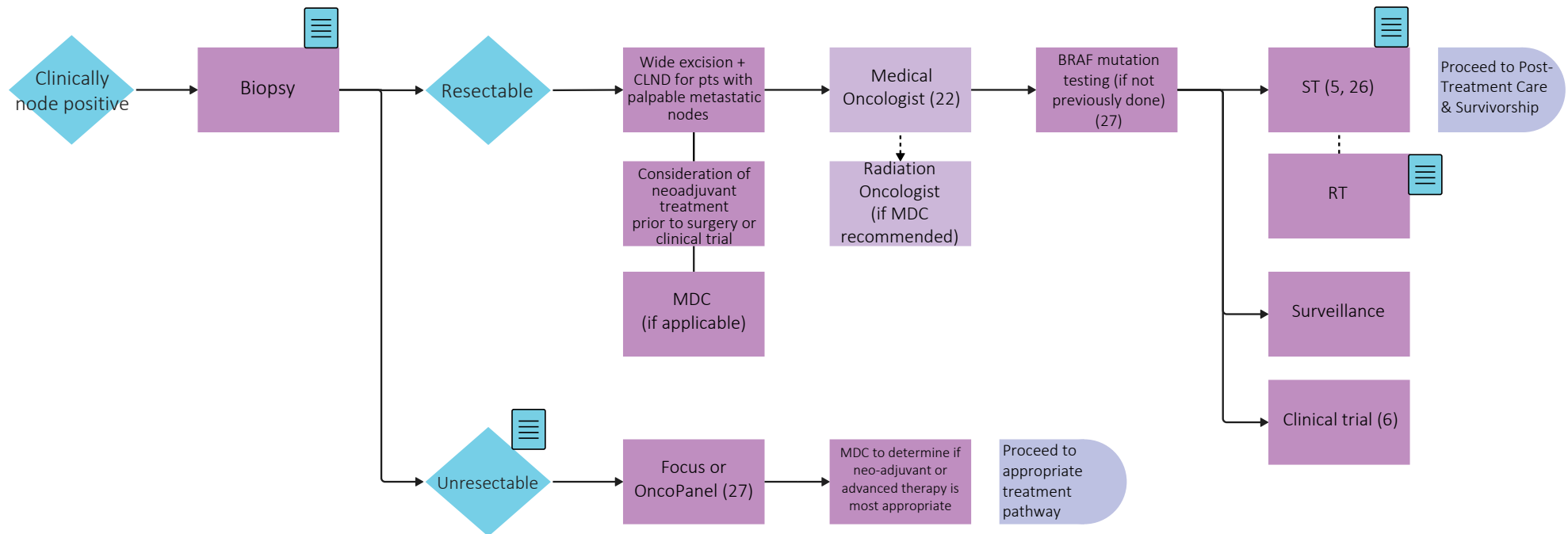
Cutaneous Melanoma(Pg. 2)



Throughout treatment, consider...

Regular symptom & performance status assessment (16); Supportive care (2, 17); Sexual & reproductive health (18, 19, 20); Co-morbidity management & medication review; Risk factor mitigation; Clinical trials (where applicable)(6); Goals of care (21); Cultural safety (1); Involvement of PCP

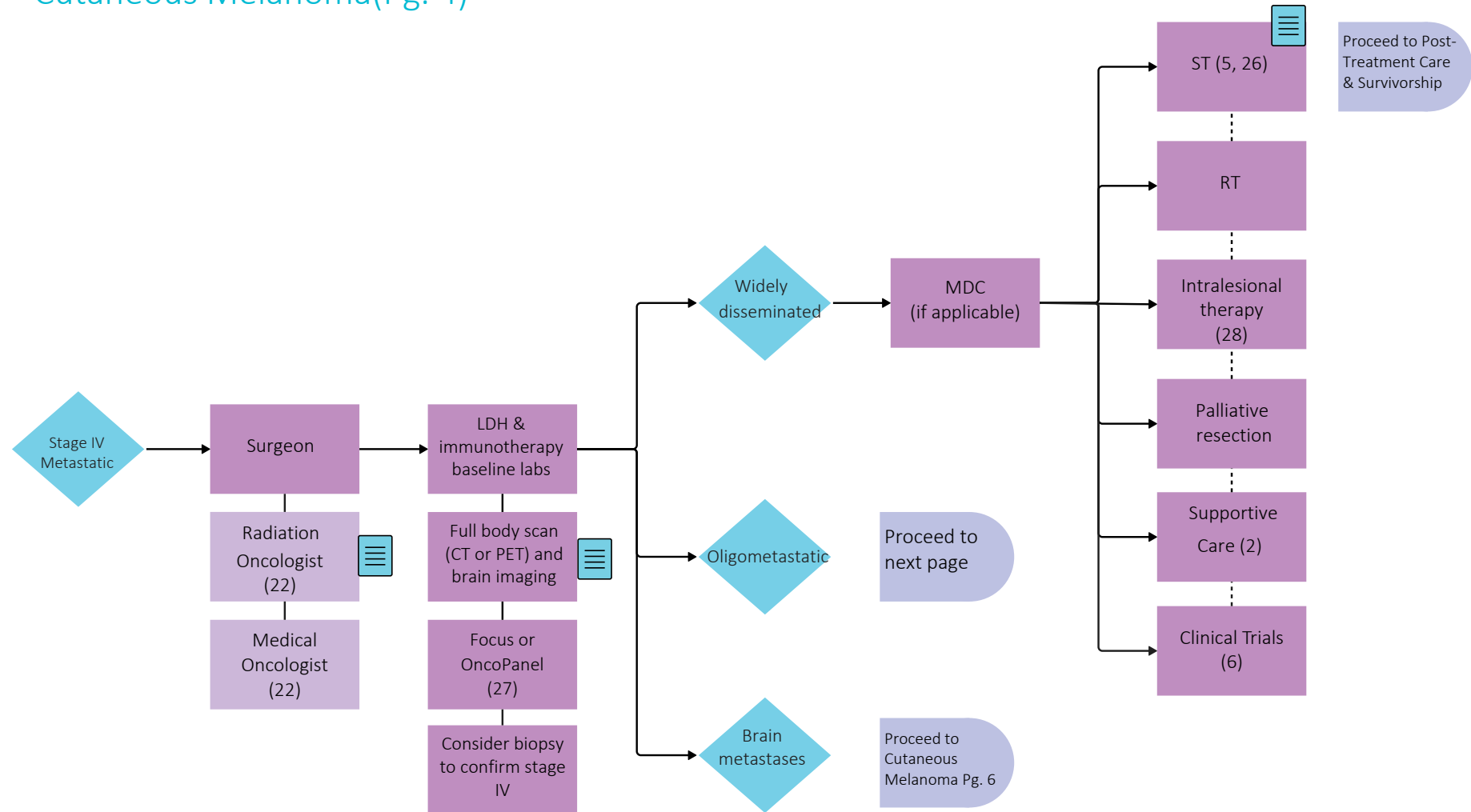
Cutaneous Melanoma(Pg. 3)



Throughout treatment, consider...

Regular symptom & performance status assessment (16); Supportive care (2, 17); Sexual & reproductive health (18, 19, 20); Co-morbidity management & medication review; Risk factor mitigation; Clinical trials (where applicable)(6); Goals of care (21); Cultural safety (1); Involvement of PCP

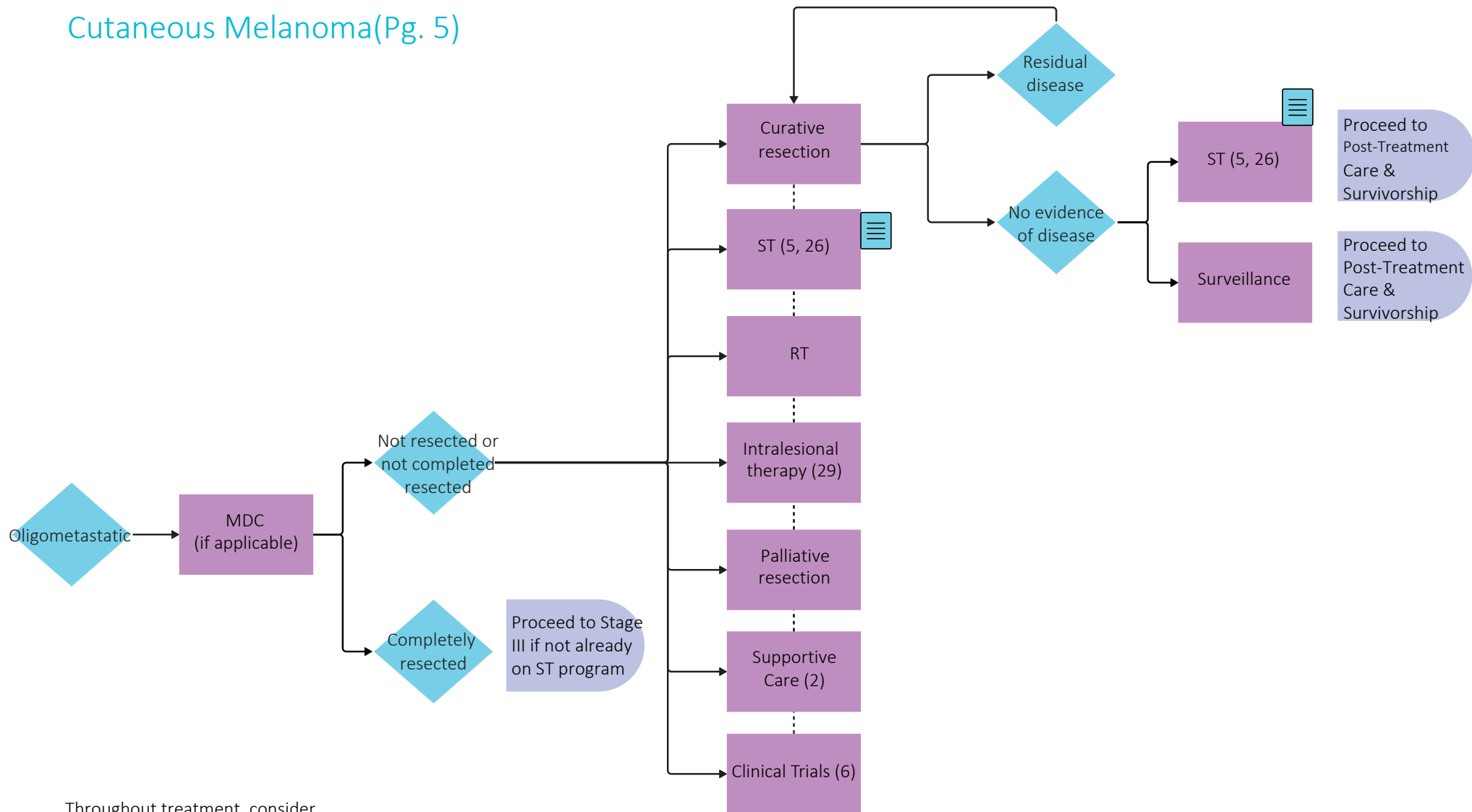
Cutaneous Melanoma(Pg. 4)



Throughout treatment, consider...

Regular symptom & performance status assessment (16); Supportive care (2, 17); Sexual & reproductive health (18, 19, 20); Co-morbidity management & medication review; Risk factor mitigation; Clinical trials (where applicable)(6); Goals of care (21); Cultural safety (1); Involvement of PCP

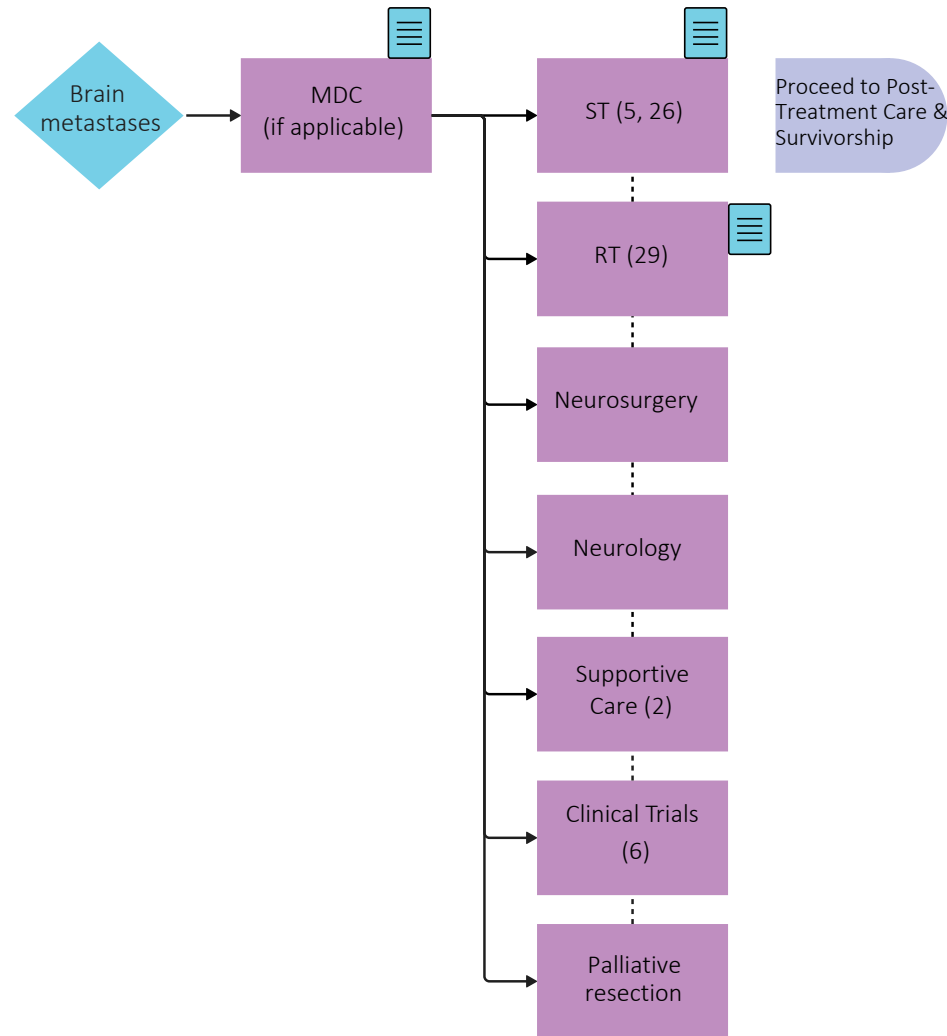
Cutaneous Melanoma(Pg. 5)



Throughout treatment, consider...

Regular symptom & performance status assessment (16); Supportive care (2, 17); Sexual & reproductive health (18, 19, 20); Co-morbidity management & medication review; Risk factor mitigation; Clinical trials (where applicable)(6); Goals of care (21); Cultural safety (1); Involvement of PCP

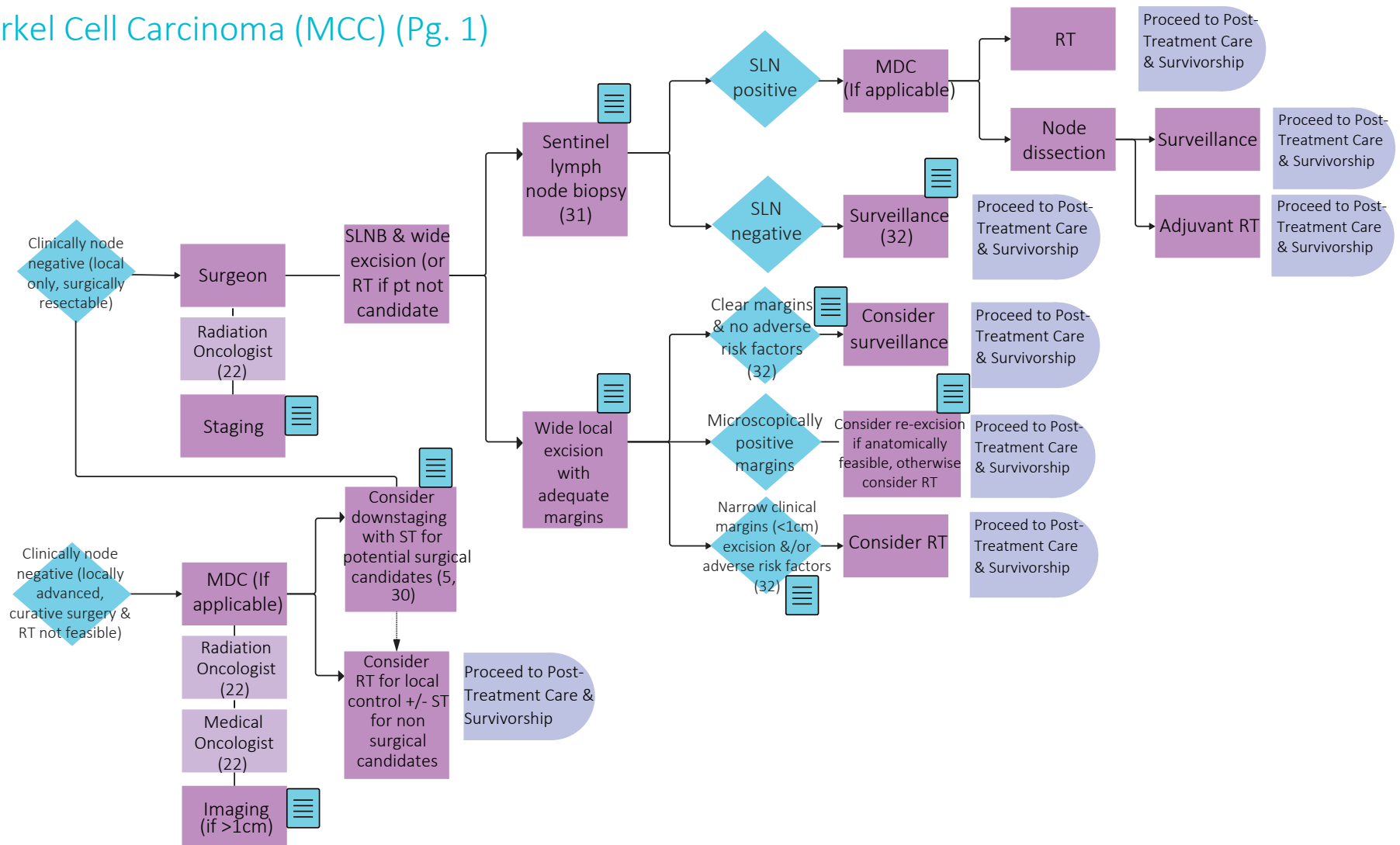
Cutaneous Melanoma(Pg. 6)



Throughout treatment, consider...

Regular symptom & performance status assessment (16); Supportive care (2, 17); Sexual & reproductive health (18, 19, 20); Co-morbidity management & medication review; Risk factor mitigation; Clinical trials (where applicable)(6); Goals of care (21); Cultural safety (1); Involvement of PCP

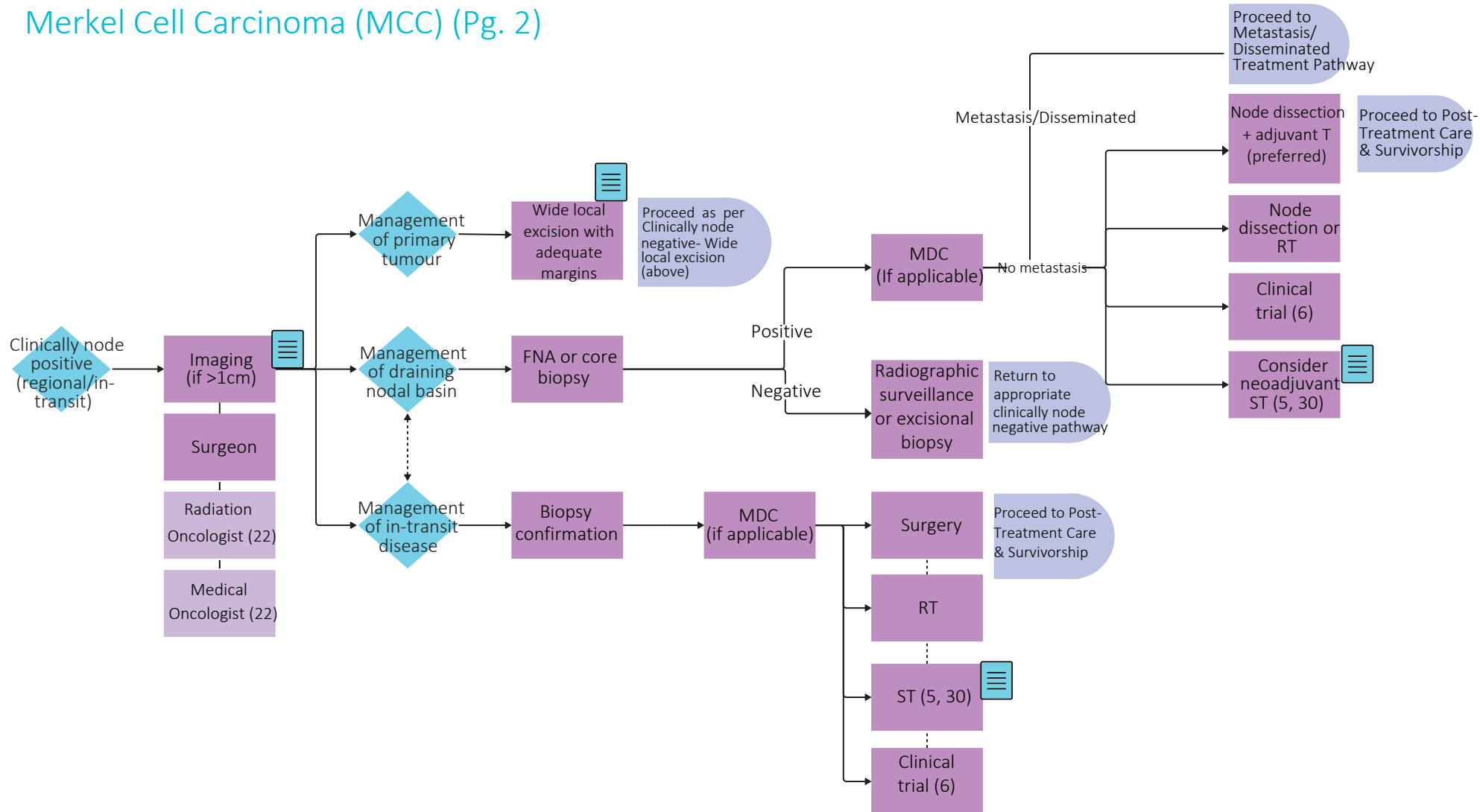
Merkel Cell Carcinoma (MCC) (Pg. 1)



Throughout treatment, consider...

Regular symptom & performance status assessment (16); Supportive care (2, 17); Sexual & reproductive health (18, 19, 20); Co-morbidity management & medication review; Risk factor mitigation; Clinical trials (where applicable)(6); Goals of care (21); Cultural safety (1); Involvement of PCP

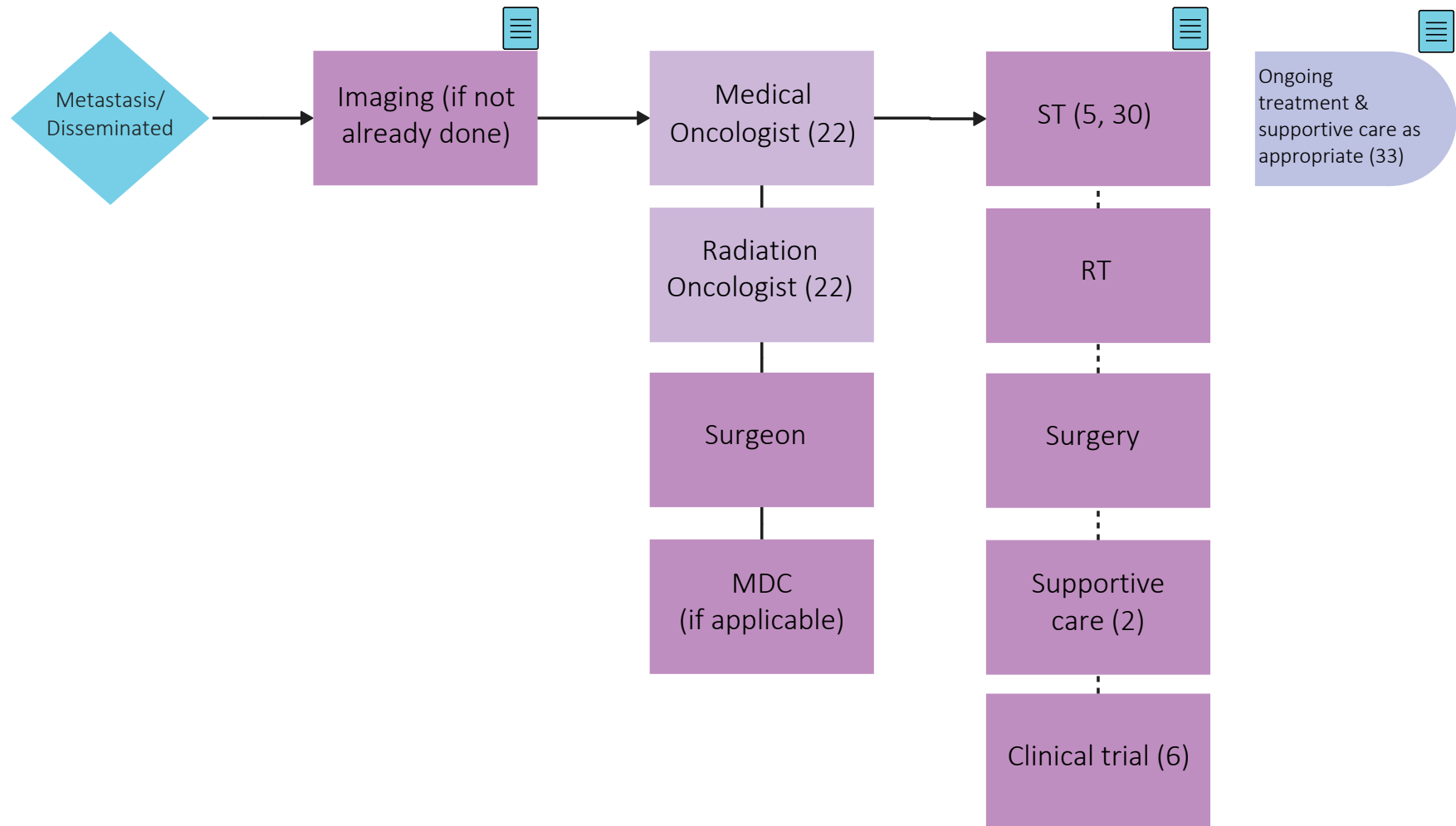
Merkel Cell Carcinoma (MCC) (Pg. 2)



Throughout treatment, consider...

Regular symptom & performance status assessment (16); Supportive care (2, 17); Sexual & reproductive health (18, 19, 20); Co-morbidity management & medication review; Risk factor mitigation; Clinical trials (where applicable) (6); Goals of care (21); Cultural safety (1); Involvement of PCP

Merkel Cell Carcinoma (MCC) (Pg. 3)

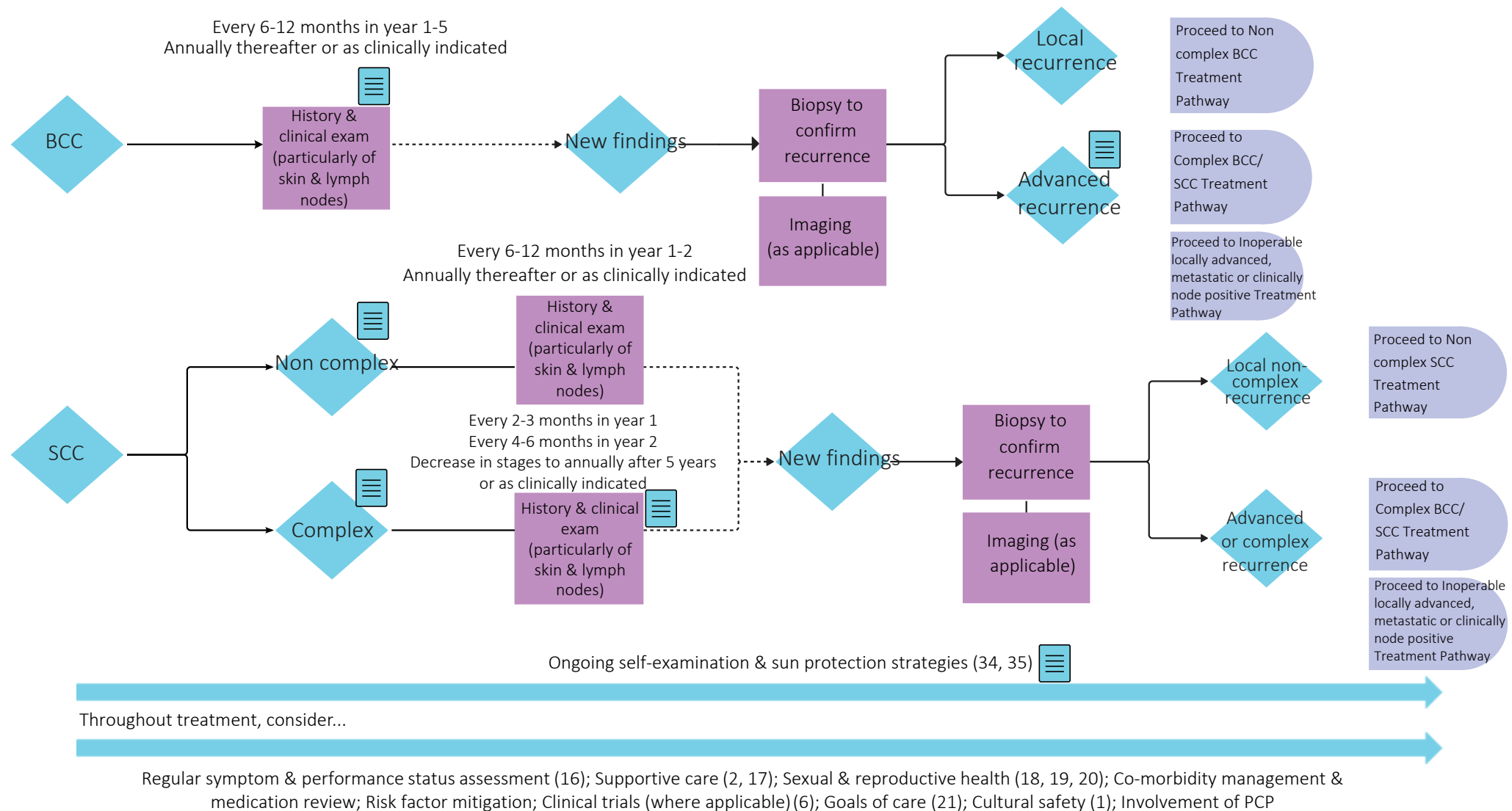


Throughout treatment, consider...

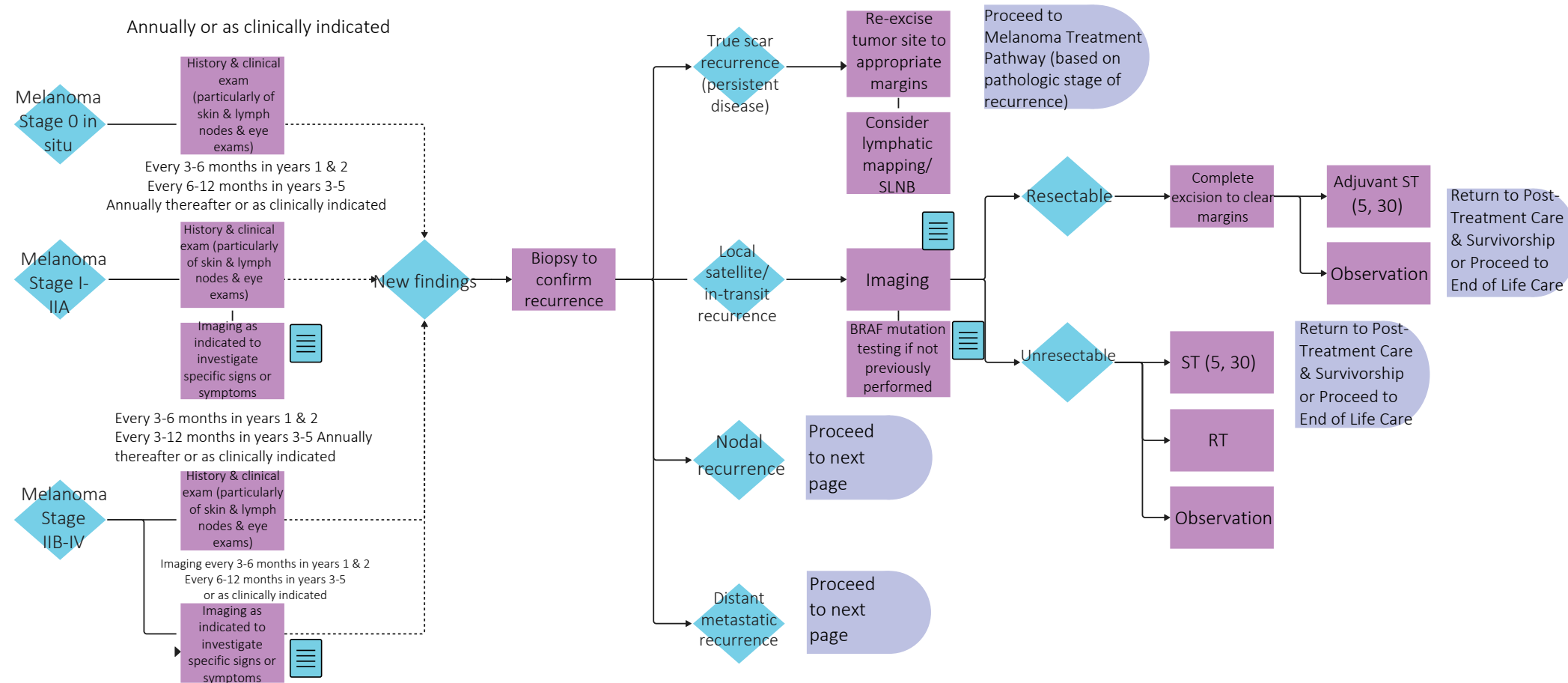
Regular symptom & performance status assessment (16); Supportive care (2, 17); Sexual & reproductive health (18, 19, 20); Co-morbidity management & medication review; Risk factor mitigation; Clinical trials (where applicable) (6); Goals of care (21); Cultural safety (1); Involvement of PCP

Post-Treatment Care & Survivorship/Recurrent & Progressive Disease (pg. 1)

*All follow-up care should be completed by appropriate specialist or PCP



Post-Treatment Care & Survivorship/Recurrent & Progressive Disease (pg. 2)

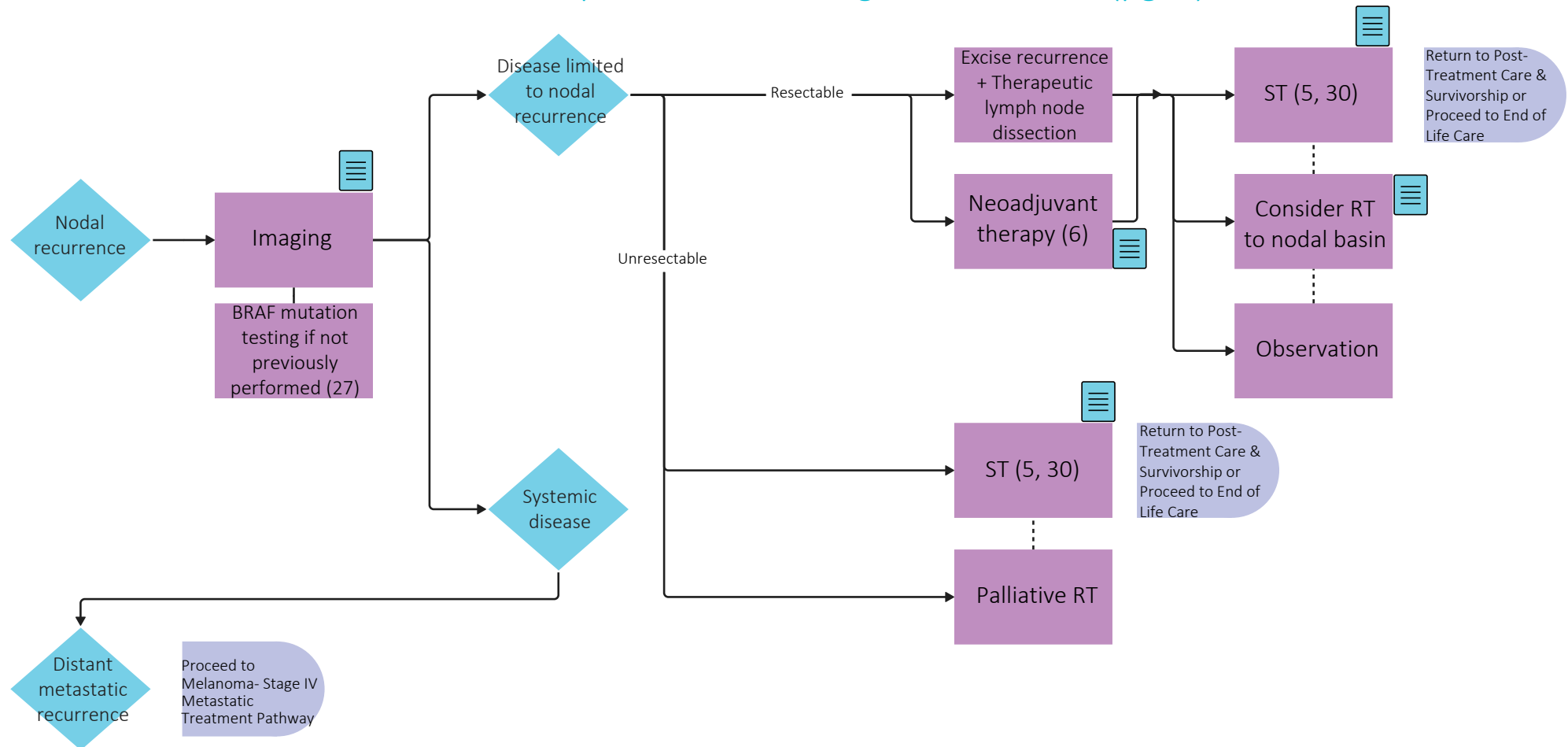


Ongoing self-examination & sun protection strategies (34, 35)

Throughout treatment, consider...

Regular symptom & performance status assessment (16); Supportive care (2, 17); Sexual & reproductive health (18, 19, 20); Co-morbidity management & medication review; Risk factor mitigation; Clinical trials (where applicable) (6); Goals of care (21); Cultural safety (1); Involvement of PCP

Post-Treatment Care & Survivorship/Recurrent & Progressive Disease (pg. 3)

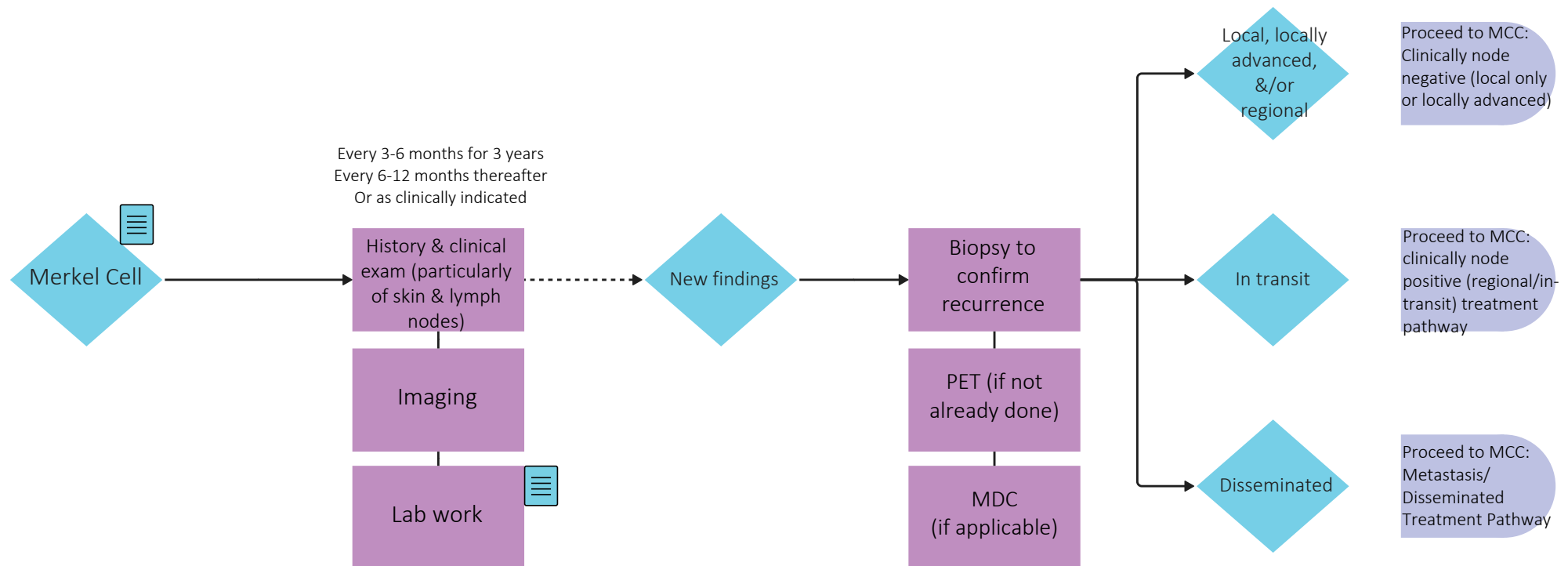


Ongoing self-examination & sun protection strategies (34, 35)

Throughout treatment, consider...

Regular symptom & performance status assessment (16); Supportive care (2, 17); Sexual & reproductive health (18, 19, 20); Co-morbidity management & medication review; Risk factor mitigation; Clinical trials (where applicable) (6); Goals of care (21); Cultural safety (1); Involvement of PCP

Post-Treatment Care & Survivorship/Recurrent & Progressive Disease (pg. 4)

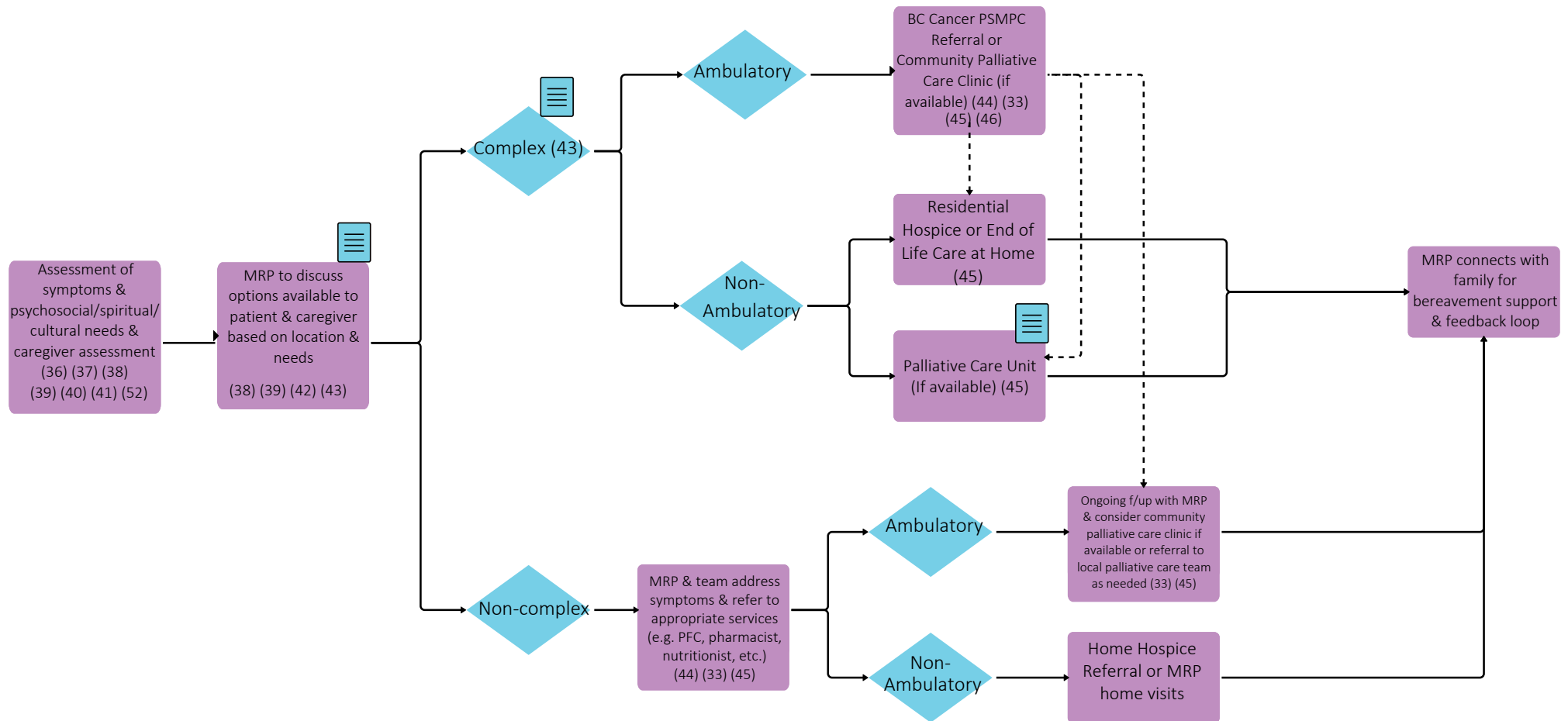


Ongoing self-examination & sun protection strategies (34, 35)

Throughout treatment, consider...

Regular symptom & performance status assessment (16); Supportive care (2, 17); Sexual & reproductive health (18, 19, 20); Co-morbidity management & medication review; Risk factor mitigation; Clinical trials (where applicable)(6); Goals of care (21); Cultural safety (1); Involvement of PCP

End of Life Care



Throughout treatment, consider...

Goals of Care Discussions & Consideration of Cultural Safety (1, 42, 43, 47, 48, 49, 50, 51)

Subject Matter Expert Working Group & COIs

Vanessa Bernstein, Project Lead, Medical Oncologist
COI Pending

Catherine Clelland, Family Physician
No disclosures

Vincent Ho, Dermatologist
No disclosures

Jinesa Moodley, Pathologist
No disclosures

Eitan Prisman, Surgeon
No disclosures

Heather Stuart, Surgeon
No disclosures

Ning Su, Radiologist
No disclosures

Alison Weppler, Medical Oncologist
Merck, Bristol Myers Squibb, Medison, Sanofi, Novartis, ACUMEN

Tina Zhang, Radiation Oncologist
No disclosures

Pathway Program Team

Bhatia, Yashpal Tumour Group Coordinator, Provincial Programs
Currie, Tammy Executive Director, Provincial Programs
Ladak, Amilya Policy Analyst, Tumour Groups
Loudon, James Director, Provincial Programs
Nanji, Shaifa Manager, Tumour Groups
Simmons, Christine Tumour Group Council Chair
Wai, Elaine Senior Executive Director, Medical Affairs and Quality

Other Stakeholders

Family Practice & GPO
 Indigenous Cancer Control
 Nursing Community of Practice (NCoP)
 Patient and Family Experience Team & Supportive Care
 Radiation Therapists
 Surgical Oncology Network
 Provincial Pharmacy, Pathology & Medical Imaging Teams

- 24

Appendix

37. https://www2.gov.bc.ca/assets/gov/health/practitioner-pro/bc-guidelines/palliative1_appendix_a.pdf
38. <https://www.bc-cpc.ca/publications/symptom-management-guidelines/>
39. <https://www2.gov.bc.ca/gov/content/health/practitioner-professional-resources/bc-guidelines/palliative-care>
40. <https://www2.gov.bc.ca/gov/content/health/practitioner-professional-resources/pharmacare/prescribers/plan-p-bc-palliative-care-benefits-program>
41. <http://www.bccancer.bc.ca/our-services/services/indigenous-cancer-control>
42. <http://www.bccancer.bc.ca/new-patients-site/Documents/SeriousIllnessConversationGuideCard.pdf>
43. <http://www.phsa.ca/health-info/medical-assistance-in-dying>
44. <http://www.bccancer.bc.ca/managing-symptoms-site/Documents/PSMPC-Referral-Form-for-All-BC-Cancer-Centres.pdf>
45. https://vancouver.pathwaysbc.ca/service_categories/24
46. http://www.bccancer.bc.ca/new-patients-site/Documents/MIPPC_Referral_Form.pdf
47. <http://www.bccancer.bc.ca/new-patients-site/Documents/Goals%20of%20Care%20Orders%20Form%20June%202018%20Final.pdf>
48. <https://www2.gov.bc.ca/assets/gov/people/seniors/health-safety/pdf/myvoice-advancecareplanningguide.pdf>
49. <https://www2.gov.bc.ca/gov/content/family-social-supports/seniors/health-safety/advance-care-planning>
50. <http://www.bccancer.bc.ca/managing-symptoms-site/Documents/When-Life-Nearing-its-End.pdf>
51. <http://www.bccancer.bc.ca/new-patients-site/Documents/ACP-tips-for-oncology-professionals.pdf>
52. <http://www.bccancer.bc.ca/books/Documents/Clinical%20Care%20Pathways/Revised%20PSMPC%20Questionnaire%20Pink%20Form%202020-21.pdf>
53. <http://www.phsa.ca/health-professionals/professional-resources/language-services/translation>