



CANCER CARE RESOURCE GEMS

DR. RAZIYA MIA
DR. SIAN SHUEL
NOVEMBER 23, 2019

Disclosures

- Dr. Raziya Mia
 - None

- Dr. Sian Shuel
 - None



Learning Objectives

Participants will be able to:

- Appreciate and identify the wealth of available physician resources for cancer care;
- Navigate the BC Cancer Website effectively from a physician's perspective; and
- Share these resources and tips with their medical colleagues.



Google BC Cancer

BC Cancer

www.bccancer.bc.ca ▼

Provincial Health Services Authority (PHSA) improves the health of British Columbians by seeking province-wide solutions to specialized health care needs in ...

Results from bccancer.bc.ca



Chemotherapy Protocols

Gastrointestinal - Breast -
Lymphoma & Myeloma - Lung

Cancer Drug Manual

The Cancer Drug Manual®
provides concise, evaluative ...

BC Cancer – Vancouver

One of BC Cancer's six regional
care centres, BC Cancer ...

Health Professionals

Chemotherapy Protocols - Cancer
Drug Manual - Referrals - ...

Careers

Work with Us - Volunteer with Us -
Our Training Programs - Faculty

Contact

Please take a moment to review
the information here and then ...

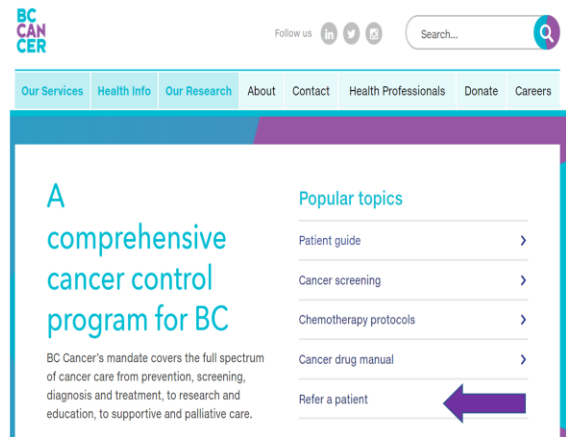


BC Cancer Home Page: <http://www.bccancer.bc.ca/>

- On results page can link directly to Health Professionals, Chemotherapy Protocols, and Cancer Drug Manual.

BC Cancer

- General Guidelines
 - Important information to forward
- Urgent Referral Information
- Contact Information for BC Cancer Sites

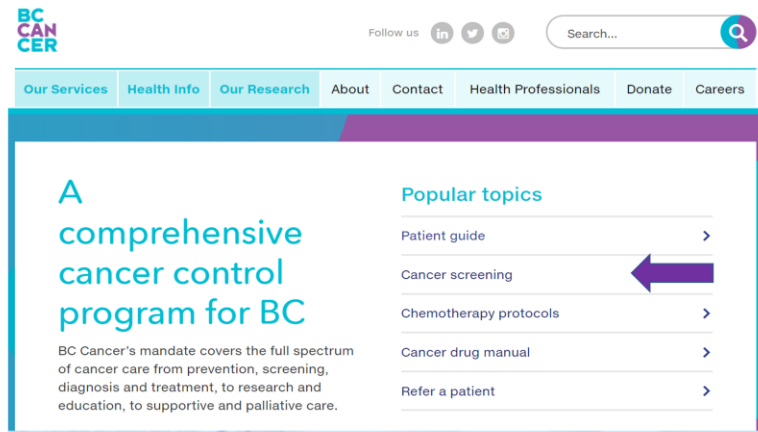


BC Cancer Home Page: <http://www.bccancer.bc.ca/>

Patient Referral Information: <http://www.bccancer.bc.ca/health-professionals/referrals>

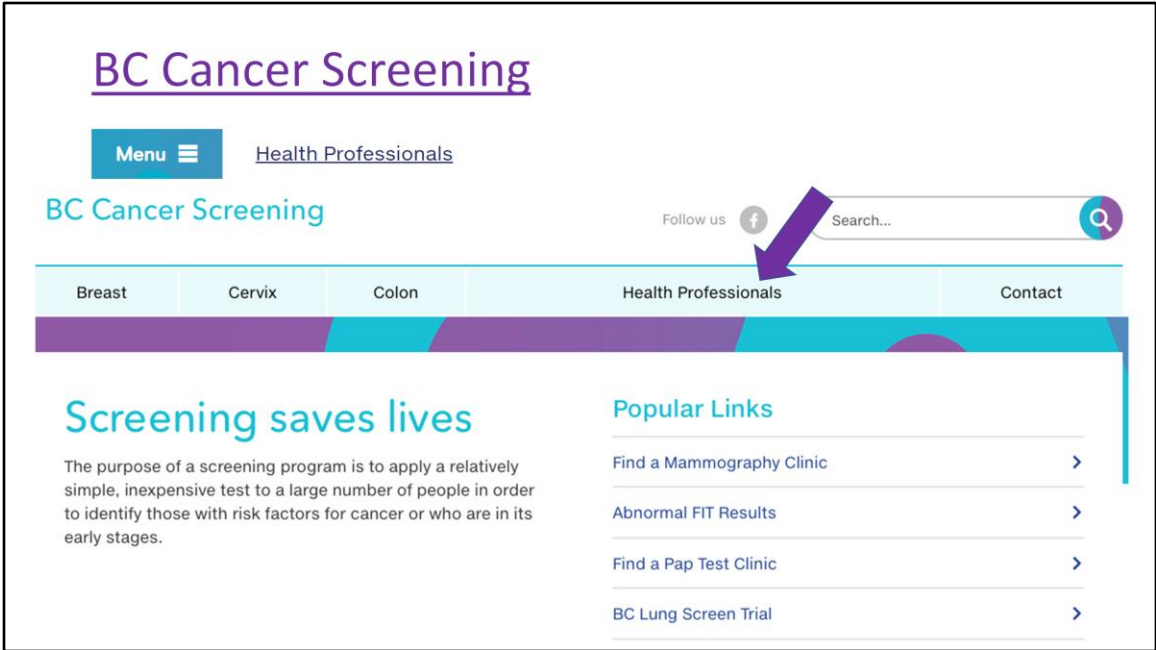
- Urgent contact information can be found for each Cancer Centre on referral form and under Urgent tab

BC Cancer



BC Cancer Screening: <http://www.bccancer.bc.ca/screening>

- *Information on established screening programs – Breast/Cervix/Colon*
- *Also on Screening for other cancers in BC: Lung/Oral/Prostate/Skin*



BC Cancer Screening: <http://www.bccancer.bc.ca/screening>

Health Professionals/Screening: <http://www.bccancer.bc.ca/screening/health-professionals>

- *Excellent Resource for the 3 major established screening programs*

Breast Cancer Screening

Menu ☰

Health Professionals / Breast / Resources

- Ms. LC - 52 year old female
- Wants advice regarding screening mammography
- Sister age 54 recently diagnosed with Breast Cancer
- Mammogram 14 months ago, with no previous abnormalities
- No history of breast masses or biopsies
- Negative physical examination

Breast

Resources

Eligibility

Guidance

[Breast Cancer Screening Decision Aid Tool](#)

Breast Resource: <http://www.bccancer.bc.ca/screening/health-professionals/breast/resources>

Breast Cancer Screening Decision Aid Tool : <http://decisionaid.screeningbc.ca/>

- *Breast Cancer Screening Decision Aid Tool provides follow up Mammogram recommendations and statistical possible outcomes of next mammogram*

Breast Cancer Screening

Menu ☰

Health Professionals / Breast / Guidance

Ms. PA - 26 year old female

- Past history of Hodgkin Lymphoma
- Mantle Cell Radiation at age 17
- Should she have Breast Cancer Screening?

Breast

Resources >

Eligibility >

Guidance ←

Breast Cancer Screening Guidance: <http://www.bccancer.bc.ca/screening/health-professionals/breast/guidance>

Scroll down for current guidelines following *Mantle field radiation treatment for Hodgkin lymphoma*

- *A known risk factor for secondary breast cancer.*
- *Estimated incidence approaches 35% by 40 years of age, starting 10 years after treatment.*
- *Annual breast magnetic resonance imaging (MRI) starting at age 30 or 10 years after radiation treatment until the age of 65.*
- *Annual screening mammogram starting at age 30 or 10 years after radiation treatment until the age of 74.*

Breast Cancer Screening Decision Aid

Is Screening right for you?

Answer the following questions to determine what the probable results from your screening will be.

1.

How old are you?

If you are younger than age 40:

Screening mammograms are not recommended unless you have a known BRCA1 or BRCA2 mutation, prior chest wall radiation or strong family history of breast cancer. A doctor's referral is needed for every screen.

For more information on who is **eligible** for screening mammograms, please click [here](#).

26

Breast Cancer Screening Decision Aid Tool: <http://decisionaid.screeningbc.ca/>

- *For patients under 40, at Q2 screening guidelines for <40 years of age pops up, with links to eligibility*

Cervical Cancer Screening

Menu ☰

Health Professionals / Cervix / Guidance

Ms. GN - 34 year old female

- Asks your advice regarding HPV Testing for Cervical Cancer Screening
- Is willing to pay for this privately at Life Labs

Cervix

Resources	>
Eligibility	>
Guidance	←
Colposcopy	>
Colposcopy Clinic Locations	>



Cervical Cancer Screening/Guidance: <http://www.bccancer.bc.ca/screening/health-professionals/cervix/guidance>

HPV Testing Guidelines:

- *Scroll to Private Pay Primary HPV Testing Alogrithm*
- *Current BC cervix screening guidelines effectively prevent and detect cervical cancer*
- *Asymptomatic people with a cervix ages 25 to 69 living in BC; Pap q3years if at average risk of developing cervical cancer*
- *Screening is most effective when done regularly with coordinated follow-up; Currently BC Cancer Screening does not offer HPV screening*
- *HPV testing is not currently covered by MSP; Cost \$90/test*
- *Can detect transient HPV infections that will not cause pre-cancerous changes*
- *If Colposcopy recommended based on a cytology result, follow-up HPV testing not advised as result would not change the recommendation for colposcopy*
- *HPV testing has been approved for cervix screening and there are some jurisdictions who have introduced HPV testing as part of their cervix screening program*
- *In BC the Cervix Screening Program is exploring primary HPV screening for women ages 30 to 69 years old*

Colon Cancer Screening

Menu ☰

Health Professionals / Colon / Refer

Mr. SL - 52 year old male

- Requests colon cancer screening
 - Do you screen with FIT?
 - Do you screen with colonoscopy?

Colon

Resources >

Eligibility >

Refer ←

BC
CAN

Colon Cancer Screening/Refer: <http://www.bccancer.bc.ca/screening/health-professionals/colon/refer>

Average risk patients – fecal immunochemical test (FIT)

- Age 50-74, asymptomatic q2y using copy to 'BC Cancer Colon Screening' option.

Higher than average risk patients – screening colonoscopy using the Colonoscopy Referral Form to refer patients for screening colonoscopy.

- One first degree relative diagnosed with colorectal cancer diagnosed under the age of 60; or,
- Two or more first degree relatives with colorectal cancer diagnosed at any age; or,
- A personal history of adenoma(s).

Colon Cancer Screening

Menu ☰

Health Professionals / Colon / Eligibility

Mr. SL - 52 year old male

- What are colon cancer screening exclusion criteria?



The screenshot shows a navigation menu with the following items:

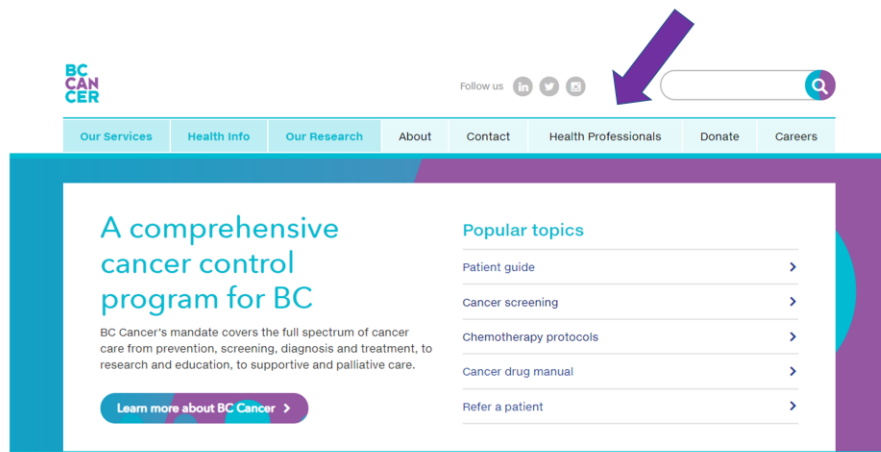
- Colon
- Resources >
- Eligibility ← (highlighted with a purple arrow)
- Refer >

Colon Cancer Screening/ Eligibility: <http://www.bccancer.bc.ca/screening/health-professionals/colon/eligibility>

Open Eligibility for Exclusion criteria

- *Up to date with colon screening*
 - *FIT in the preceding 2 years*
 - *Colonoscopy or flexible sigmoidoscopy in the preceding 10 years for average risk patients*
 - *Colonoscopy in the preceding 5 years for higher than average risk patients*
- *Personal history of colorectal cancer, ulcerative colitis, or Crohn's disease*
- *Symptomatic - should be referred for investigation and don't require FIT*
- *Individuals who are on a definite surveillance plan through a specialist*

HEALTH PROFESSIONALS



BC Cancer/Health Professionals: <http://www.bccancer.bc.ca/health-professionals>

Can also access Health Professionals directly on the Home Page

BC Cancer Health Professionals

Menu ☰

Health Professionals

Clinical Resources

Biosimilar Drugs >	Medical Cannabis >	Pharmacy >
Cancer Drug Manual >	Nursing >	Prevention Programs >
Cancer Management Guidelines >	Nutrition >	Psychosocial Oncology >
Chemotherapy Protocols >	Oral Cancer Prevention Program >	Skin Cancer Atlas >
Hereditary Cancer >	Pain & Symptom Management/Palliative Care >	Survivorship & Primary Care >
Laboratory Services >	PET Functional Imaging >	Systemic Therapy >
Late Effects, Assessment & Follow Up >		

BC Cancer/Health Professionals: <http://www.bccancer.bc.ca/health-professionals>

Link to Health Professionals to find a wealth of information on many topics

BC Cancer – Drug Manual

Menu ☰

Health Professionals / Clinical Resources / Cancer Drug Manual

- Comprehensive Information about all available Cancer Drugs in BC
- Useful Patient Information handouts
- Helpful for side effect information

Clinical Resources

Biosimilar Drugs	>
Cancer Drug Manual	←
Cancer Management Guidelines	>



Cancer Drug Manual: <http://www.bccancer.bc.ca/health-professionals/clinical-resources/cancer-drug-manual>

BC Cancer – Chemotherapy Protocols

Menu ☰

Health Professionals / Clinical Resources / [Chemotherapy Protocols](#)

- Quick link for GPO's who use these protocols regularly
- Also found on BC Cancer Search Page
- Useful for GPs if patients (or family members!) ask questions

Cancer Management Guidelines

Chemotherapy Protocols



Hereditary Cancer



Chemotherapy Protocols: <http://www.bccancer.bc.ca/health-professionals/clinical-resources/chemotherapy-protocols>

BC Cancer – Hereditary Cancer

Menu ☰

Health Professionals / Clinical Resources / [Hereditary Cancer](#)

Hereditary Breast* and/or Ovarian** Cancer

* breast cancer **includes** DCIS (ductal carcinoma in situ) and **excludes** LCIS (lobular carcinoma in situ)

** ovarian cancer refers to invasive non-mucinous epithelial ovarian cancer; **includes** cancer of the fallopian tubes, primary peritoneal cancer, and STIC (serous tubal intraepithelial carcinoma); **excludes** borderline/LMP ovarian tumours

- personal history of breast* cancer diagnosed ≤ age 35
- personal history of breast* cancer diagnosed ≤ age 50 AND no family history known due to adoption
- personal history of "triple negative" (ER- PR- HER2-) breast cancer diagnosed ≤ age 60
- personal history of male breast cancer
- personal history of more than 1 primary breast* cancer diagnosis, at least 1 of which was diagnosed ≤ age 50
- personal history of ovarian** cancer at any age (**pathology report required**)
- personal history of both breast* and ovarian** cancer
- personal history of breast or ovarian cancer and Ashkenazi Jewish heritage
- family history that includes **1 or more of the following**:
 - a close relative with personal history as above
 - Ashkenazi Jewish heritage and 1 or more relatives with breast* cancer and/or ovarian** cancer
 - 1 case of ovarian** cancer and 1 case of breast* cancer in close female relatives
 - 2 or more cases of ovarian** cancer in close relatives
 - 2 cases of breast* cancer in close female relatives, both diagnosed ≤ age 50
 - 3 or more cases of breast* cancer in close female relatives, with at least 1 diagnosed ≤ age 50

Hereditary Cancer: <http://www.bccancer.bc.ca/health-professionals/clinical-resources/cancer-management-guidelines/hereditary-cancer>

Hereditary Cancer Program Referral Form: http://www.bccancer.bc.ca/coping-and-support-site/Documents/Hereditary%20Cancer%20Program/HCP_Form-ReferralForm.pdf

- *Eligibility Guidelines for Hereditary Breast and/or Ovarian Cancer listed on Referral Form*

BC Cancer – Hereditary Cancer Referral

Download the Hereditary Cancer
Program Referral form >

Lynch Syndrome (also known as Hereditary Nonpolyposis Colorectal Cancer/HNPCC)

- personal history of colorectal cancer diagnosed \leq age 40
- personal history of colorectal cancer diagnosed \leq age 50 AND no family history known due to adoption
- personal history of a Lynch syndrome¹ related cancer at any age **with** IHC-deficient/MSI-H result (**report required**)
- personal history of 2 Lynch syndrome¹ related cancer diagnoses, at least of which was diagnosed \leq age 50
- family history that includes:
 - a close relative with personal history as above, OR
 - 2 first degree relatives with a Lynch syndrome¹ related cancer, both diagnosed \leq age 50, OR
 - 3 or more Lynch syndrome¹ related cancers with at least 1 case diagnosed \leq age 50

¹ **Lynch syndrome related cancers** include: colorectal, endometrial, ovarian, gastric, small bowel, hepatobiliary, pancreatic, kidney, ureter, brain tumours, sebaceous gland adenomas, or pathologically-confirmed colorectal adenoma \leq age 40.

Hereditary Cancer: <http://www.bccancer.bc.ca/health-professionals/clinical-resources/cancer-management-guidelines/hereditary-cancer>

Hereditary Cancer Program Referral Form: http://www.bccancer.bc.ca/coping-and-support-site/Documents/Hereditary%20Cancer%20Program/HCP_Form-ReferralForm.pdf

- *Eligibility Guidelines for Lynch Syndrome listed on Referral Form*

LEAF (Late Effects Assessment and Follow-up) Clinic

Menu ☰

Health Professionals / Clinical Resources / [Late Effects, Assessment & Follow Up](#)

- For Survivors of Childhood Cancer
- At Risk Population
- [Long-Term Follow-Up Guidelines for Survivors of Childhood, Adolescent, and Young Adult Cancers](#)

Accredited Learning Module

To learn more about late effects, visit the [Late Effects of Childhood Cancers](#) accredited online CME module

LEAF (Late Effects Assessment and Follow-up) Clinic:

<http://www.bccancer.bc.ca/health-professionals/clinical-resources/late-effects-assessment-follow-up>

Long- Term Follow-Up Guidelines for Survivorship of Childhood, Adolescent, and Young Adult Cancers: <http://www.survivorshipguidelines.org>

- *Excellent Late Effects Guidelines for young Cancer Survivors*

Late Effects of Childhood Cancers Accredited Learning Module:

<https://elearning.ubccpd.ca/login/index.php>

- *UBC-CPD Module 0.75 Mainpro+ Credits*

LEAF (Late Effects Assessment and Follow-up) Clinic

Menu ☰

Our Services / Services / [Late Effects, Assessment & Follow-Up](#)

- Referral Information

Referrals

You do not need a referral for this clinic. Talk to your family doctor about attending the clinic or contact us directly.

Physicians: Please refer patients using the [Clinic referral form](#).

LEAF (Late Effects Assessment and Follow-up) Clinic Referral Form:

http://www.bccancer.bc.ca/leaf/Documents/LEAF_Clinic_Referral_Form.pdf

BC Cancer – Cancer Management Guidelines

Menu ☰

Health Professionals / Clinical Resources / [Cancer Management Guidelines](#)

In this section

Cancer Management Guidelines	
Breast Cancer	+
Gastrointestinal Cancer	+
Genitourinary Cancer	+
Gynecology	+
Head & Neck Cancer	+



BC Cancer – Cancer Management Guidelines: <http://www.bccancer.bc.ca/health-professionals/clinical-resources/cancer-management-guidelines>

Each tumor site has a comprehensive collection of Cancer Management Guidelines in various categories

BC Cancer – Breast Cancer Management Guidelines

Menu ☰

Health Professionals / Clinical Resources / Cancer Management Guidelines / Breast Cancer

Breast Cancer

- Demographics and Risk Factors
- Prevention
- Screening/Early Detection
- Diagnosis
- Staging
- Management
- Survivorship Care



Example; BC Cancer – Breast Cancer Management Guidelines:

<http://www.bccancer.bc.ca/health-professionals/clinical-resources/cancer-management-guidelines/breast>

Breast Cancer Management Guidelines

Menu ☰

Health Professionals / Clinical Resources / Cancer Management Guidelines / Breast Cancer / Breast

- [BC Cancer Breast Cancer Surveillance Guidelines](#)
- [View April 2018 FPON Webcast by BC Cancer's Dr. Simon Baxter](#)

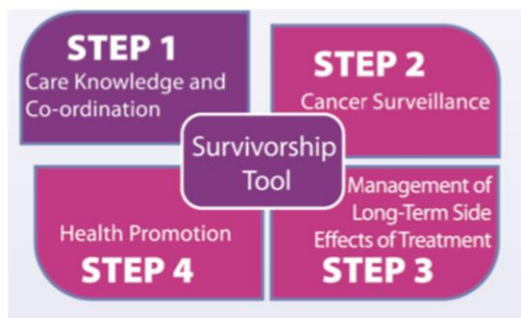


*BC Cancer Breast Cancer Surveillance Guidelines: <http://www.bccancer.bc.ca/health-professionals/clinical-resources/cancer-management-guidelines/breast/breast#7-Survivorship-Care> – * need to copy and paste this URL to browser*

April 2018 Breast Cancer Surveillance FPON Webcast by BC Cancer's Dr. Simon Baxter: <https://bccancer.adobeconnect.com/pldfqecyjbx9/?proto=true>

CFPC Breast Cancer Follow Up Guidelines

Breast Cancer Survivorship Tool



CFPC Breast Cancer Follow Up Guidelines:

https://www.cfpc.ca/uploadedFiles/Directories/Committees_List/BCS-Tool-Eng-4-29-2019.pdf

Colon Cancer Management Guidelines

Menu ☰

Health Professionals / Clinical Resources / Cancer Management Guidelines / Gastrointestinal Cancer / Colon

- [BC Cancer Colon Cancer Surveillance Guidelines](#)
- [View March 2019 FPON Webcast by BC Cancer's Dr. Howard Lim:](#)



BC Cancer Colon Cancer Surveillance Guidelines: <http://www.bccancer.bc.ca/health-professionals/clinical-resources/cancer-management-guidelines/gastrointestinal/colon>

March 2018 Colon Cancer Surveillance FPON Webcast by BC Cancer's Dr. Howard Lim: <https://bccancer.adobeconnect.com/pp9mdl22x6jd/>

Canadian Cancer Society



- Up to date Canadian Cancer Statistics
- Publications designed for patients but very useful for health professionals as an overview
- Revised as cancer care evolves

Canadian Cancer Society: <http://www.cancer.ca/en/support-and-services/resources/publications/?region=bc>

The Price is Right!

- Free App for Oncology Practice – for Smart Devices and Desktops
- [ONCOASSIST](https://oncoassist.com) - <https://oncoassist.com>
 - Adjuvant Tools
 - Prognostic Scores
 - Staging
 - Drug Interactions
 - Formulas
 - Toxicity Grading
 - Drug Information
 - Immunotherapy Toxicity Tool



ONCOASSIST: <https://oncoassist.com>

CareConnect

What they are saying...

“

Overall fantastic initiative and wonderful addition to community based practice. Saving me and especially my staff tons of time... (thank!)
- Dr. Fraser Norris, Spectrum Health

CareConnect has been an amazing tool to have! It has saved us lots of time as we don't have to wait for hospitals to reply back to our fax requests. It's great to have a patient's history in one central place."
- MDA, Ambleside Medical Centre

Having access to CareConnect within my EMR has made access so much easier. I use CareConnect almost every day. If I'm not sure of whether or when I will receive a document from someone like a lab or acute care, I can quickly check in CareConnect without having to call someone or wait to see if the information arrives.

- Dr. Fiona Duncan, Private Physician Chalcote Medical Clinic



Rapid access to patient information

from Health Authorities and Provincial sources

- ✓ Visits/episodes of care from acute care and community
- ✓ Dictated/transcribed reports from acute care settings
- ✓ Provincial & community labs
- ✓ Provincial diagnostic imaging reports
- ✓ Casenotes, assessments & care plans from community sites
- ✓ Medications from PharmaNet

EMR Integration

Click on a button in your EMR to launch CareConnect in patient context!

- ✓ Telus MedAccess
- ✓ Intrahealth Profile
- ✓ Telus Wolf
- ✓ Plasia
- and OSCAR EMR coming soon!

For more information, contact us:
CareConnect@phsa.ca



CareConnect

The Provincial eHealth Viewer

Patient information at your fingertips.

Now available in private practice clinics for physicians and other supporting staff.

Get connected!

Email CareConnect@phsa.ca to get started.

Visit our website at www.vch.ca/careconnect

Benefits of CareConnect in Your Private Practice

Having instant access to your patient's details of care means:

- Less paperwork
- Less time phoning for latest results
- Access to medications history
- Better, safer patient care
- Better flow of information across the care continuum
- Less unnecessary duplicate diagnostic testing

Join over 65,000 health care professionals



enrolled across six Health Authorities in BC



Getting Started

Are you a GP practicing within the Vancouver Coastal Health catchment?

Is your clinic on the PPN (Private Physician Network)?

Email CareConnect@phsa.ca to express interest.

Our team will be happy to outline the steps and work with you and your team to gain CareConnect access!

We're Expanding!

250+ GPs and medical office staff now using CareConnect in their clinics

60+ Private practice clinics connected within Vancouver Coastal Health



CareConnect Website: <http://www.vch.ca/careconnect>

- An amazing tool giving rapid access to patient information from Health Authorities and Provincial sources
 - Such as acute care reports
 - BC Cancer reports
 - Provincial and community lab
 - Provincial diagnostic imaging
 - Pharmanet access

CareConnect

- Can be accessed from Host Health Authority computers across the province.
- Physicians in Private Clinics in the Vancouver Coastal Health region can request access
- Integrated into the 5 major EMRs
- E-mail to sign up: CareConnect@phsa.ca
- CareConnect Website: www.vch.ca/careconnect



CareConnect

CareConnect Website: <http://www.vch.ca/careconnect>

E-mail to sign up: CareConnect@phsa.ca

Skin Cancer Atlas

Menu ☰

Health Professionals / Clinical Resources / [Skin Cancer Atlas](#)

Skin Cancer Atlas

This Skin Cancer Atlas is a resource for the [Skin Cancer Prevention and Early Diagnosis Courses](#). It is also a resource for health care professionals (see also [Skin Cancer Management Guidelines](#)) and members of the public who wish to explore the clinical characteristics of common skin cancers and pre-cancers.

Please click on the categories, located on the right hand side, for photos.

In this section

[Skin Cancer Atlas](#)

[Basal Cell Carcinoma](#)

[Keratoacanthoma](#)

[Keratoses](#)

Skin Cancer Atlas: <http://www.bccancer.bc.ca/health-professionals/clinical-resources/skin-cancer-atlas>

- *Skin lesions are common in family practice.*
- *The Skin Cancer Atlas is a resource to explore common skin cancers and pre-cancers.*
- *Skin Cancer Prevention and Early Diagnosis courses are also available. Physicians can earn professional development credits.*

Cancer Drug Manual / Immunotherapy



Follow us



Search...



[Our Services](#)

[Health Info](#)

[Our Research](#)

[About](#)

[Contact](#)

[Health Professionals](#)

[Donate](#)

[Careers](#)

Menu

[Health Professionals](#) / [Clinical Resources](#) / [Cancer Drug Manual](#)

SHARE A A

Cancer Drug Manual

The Cancer Drug Manual® provides concise, evaluative information on drugs used in oncology. Inclusion in this index is not an indication of the funding status of a drug through BC Cancer. To determine drug coverage, see Benefit Drug List.

[Go to the Drug Index >](#)

[Go to Immunotherapy >](#)



In this section

[Cancer Drug Manual](#)

[Body Surface Area Calculator](#)

[Drug Index](#)

[Introduction](#)

[User's Guide](#)

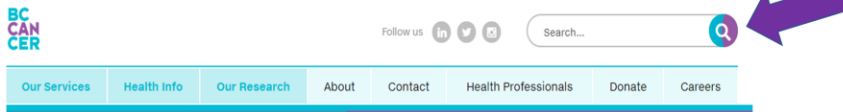
[Editorial Board](#)

Cancer Care Drug Manual/ Immunotherapy: <http://www.bccancer.bc.ca/health-professionals/clinical-resources/chemotherapy-protocols/immunotherapy>

- *More and more patients are receiving immunotherapy.*

The Power of One...

...Search bar on the BC Cancer Home Page:



- Constipation
- Diarrhea
- Nausea
- Neuropathy



- Side effects and other topics can be found by using the search bar found on the BC Cancer Home Page: <http://www.bccancer.bc.ca/>

Supportive Care Management Guidelines

Menu ☰

Health Professionals / Clinical Resources / Cancer Management Guidelines / Supportive Care

Supportive Care

Guidelines in this section:

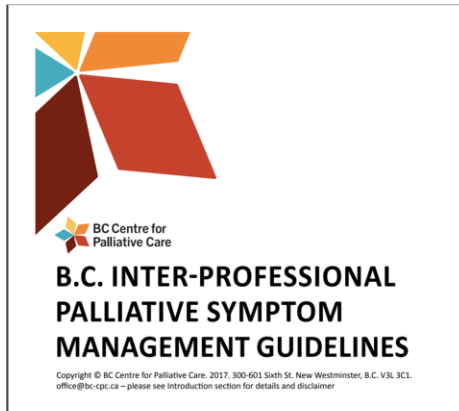
- [Febrile Neutropenia](#)
- [Natural Health Products](#)
- [Oral & Dental Care](#)
- [Osteoporosis](#)
- [Pain & Symptom Management](#)



Supportive Care/ Febrile Neutropenia Guideline: <http://www.bccancer.bc.ca/health-professionals/clinical-resources/cancer-management-guidelines/supportive-care/febrile-neutropenia>

- *Supportive care has some useful links such as Febrile Neutropenia.*
 - *Important patient presentation to be mindful of as it can have life threatening consequences.*

BC Centre for Palliative Care



BC Centre for Palliative Care: <https://www.bc-cpc.ca/cpc/wp-content/uploads/2019/03/BCPCClinicalBestPracticesInteractiveMarch2019.pdf>

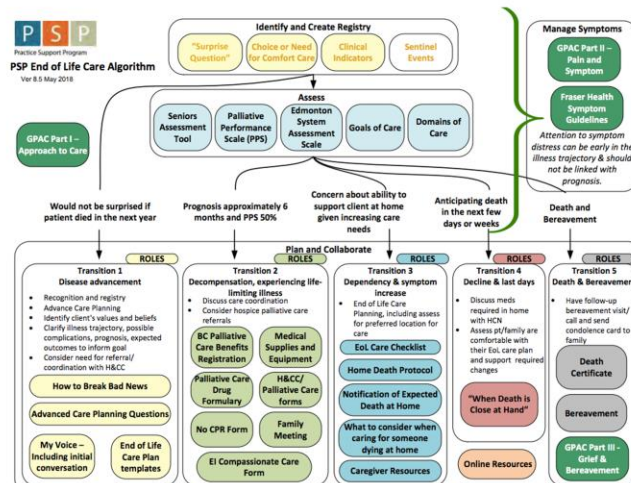
- *Direct link to the BC Centre for Palliative Care's BC Inter-professional Palliative Symptom Management Guidelines'.*

PAIN
FATIGUE
PRURITUS
SEVERE BLEEDING
CONSTIPATION
NAUSEA & VOMITING
DYSPHAGIA
ANOREXIA

DEHYDRATION
RESPIRATORY CONGESTION
DYSPNEA
COUGH
HICCUGHS
TWITCHING/ MYOCLONUS/SEIZURES
DELIRIUM
OTHER SYMPTOMS

BC Centre for Palliative Care: <https://www.bc-cpc.ca/cpc/wp-content/uploads/2019/03/BCPCClinicalBestPracticesInteractiveMarch2019.pdf>

PSP End of Life Care Algorithm



- Practice Support Program's End of Life Care Algorithm has great links to help with an approach at various stages of the disease trajectory from early identification to death and bereavement.
- It also provides practical links for resources such as a fillable copy of the 'BC Palliative Benefits Form' and a list of medications that PharmaCare covers under the 'Palliative Care Drug Formulary'.

PSP End of Life Care Algorithm:

https://www.pspexchangebc.ca/pluginfile.php/2416/mod_resource/content/1/00.0_EOL_End_of_Life_Algorithm_v8.5.pdf

BC Cancer's Family Practice Oncology Network

Useful Information and Content

- About the Primary Care Program
- Cancer Care Education Opportunities
 - [Recorded Webcasts](#)
 - [Family Practice Oncology Network Journals](#)
 - [Conference Information](#)
 - [GPO Education Information](#)



BC Cancer's Family Practice Oncology Network: <http://www.fpon.ca/>

Recorded Webcasts: <http://www.bccancer.bc.ca/health-professionals/networks/family-practice-oncology-network/continuing-medical-education>

Family Practice Oncology Network Journals: <http://www.bccancer.bc.ca/health-professionals/networks/family-practice-oncology-network/journal-of-family-practice-oncology>

Conference Information: <http://www.bccancer.bc.ca/health-professionals/networks/family-practice-oncology-network>

GPO Education Information: <http://www.bccancer.bc.ca/health-professionals/networks/family-practice-oncology-network/general-practitioner-in-oncology-education-program>

