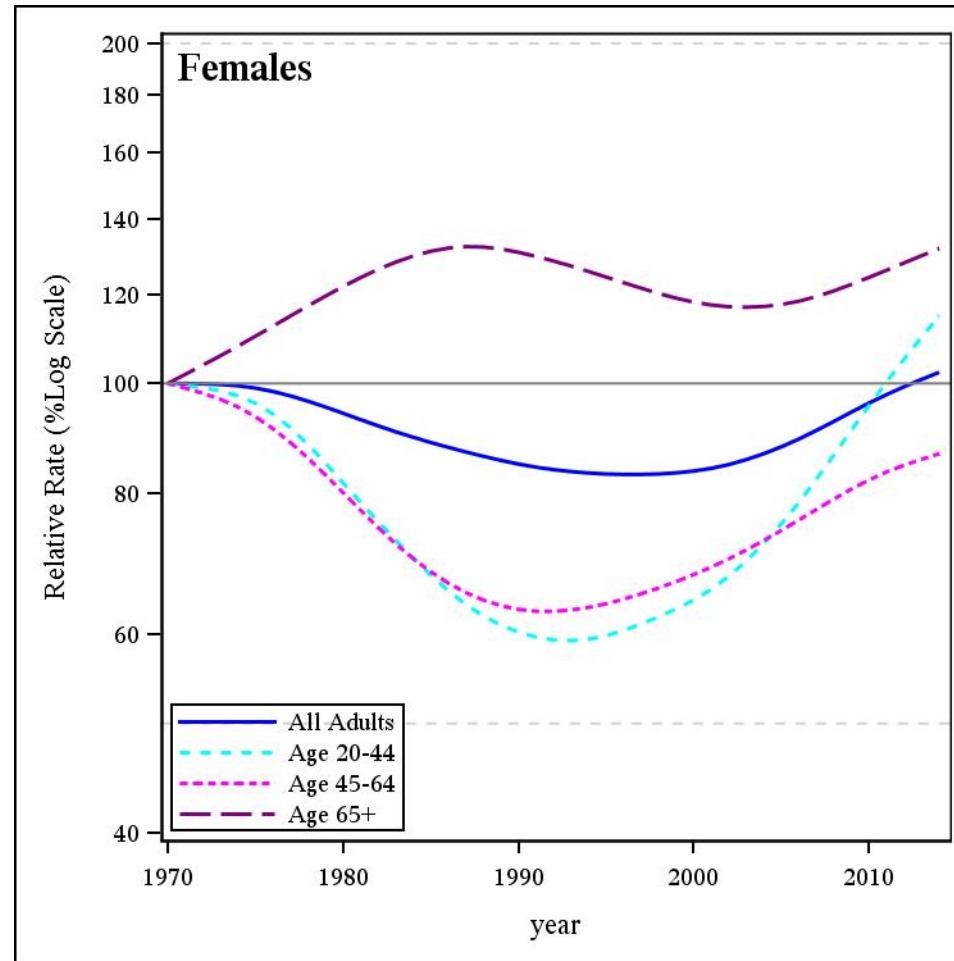




Age-Standardized Cancer Incidence Rates, Relative to 1970, British Columbia, 1970-2014

Body of Uterus



Cancer incidence includes BC residents with invasive cancer (including in-situ bladder)
 Excludes non-melanoma skin cancers (neoplasms, NOS; epithelial neoplasms, NOS; and basal and squamous)
 Age groups with less than 10 case/year are not shown
 Data Source: BC Cancer Registry Date Retrieved: 07MAR2017 Analysis by: Cancer Surveillance and Outcomes, Population Oncology