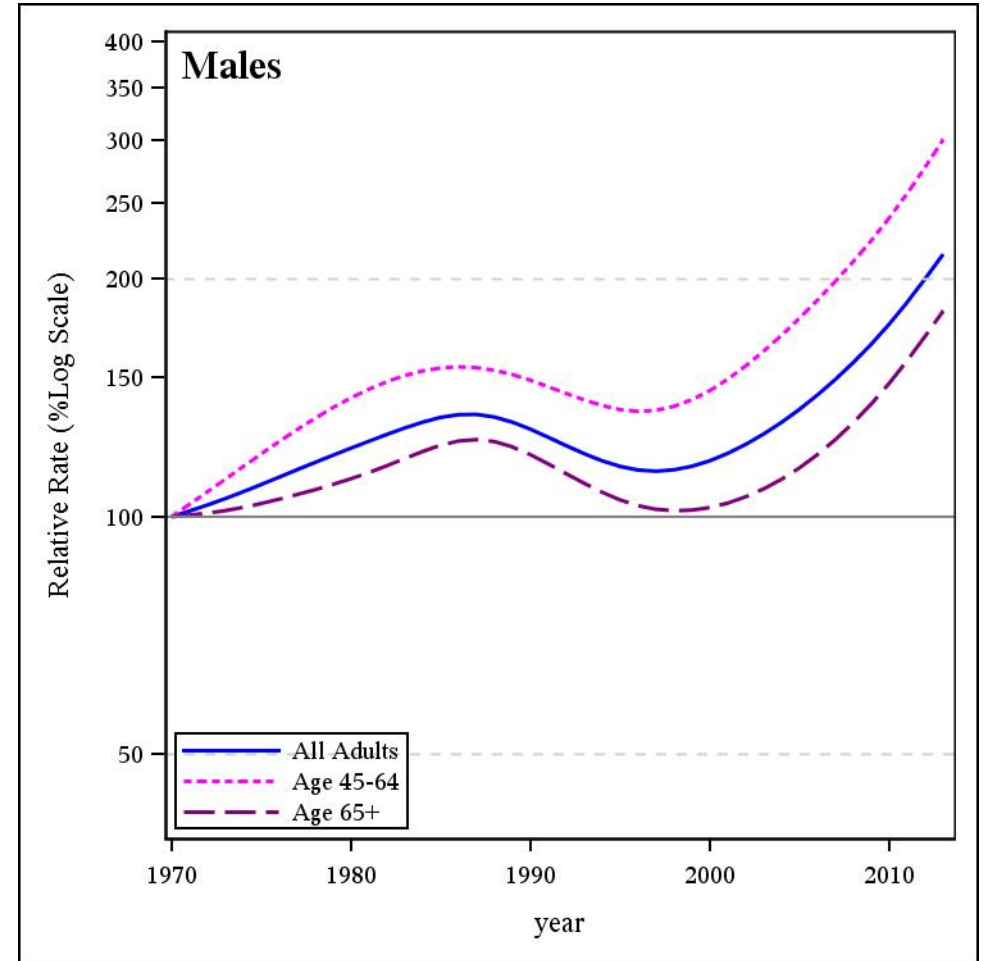
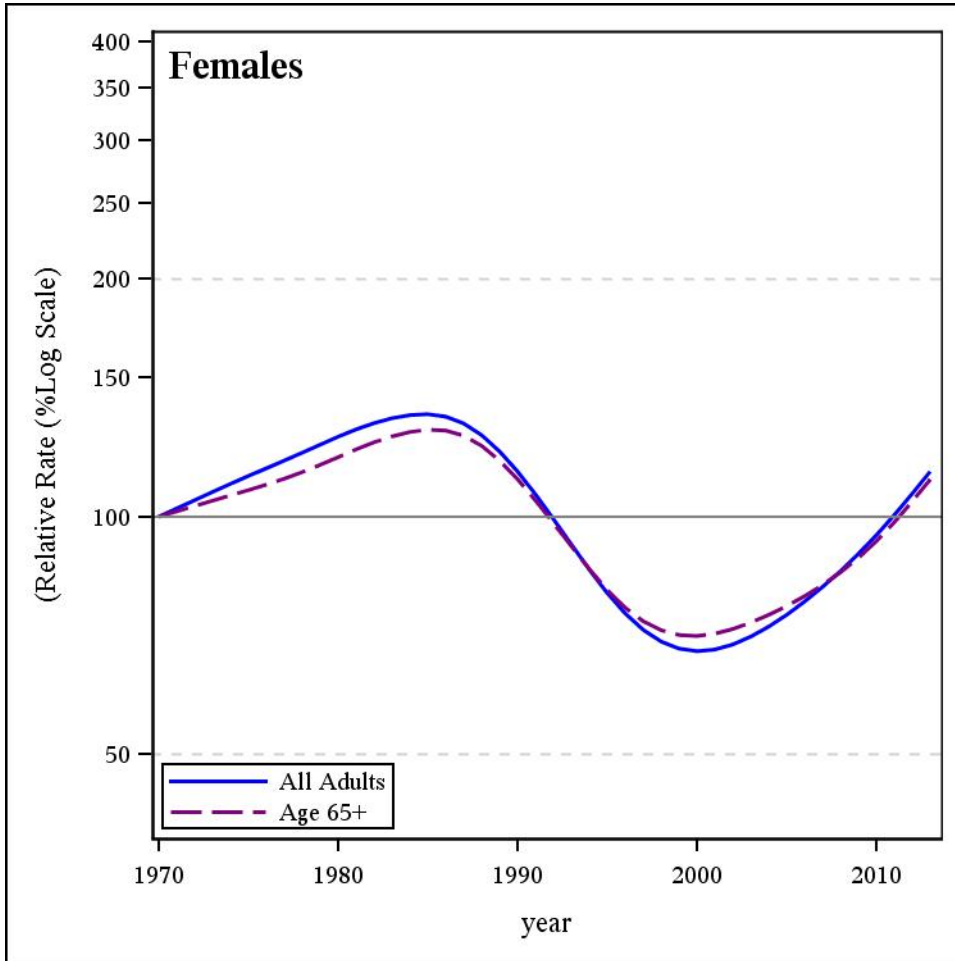




Smoothed Age-Standardized Relative Cancer Mortality Rates, British Columbia, 1970 (=100%) to 2014

Liver



The complete definition of the specific cancer listed can be found under Technical Notes of the BC Cancer Statistics, BCCA website

Age groups with less than 10 case/year are not shown

Data Source: BC Cancer Registry Date Retrieved: 07MAR2017 Analysis by: Cancer Surveillance and Outcomes, Population Oncology