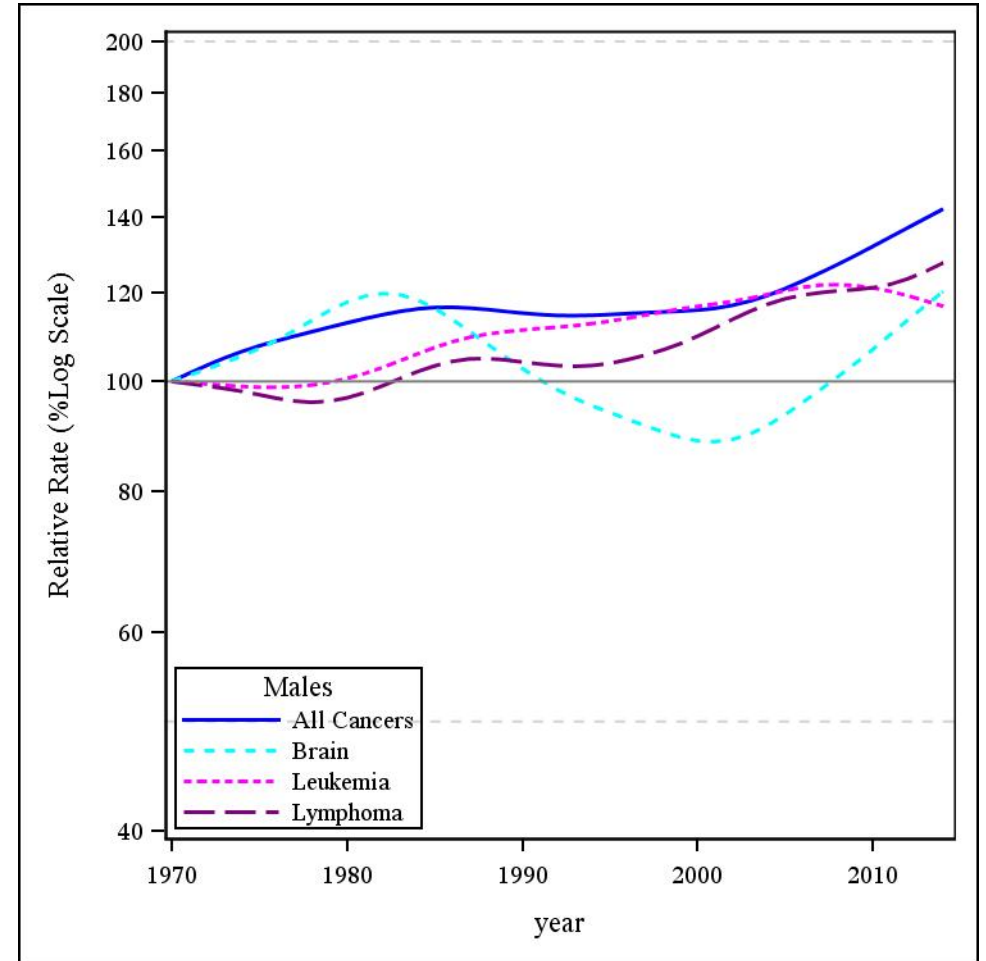
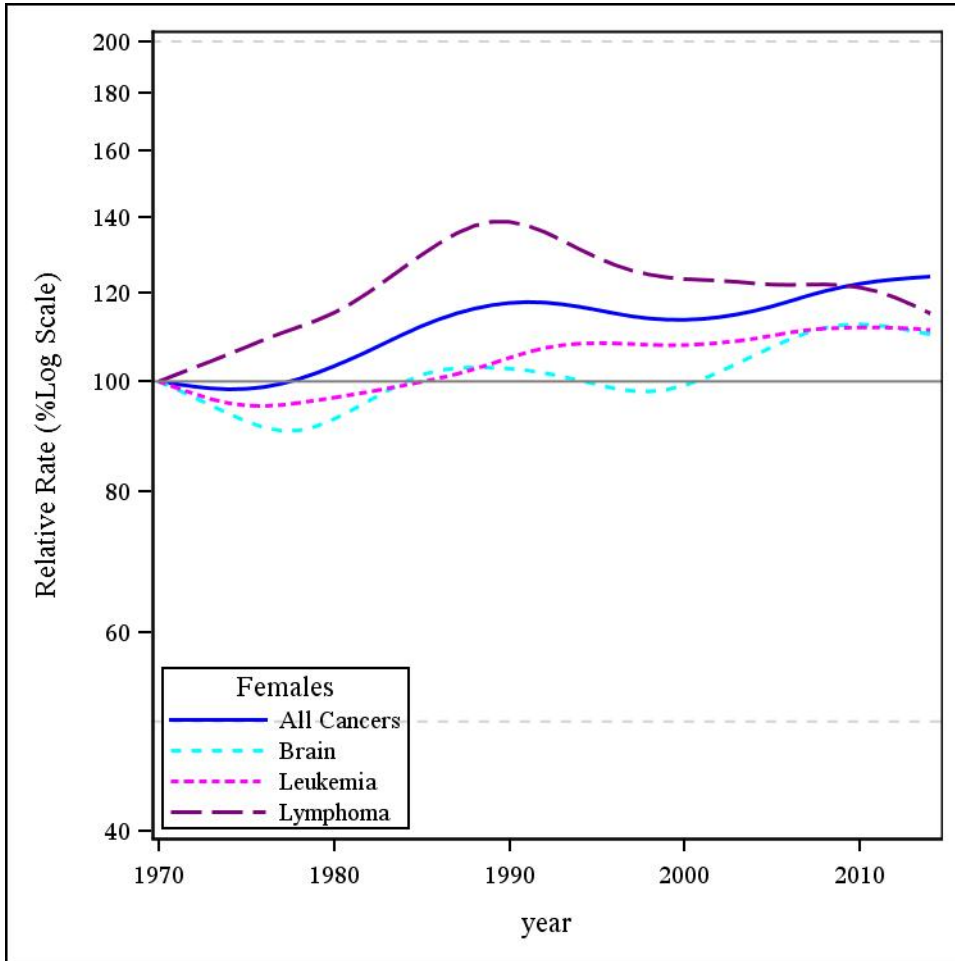




Age-Standardized Cancer Incidence Rates, Relative to 1970, British Columbia, 1970-2014

Childhood Cancers



Cancer incidence includes BC residents with invasive cancer (including in-situ bladder)
Excludes non-melanoma skin cancers (neoplasms, NOS; epithelial neoplasms, NOS; and basal and squamous)

Data Source: BC Cancer Registry Date Retrieved: 07MAR2017 Analysis by: Cancer Surveillance and Outcomes, Population Oncology