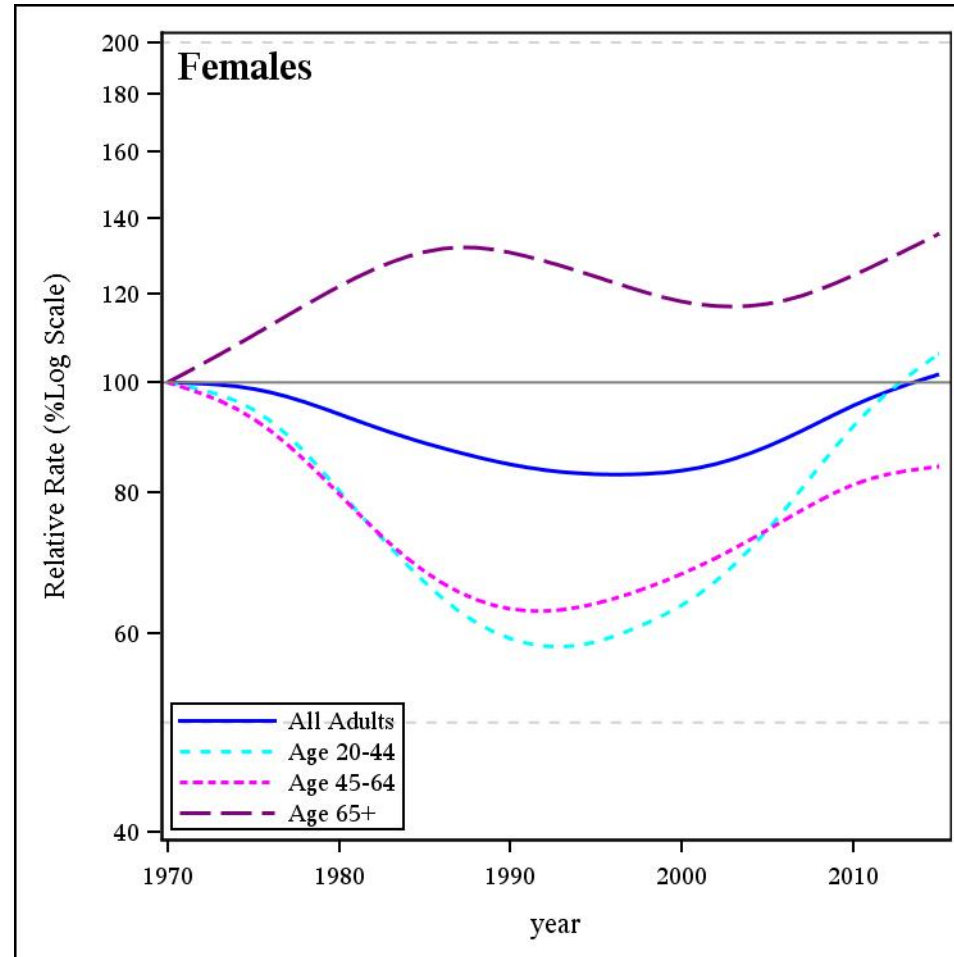


**Age-Standardized Cancer Incidence Rates, Relative to 1970, British Columbia, 1970-2015****Body of Uterus**

Cancer incidence includes BC residents with invasive cancer (including in-situ bladder)

Excludes non-melanoma skin cancers (neoplasms, NOS; epithelial neoplasms, NOS; and basal and squamous)

Age groups with less than 10 case/year are not shown

Data Source: BC Cancer Registry Date Retrieved: 02JAN2018 Analysis by: Cancer Surveillance and Outcomes, Population Oncology