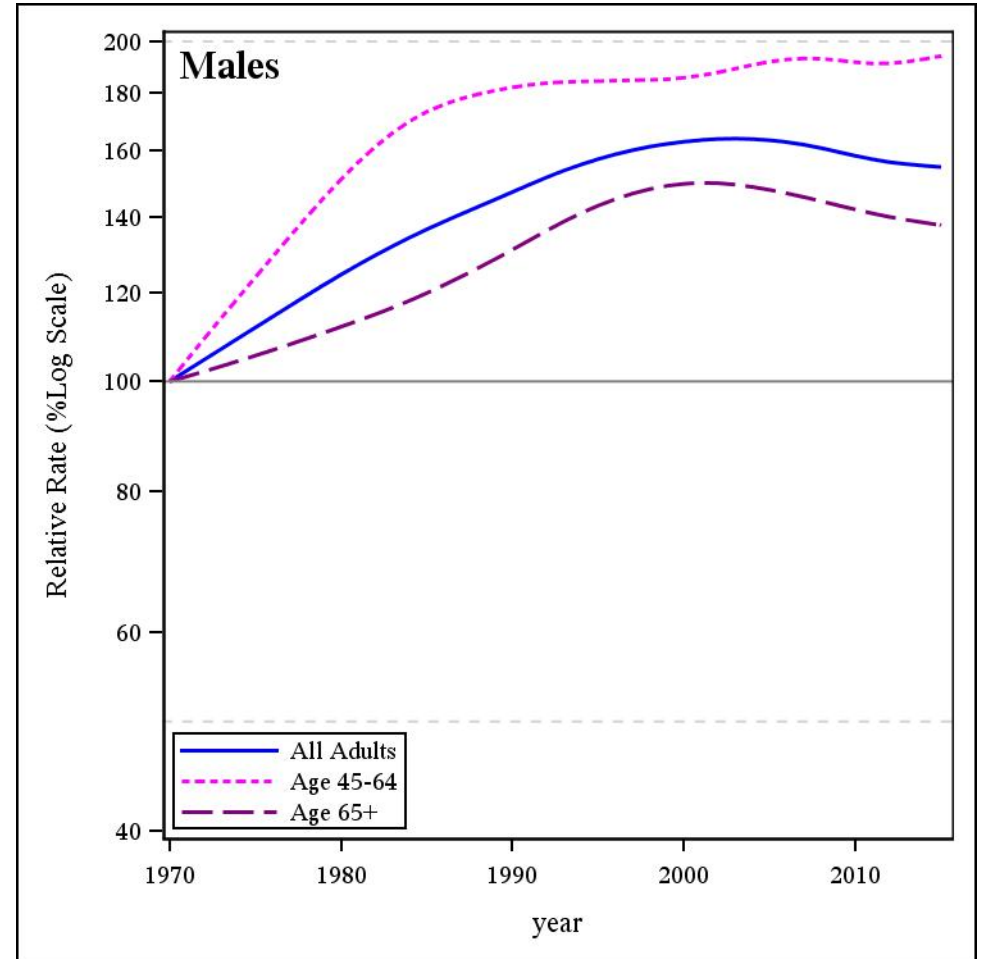
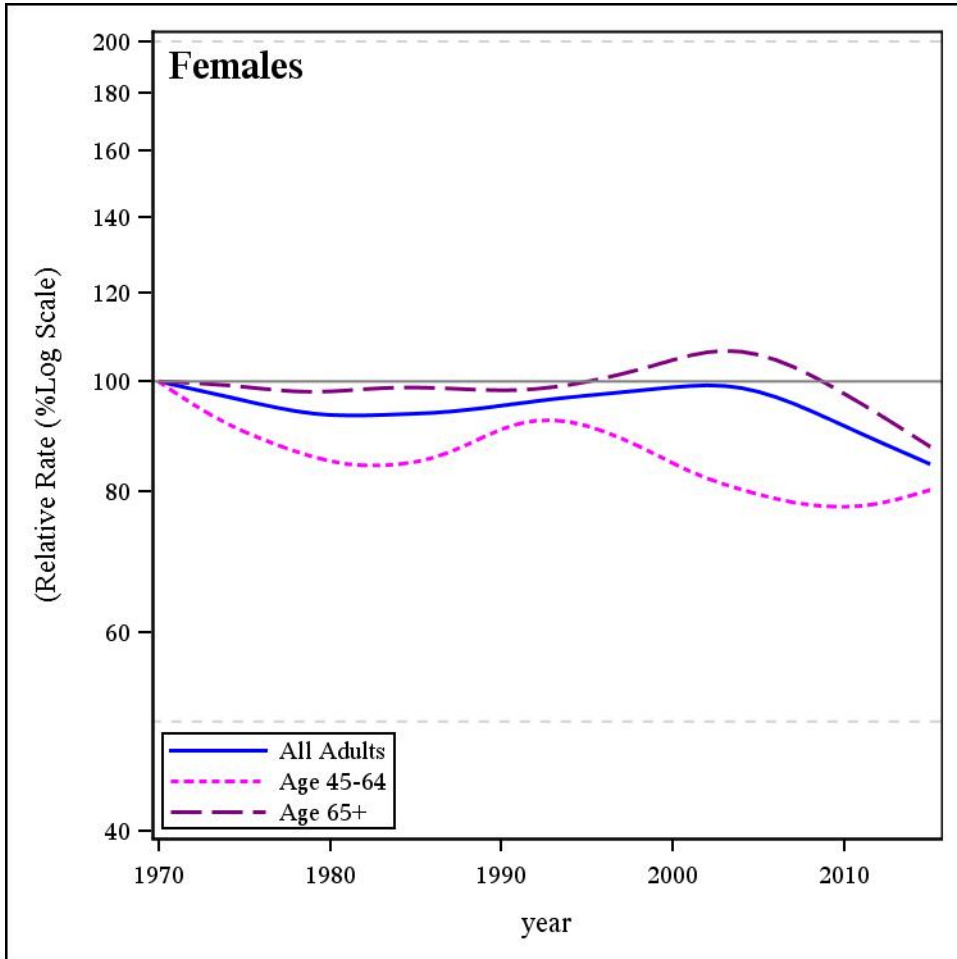


**Age-Standardized Cancer Mortality Rates, Relative to 1970, British Columbia, 1970-2015**

**Esophagus**



The complete definition of the specific cancer listed can be found under Technical Notes of the BC Cancer Statistics, BCCA website

Age groups with less than 10 case/year are not shown

Data Source: BC Cancer Registry Date Retrieved: 02JAN2018 Analysis by: Cancer Surveillance and Outcomes, Population Oncology