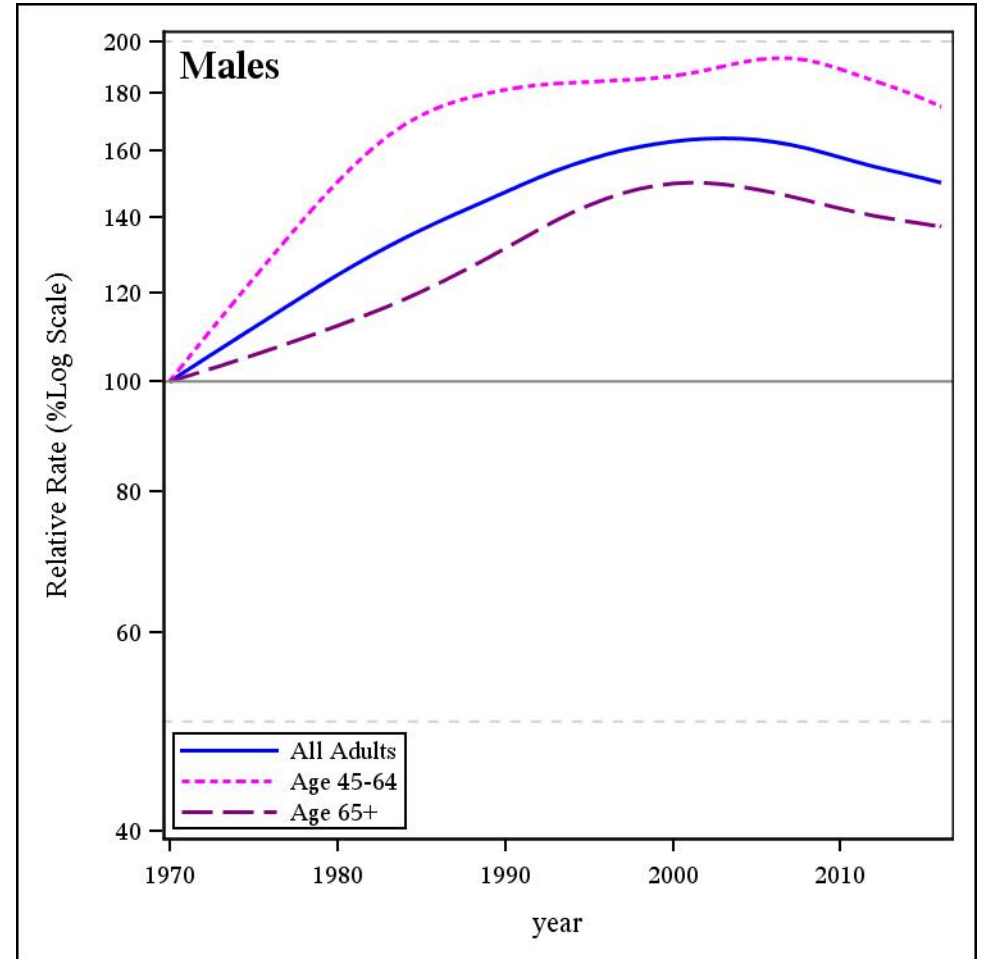
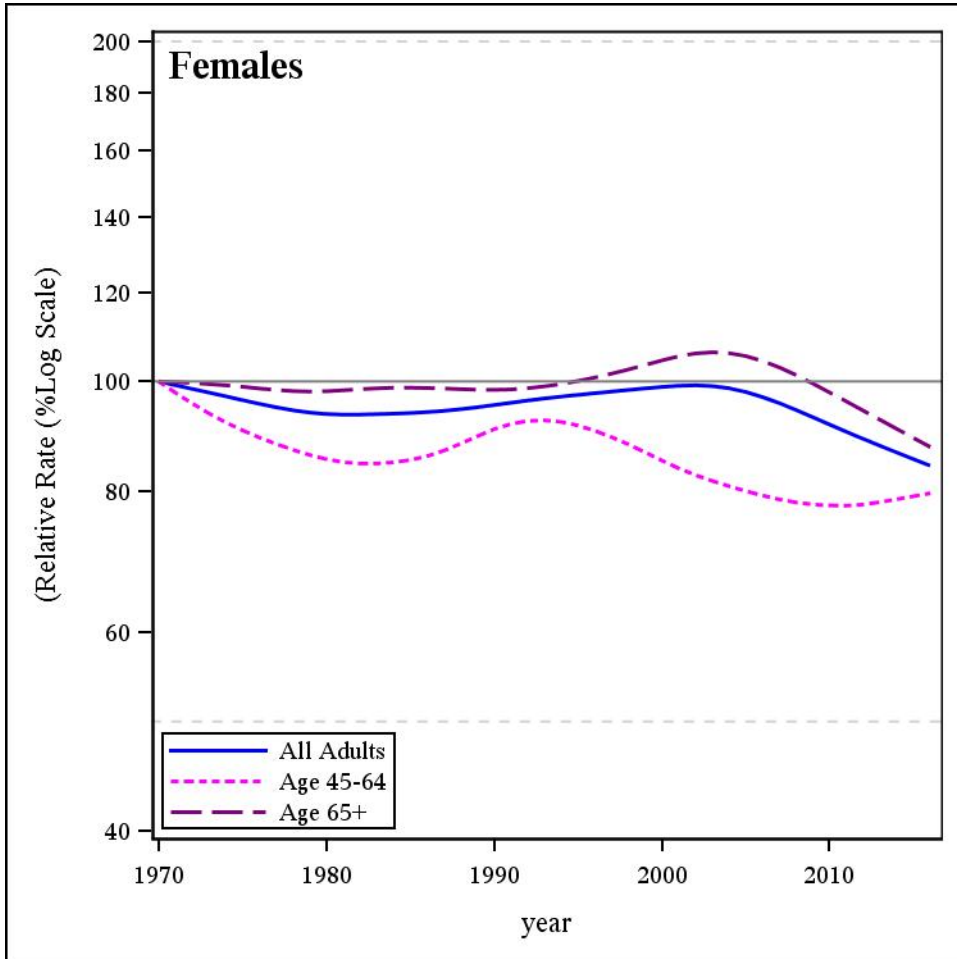


Age-Standardized Cancer Mortality Rates, Relative to 1970, British Columbia, 1970-2016

Esophagus



The complete definition of the specific cancer listed can be found under Technical Notes of the BC Cancer Statistics, BC Cancer website
 Age groups with less than 10 case/year are not shown
 Data Source: BC Cancer Registry Date Retrieved: 13JAN2019 Analysis by: Cancer Surveillance and Outcomes, Population Oncology