

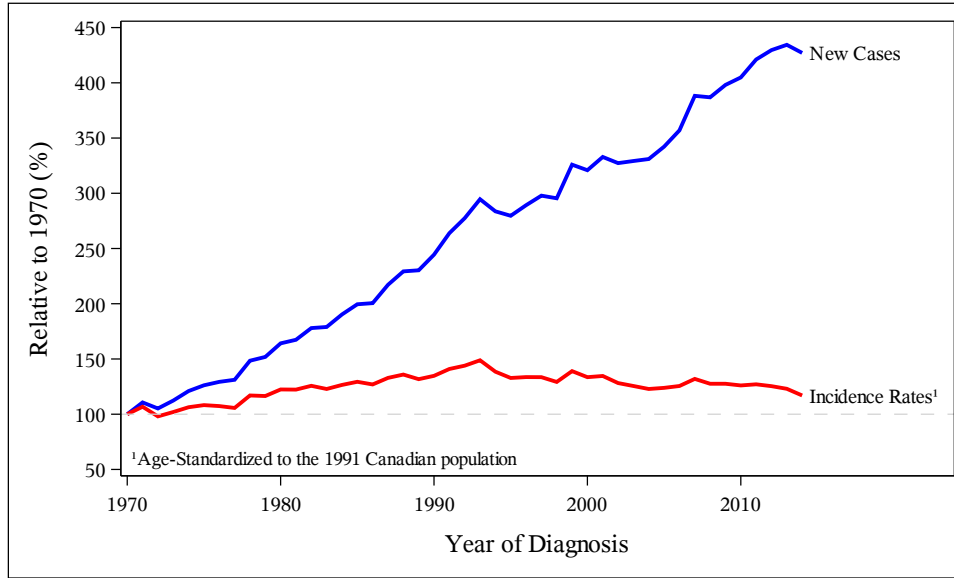


Trends in New Diagnoses and Incidence Rates*, British Columbia Diagnosis Years 1970 to 2014, By Gender, All Cancers, Relative to 1970

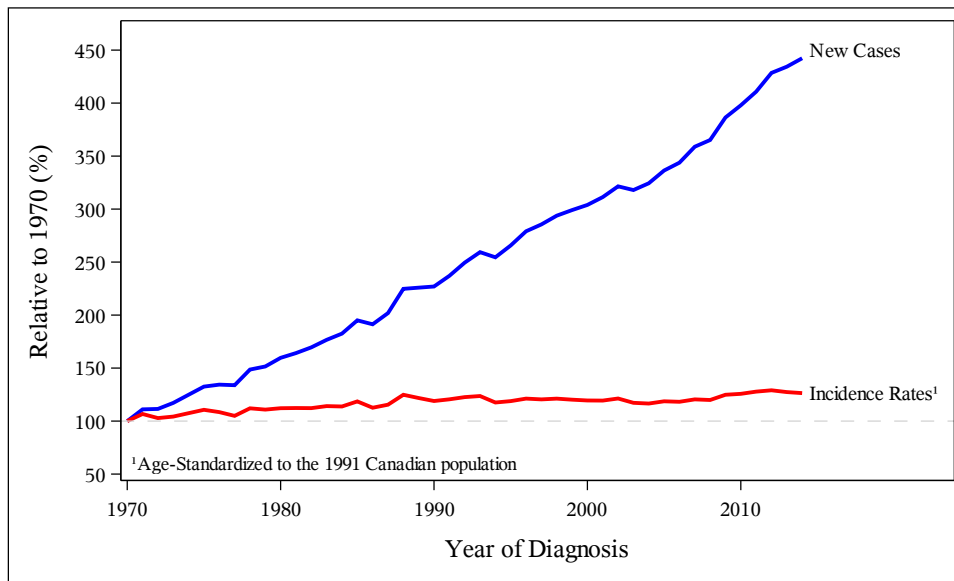
New Diagnoses:

Gender	1970	1975	1980	1985	1990	1995	2000	2005	2010	2013
Male	3000	3800	5000	6000	7400	8500	9700	10300	12200	13100
Female	2800	3700	4500	5500	6400	7400	8500	9400	11100	12200

Males



Females



*New cancer diagnoses/incidence rates includes BC residents with invasive cancer (including in-situ bladder)
 Excludes non-melanoma skin cancers (neoplasms, NOS; epithelial neoplasms, NOS; and basal and squamous)
 Data Source: BC Cancer Registry Date Retrieved: 07MAR2017 Analysis by: Cancer Surveillance and Outcomes, Population Oncology