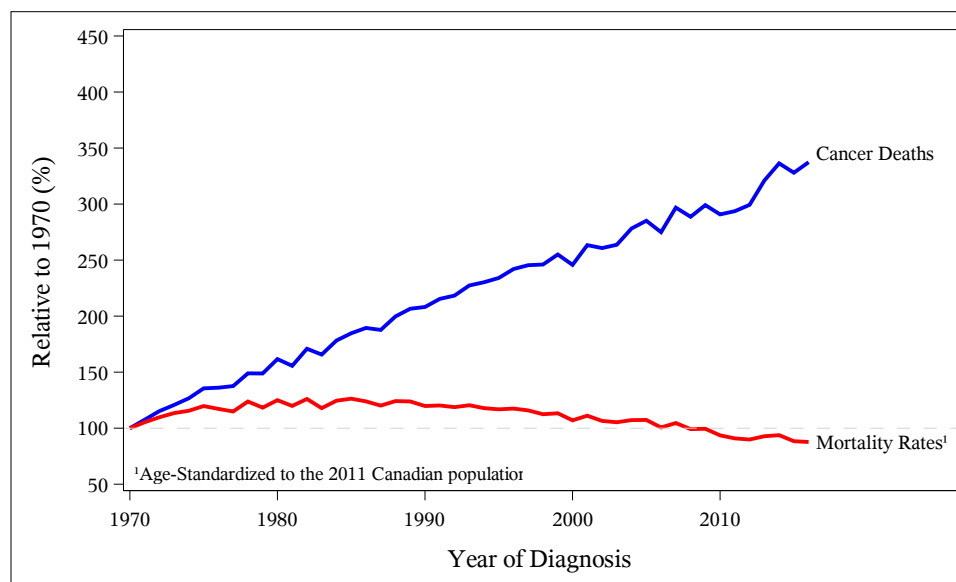


## Trends in Cancer Deaths and Mortality Rates\*, British Columbia Years of Death 1970 to 2016, by Gender, All Cancers, Relative to 1970

### Cancer Deaths:

Gender	1970	1975	1980	1985	1990	1995	2000	2005	2010	2016
Male	1595	2160	2575	2940	3315	3730	3920	4545	4635	5380
Female	1100	1585	1965	2410	2870	3240	3540	3905	4215	4745

### Males



### Females

