

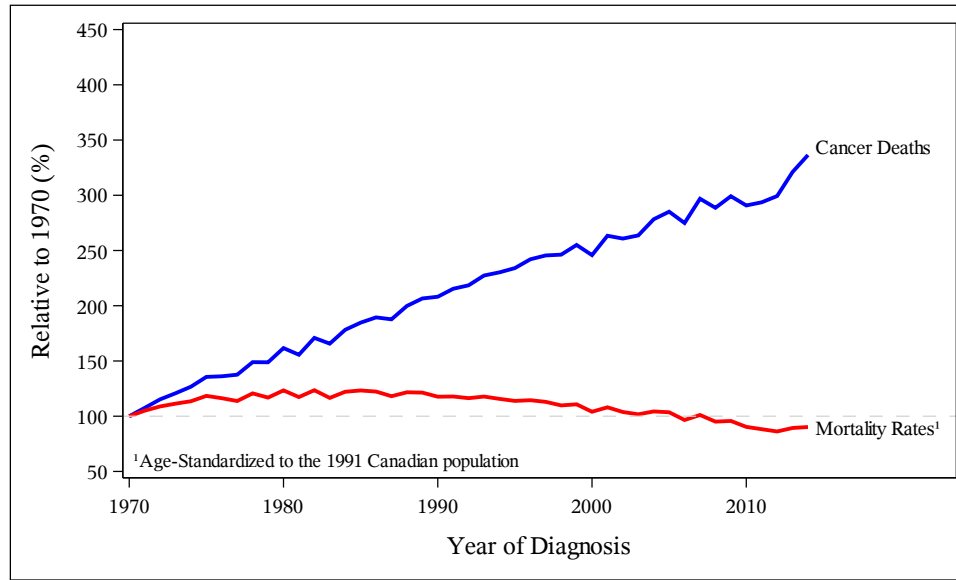


**Trends in Cancer Deaths and Mortality Rates\*, British Columbia  
Years of Death 1970 to 2014, by Gender, All Cancers, Relative to 1970**

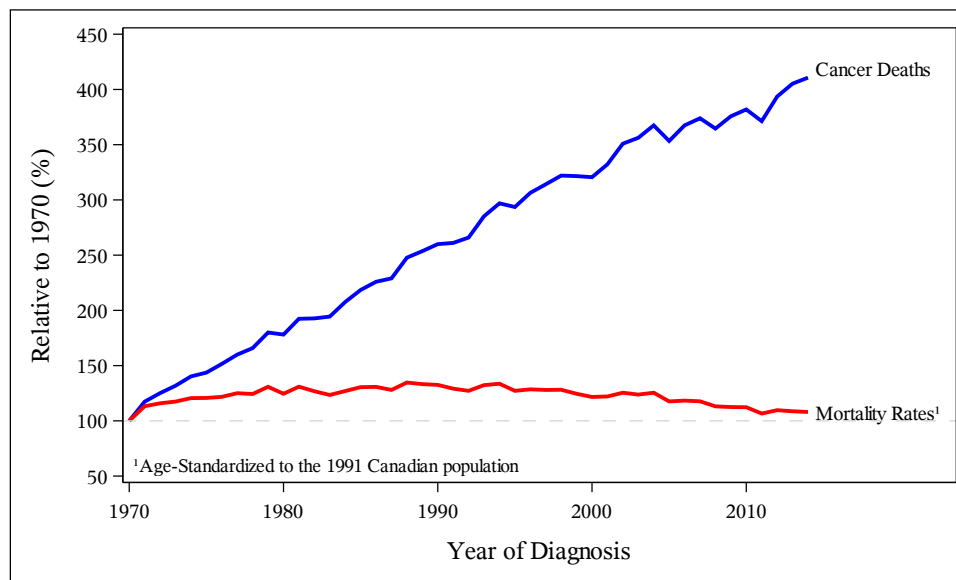
**Cancer Deaths:**

Gender	1970	1975	1980	1985	1990	1995	2000	2005	2010	2014
Male	1600	2200	2600	2900	3300	3700	3900	4500	4600	5400
Female	1100	1600	1950	2400	2900	3200	3500	3900	4200	4500

**Males**



**Females**



\*Cancer Deaths/Mortality Rates: Includes BC residents at death, dying of invasive cancer including non-melanoma skin cancers  
Data Source: BC Cancer Registry Date Retrieved: 07MAR2017 Analysis by: Cancer Surveillance and Outcomes, Population Oncology