

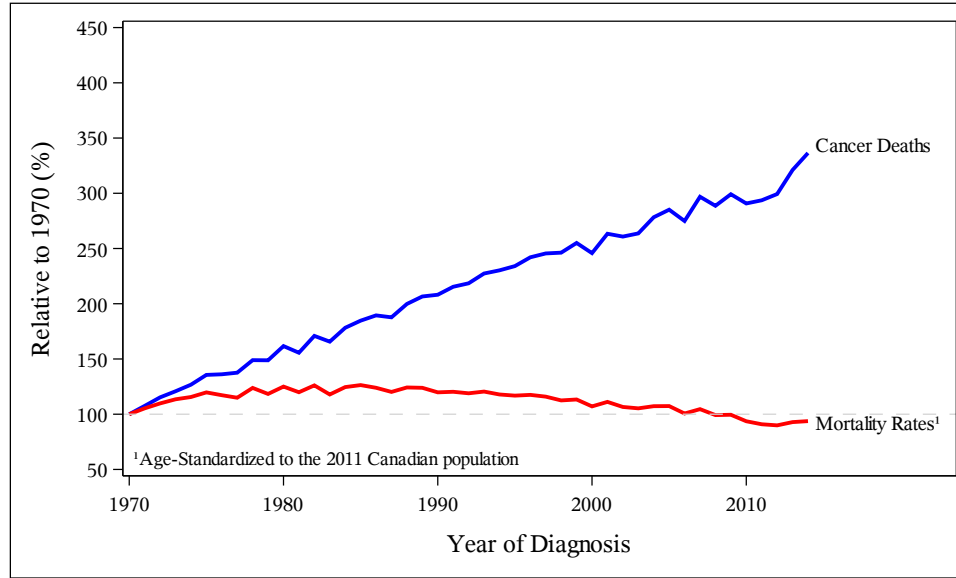


Trends in Cancer Deaths and Mortality Rates*, British Columbia
Years of Death 1970 to 2014, by Gender, All Cancers, Relative to 1970

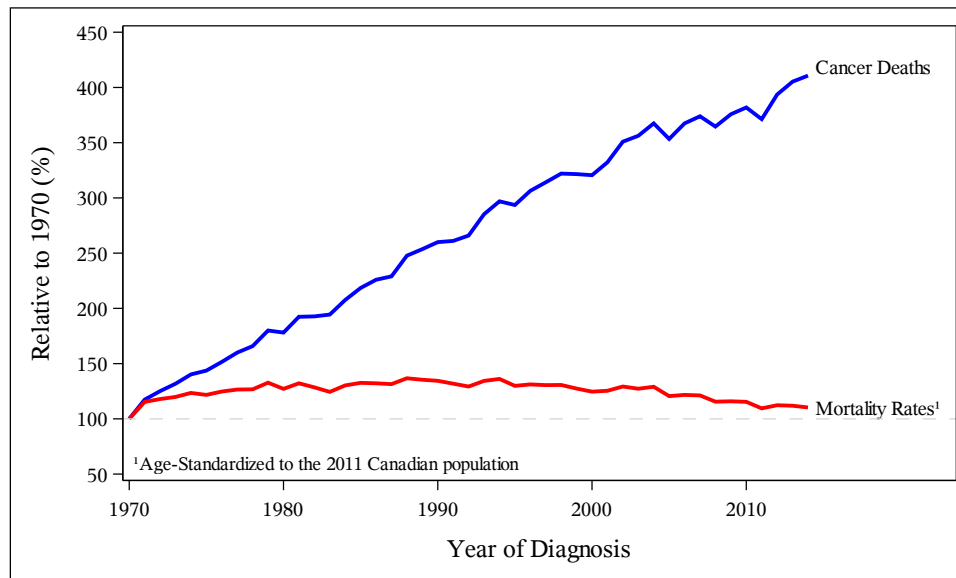
Cancer Deaths:

| Gender | 1970 | 1975 | 1980 | 1985 | 1990 | 1995 | 2000 | 2005 | 2010 | 2014 |
|--------|------|------|------|------|------|------|------|------|------|------|
| Male | 1600 | 2200 | 2600 | 2900 | 3300 | 3700 | 3900 | 4500 | 4600 | 5400 |
| Female | 1100 | 1600 | 1950 | 2400 | 2900 | 3200 | 3500 | 3900 | 4200 | 4500 |

Males



Females



*Cancer Deaths/Mortality Rates: Includes BC residents at death, dying of invasive cancer including non-melanoma skin cancers
Data Source: BC Cancer Registry Date Retrieved: 07MAR2017 Analysis by: Cancer Surveillance and Outcomes, Population Oncology