

# **Trends in 1-, 3- & 5-year Relative Survival Rates**

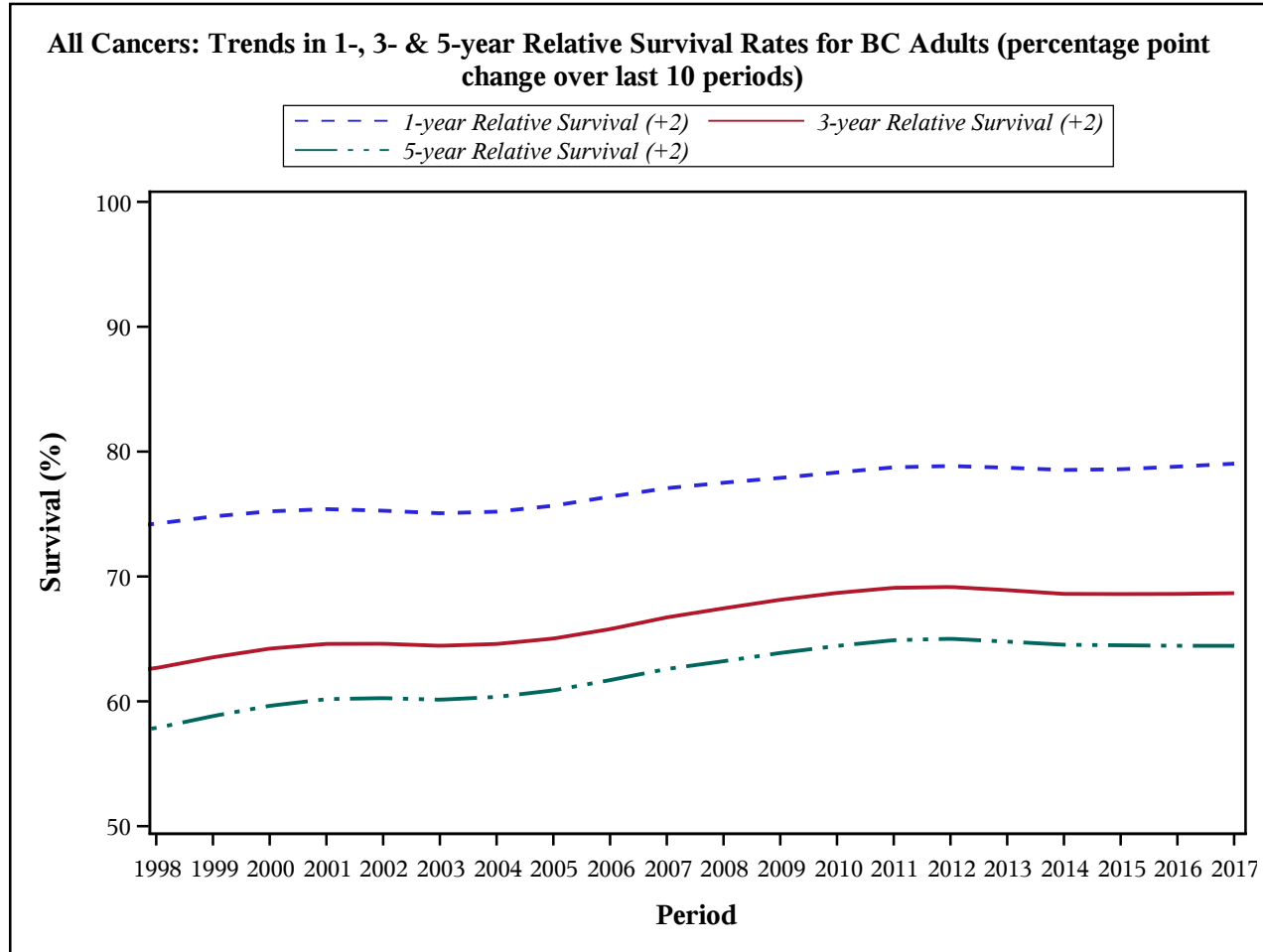
**for BC Adults (age 15-99)**

**by Cancer Type**

**1998 - 2017**

**All Cancers**

**Cancer Relative Survival Rate Trend for BC Adults, 1998 - 2017\***



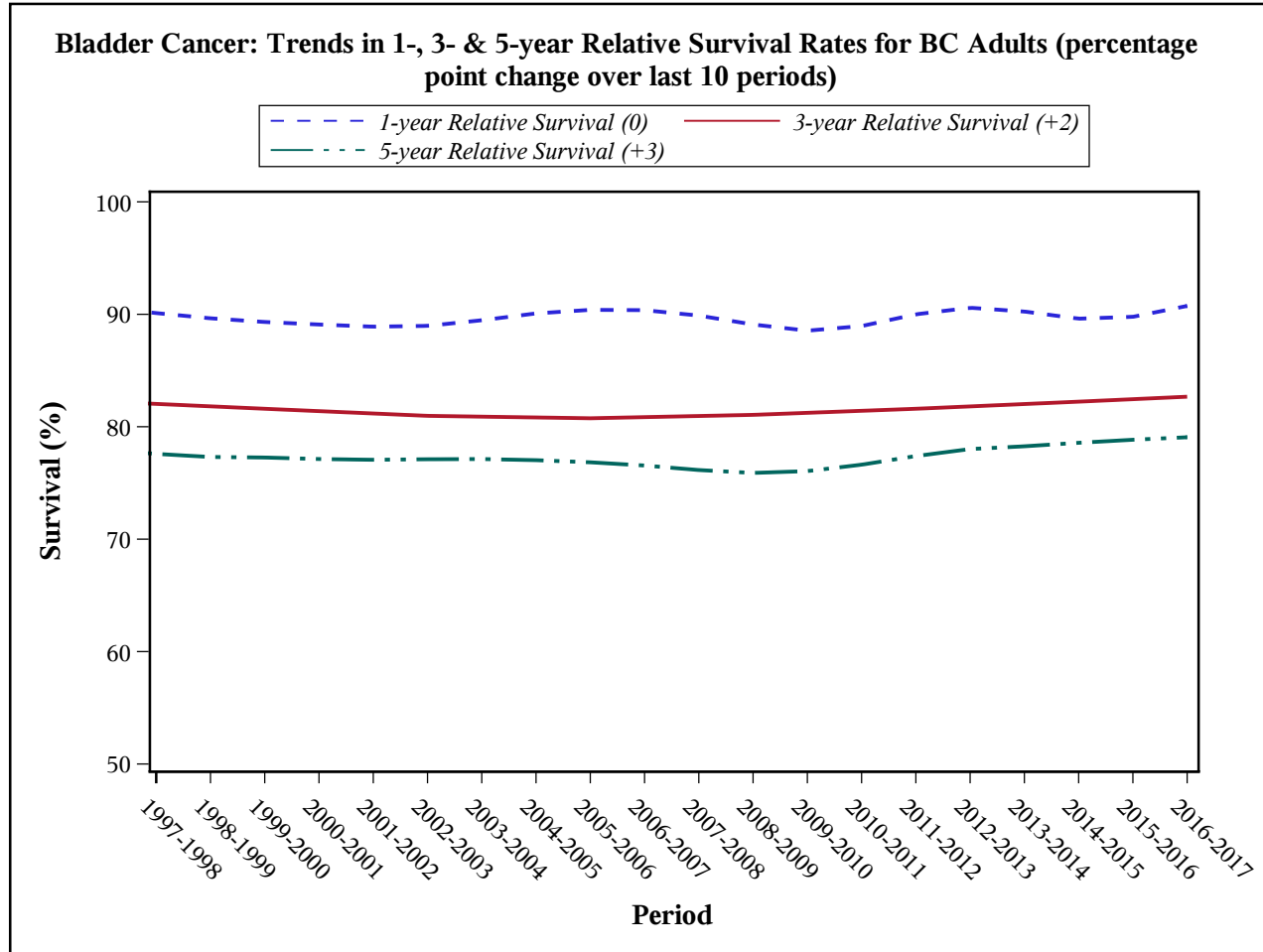
\* The end years of the periods in the plot.

Please refer to the [Introduction and Technical Notes](#) for further information.

Data Source: BC Cancer Registry Date Retrieved: 17DEC2019 Analysis by: Cancer Surveillance and Outcomes, Data & Analytics

**Bladder Cancer**

**Cancer Relative Survival Rate Trend for BC Adults, 1998 - 2017\***



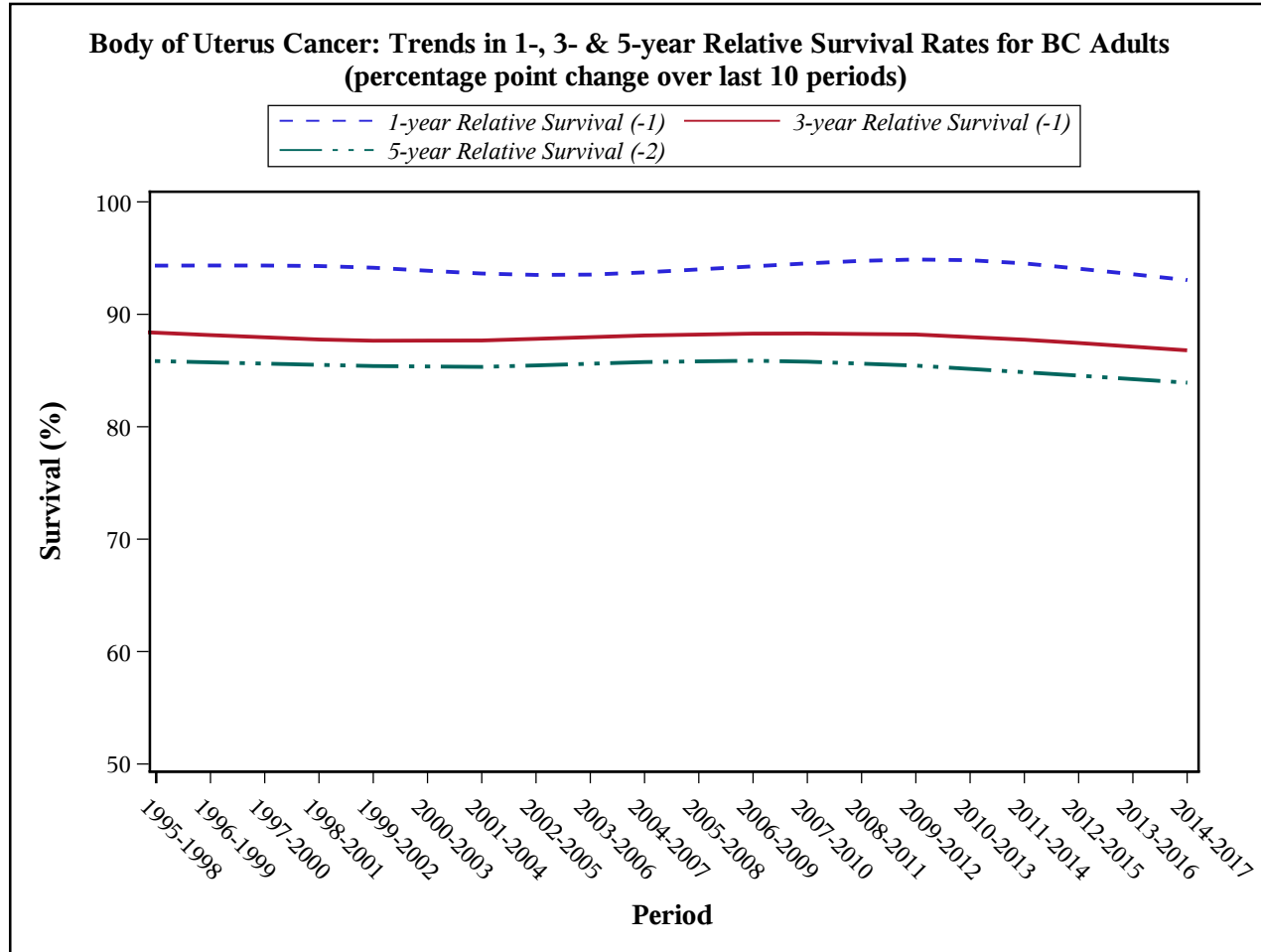
\* The end years of the periods in the plot.

Please refer to the [Introduction and Technical Notes](#) for further information.

Data Source: BC Cancer Registry Date Retrieved: 17DEC2019 Analysis by: Cancer Surveillance and Outcomes, Data & Analytics

**Body of Uterus Cancer**

**Cancer Relative Survival Rate Trend for BC Adults, 1998 - 2017\***



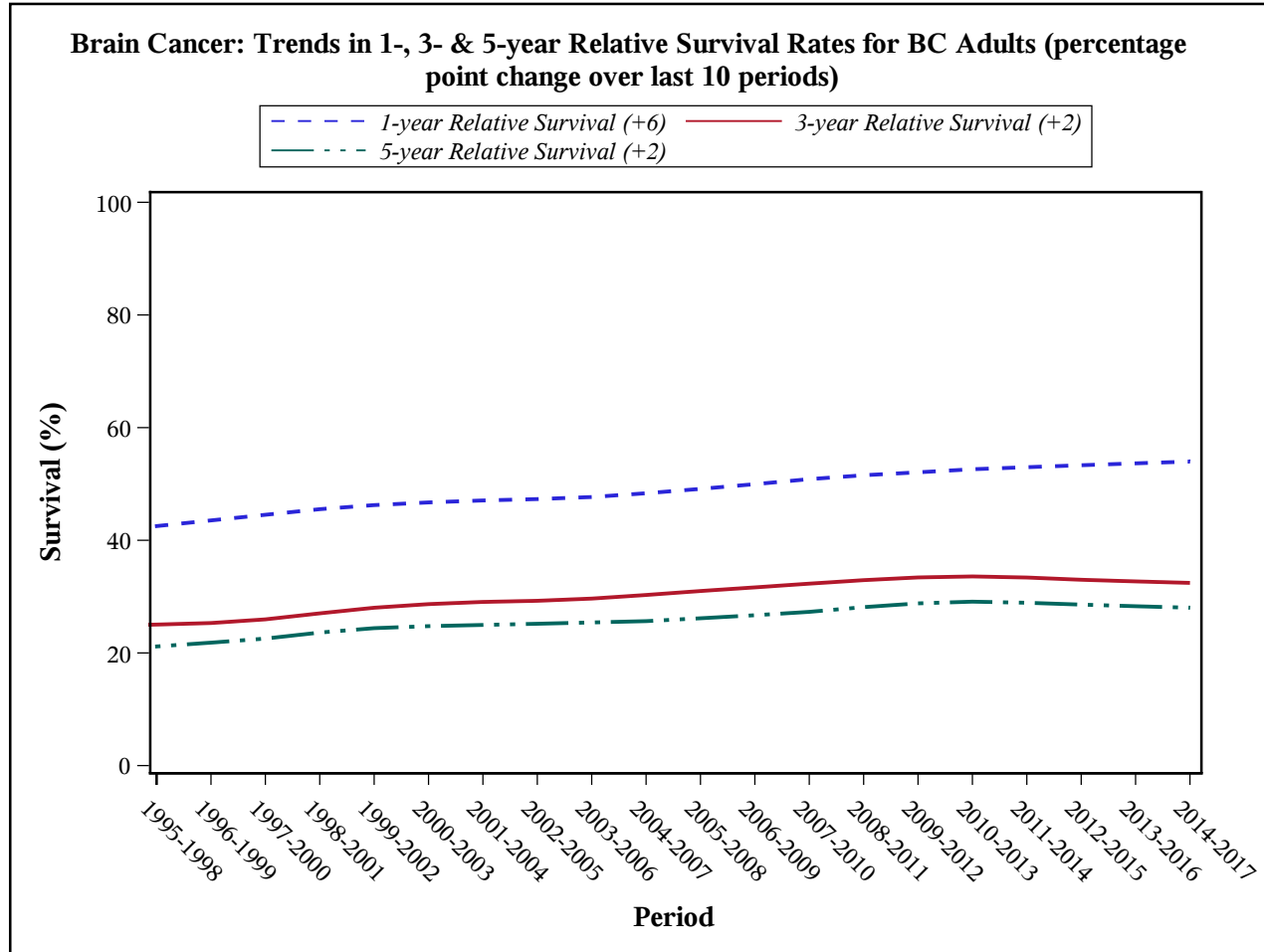
\* The end years of the periods in the plot.

Please refer to the [Introduction and Technical Notes](#) for further information.

Data Source: BC Cancer Registry Date Retrieved: 17DEC2019 Analysis by: Cancer Surveillance and Outcomes, Data & Analytics

**Brain Cancer**

**Cancer Relative Survival Rate Trend for BC Adults, 1998 - 2017\***



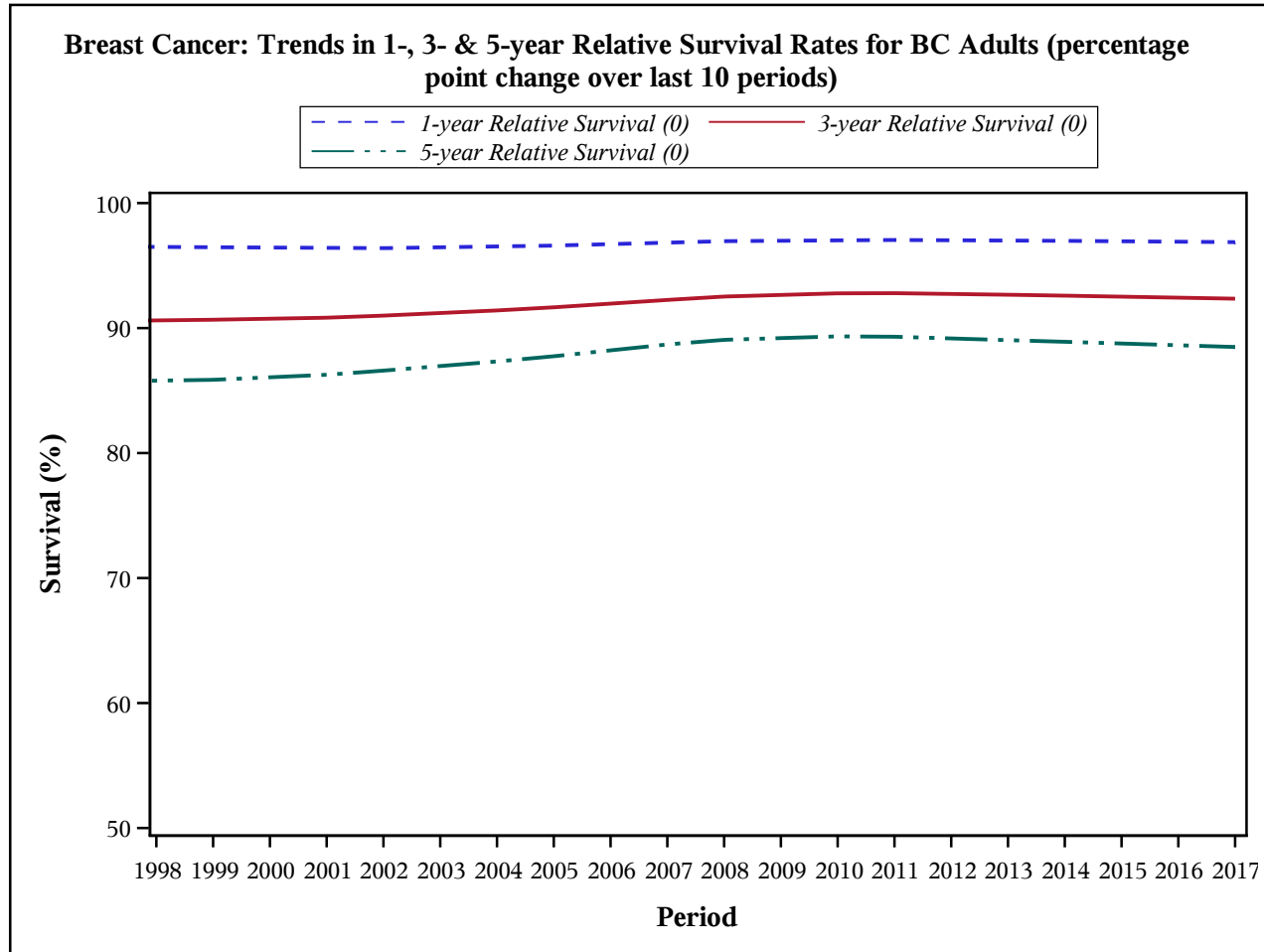
\* The end years of the periods in the plot.

Please refer to the [Introduction and Technical Notes](#) for further information.

Data Source: BC Cancer Registry Date Retrieved: 17DEC2019 Analysis by: Cancer Surveillance and Outcomes, Data & Analytics

**Breast Cancer**

**Cancer Relative Survival Rate Trend for BC Adults, 1998 - 2017\***



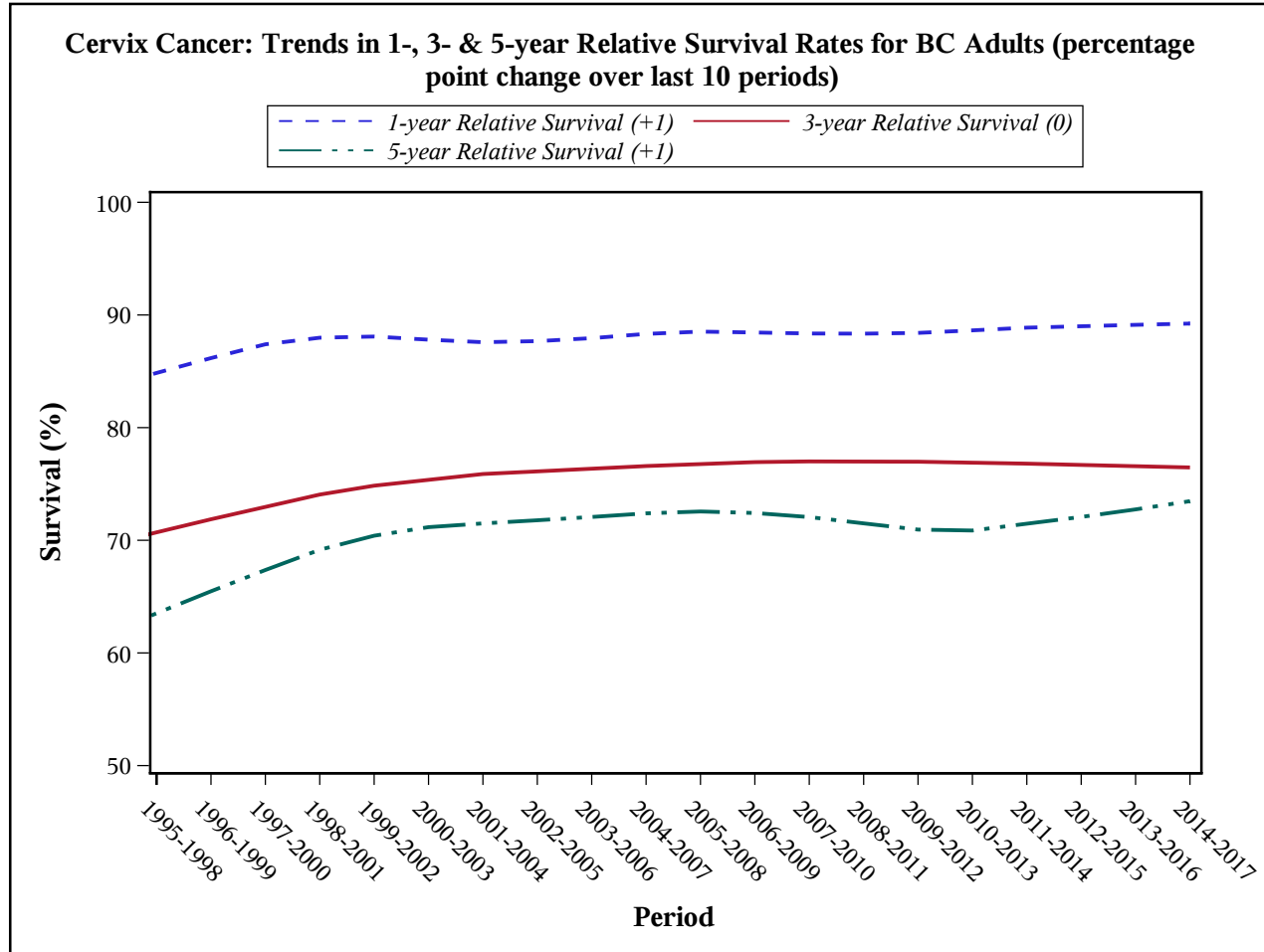
\* The end years of the periods in the plot.

Please refer to the [Introduction and Technical Notes](#) for further information.

Data Source: BC Cancer Registry Date Retrieved: 17DEC2019 Analysis by: Cancer Surveillance and Outcomes, Data & Analytics

**Cervix Cancer**

**Cancer Relative Survival Rate Trend for BC Adults, 1998 - 2017\***



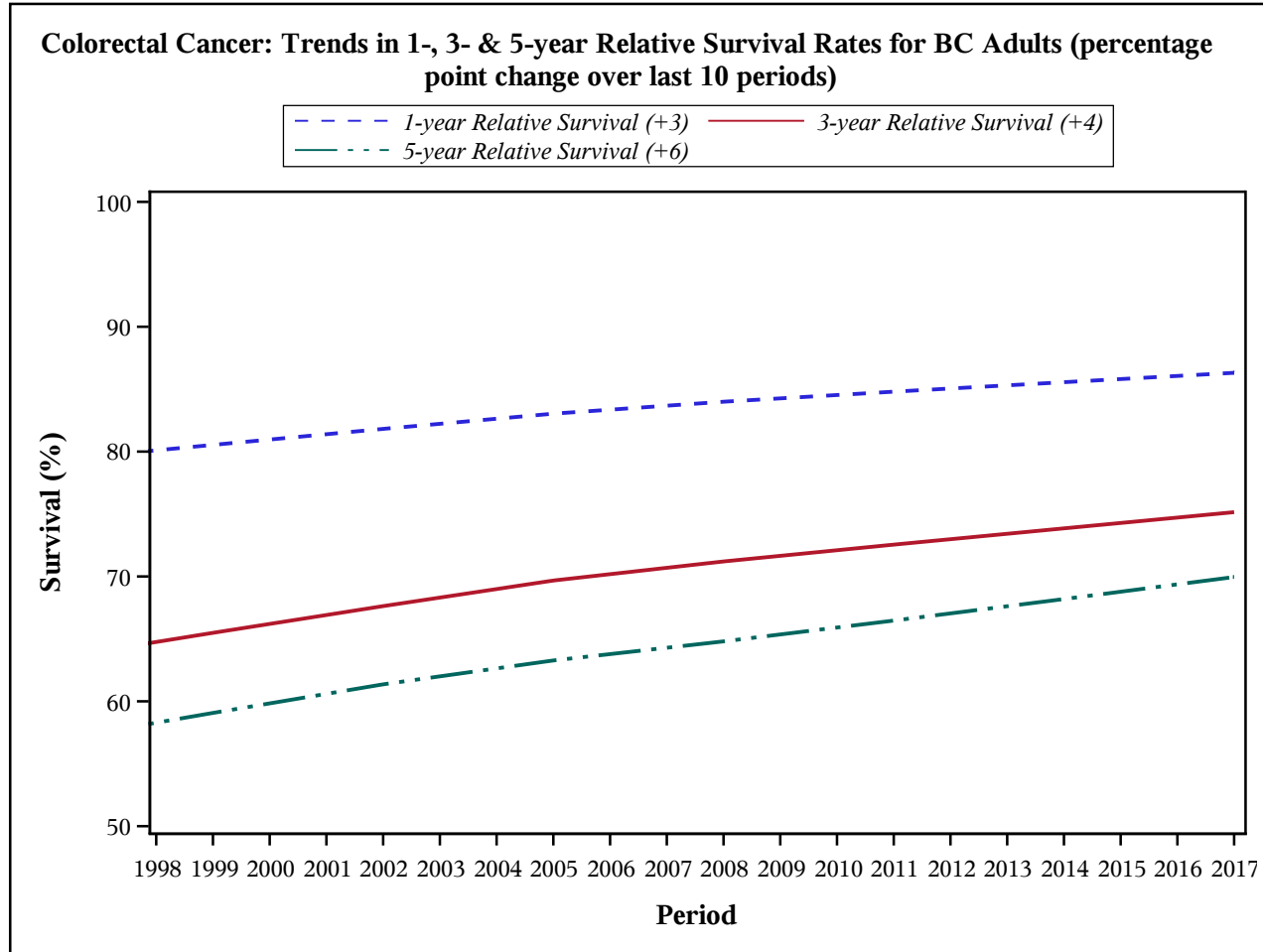
\* The end years of the periods in the plot.

Please refer to the [Introduction and Technical Notes](#) for further information.

Data Source: BC Cancer Registry Date Retrieved: 17DEC2019 Analysis by: Cancer Surveillance and Outcomes, Data & Analytics

**Colorectal Cancer**

**Cancer Relative Survival Rate Trend for BC Adults, 1998 - 2017\***



\* The end years of the periods in the plot.

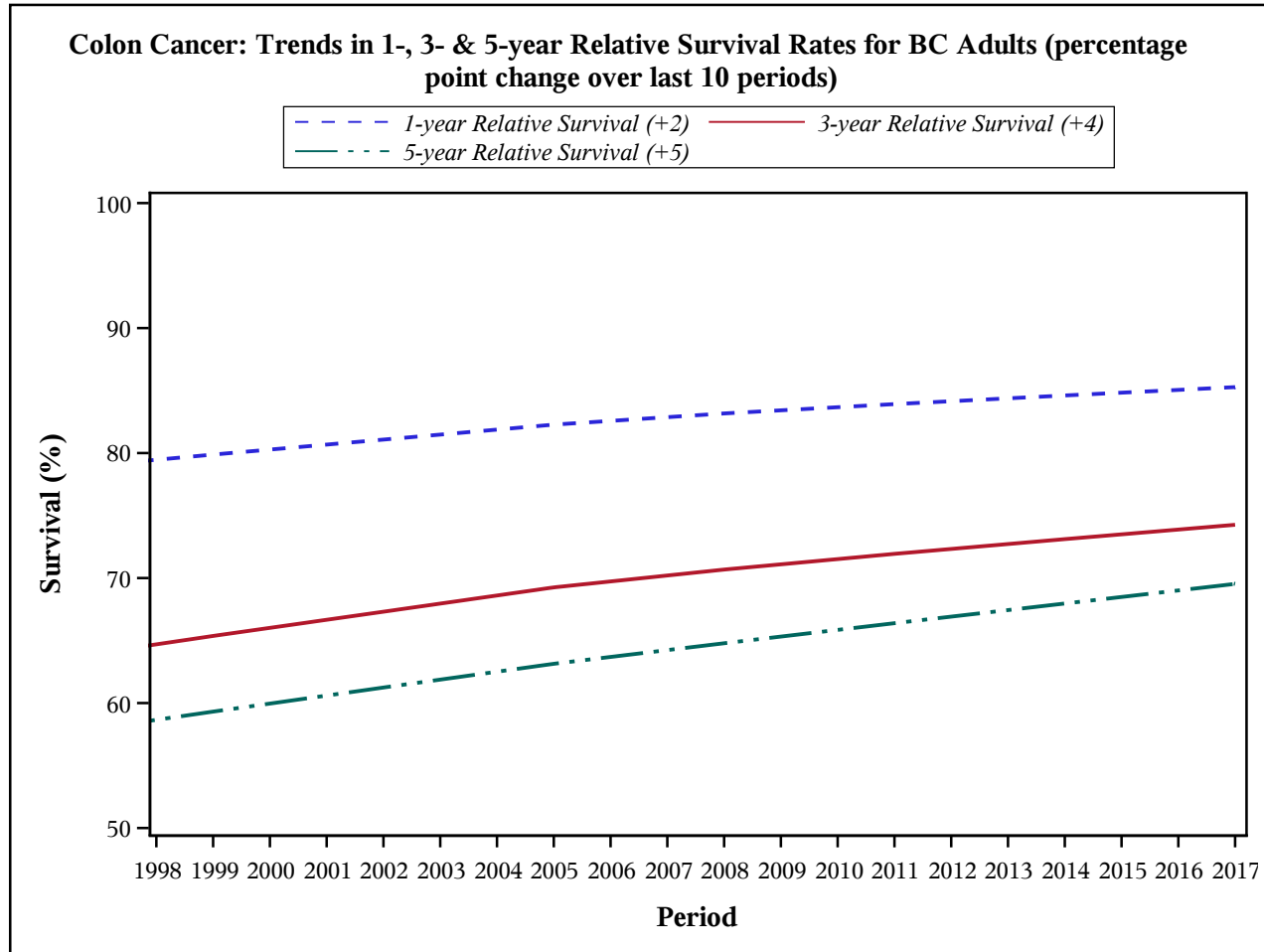
Please refer to the [Introduction and Technical Notes](#) for further information.

Data Source: BC Cancer Registry Date Retrieved: 17DEC2019 Analysis by: Cancer Surveillance and Outcomes, Data & Analytics



**Colon Cancer**

**Cancer Relative Survival Rate Trend for BC Adults, 1998 - 2017\***



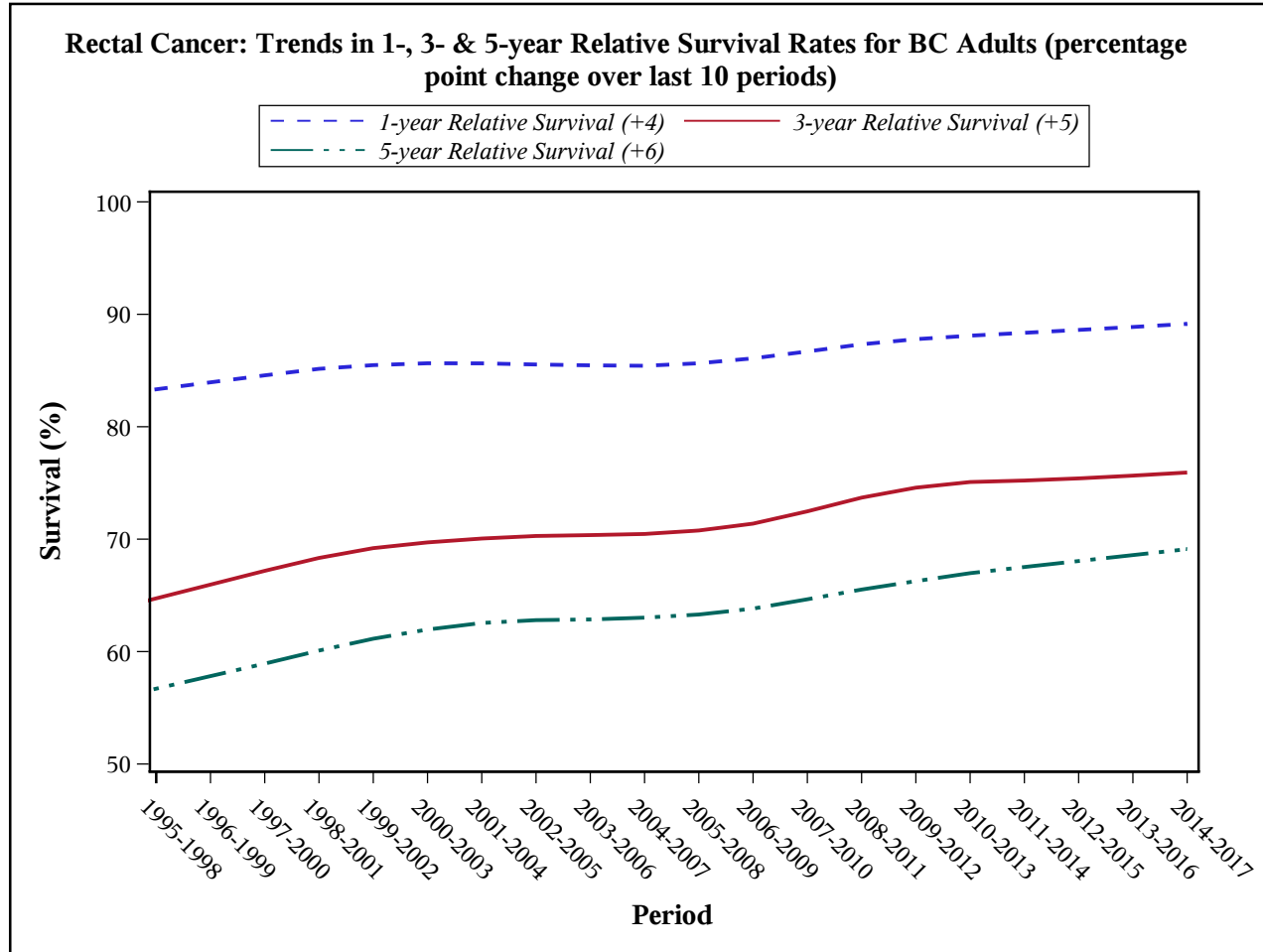
\* The end years of the periods in the plot.

Please refer to the [Introduction and Technical Notes](#) for further information.

Data Source: BC Cancer Registry Date Retrieved: 17DEC2019 Analysis by: Cancer Surveillance and Outcomes, Data & Analytics

**Rectal Cancer**

**Cancer Relative Survival Rate Trend for BC Adults, 1998 - 2017\***



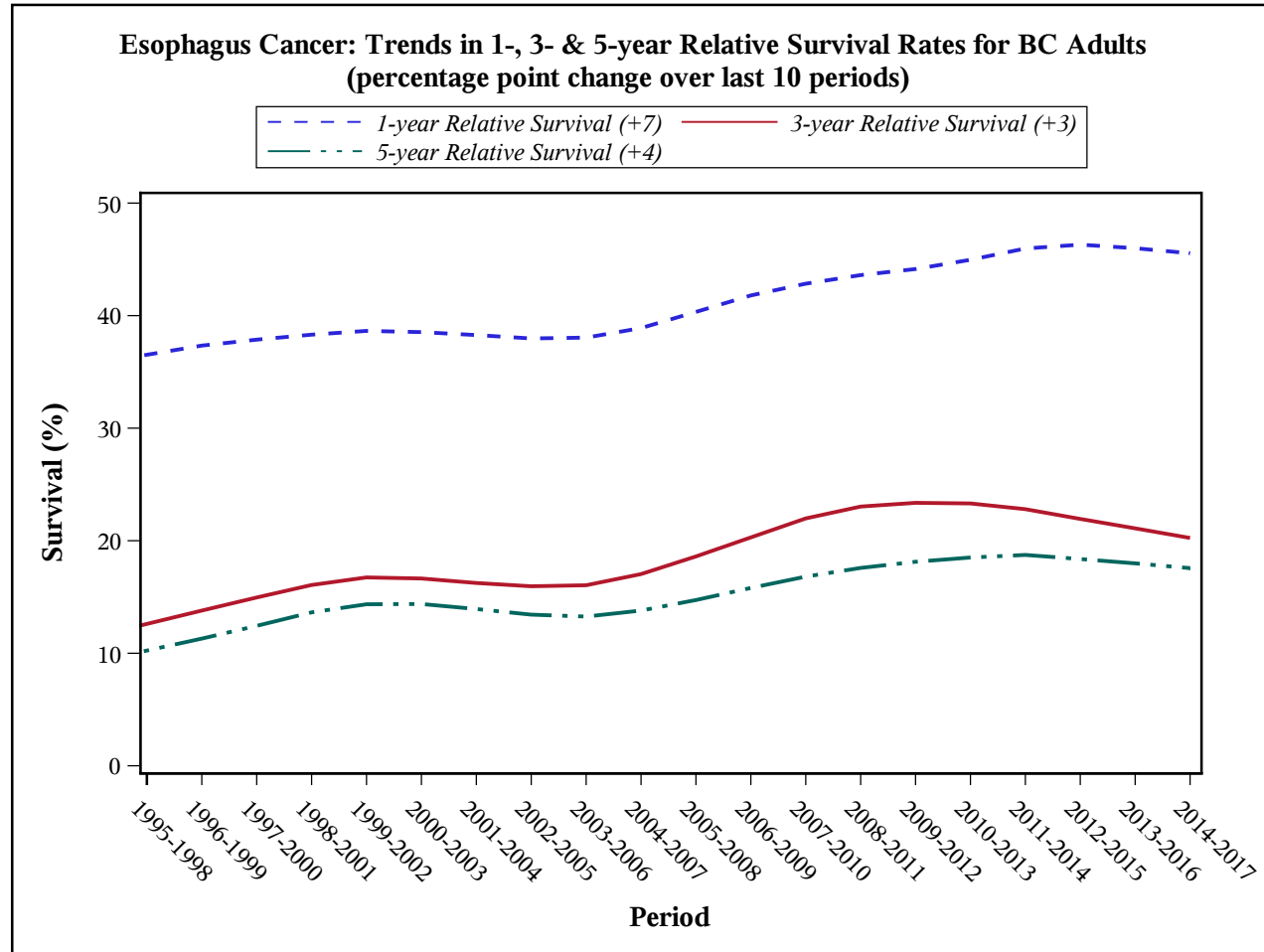
\* The end years of the periods in the plot.

Please refer to the [Introduction and Technical Notes](#) for further information.

Data Source: BC Cancer Registry Date Retrieved: 17DEC2019 Analysis by: Cancer Surveillance and Outcomes, Data & Analytics

**Esophagus Cancer**

**Cancer Relative Survival Rate Trend for BC Adults, 1998 - 2017\***



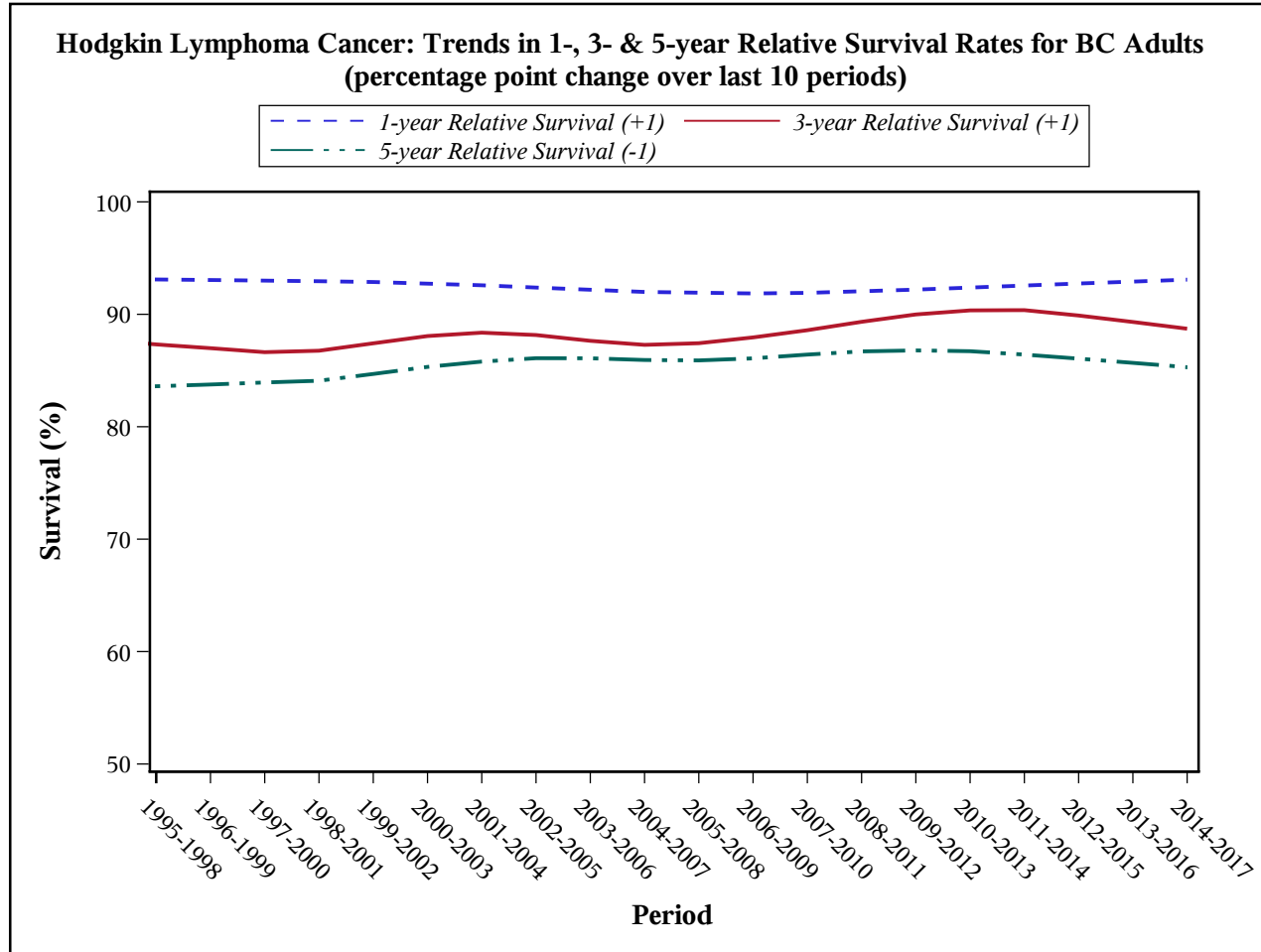
\* The end years of the periods in the plot.

Please refer to the [Introduction and Technical Notes](#) for further information.

Data Source: BC Cancer Registry Date Retrieved: 17DEC2019 Analysis by: Cancer Surveillance and Outcomes, Data & Analytics

**Hodgkin Lymphoma Cancer**

**Cancer Relative Survival Rate Trend for BC Adults, 1998 - 2017\***



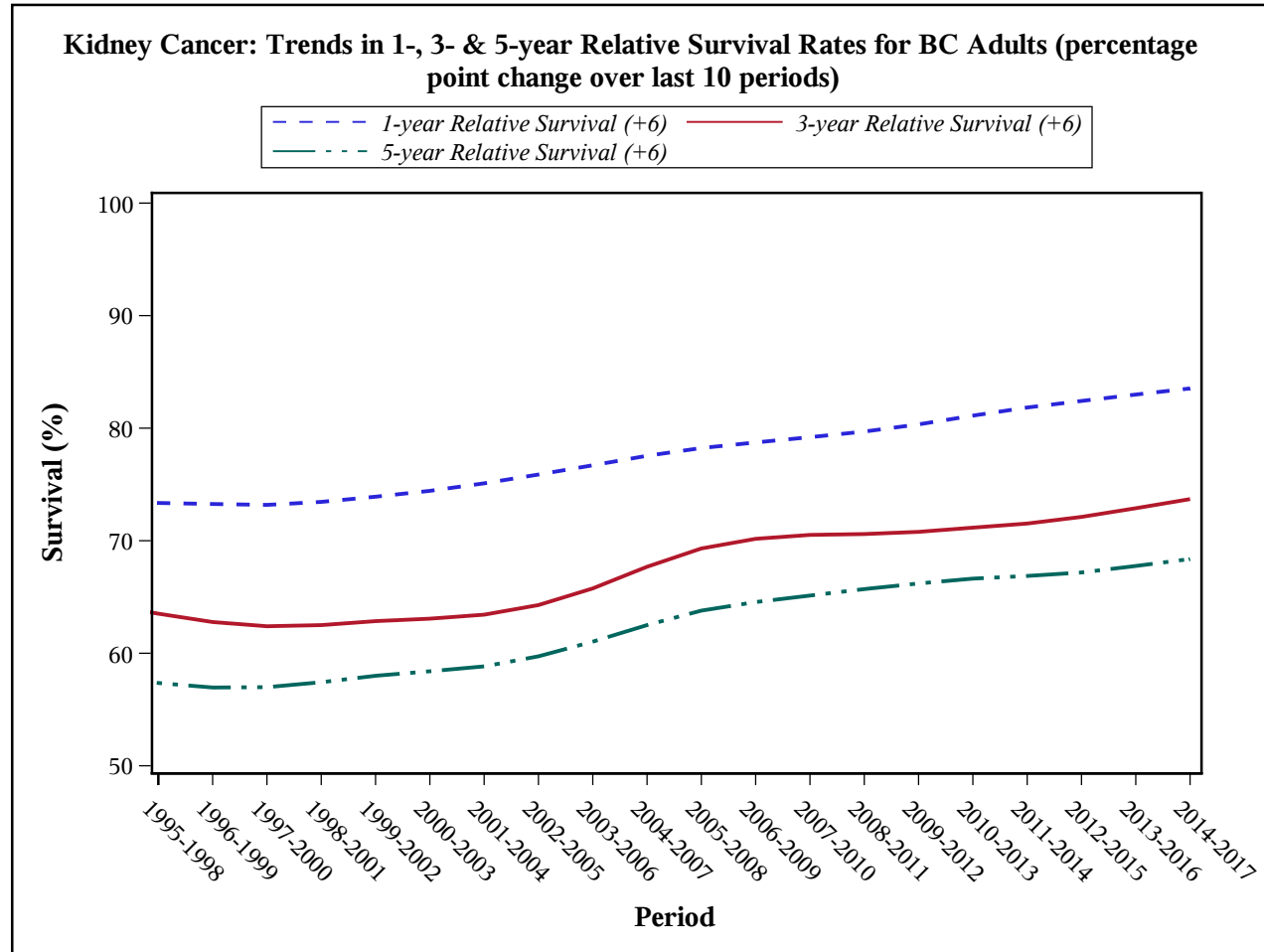
\* The end years of the periods in the plot.

Please refer to the [Introduction and Technical Notes](#) for further information.

Data Source: BC Cancer Registry Date Retrieved: 17DEC2019 Analysis by: Cancer Surveillance and Outcomes, Data & Analytics

**Kidney Cancer**

**Cancer Relative Survival Rate Trend for BC Adults, 1998 - 2017\***



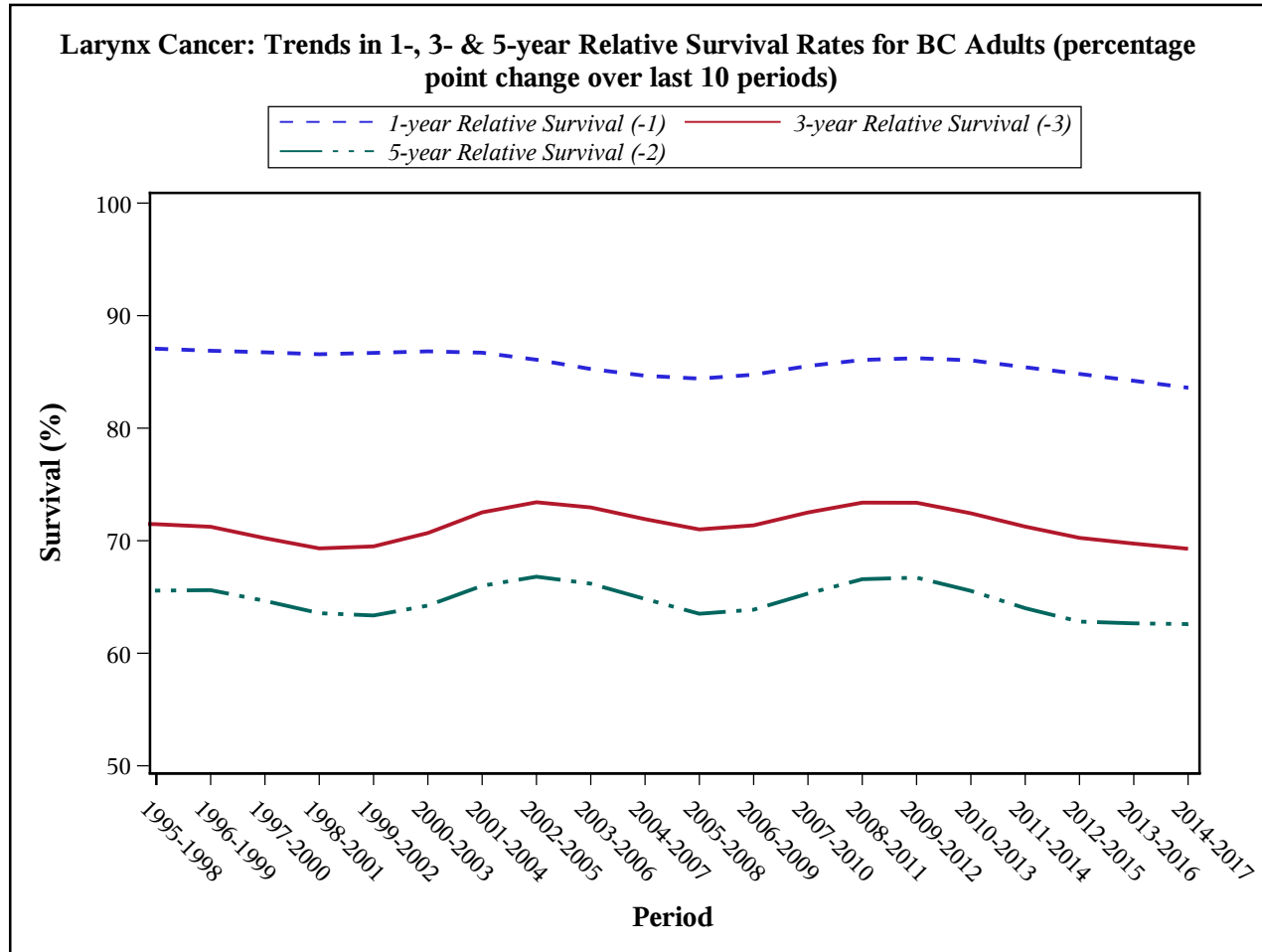
\* The end years of the periods in the plot.

Please refer to the [Introduction and Technical Notes](#) for further information.

Data Source: BC Cancer Registry Date Retrieved: 17DEC2019 Analysis by: Cancer Surveillance and Outcomes, Data & Analytics

**Larynx Cancer**

**Cancer Relative Survival Rate Trend for BC Adults, 1998 - 2017\***



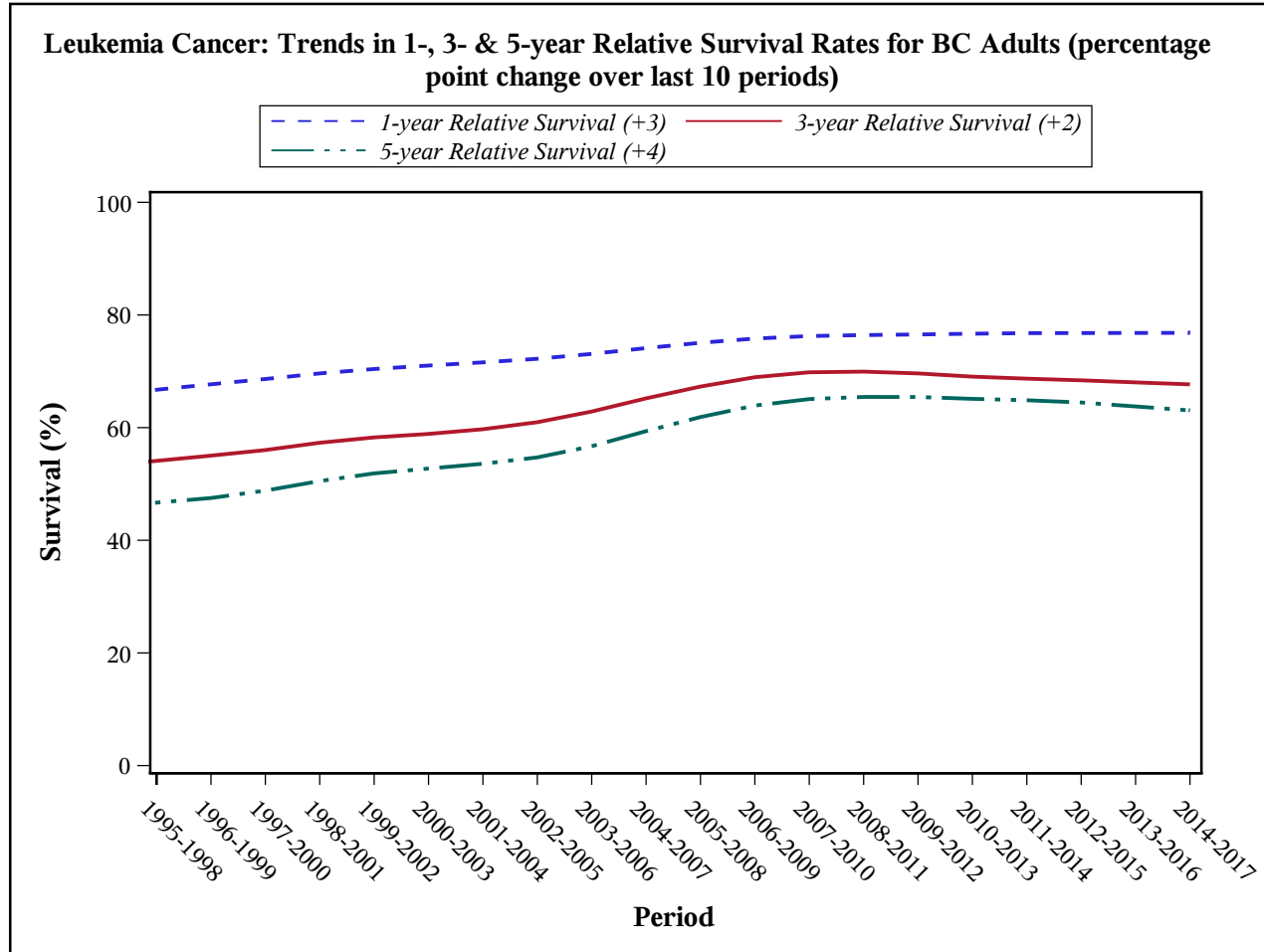
\* The end years of the periods in the plot.

Please refer to the [Introduction and Technical Notes](#) for further information.

Data Source: BC Cancer Registry Date Retrieved: 17DEC2019 Analysis by: Cancer Surveillance and Outcomes, Data & Analytics

**Leukemia Cancer**

**Cancer Relative Survival Rate Trend for BC Adults, 1998 - 2017\***



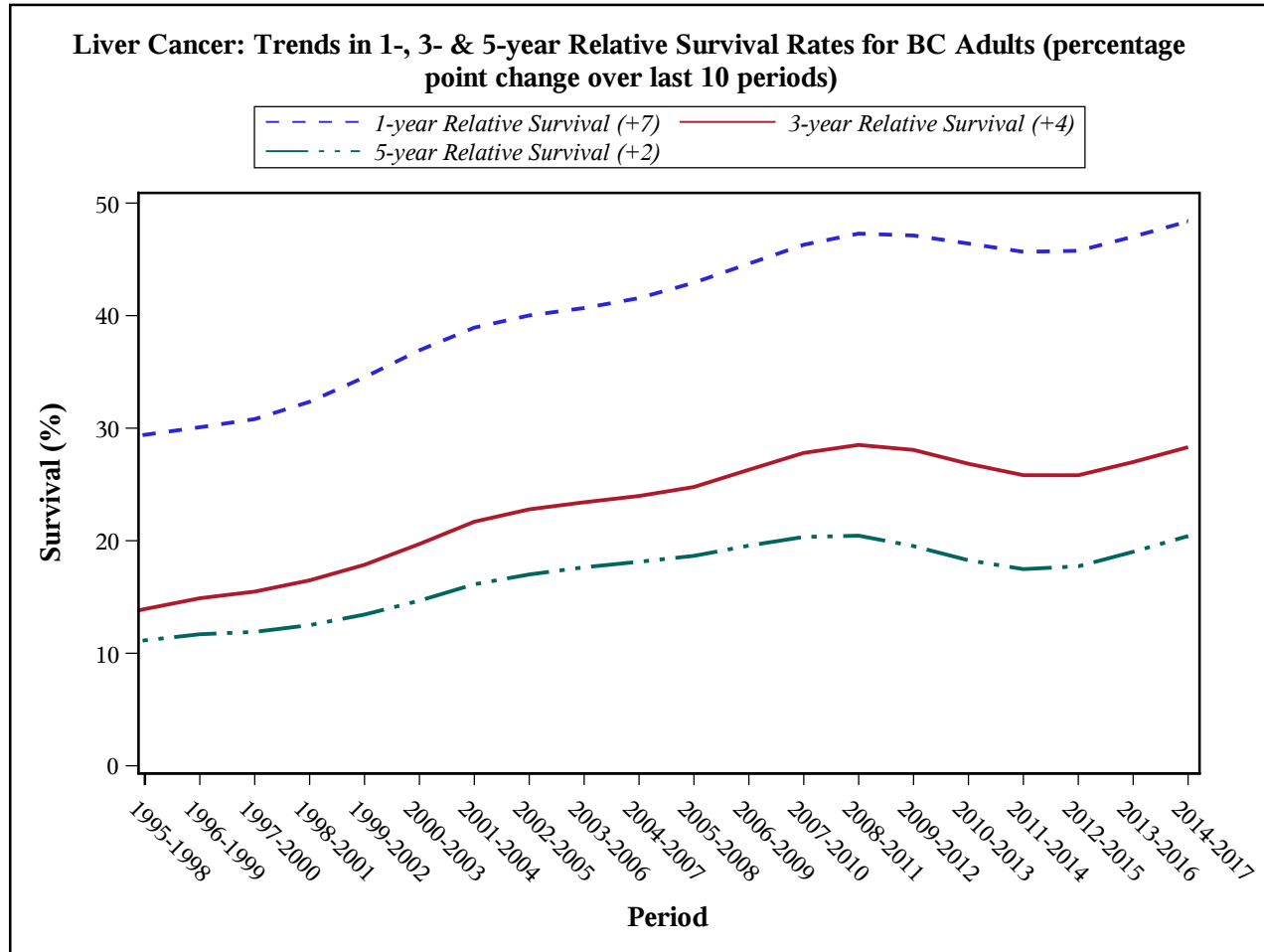
\* The end years of the periods in the plot.

Please refer to the [Introduction and Technical Notes](#) for further information.

Data Source: BC Cancer Registry Date Retrieved: 17DEC2019 Analysis by: Cancer Surveillance and Outcomes, Data & Analytics

**Liver Cancer**

**Cancer Relative Survival Rate Trend for BC Adults, 1998 - 2017\***



\* The end years of the periods in the plot.

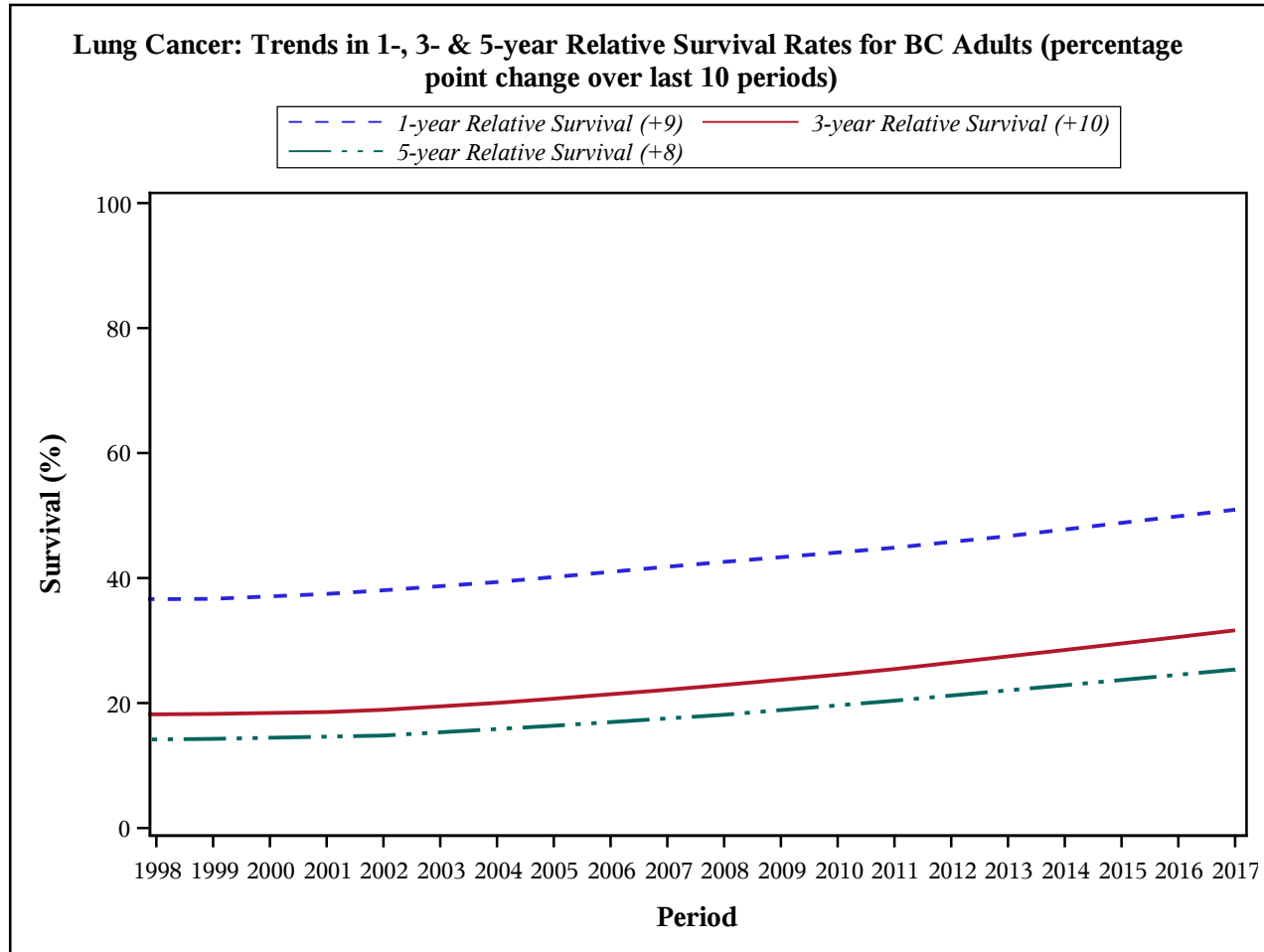
Please refer to the [Introduction and Technical Notes](#) for further information.

Data Source: BC Cancer Registry Date Retrieved: 17DEC2019 Analysis by: Cancer Surveillance and Outcomes, Data & Analytics



**Lung Cancer**

**Cancer Relative Survival Rate Trend for BC Adults, 1998 - 2017\***



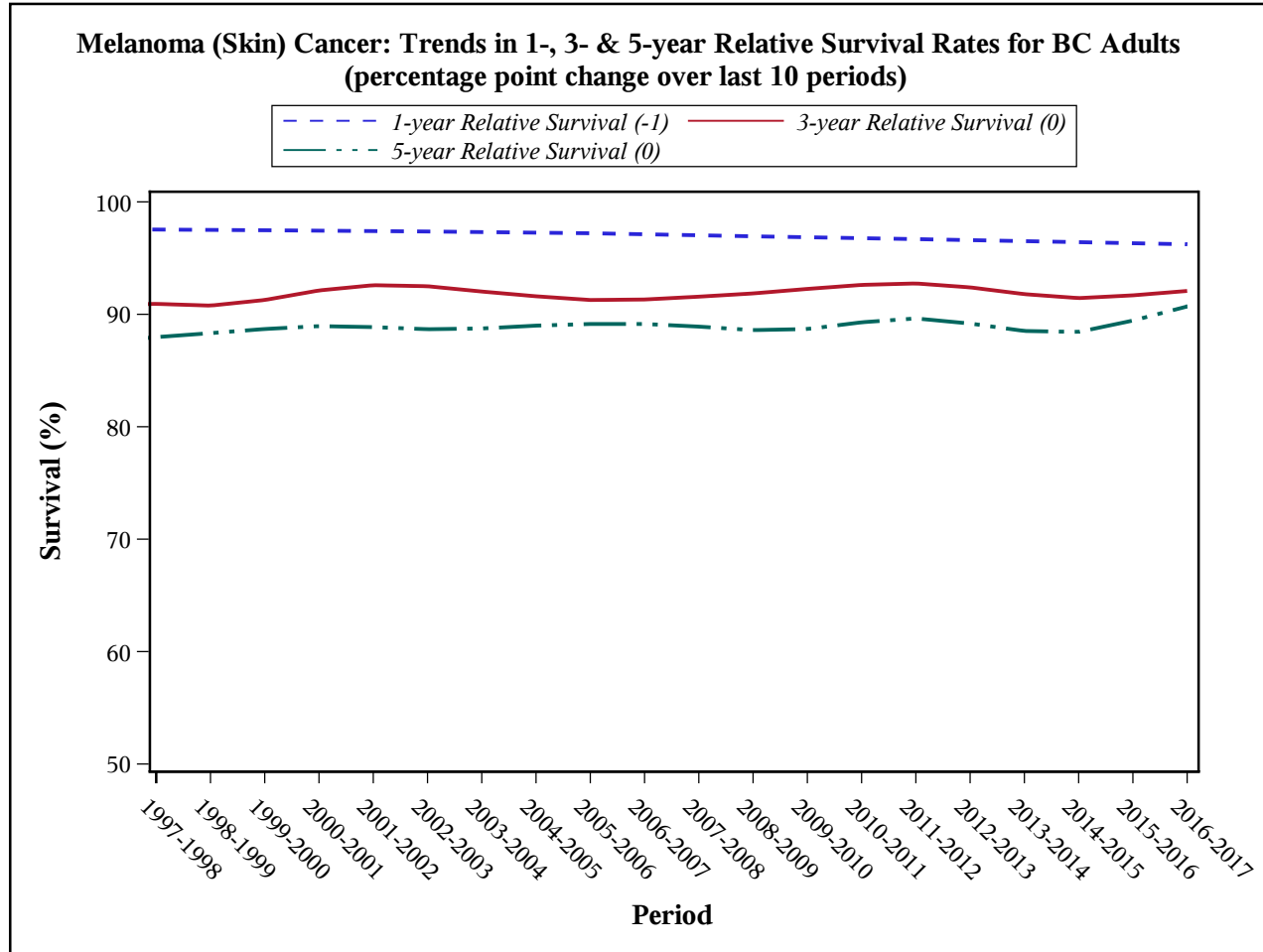
\* The end years of the periods in the plot.

Please refer to the [Introduction and Technical Notes](#) for further information.

Data Source: BC Cancer Registry Date Retrieved: 17DEC2019 Analysis by: Cancer Surveillance and Outcomes, Data & Analytics

**Melanoma (Skin) Cancer**

**Cancer Relative Survival Rate Trend for BC Adults, 1998 - 2017\***



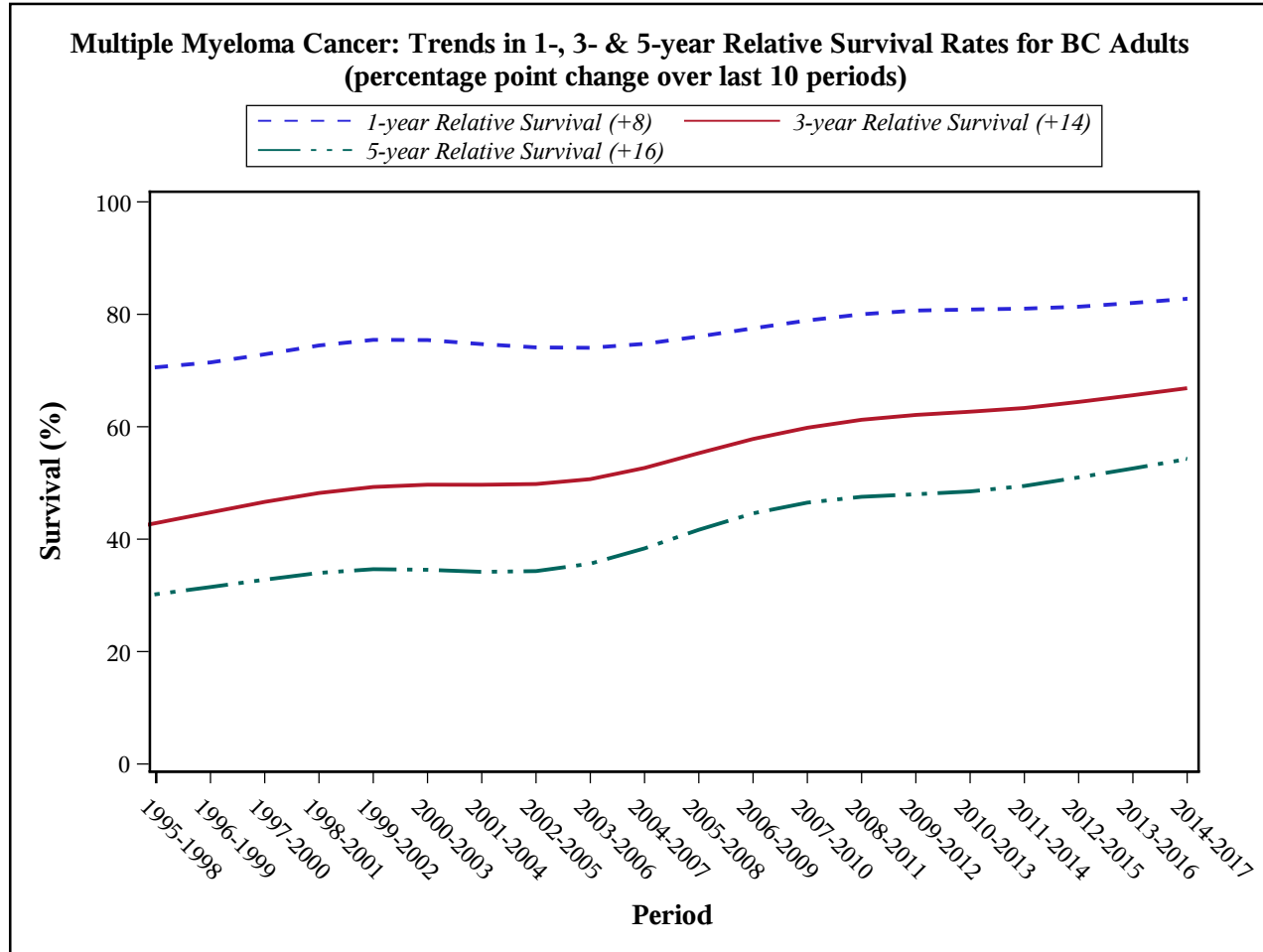
\* The end years of the periods in the plot.

Please refer to the [Introduction and Technical Notes](#) for further information.

Data Source: BC Cancer Registry Date Retrieved: 17DEC2019 Analysis by: Cancer Surveillance and Outcomes, Data & Analytics

**Multiple Myeloma Cancer**

**Cancer Relative Survival Rate Trend for BC Adults, 1998 - 2017\***



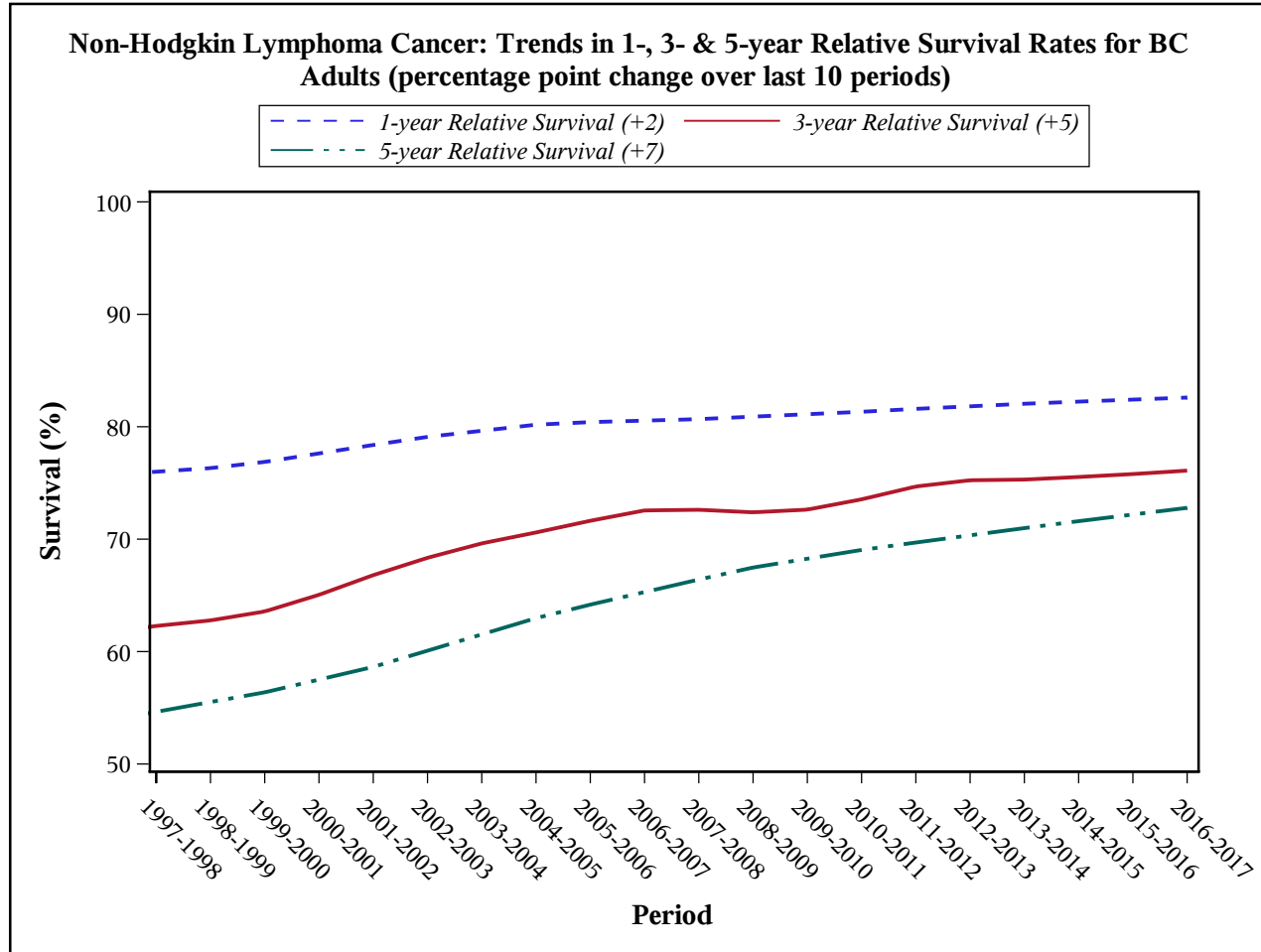
\* The end years of the periods in the plot.

Please refer to the [Introduction and Technical Notes](#) for further information.

Data Source: BC Cancer Registry Date Retrieved: 17DEC2019 Analysis by: Cancer Surveillance and Outcomes, Data & Analytics

**Non-Hodgkin Lymphoma Cancer**

**Cancer Relative Survival Rate Trend for BC Adults, 1998 - 2017\***



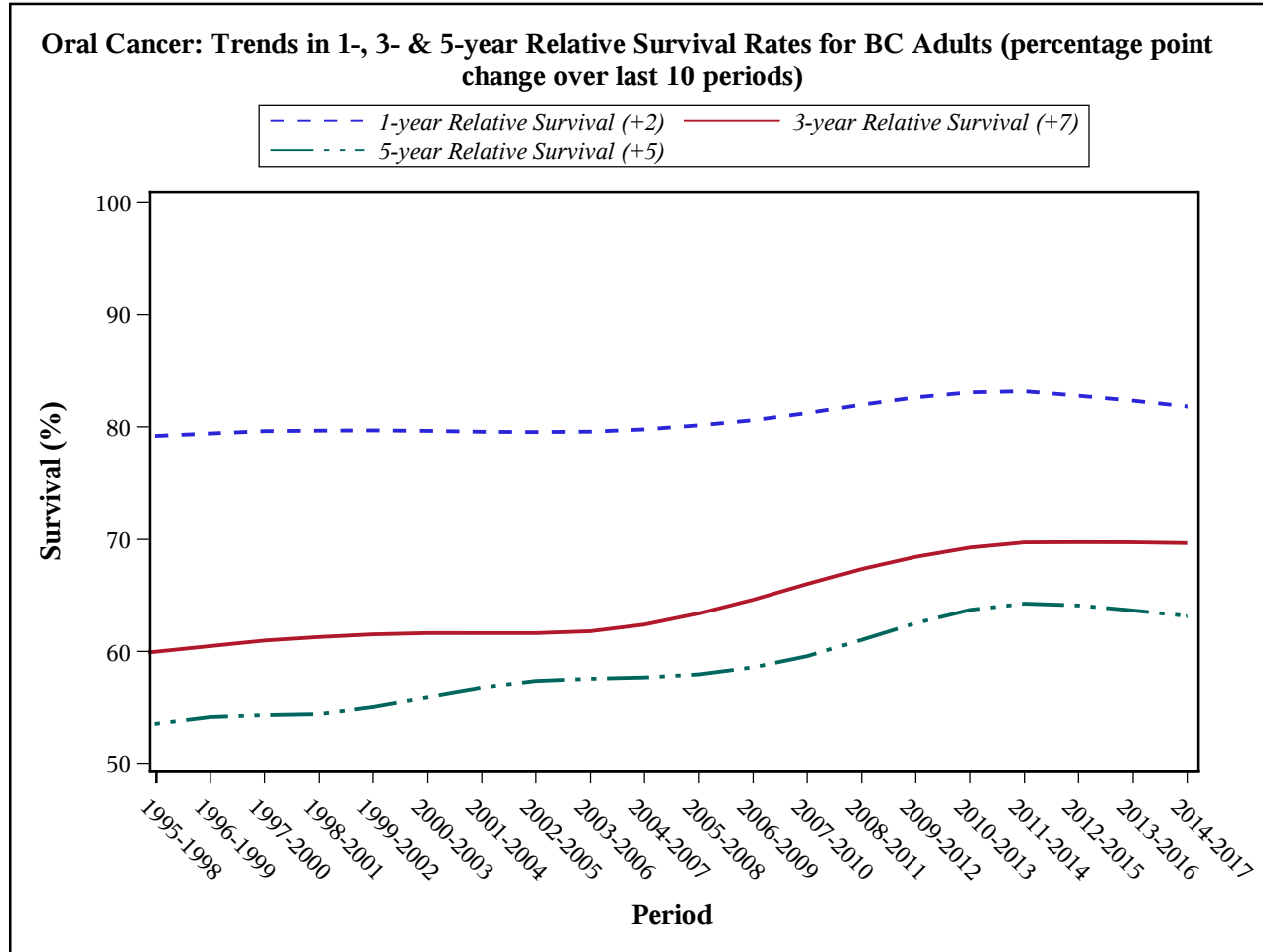
\* The end years of the periods in the plot.

Please refer to the [Introduction and Technical Notes](#) for further information.

Data Source: BC Cancer Registry Date Retrieved: 17DEC2019 Analysis by: Cancer Surveillance and Outcomes, Data & Analytics

**Oral Cancer**

**Cancer Relative Survival Rate Trend for BC Adults, 1998 - 2017\***



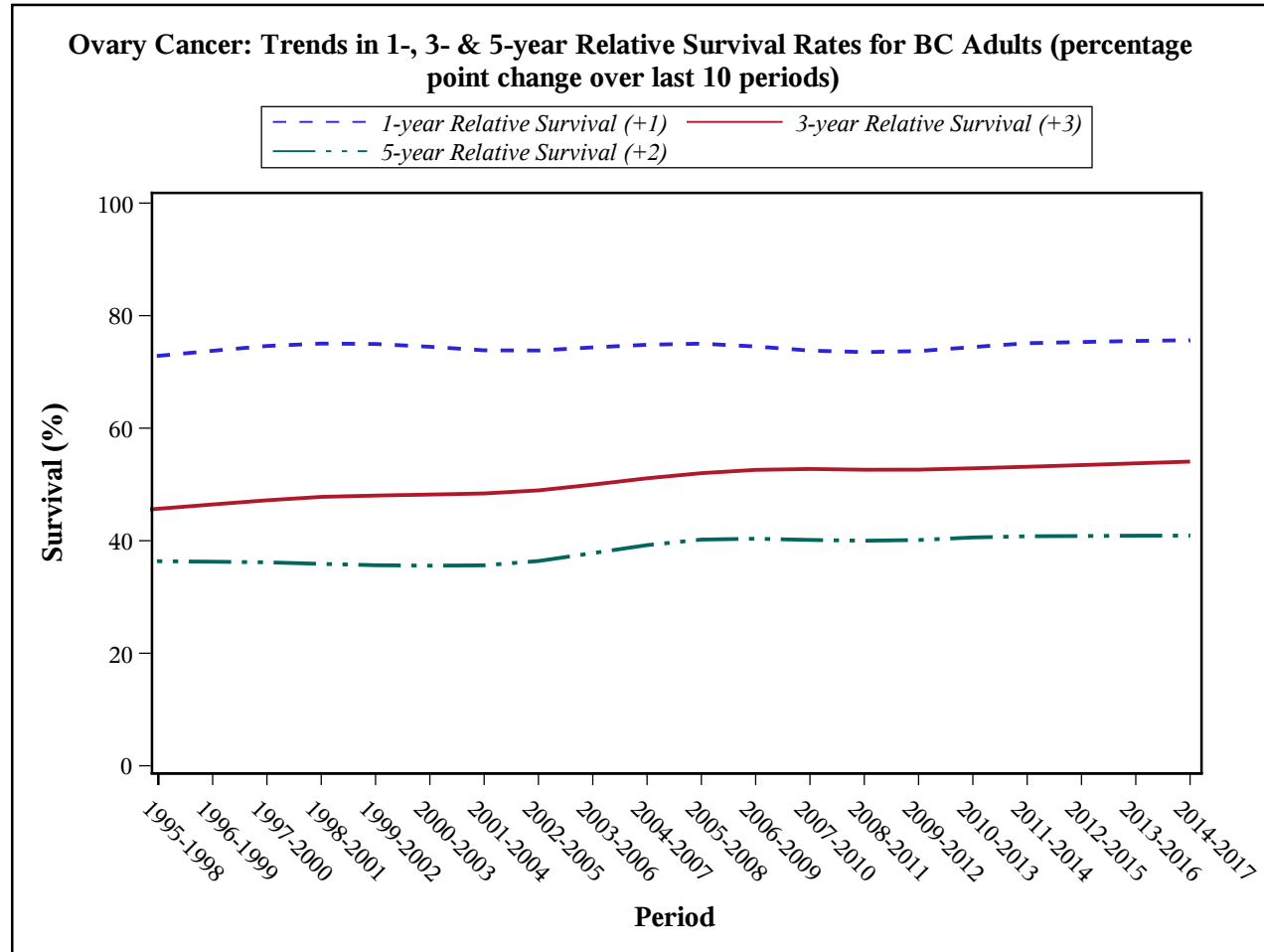
\* The end years of the periods in the plot.

Please refer to the [Introduction and Technical Notes](#) for further information.

Data Source: BC Cancer Registry Date Retrieved: 17DEC2019 Analysis by: Cancer Surveillance and Outcomes, Data & Analytics

**Ovary Cancer**

**Cancer Relative Survival Rate Trend for BC Adults, 1998 - 2017\***



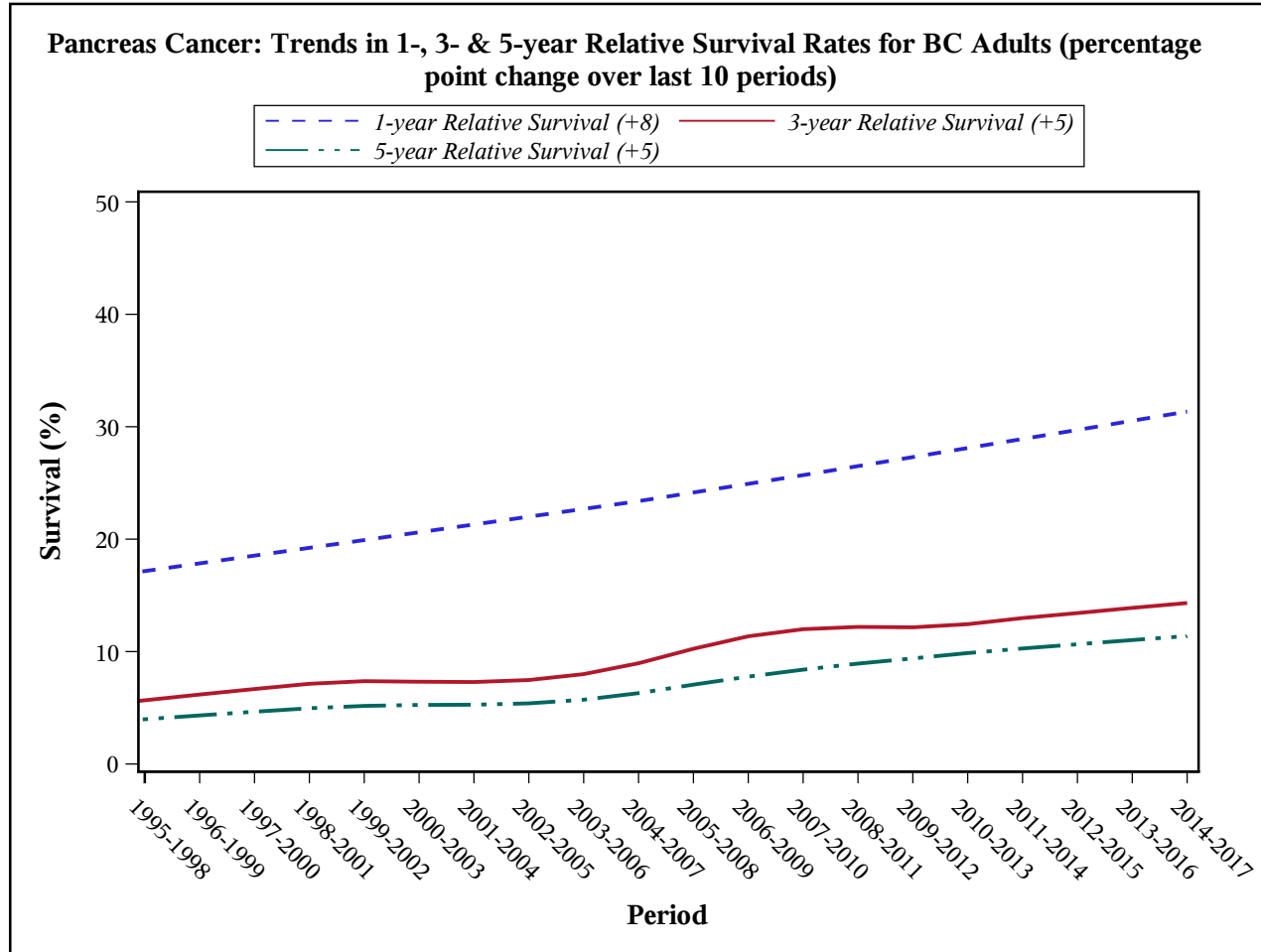
\* The end years of the periods in the plot.

Please refer to the [Introduction and Technical Notes](#) for further information.

Data Source: BC Cancer Registry Date Retrieved: 17DEC2019 Analysis by: Cancer Surveillance and Outcomes, Data & Analytics

**Pancreas Cancer**

**Cancer Relative Survival Rate Trend for BC Adults, 1998 - 2017\***



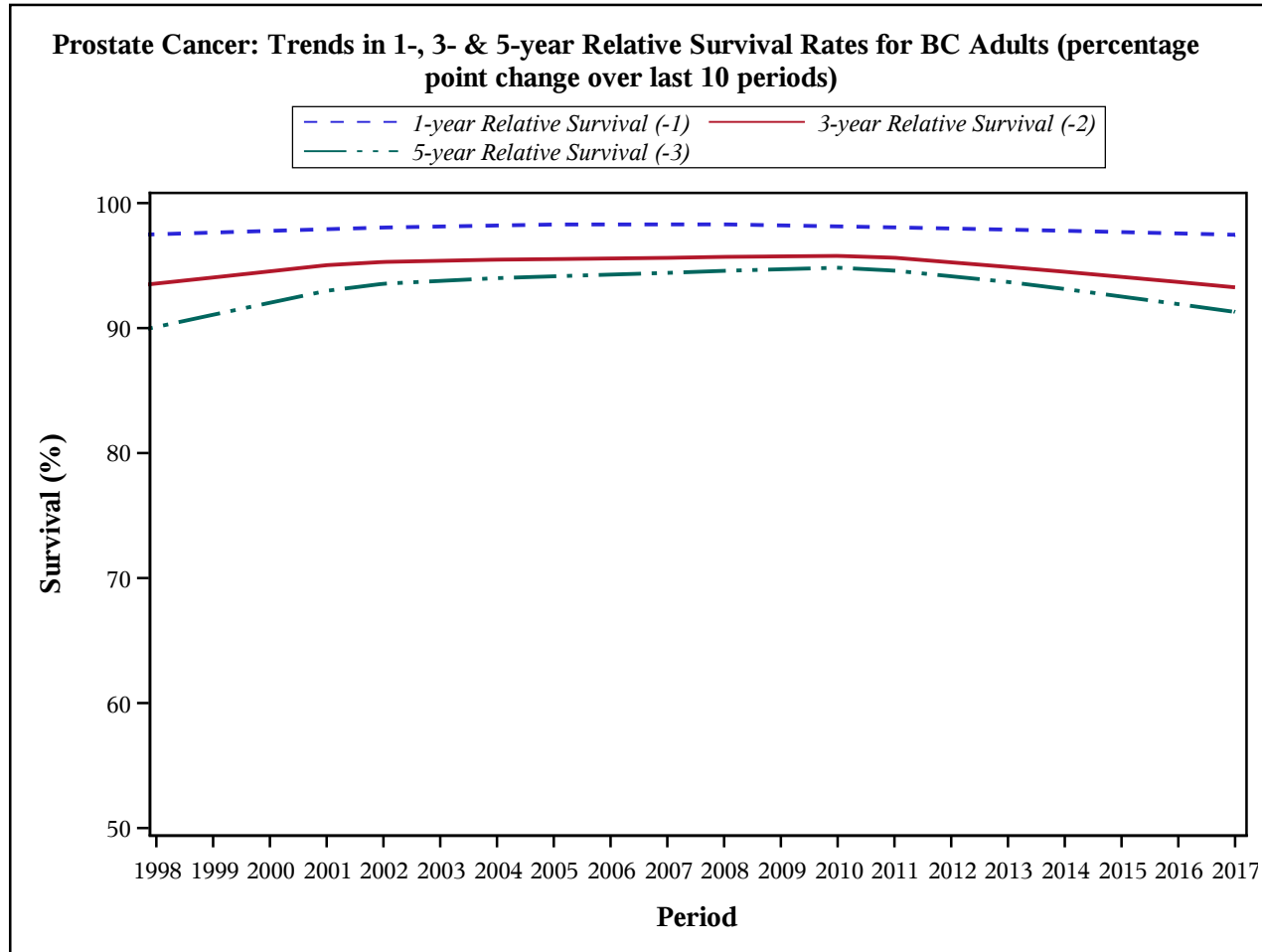
\* The end years of the periods in the plot.

Please refer to the [Introduction and Technical Notes](#) for further information.

Data Source: BC Cancer Registry Date Retrieved: 17DEC2019 Analysis by: Cancer Surveillance and Outcomes, Data & Analytics

**Prostate Cancer**

**Cancer Relative Survival Rate Trend for BC Adults, 1998 - 2017\***



\* The end years of the periods in the plot.

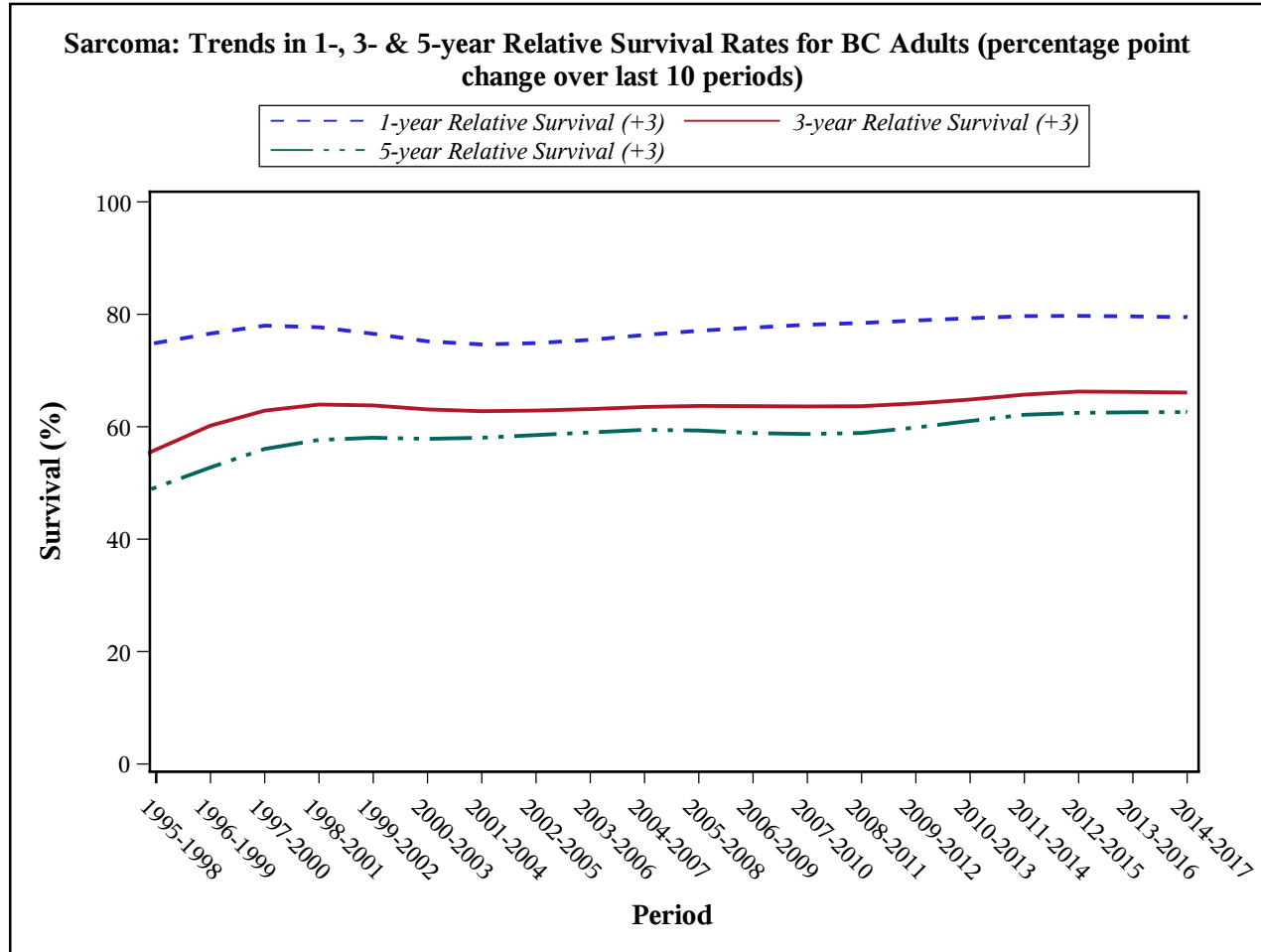
Please refer to the [Introduction and Technical Notes](#) for further information.

Data Source: BC Cancer Registry Date Retrieved: 17DEC2019 Analysis by: Cancer Surveillance and Outcomes, Data & Analytics



**Sarcoma**

**Cancer Relative Survival Rate Trend for BC Adults, 1998 - 2017\***



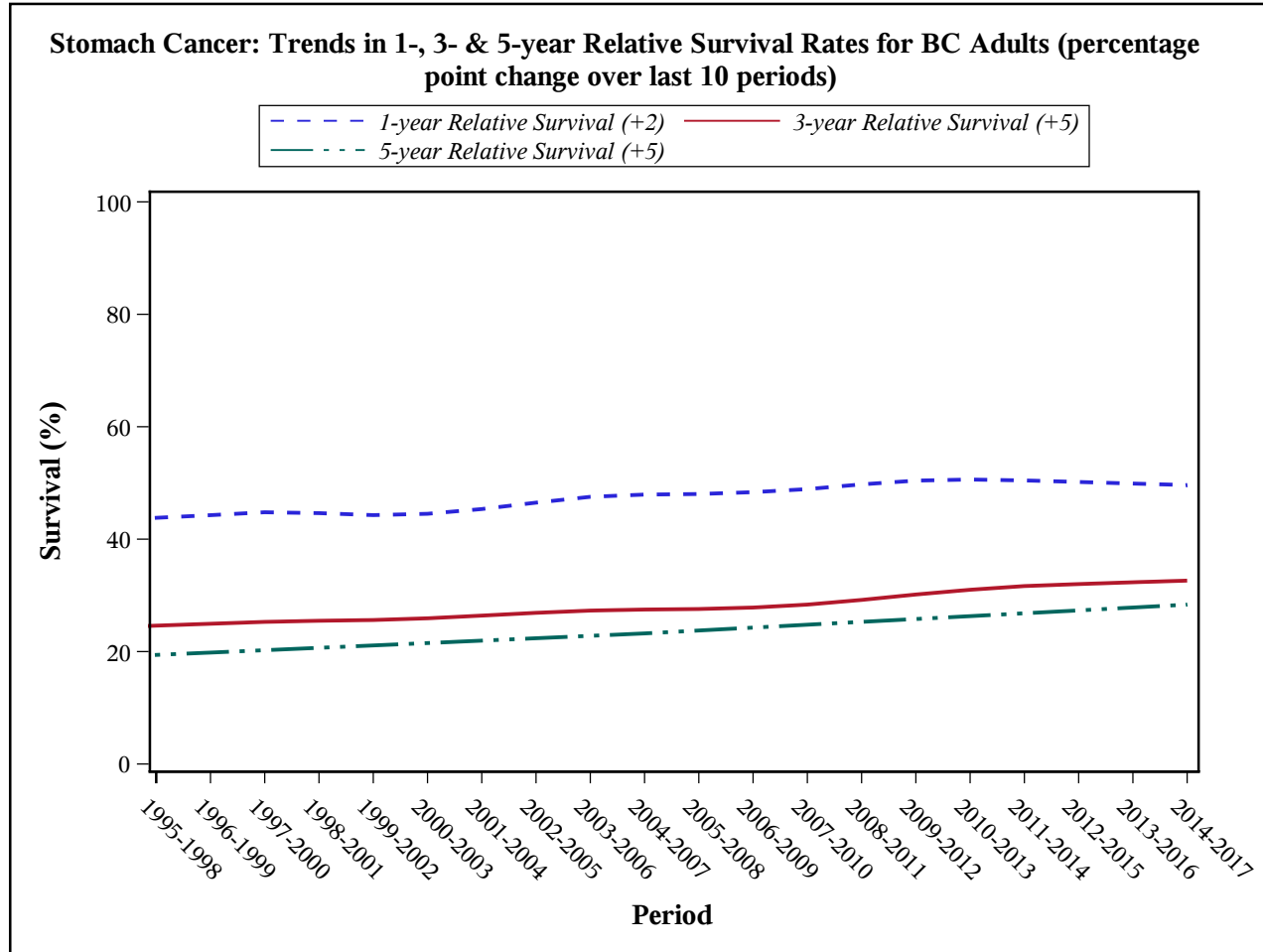
\* The end years of the periods in the plot.

Please refer to the [Introduction and Technical Notes](#) for further information.

Data Source: BC Cancer Registry Date Retrieved: 17DEC2019 Analysis by: Cancer Surveillance and Outcomes, Data & Analytics

**Stomach Cancer**

**Cancer Relative Survival Rate Trend for BC Adults, 1998 - 2017\***



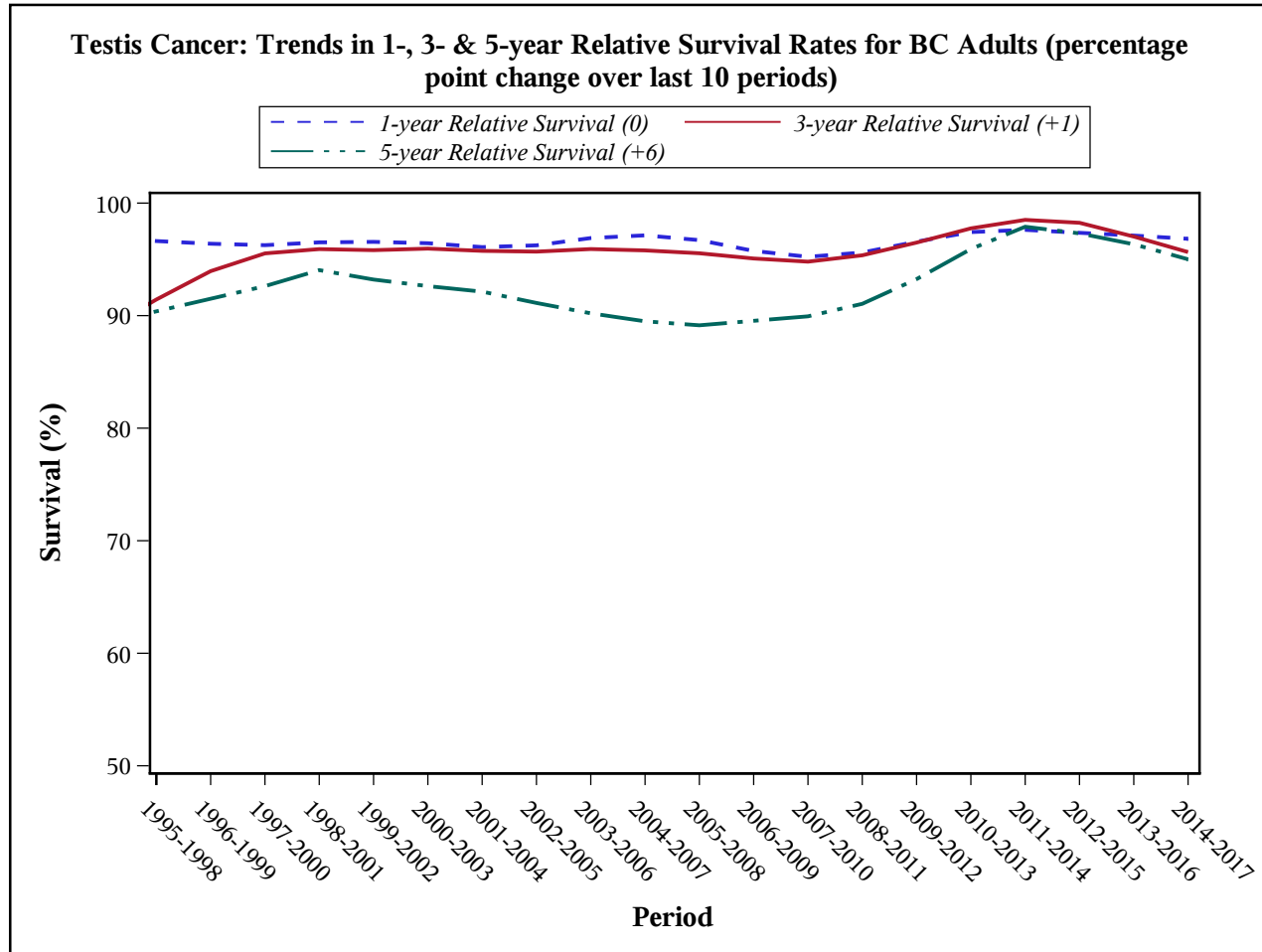
\* The end years of the periods in the plot.

Please refer to the [Introduction and Technical Notes](#) for further information.

Data Source: BC Cancer Registry Date Retrieved: 17DEC2019 Analysis by: Cancer Surveillance and Outcomes, Data & Analytics

**Testis Cancer**

**Cancer Relative Survival Rate Trend for BC Adults, 1998 - 2017\***



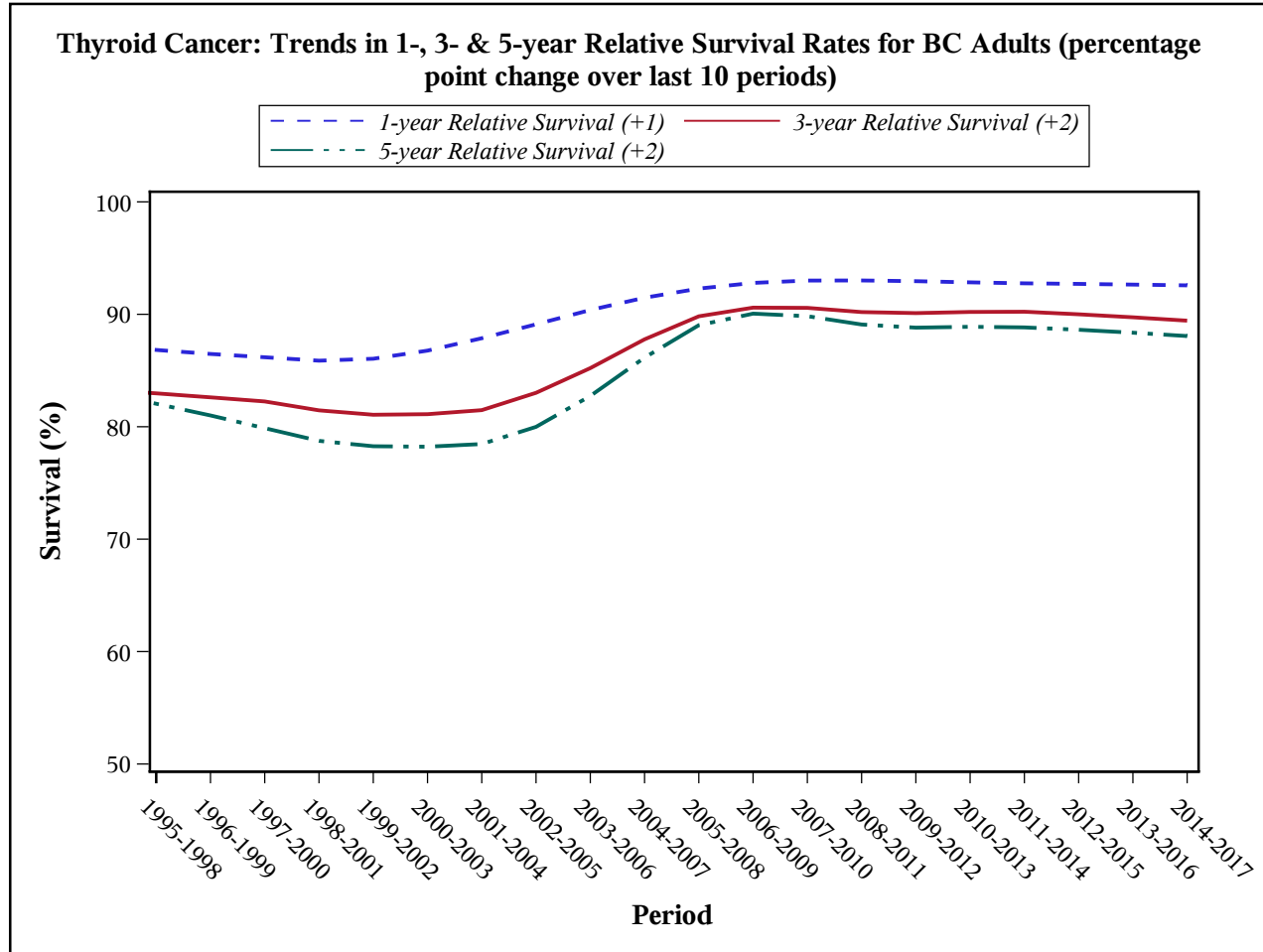
\* The end years of the periods in the plot.

Please refer to the [Introduction and Technical Notes](#) for further information.

Data Source: BC Cancer Registry Date Retrieved: 17DEC2019 Analysis by: Cancer Surveillance and Outcomes, Data & Analytics

**Thyroid Cancer**

**Cancer Relative Survival Rate Trend for BC Adults, 1998 - 2017\***



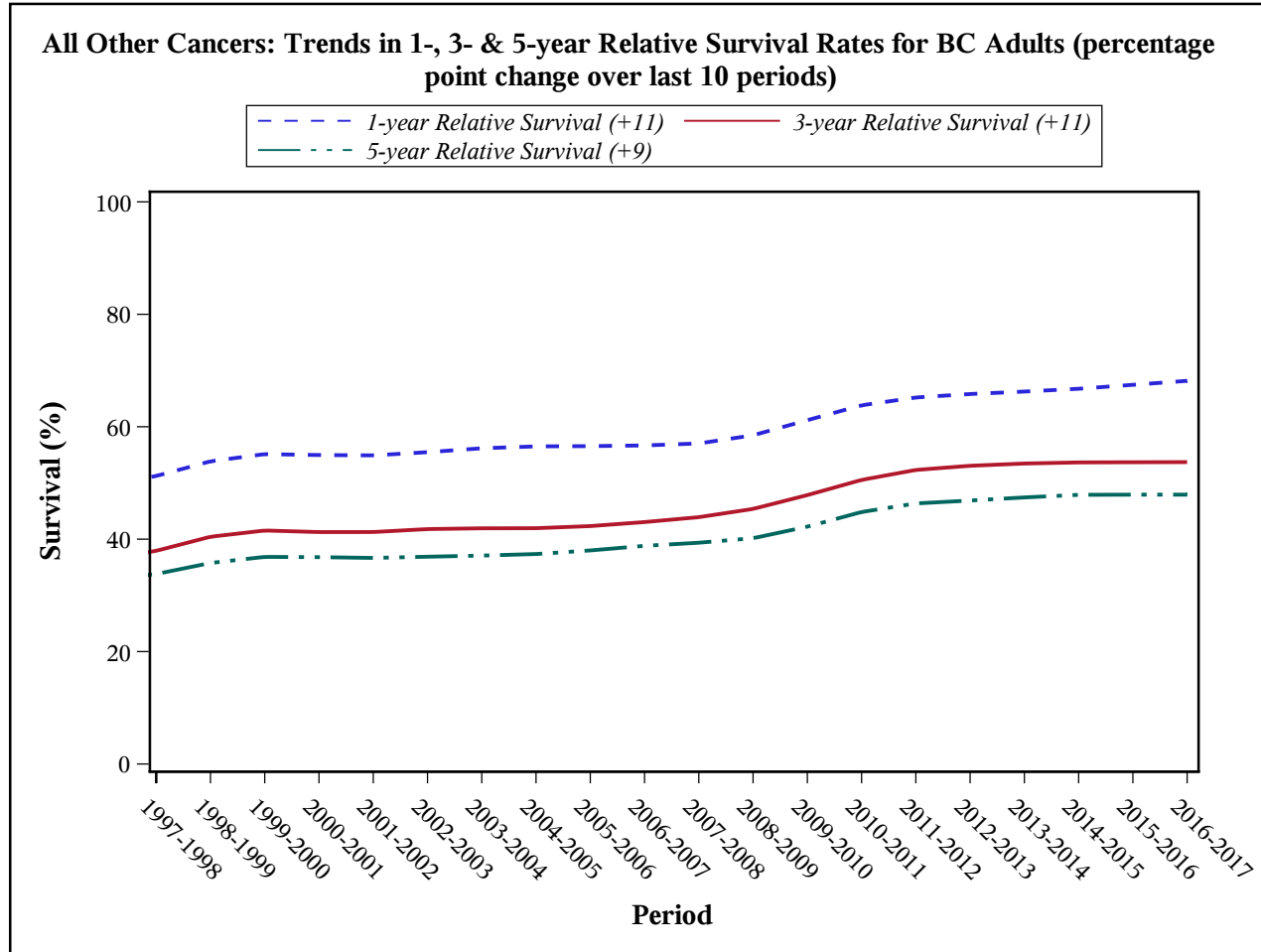
\* The end years of the periods in the plot.

Please refer to the [Introduction and Technical Notes](#) for further information.

Data Source: BC Cancer Registry Date Retrieved: 17DEC2019 Analysis by: Cancer Surveillance and Outcomes, Data & Analytics

**All Other Cancers**

**Cancer Relative Survival Rate Trend for BC Adults, 1998 - 2017\***



\* The end years of the periods in the plot.

Please refer to the [Introduction and Technical Notes](#) for further information.

Data Source: BC Cancer Registry Date Retrieved: 17DEC2019 Analysis by: Cancer Surveillance and Outcomes, Data & Analytics