

Primary Care Practitioners
(Family Practice)

Indigenous Cancer Care

Supportive Care

(Counselling, Psychiatry, Nutrition, Speech Language Pathology, Physiotherapy, Pain & Symptom Management/Palliative Care)

This figure represents a general pathway of care that most people with cancer will experience. It shows

- The major phases of a cancer journey
- How a person might progress through each phase
- Key supportive services that are available throughout each person's cancer journey

Please visit the [Clinical Pathways Web](#) page for

- Tumour Group Clinical Pathways
- Patient Companion Guide
- Methodology Reports

Target Population

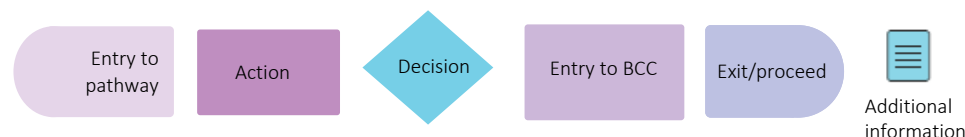
The target population for this pathway include health care providers such as primary care practitioners, oncologists, specialists, nurses, and other members of a health care team including allied health providers. Healthcare administrators across BC Cancer and the health authorities may also benefit from this resource for systems and operational planning.

Pathway Disclaimer

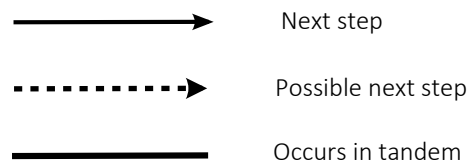
This pathway is an informational resource, intended to provide a high-level overview of the treatment journey a patient in British Columbia may receive. This pathway is not a substitute for medical advice and clinical judgment is still required as not all care trajectories will follow the proposed steps outlined in the pathway. This resource may not reflect all available evidence as research continues to evolve rapidly and BC Cancer is not responsible for any incomplete information. Furthermore, BC Cancer and those involved in developing this pathway are not liable for any incidental or consequential outcomes related to the information in this pathway. Anyone using the information provided in this pathway does so at their own risk.

Pathway Map Legend

Shape Guide



Line Guide



Pathway Map Considerations

This pathway is intended as a high-level resource and therefore does not include specific recommendations on specific systemic therapy protocols or radiation therapy doses. Instead, additional information can be sought via the inserted hyperlinks to resources that may aid a clinician in their treatment planning. The level of detail for each pathway was guided by the tumor group lead and intentionally kept high-level and represents the overall ideal pathway of care for a patient in general. Each patient will have individual needs and each cancer centre may have variation in the way care is delivered, but overall the intent was to represent the pathway that the majority of patients will follow.

General Resources

Indigenous Patient Navigator Referral Form(2): <http://www.phsa.ca/aboriginal-health-site/Documents/IPN%20Fillable%20Referral%20Form.pdf>

Supportive Care(21): <http://www.bccancer.bc.ca/our-services/services/supportive-care>

Compassionate Access Program(CAP)(3): <https://cap.phsa.ca/>

GI Chemotherapy Protocols(4): <http://www.bccancer.bc.ca/health-professionals/clinical-resources/chemotherapy-protocols/gastrointestinal#Liver>

Manufacturer Patient Assistance Programs(5): <http://www.bccancer.bc.ca/systemic-therapy-site/Documents/Policy%20and%20Forms/Patient%20assistance%20programs.pdf>

BC Cancer Research Clinical Trials(26): <https://www.bccrc.ca/dept/cid/clinical-trials>

Smoking Cessation Program(43): <http://www.bccancer.bc.ca/health-professionals/clinical-resources/smoking-cessation-program>

Alcohol Reduction(9): <http://www.bccancer.bc.ca/prevent/alcohol/reduce-your-risk>

MDC Referral Form(19): <http://www.bccancer.bc.ca/books/Documents/Clinical%20Care%20Pathways/Patient%20Conference%20Order.pdf>

Pharmacy Contact Info(6): <http://www.bccancer.bc.ca/health-professionals/clinical-resources/pharmacy#Contact--info>

Language & Translation Services(49): <http://www.phsa.ca/health-professionals/professional-resources/language-services/translation>

BC Cancer Library(50): <http://www.bccancer.bc.ca/our-services/services/library>

Health Connect Registry(51): <https://www.healthlinkbc.ca/find-care/health-connect-registry>

Abbreviations

ALP: Alkaline phosphatase

ALT: Alanine amino-transferase

AFP: Alpha-feto protein

AST: Aspartate amino-transferase

CBC: Complete Blood Count

EOL: End of Life

GGT: Gamma-Glutamyl Transpeptidase

HBV: Hepatitis B Virus

HCC: Hepatocellular carcinoma

HCV: Hepatitis C Virus

HPB: Hepato-Pancreato-Biliary

INR/PTT: International Normalized Ratio/Partial Thromboplastin Time

IR: Interventional Radiology

LI-RADS/TRA: Liver Imaging Reporting and Data System Resource/Treatment Response Assessment

VGH LTR: Vancouver General Hospital Liver Tumour Rounds

MDC: Multidisciplinary Conference/Discussion

MRCP: Magnetic Resonance Cholangiopancreatography

MRP: Most Responsible Provider

PCP: Primary Care Provider

PFC: Patient & Family Counseling

PSMPC: Pain & Symptom Management & Palliative Care

RT: Radiation Therapy

SBRT: Stereotactic Body Radiation Therapy

ST: Systemic Therapy

Additional Information

To learn more about how the Clinical Care Pathways are developed, visit the [Methodology Report](#).

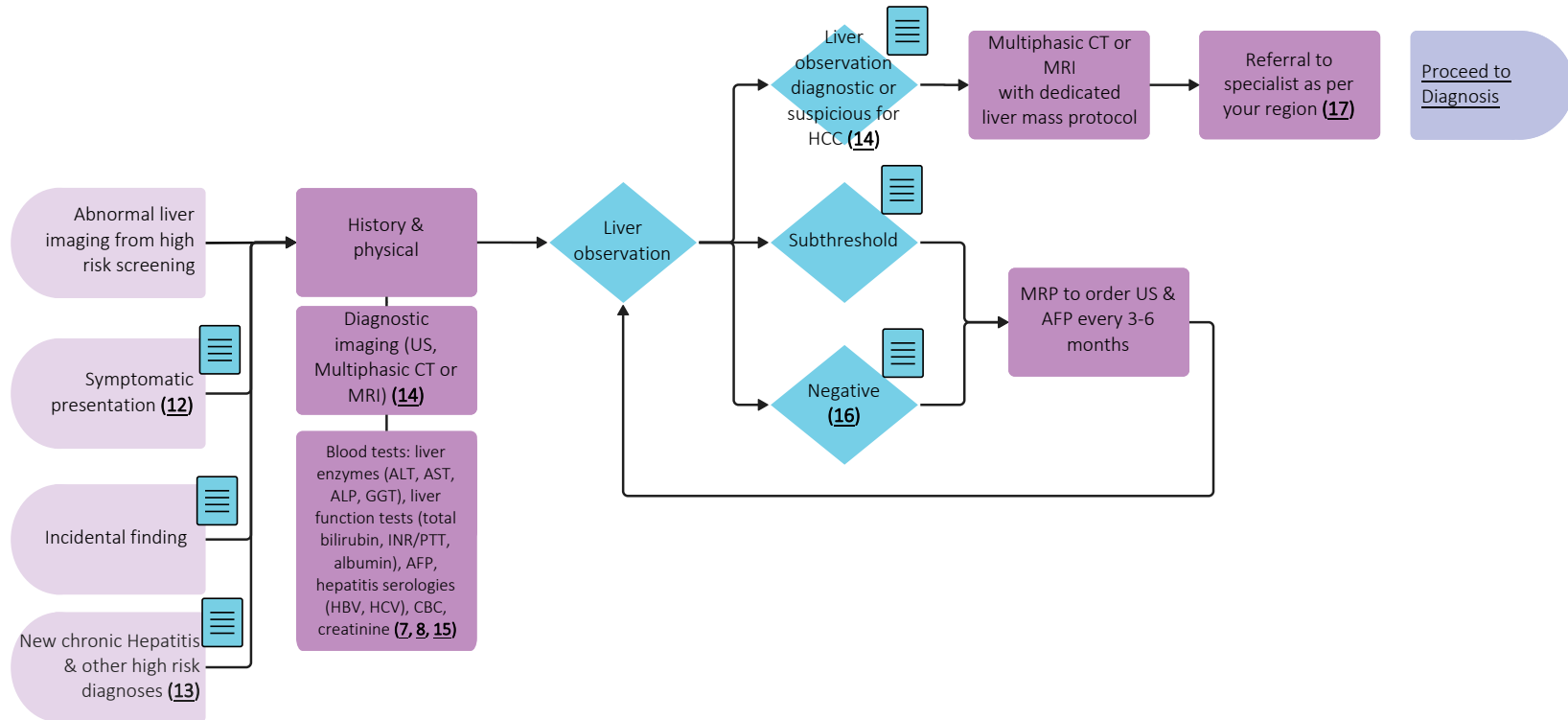
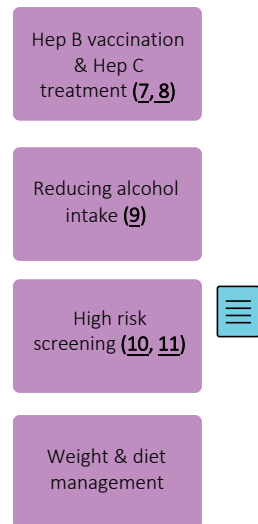
Other Tumour Group Clinical Care Pathways can be found on the [BC Cancer Website](#).

This work was supported by grant funding provided by the Health System Redesign Program.

Pre-Diagnosis

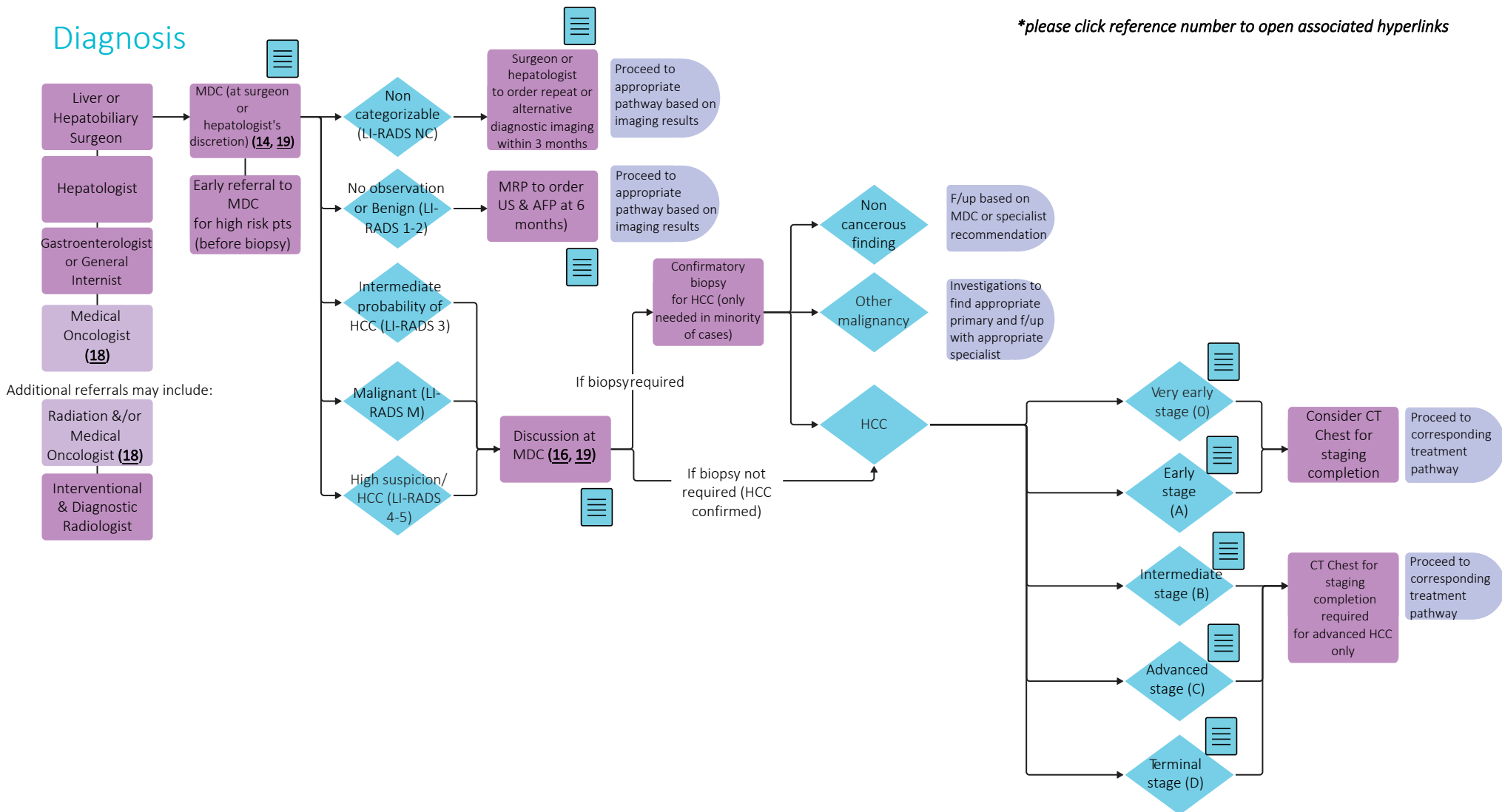
**please click reference number to open associated hyperlinks*

Prevention practices:



Diagnosis

**please click reference number to open associated hyperlinks*

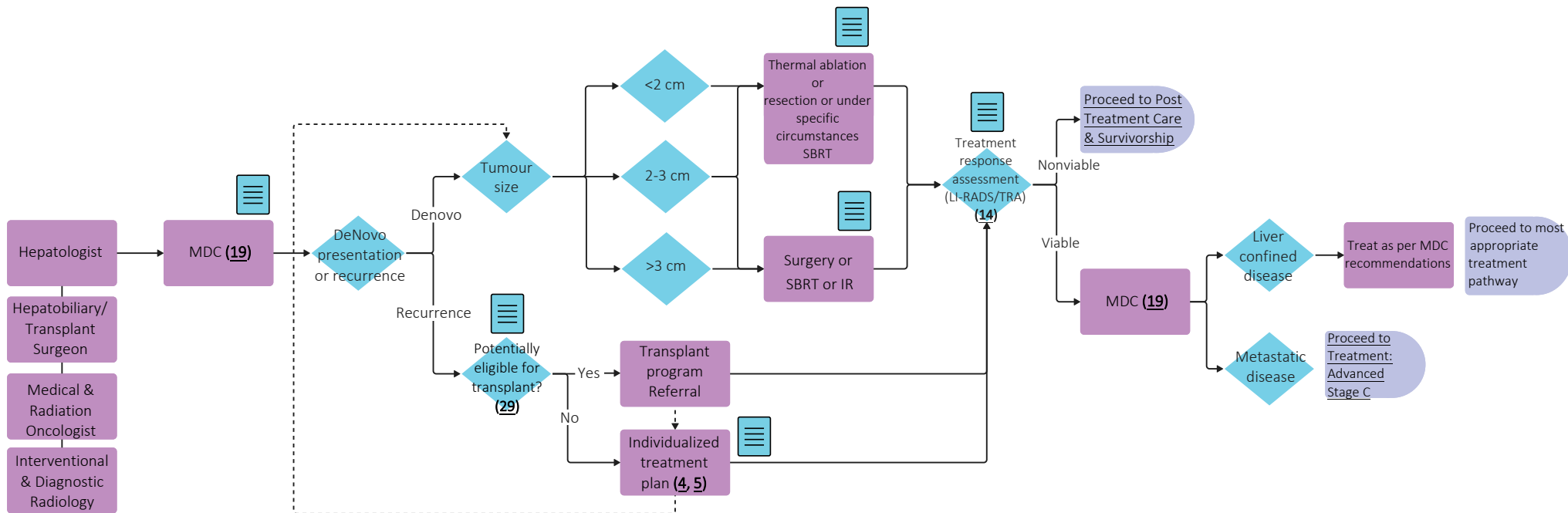


Throughout treatment, consider...

Regular symptom & performance status assessment (20); Supportive care (21, 22); Sexual & reproductive health (23, 24, 25); Co-morbidity management & medication review; Risk factor mitigation; Clinical trials (where applicable) (26); Goals of care & shared decision making (27); Cultural safety (2); Involvement of PCP, Genetics referral (where applicable) (28)

Treatment: Very Early/Early Stage (0-A) for single lesion

**please click reference number to open associated hyperlinks*

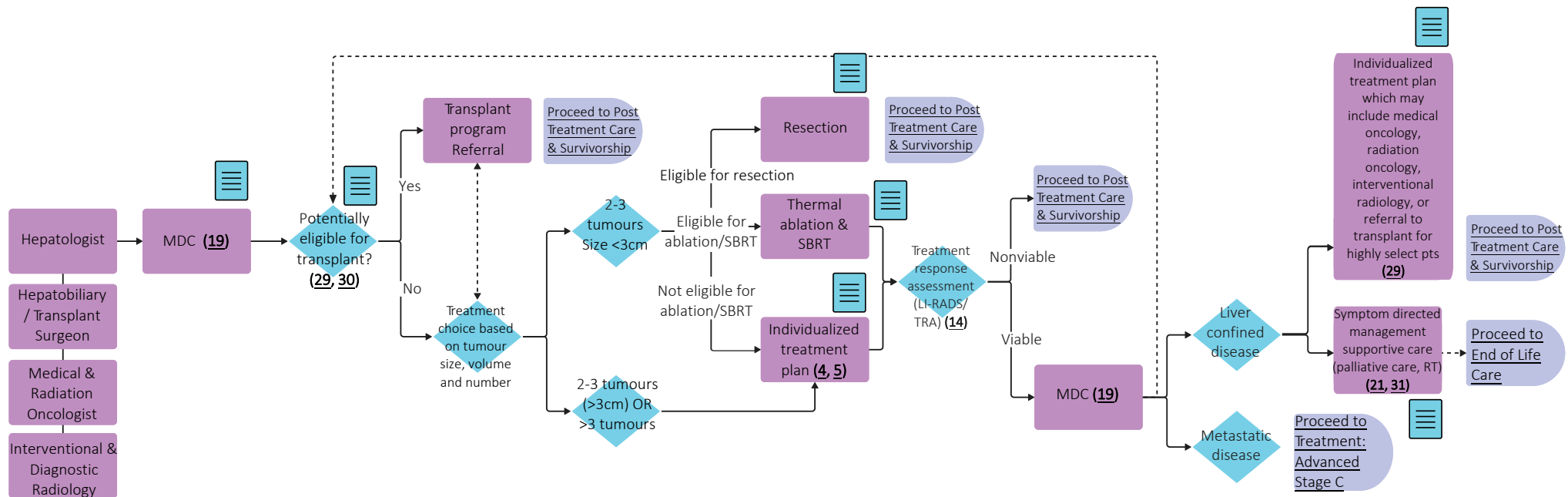


Throughout treatment, consider...

Regular symptom & performance status assessment (20); Supportive care (21, 22); Sexual & reproductive health (23, 24, 25); Co-morbidity management & medication review; Risk factor mitigation; Clinical trials (where applicable) (26); Goals of care & shared decision making (27); Cultural safety (2); Involvement of PCP, Genetics referral (where applicable) (28)

Treatment: Early stage (A), multiple lesions

**please click reference number to open associated hyperlinks*

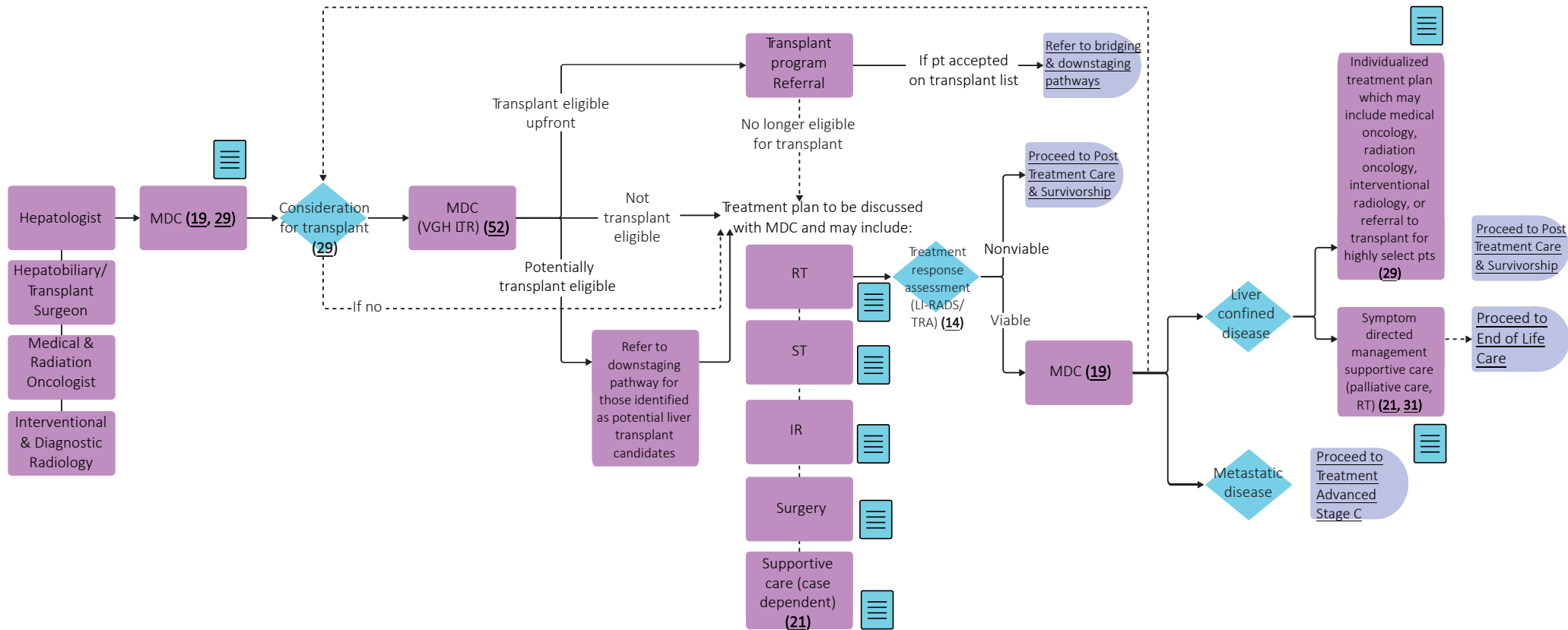


Throughout treatment, consider...

Regular symptom & performance status assessment (20); Supportive care (21, 22); Sexual & reproductive health (23, 24, 25); Co-morbidity management & medication review; Risk factor mitigation; Clinical trials (where applicable) (26); Goals of care & shared decision making (27); Cultural safety (2); Involvement of PCP, Genetics referral (where applicable) (28)

Treatment: Intermediate stage (B)

**please click reference number to open associated hyperlinks*

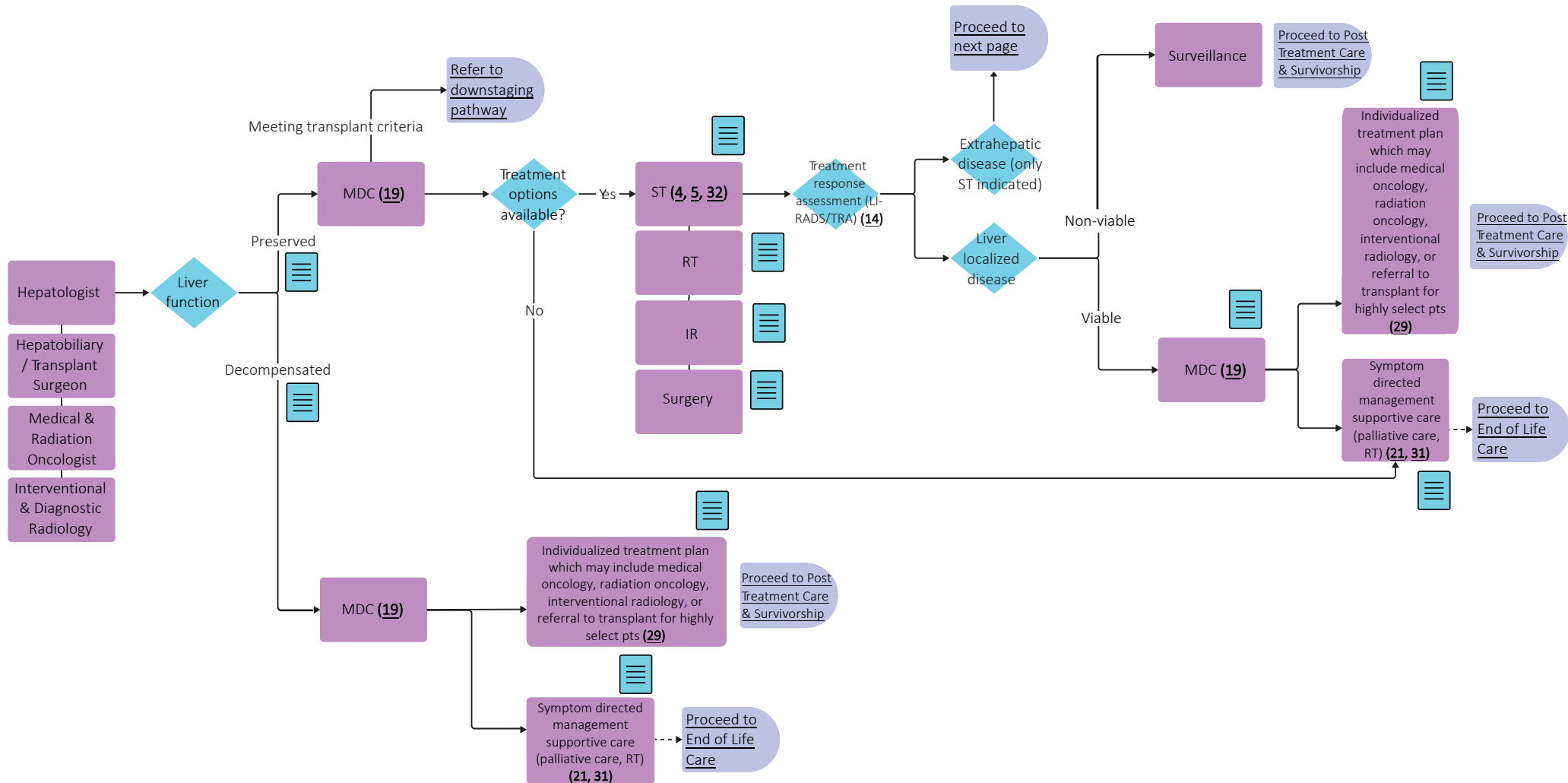


Throughout treatment, consider...

Regular symptom & performance status assessment (20); Supportive care (21, 22); Sexual & reproductive health (23, 24, 25); Co-morbidity management & medication review; Risk factor mitigation; Clinical trials (where applicable) (26); Goals of care & shared decision making (27); Cultural safety (2); Involvement of PCP, Genetics referral (where applicable) (28)

Treatment: Advanced stage (C) Pg. 1

**please click reference number to open associated hyperlinks*

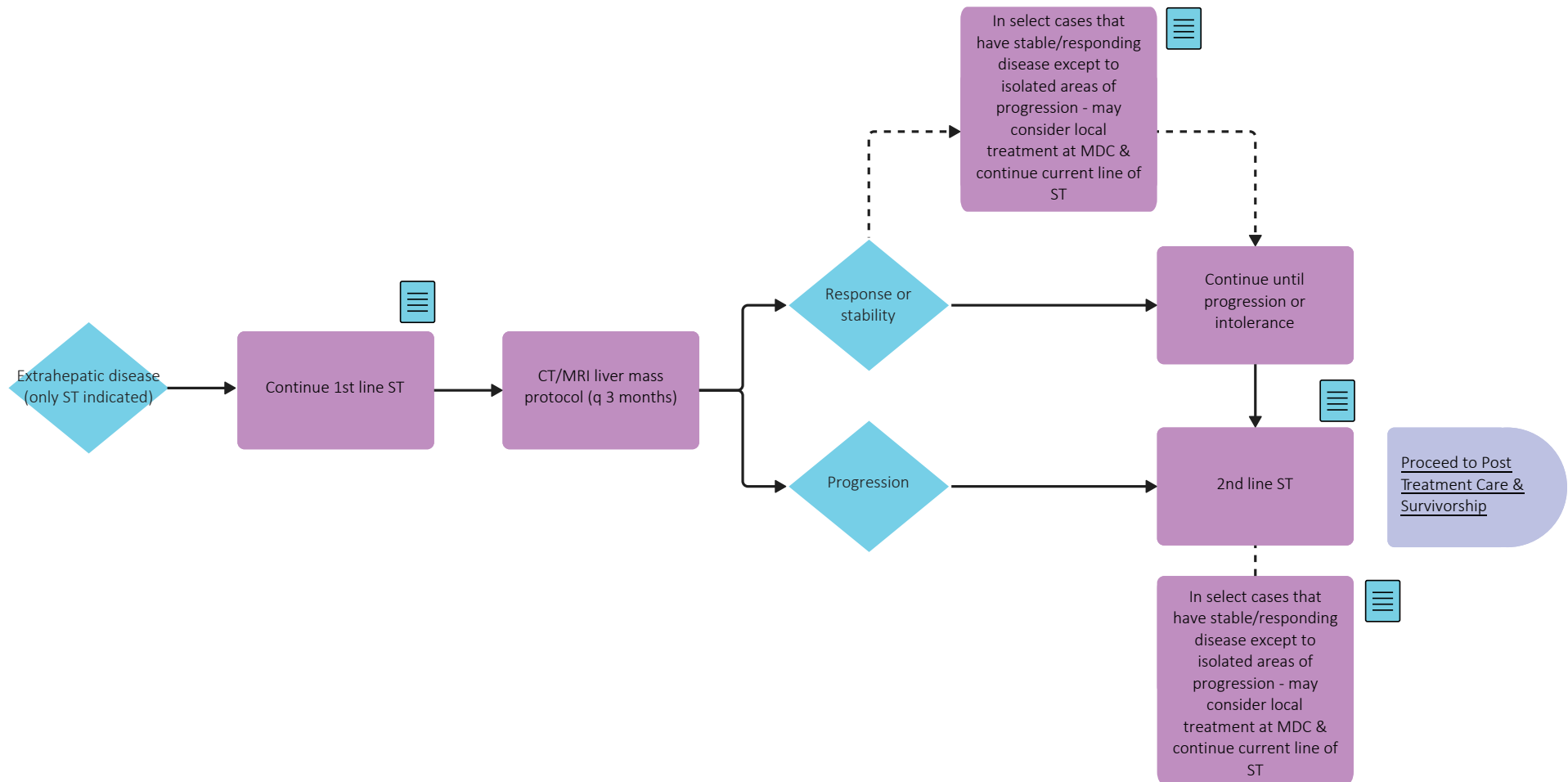


Throughout treatment, consider...

Regular symptom & performance status assessment (20); Supportive care (21, 22); Sexual & reproductive health (23, 24, 25); Co-morbidity management & medication review; Risk factor mitigation; Clinical trials (where applicable) (26); Goals of care & shared decision making (27); Cultural safety (2); Involvement of PCP, Genetics referral (where applicable) (28)

Treatment: Advanced stage (C) Pg. 2

**please click reference number to open associated hyperlinks*

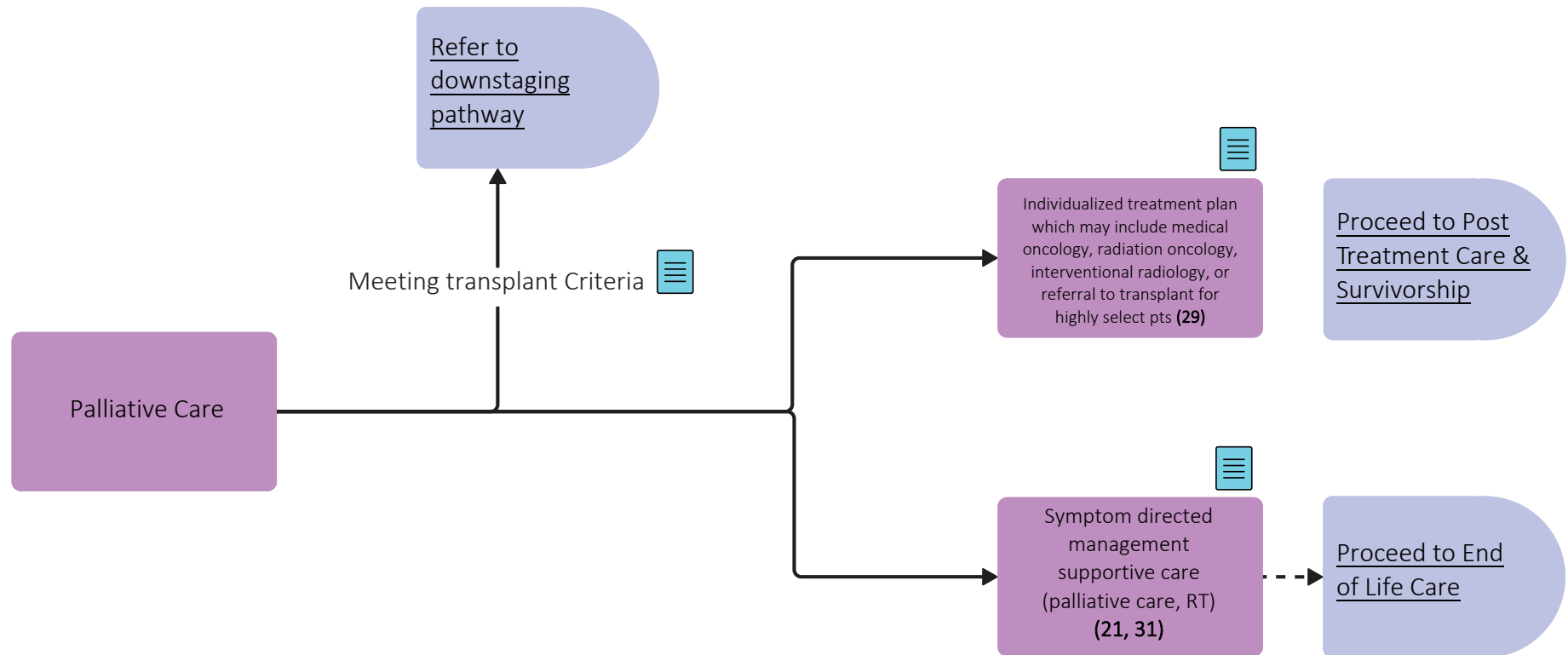


Throughout treatment, consider...

Regular symptom & performance status assessment [\(20\)](#); Supportive care [\(21, 22\)](#); Sexual & reproductive health [\(23, 24, 25\)](#); Co-morbidity management & medication review; Risk factor mitigation; Clinical trials (where applicable) [\(26\)](#); Goals of care & shared decision making [\(27\)](#); Cultural safety [\(2\)](#); Involvement of PCP, Genetics referral (where applicable) [\(28\)](#)

Treatment: Terminal stage (D)

**please click reference number to open associated hyperlinks*

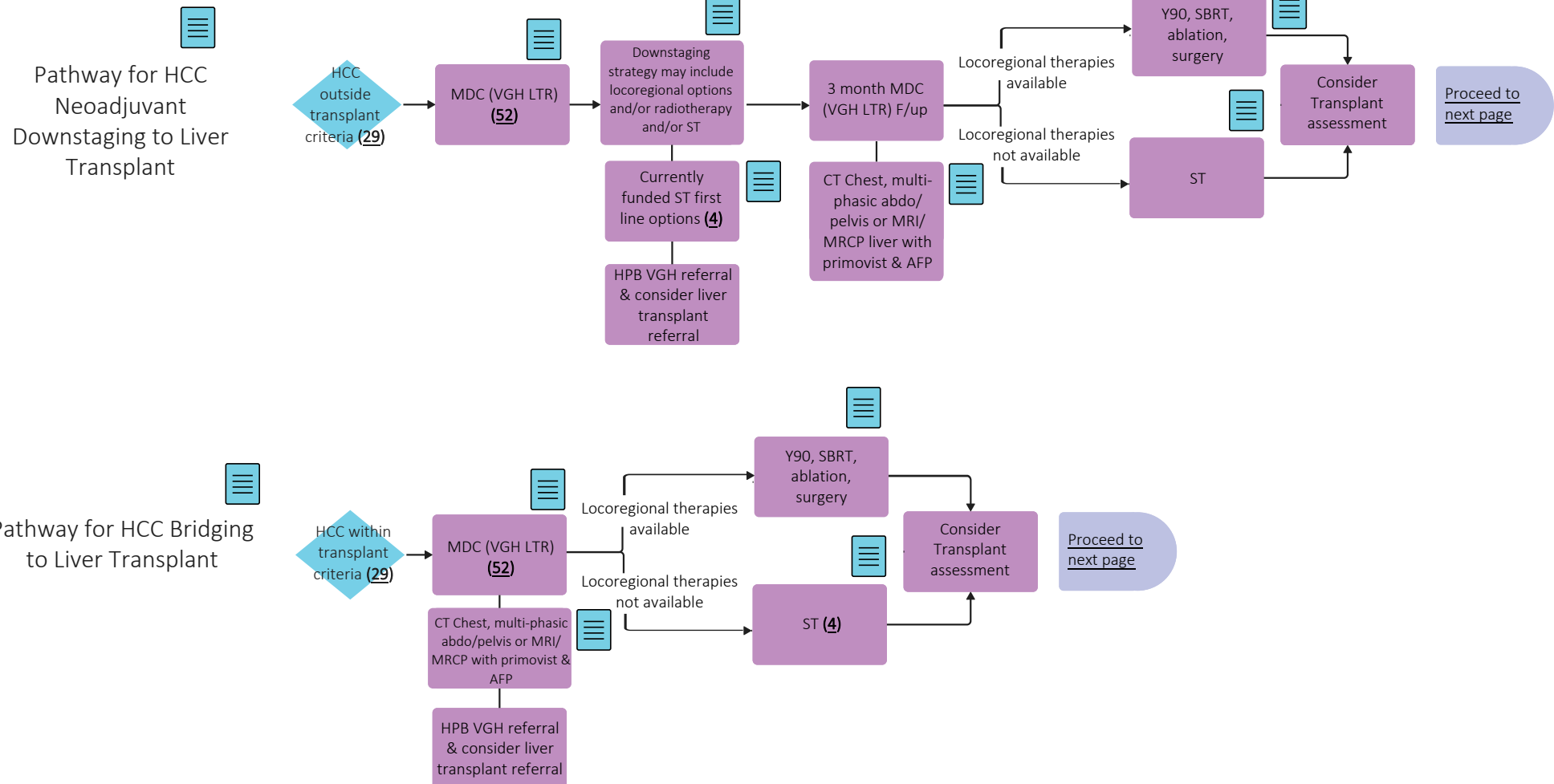


Throughout treatment, consider...

Regular symptom & performance status assessment (20); Supportive care (21, 22); Sexual & reproductive health (23, 24, 25); Co-morbidity management & medication review; Risk factor mitigation; Clinical trials (where applicable) (26); Goals of care & shared decision making (27); Cultural safety (2); Involvement of PCP, Genetics referral (where applicable) (28)

Downstaging & Bridging to Liver Transplant Pathways Pg. 1

**please click reference number to open associated hyperlinks*



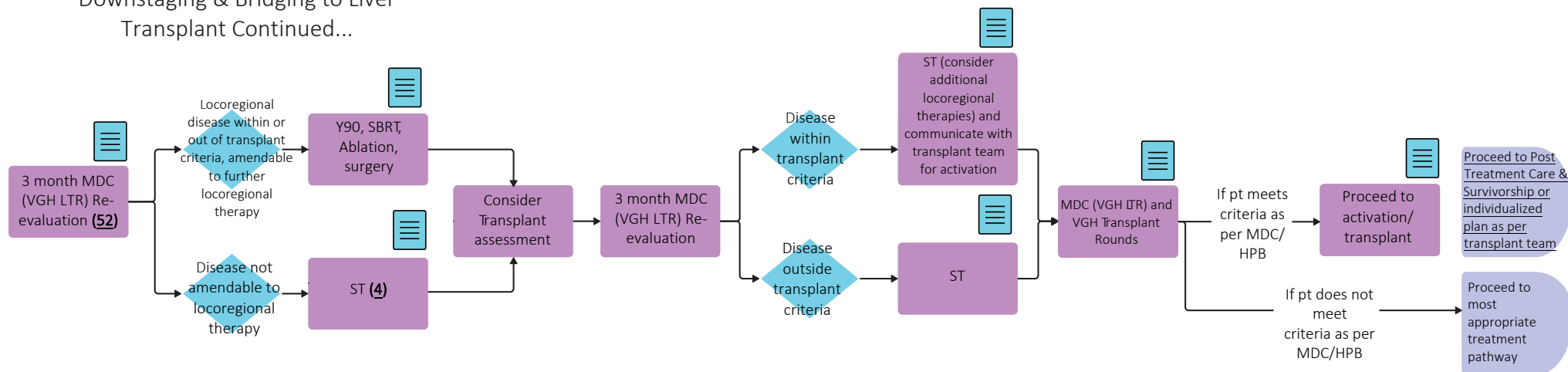
Throughout treatment, consider...

Regular symptom & performance status assessment (20); Supportive care (21, 22); Sexual & reproductive health (23, 24, 25); Co-morbidity management & medication review; Risk factor mitigation; Clinical trials (where applicable) (26); Goals of care & shared decision making (27); Cultural safety (2); Involvement of PCP, Genetics referral (where applicable) (28)

Downstaging & Bridging to Liver Transplant Pathways Pg. 2

**please click reference number to open associated hyperlinks*

Pathway for HCC Neoadjuvant Downstaging & Bridging to Liver Transplant Continued...



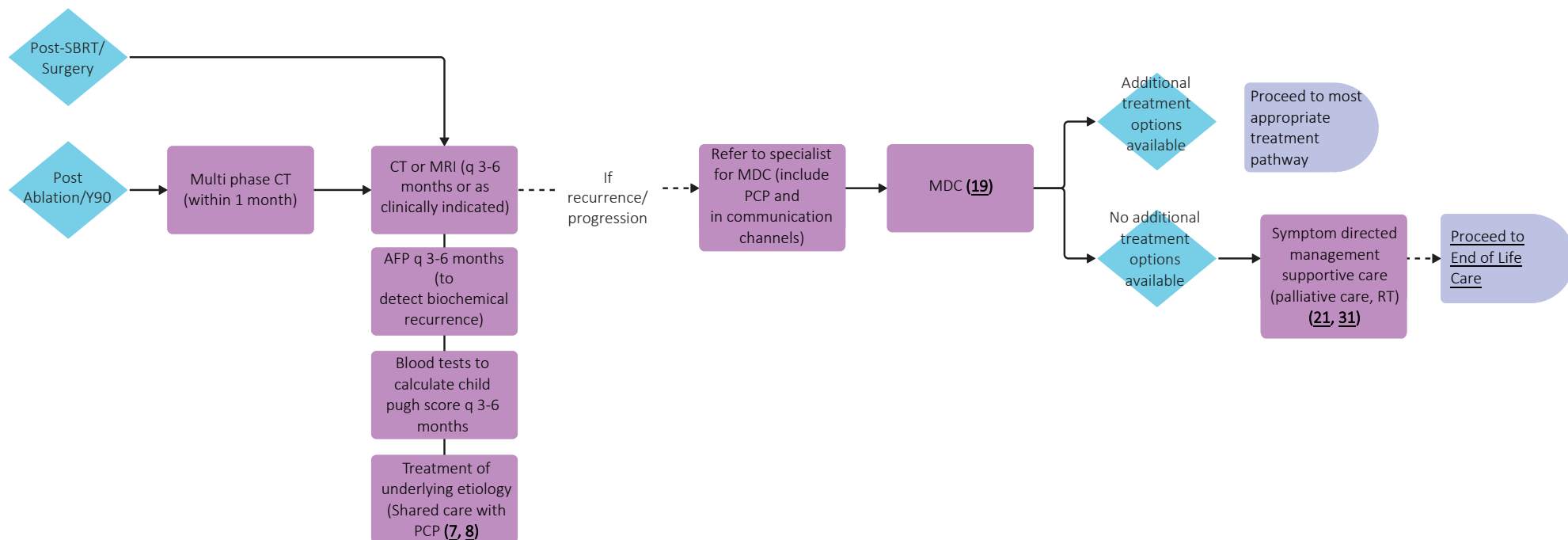
Throughout treatment, consider...

Regular symptom & performance status assessment (20); Supportive care (21, 22); Sexual & reproductive health (23, 24, 25); Co-morbidity management & medication review; Risk factor mitigation; Clinical trials (where applicable) (26); Goals of care & shared decision making (27); Cultural safety (2); Involvement of PCP, Genetics referral (where applicable) (28)

Post Treatment Care & Survivorship & Recurrent or Progressive Disease

**please click reference number to open associated hyperlinks*

F/up conducted by oncology team and may include shared care with PCP

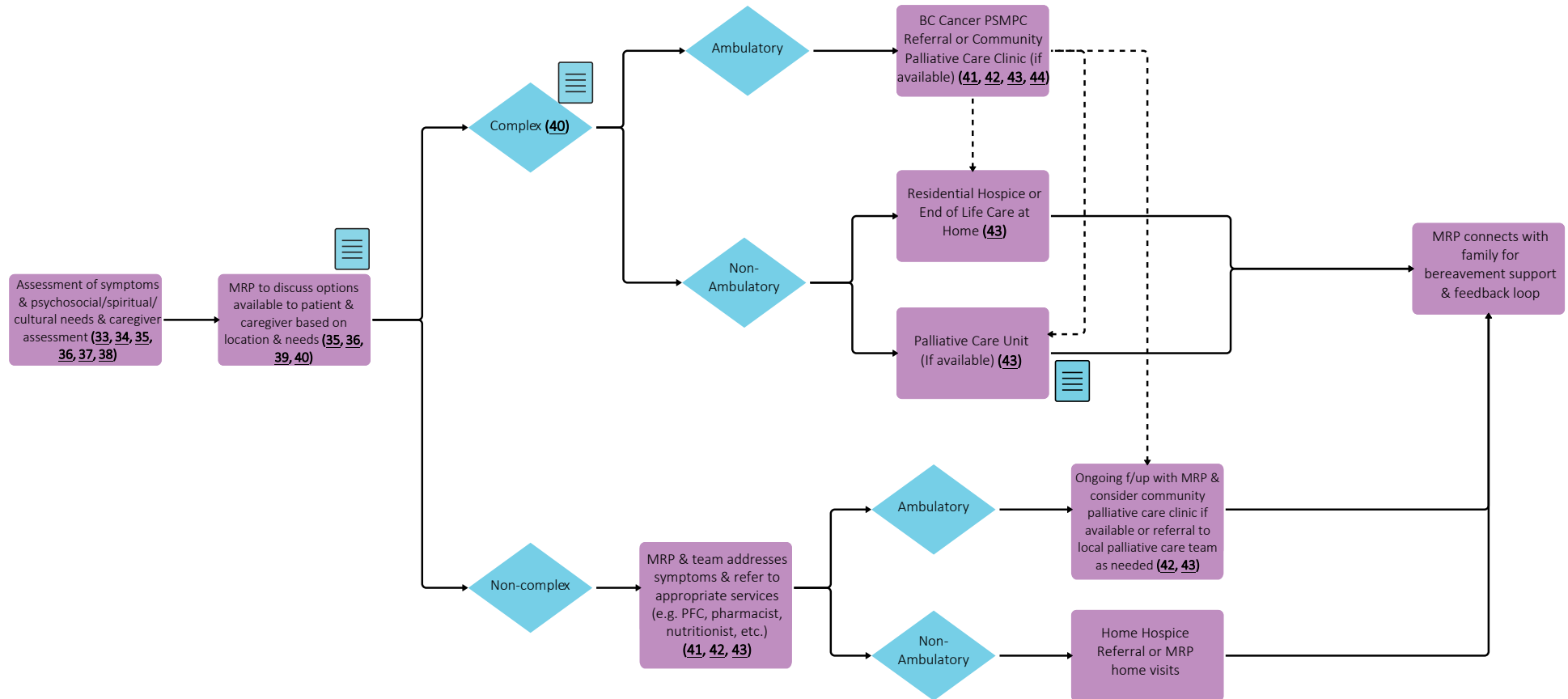


Throughout treatment, consider...

Regular symptom & performance status assessment (20); Supportive care (21, 22); Sexual & reproductive health (23, 24, 25); Co-morbidity management & medication review; Risk factor mitigation; Clinical trials (where applicable) (26); Goals of care & shared decision making (27); Cultural safety (2); Involvement of PCP, Genetics referral (where applicable) (28)

End of Life Care

**please click reference number to open associated hyperlinks*



Throughout treatment, consider...

Goals of Care Discussions & Consideration of Cultural Safety (2, 27, 39, 40, 45, 46, 47, 48)

Subject Matter Expert Working Group & COIs

Janine Davies, Project Lead, Medical Oncologist
Taiho, Astra Zeneca, Eisai, Taiho, Amgen, Merck

Emma Dunne, Project Lead, Radiation Oncologist
No disclosures

Maja Segedi, Project Lead, Surgical Oncologist
EISAI, CMHCC

Katrina Duncan, Surgical Oncologist
No disclosures

Irene Yu, Medical Oncologist
Eisai, Astra Zeneca

Roy Ma, Radiation Oncologist
No disclosures

Alison Harris, Radiologist
No disclosures

David Liu, Interventional Radiologist/Oncologist
Sirtex, Astra Zeneca, Esai, ABK Biomedical

Gage Watson, Interventional Radiologist
No disclosures

Daniel Owen, Pathologist
No disclosures

Rohit Pai, Gastroenterologist/Internal Medicine
No disclosures

Cathy Clelland, Family Practice
No disclosures

Howard Lim, Medical Oncologist
AZ, BMS, Astellas, Roche, Incyte, Merck, Daiichi,
Taiho, Eisai, CDA, Varian

Michael Bleszynski, Surgeon
No disclosures

Pathway Program Team

Yashpal Bhatia, Project Coordinator, Tumour Groups
Tammy Currie, Executive Director, Provincial Programs
Amilya Ladak, Manager, Tumour Groups
James Loudon, Director, Provincial Programs
Kalina Nowaczek, Policy Analyst, Tumour Groups
Christine Simmons, Tumour Group Council Chair
Elaine Wai, Senior Executive Director, Medical Affairs and Quality

Other Stakeholders

Family Practice & GPO
Indigenous Cancer Control
Nursing Community of Practice (NCoP)
Patient and Family Experience Team & Supportive Care
Radiation Therapists
Surgical Oncology Network
Provincial Pharmacy, Pathology & Medical Imaging Teams

Appendix

- 1 <http://www.bccancer.bc.ca/health-professionals/professional-resources/clinical-care-pathways>
- 2 <http://www.phsa.ca/aboriginal-health-site/Documents/IPN%20Fillable%20Referral%20Form.pdf>
- 3 <https://cap.phsa.ca/>
- 4 <http://www.bccancer.bc.ca/health-professionals/clinical-resources/chemotherapy-protocols/gastrointestinal#Liver>
- 5 <http://www.bccancer.bc.ca/systemic-therapy-site/Documents/Policy%20and%20Forms/Patient%20assistance%20programs.pdf>
- 6 <http://www.bccancer.bc.ca/health-professionals/clinical-resources/pharmacy#Contact--info>
- 7 <https://www2.gov.bc.ca/gov/content/health/practitioner-professional-resources/bc-guidelines/hepatitis>
- 8 <https://www2.gov.bc.ca/gov/content/health/practitioner-professional-resources/bc-guidelines/abnormal-liver-chemistry>
- 9 <http://www.bccancer.bc.ca/prevent/alcohol/reduce-your-risk>
- 10 <https://www.aasld.org/practice-guidelines>
- 11 <https://www.psbchealthhub.ca/clinical-guidance/551>
- 12 <http://www.bccancer.bc.ca/health-info/types-of-cancer/digestive-system/liver#Diagnosis--&--staging>
- 13 <https://pmc.ncbi.nlm.nih.gov/articles/PMC10663390/#T1>
- 14 <https://www.acr.org/Clinical-Resources/Clinical-Tools-and-Reference/Reporting-and-Data-Systems/LI-RADS>
- 15 <http://www.bccdc.ca/resource-gallery/Documents/Guidelines%20and%20Forms/Guidelines%20and%20Manuals/Epid/CD%20Manual/Chapter%201%20-%20CDC/HBV%20Quick%20Reference%20Guide.pdf>
- 16 https://www.nccn.org/professionals/physician_gls/pdf/hcc.pdf
- 17 <https://www.raceconnect.ca/>
- 18 <http://www.bccancer.bc.ca/health-professionals-site/Documents/Patient-Referral-Form.pdf>
- 19 <http://www.bccancer.bc.ca/books/Documents/Clinical%20Care%20Pathways/Patient%20Conference%20Order.pdf>
- 20 <https://www.uptodate.com/contents/image?imageKey=HEME%2F72901>
- 21 <http://www.bccancer.bc.ca/our-services/services/supportive-care>
- 22 <http://www.bccancer.bc.ca/our-services/services/support-programs>
- 23 <https://www.olivefertility.com/referring-physicians>
- 24 <https://www.pacificfertility.ca/physician-resources>
- 25 <http://www.bccancer.bc.ca/health-info/coping-with-cancer/managing-symptoms-side-effects/sexual-health>
- 26 <https://www.bccrc.ca/dept/cid/clinical-trials>
- 27 <http://www.bccancer.bc.ca/new-patients-site/Documents/ACP-goals-of-care-orders.pdf>
- 28 <http://www.bccancer.bc.ca/health-professionals/clinical-resources/hereditary-cancer>
- 29 <http://www.transplant.bc.ca/health-professionals/transplant-resources/transplant-clinical-guidelines/guidelines-for-transplant>
- 30 <https://cirrhosiscare.ca/tools-provider/calculators-ttv/>
- 31 <http://www.bccancer.bc.ca/health-professionals/clinical-resources/pain-symptom-management-palliative-care>
- 32 [https://www.journal-of-hepatology.eu/article/S0168-8278\(25\)02571-1/fulltext](https://www.journal-of-hepatology.eu/article/S0168-8278(25)02571-1/fulltext)
- 33 <http://www.bccancer.bc.ca/our-services/centres-clinics/bc-cancer-vancouver/epicc>
- 34 https://www2.gov.bc.ca/assets/gov/health/practitioner-pro/bc-guidelines/palliative1_appendix_a.pdf

Appendix

- 35 <https://www.bc-cpc.ca/publications/symptom-management-guidelines/>
- 36 <https://www2.gov.bc.ca/gov/content/health/practitioner-professional-resources/bc-guidelines/palliative-care>
- 37 <https://www2.gov.bc.ca/gov/content/health/practitioner-professional-resources/pharmacare/plans/plan-p-bc-palliative-care-benefits-program>
- 38 <http://www.bccancer.bc.ca/our-services/services/indigenous-cancer-control>
- 39 <http://www.bccancer.bc.ca/new-patients-site/Documents/SeriousIllnessConversationGuideCard.pdf>
- 40 <http://www.phsa.ca/health-info/medical-assistance-in-dying>
- 41 <http://www.bccancer.bc.ca/managing-symptoms-site/Documents/PSMPC-Referral-Form-for-All-BC-Cancer-Centres.pdf>
- 42 <http://www.bccancer.bc.ca/our-services/services/supportive-care/pain-symptom-management#What--we--do>
- 43 https://vancouver.pathwaysbc.ca/service_categories/24
- 44 http://www.bccancer.bc.ca/new-patients-site/Documents/MIPPC_Referral_Form.pdf
- 45 <https://www2.gov.bc.ca/assets/gov/people/seniors/health-safety/pdf/myvoice-advancecareplanningguide.pdf>
- 46 <https://www2.gov.bc.ca/gov/content/family-social-supports/seniors/health-safety/advance-care-planning>
- 47 <http://www.bccancer.bc.ca/managing-symptoms-site/Documents/When-Life-Nearing-its-End.pdf>
- 48 <http://www.bccancer.bc.ca/new-patients-site/Documents/ACP-tips-for-oncology-professionals.pdf>
- 49 <http://www.phsa.ca/health-professionals/professional-resources/language-services/translation>
- 50 <http://www.bccancer.bc.ca/our-services/services/library>
- 51 <https://www.healthlinkbc.ca/find-care/health-connect-registry>
- 52 <https://www.bccancer.bc.ca/books/Documents/Gastrointestinal/VCH-LiverTumourRounds-ReferralForm.pdf>