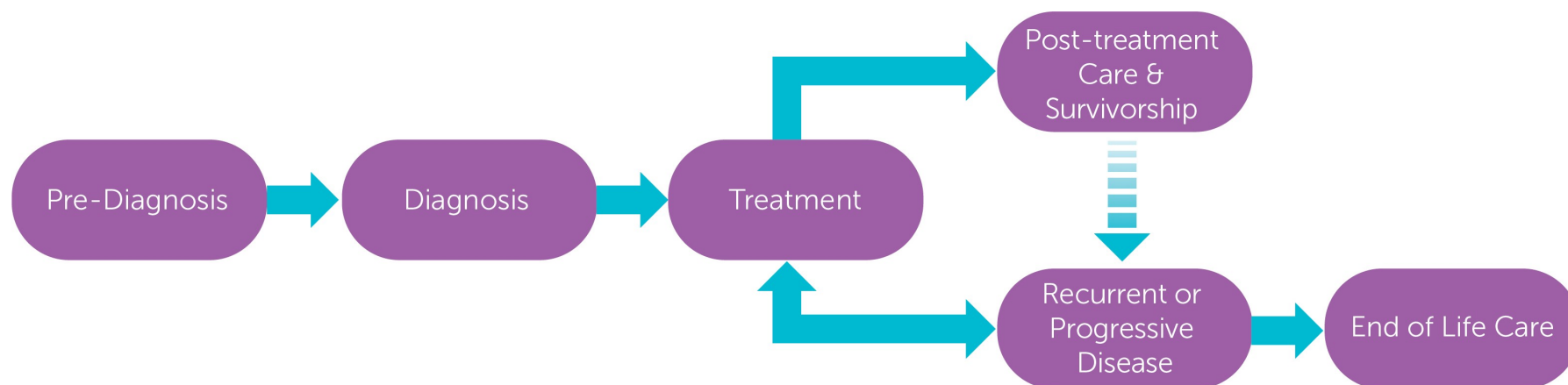


# Head & Neck Tumour Group - Well Differentiated Thyroid Pathway

## Overarching Pathway



**Primary Care Practitioners**  
(Family Practice)

**Indigenous Cancer Care**

**Supportive Care**

(Counselling, Psychiatry, Nutrition, Speech Language Pathology, Physiotherapy, Pain & Symptom Management/Palliative Care)

This figure represents a general pathway of care that most people with cancer will experience. It shows

- The major phases of a cancer journey
- How a person might progress through each phase
- Key supportive services that are available throughout each person's cancer journey

Please visit the [Clinical Pathways Web](#) page for

- Tumour Group Clinical Pathways
- Patient Companion Guide
- Methodology Reports

# Head & Neck Tumour Group - Well Differentiated Thyroid Pathway

Created October 2024

## Target Population

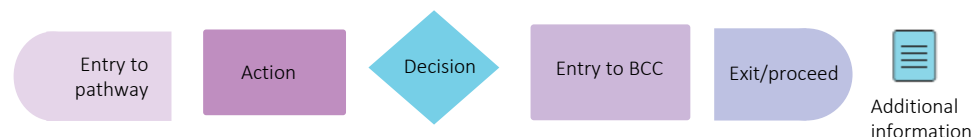
The target population for this pathway include health care providers such as primary care practitioners, oncologists, specialists, nurses, and other members of a health care team including allied health providers. Healthcare administrators across BC Cancer and the health authorities may also benefit from this resource for systems and operational planning.

## Pathway Disclaimer

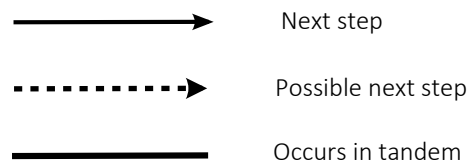
This pathway is an informational resource, intended to provide a high-level overview of the treatment journey a patient in British Columbia may receive. This pathway is not a substitute for medical advice and clinical judgment is still required as not all care trajectories will follow the proposed steps outlined in the pathway. This resource may not reflect all available evidence as research continues to evolve rapidly and BC Cancer is not responsible for any incomplete information. Furthermore, BC Cancer and those involved in developing this pathway are not liable for any incidental or consequential outcomes related to the information in this pathway. Anyone using the information provided in this pathway does so at their own risk.

## Pathway Map Legend

### Shape Guide



### Line Guide



## Pathway Map Considerations

This pathway is intended as a high-level resource and therefore does not include specific recommendations on specific systemic therapy protocols or radiation therapy doses. Instead, additional information can be sought via the inserted hyperlinks to resources that may aid a clinician in their treatment planning. The level of detail for each pathway was guided by the tumor group lead and intentionally kept high-level and represents the overall ideal pathway of care for a patient in general. Each patient will have individual needs and each cancer centre may have variation in the way care is delivered, but overall the intent was to represent the pathway that the majority of patients will follow.

# Head & Neck Tumour Group - Well Differentiated Thyroid Pathway

---

## General Resources

**Indigenous Patient Navigator Form** (1): <http://www.phsa.ca/aboriginal-health-site/Documents/IPN%20Fillable%20Referral%20Form.pdf>

**Supportive Care** (2): <http://www.bccancer.bc.ca/our-services/services/supportive-care>

**Compassionate Access Program (CAP)**(3): <https://cap.phsa.ca/>

**Head & Neck Chemotherapy Protocols** (4): <http://www.bccancer.bc.ca/health-professionals/clinical-resources/chemotherapy-protocols/head-neck#Protocols>

**Manufacturer Patient Assistance Programs** (5): <http://www.bccancer.bc.ca/systemic-therapy-site/Documents/Policy%20and%20Forms/Patient%20assistance%20programs.pdf>

**BC Cancer Research Clinical Trials** (6): <https://www.bccrc.ca/dept/cid/clinical-trials>

**Smoking Cessation Program** (7): <http://www.bccancer.bc.ca/health-professionals/clinical-resources/smoking-cessation-program>

**Alcohol Reduction** (8): <http://www.bccancer.bc.ca/prevent/alcohol/reduce-your-risk>

**MDC Referral Form** (9): <http://www.bccancer.bc.ca/books/Documents/Clinical%20Care%20Pathways/Patient%20Conference%20Order.pdf>

**Pharmacy Contact Info** (10): <http://www.bccancer.bc.ca/health-professionals/clinical-resources/pharmacy#Contact--info>

**Language & Translation Services** (51): <http://www.phsa.ca/health-professionals/professional-resources/language-services/translation>

**BC Cancer Library** (52): <http://www.bccancer.bc.ca/our-services/services/library>

---

## Abbreviations

**ACR-TIRADS:** American College of Radiology - Thyroid Imaging Reporting & Data System

**FNA:** Fine Needle Aspiration

**LEAF:** Late Effects, Assessment and Follow-Up

**MDC:** Multidisciplinary Conference/Discussion

**MRP:** Most Responsible Provider

**PCP:** Primary Care Provider

**PFC:** Patient & Family Counseling

**PSMPC:** Pain & Symptom Management & Palliative Care

**RAI:** Radioactive Iodine

**RT:** Radiation Therapy

**ST:** Systemic Therapy

**TSH:** Thyroid Stimulating Hormone

## Additional Information

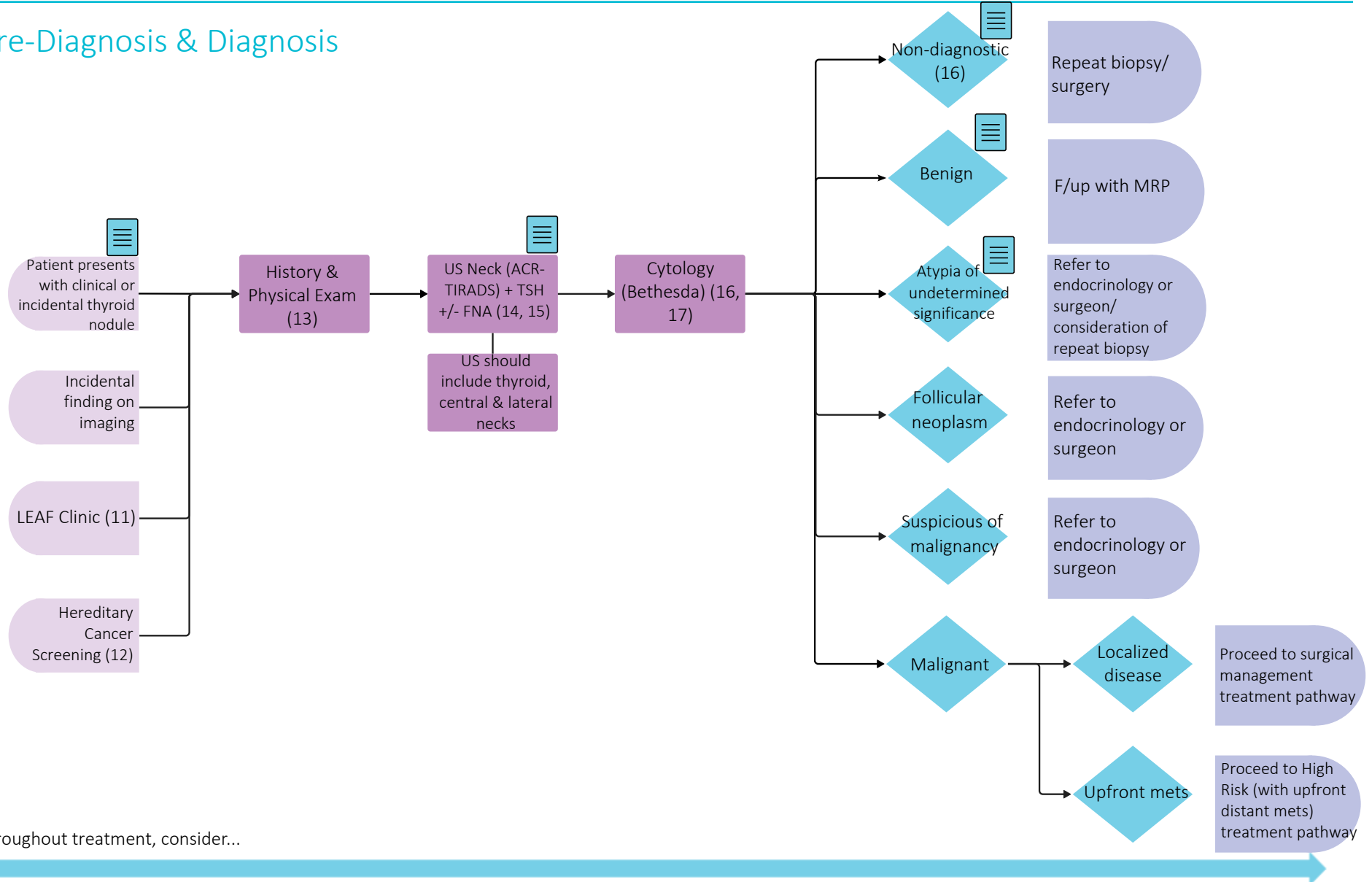
To learn more about how the Clinical Care Pathways are developed, visit the [Methodology Report](#).

Other Tumour Group Clinical Care Pathways can be found on the [BC Cancer Website](#).

This work was made possible by the funding support provided by an arms length educational grant from Bayer. There was no industry involvement in the content of this pathway.

# Head & Neck Tumour Group - Well Differentiated Thyroid Pathway

## Pre-Diagnosis & Diagnosis



Throughout treatment, consider...

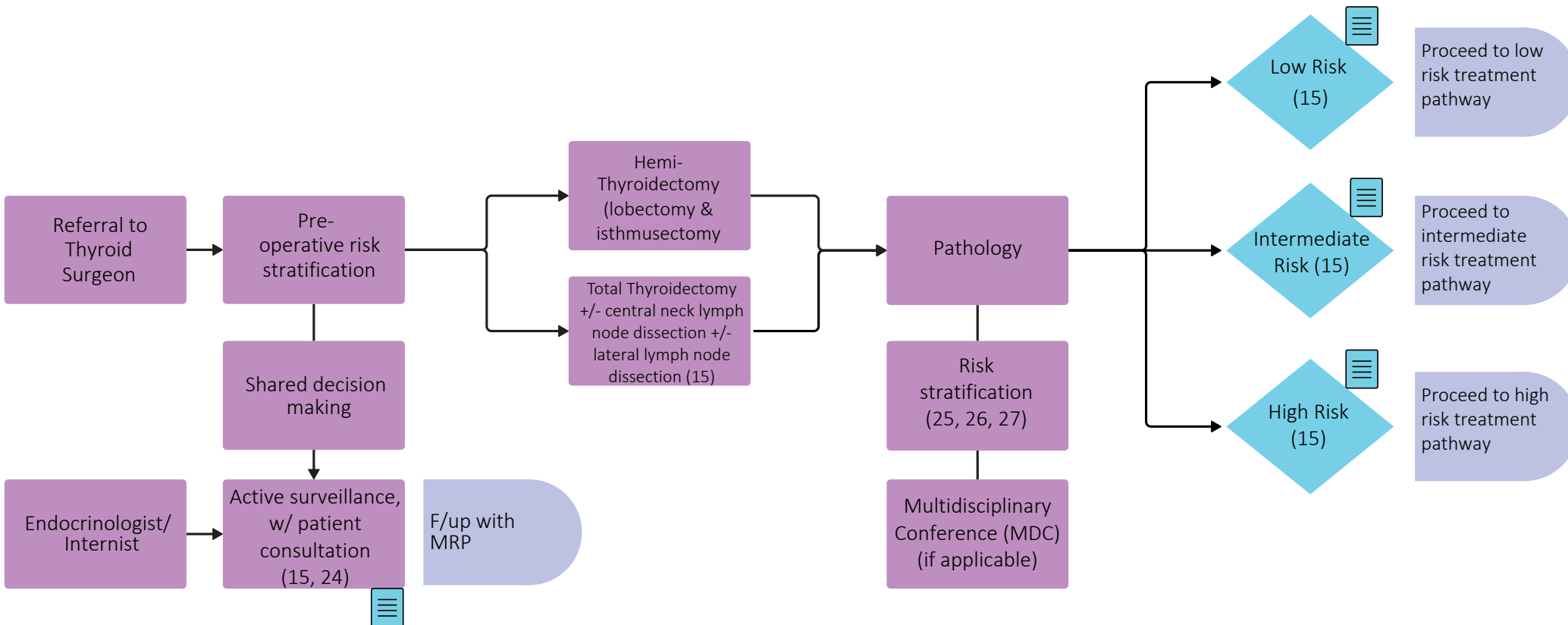
Regular symptom & performance status assessment (18); Supportive care (2, 19); Sexual & reproductive health (20, 21, 22); Co-morbidity management & medication review; Risk factor mitigation; Clinical trials (where applicable) (6); Goals of care (23); Cultural safety (1); Involvement of PCP



# Head & Neck Tumour Group - Well Differentiated Thyroid Pathway

## Treatment: Surgical Management

Based on ATA risk stratification

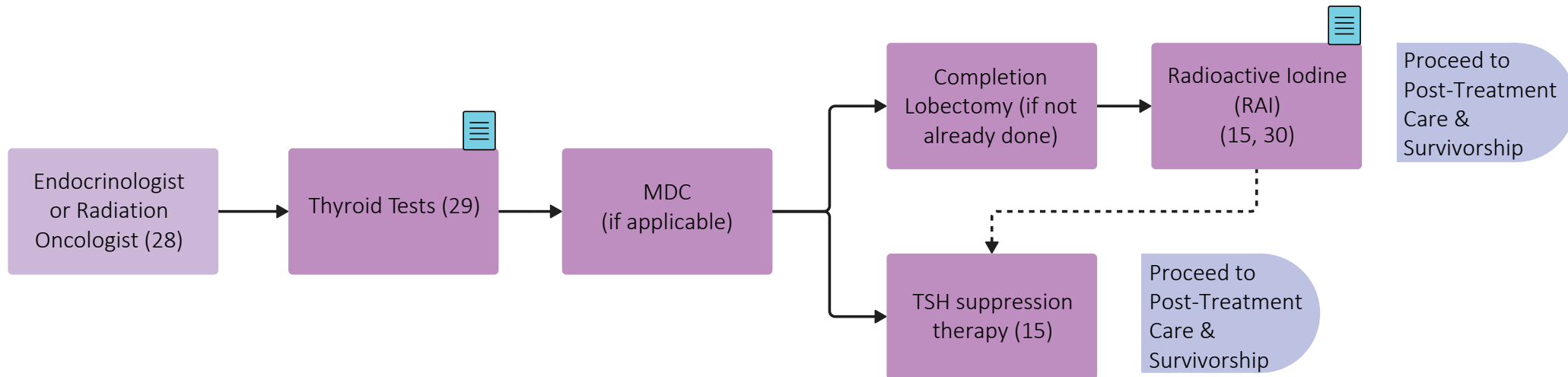


Throughout treatment, consider...

Regular symptom & performance status assessment (18); Supportive care (2, 19); Sexual & reproductive health (20, 21, 22); Co-morbidity management & medication review; Risk factor mitigation; Clinical trials (where applicable)(6); Goals of care (23); Cultural safety (1); Involvement of PCP

# Head & Neck Tumour Group - Well Differentiated Thyroid Pathway

Treatment: ATA Low Risk 

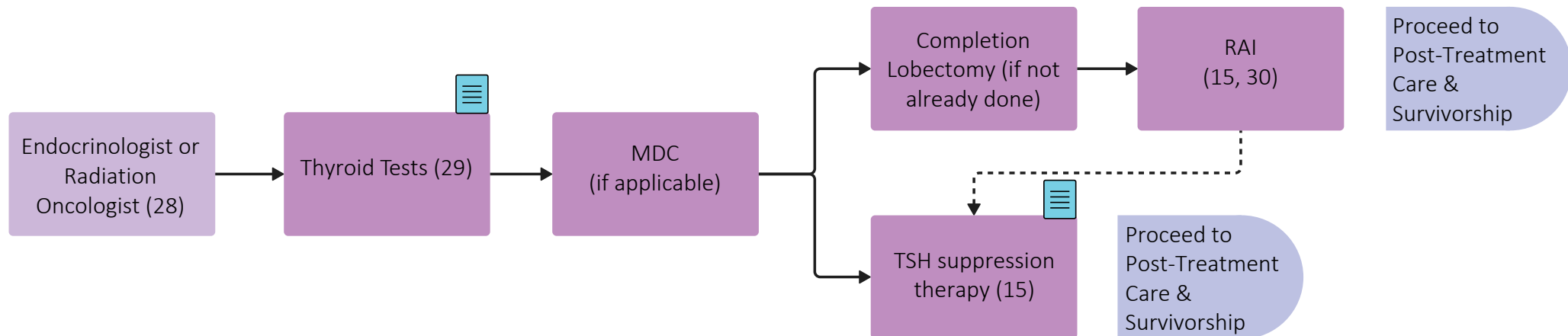


Throughout treatment, consider...

Regular symptom & performance status assessment (18); Supportive care (2, 19); Sexual & reproductive health (20, 21, 22); Co-morbidity management & medication review; Risk factor mitigation; Clinical trials (where applicable)(6); Goals of care (23); Cultural safety (1); Involvement of PCP

# Head & Neck Tumour Group - Well Differentiated Thyroid Pathway

Treatment: ATA Intermediate Risk 

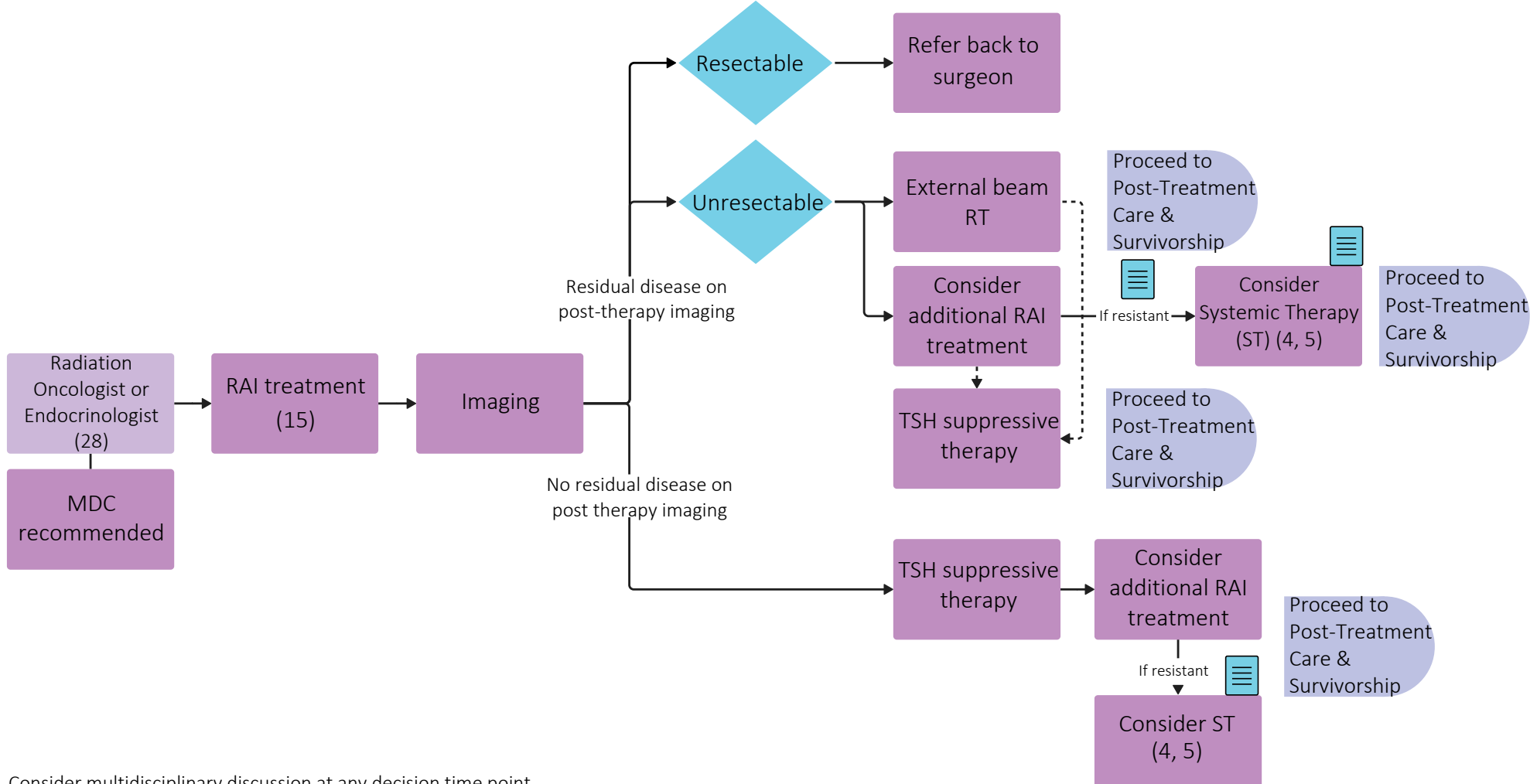


Throughout treatment, consider...

Regular symptom & performance status assessment (18); Supportive care (2, 19); Sexual & reproductive health (20, 21, 22); Co-morbidity management & medication review; Risk factor mitigation; Clinical trials (where applicable)(6); Goals of care (23); Cultural safety (1); Involvement of PCP

# Head & Neck Tumour Group - Well Differentiated Thyroid Pathway

## Treatment: ATA High Risk (without distant mets)



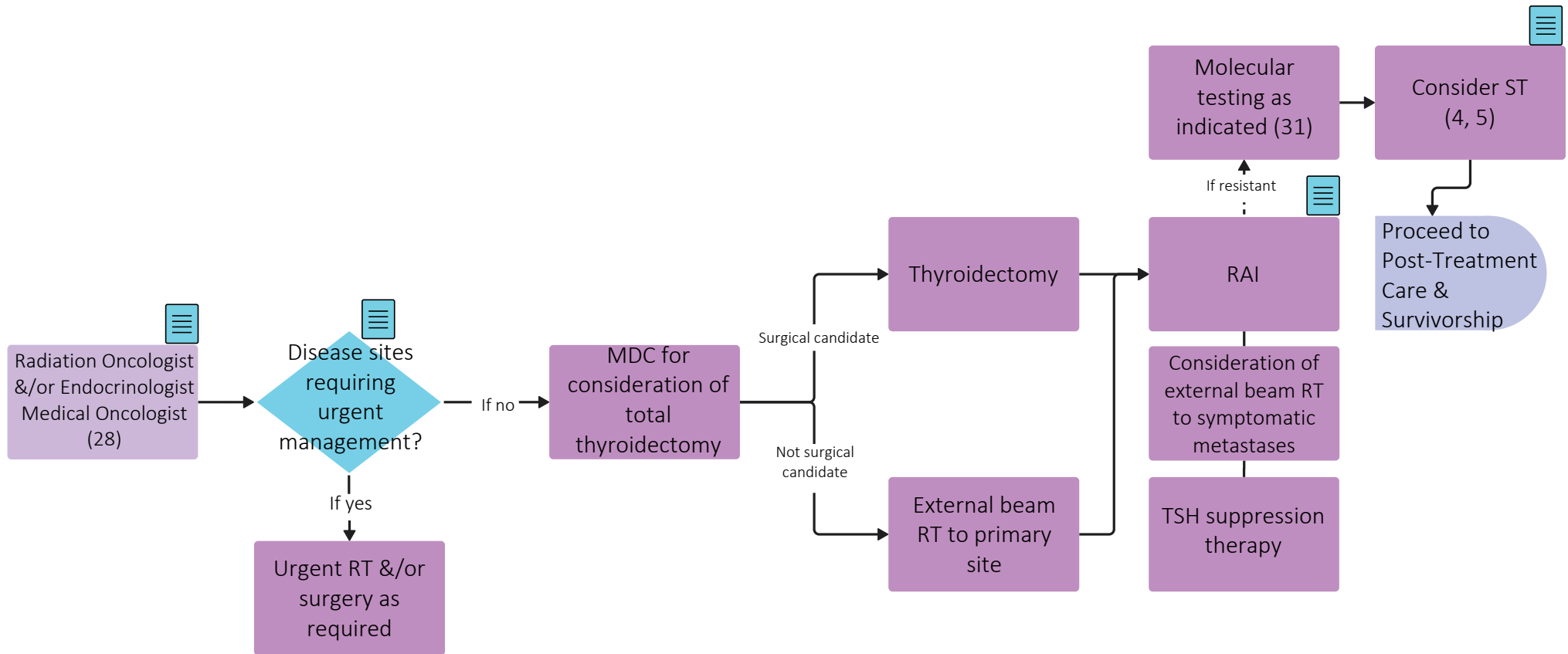
Consider multidisciplinary discussion at any decision time point

Throughout treatment, consider...

Regular symptom & performance status assessment (18); Supportive care (2, 19); Sexual & reproductive health (20, 21, 22); Co-morbidity management & medication review; Risk factor mitigation; Clinical trials (where applicable) (6); Goals of care (23); Cultural safety (1); Involvement of PCP

# Head & Neck Tumour Group - Well Differentiated Thyroid Pathway

## Treatment: ATA High Risk (with upfront distant mets)



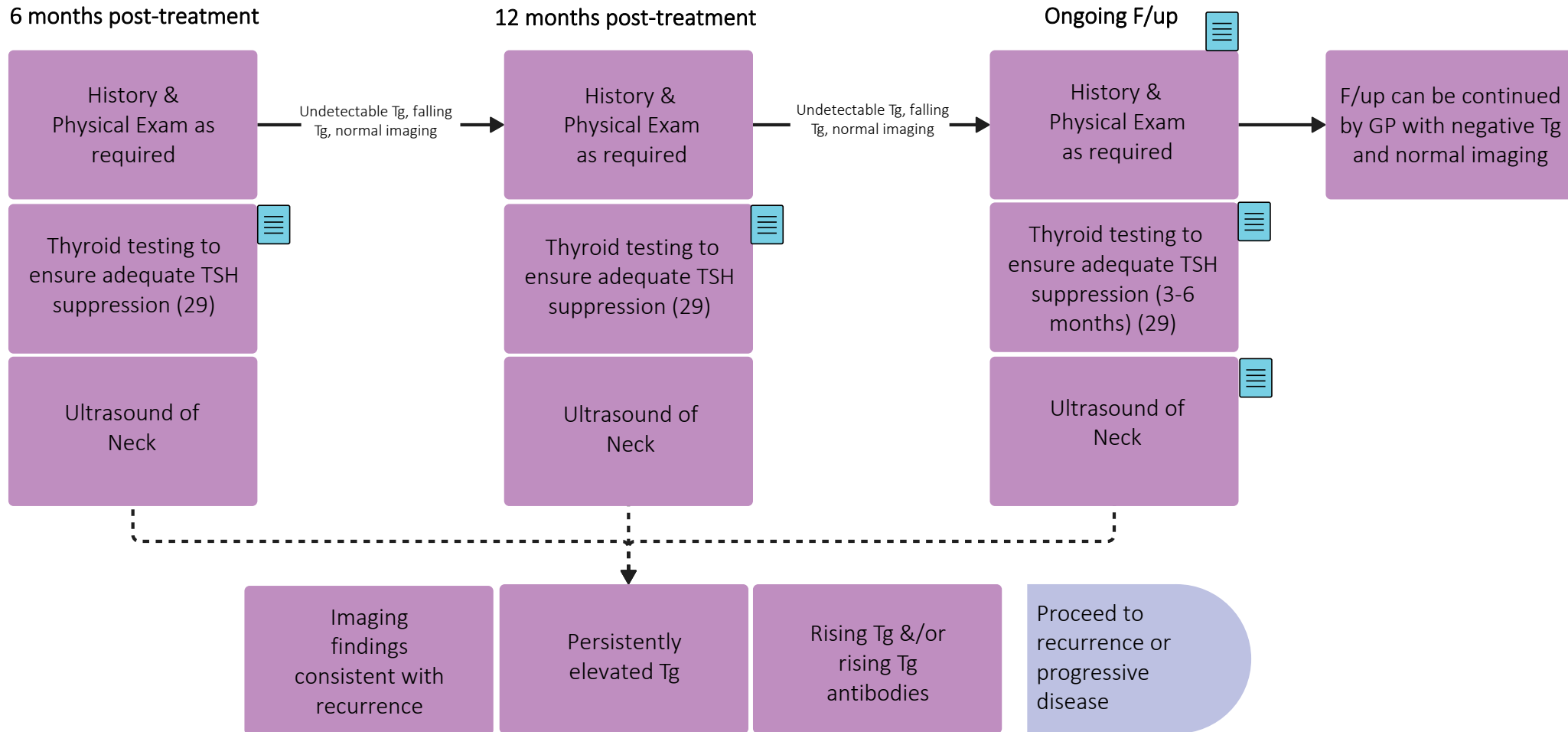
Consider multidisciplinary discussion at any decision time point

Throughout treatment, consider...

Regular symptom & performance status assessment (18); Supportive care (2, 19); Sexual & reproductive health (20, 21, 22); Co-morbidity management & medication review; Risk factor mitigation; Clinical trials (where applicable)(6); Goals of care (23); Cultural safety (1); Involvement of PCP

# Head & Neck Tumour Group - Well Differentiated Thyroid Pathway

## Post-Treatment Care & Survivorship

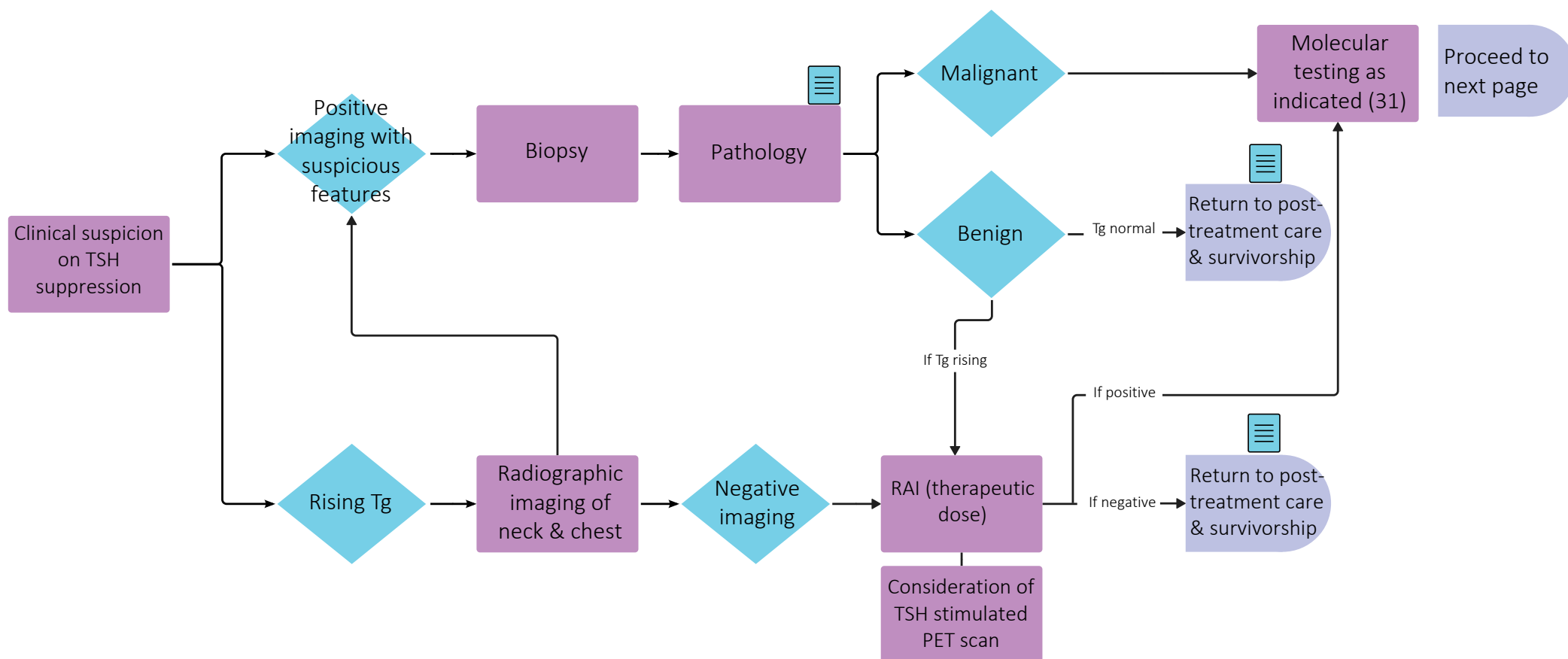


Throughout treatment, consider...

Regular symptom & performance status assessment (18); Supportive care (2, 19); Sexual & reproductive health (20, 21, 22); Co-morbidity management & medication review; Risk factor mitigation; Clinical trials (where applicable)(6); Goals of care (23); Cultural safety (1); Involvement of PCP

# Head & Neck Tumour Group - Well Differentiated Thyroid Pathway

## Recurrence or Progressive Disease (Pg. 1)

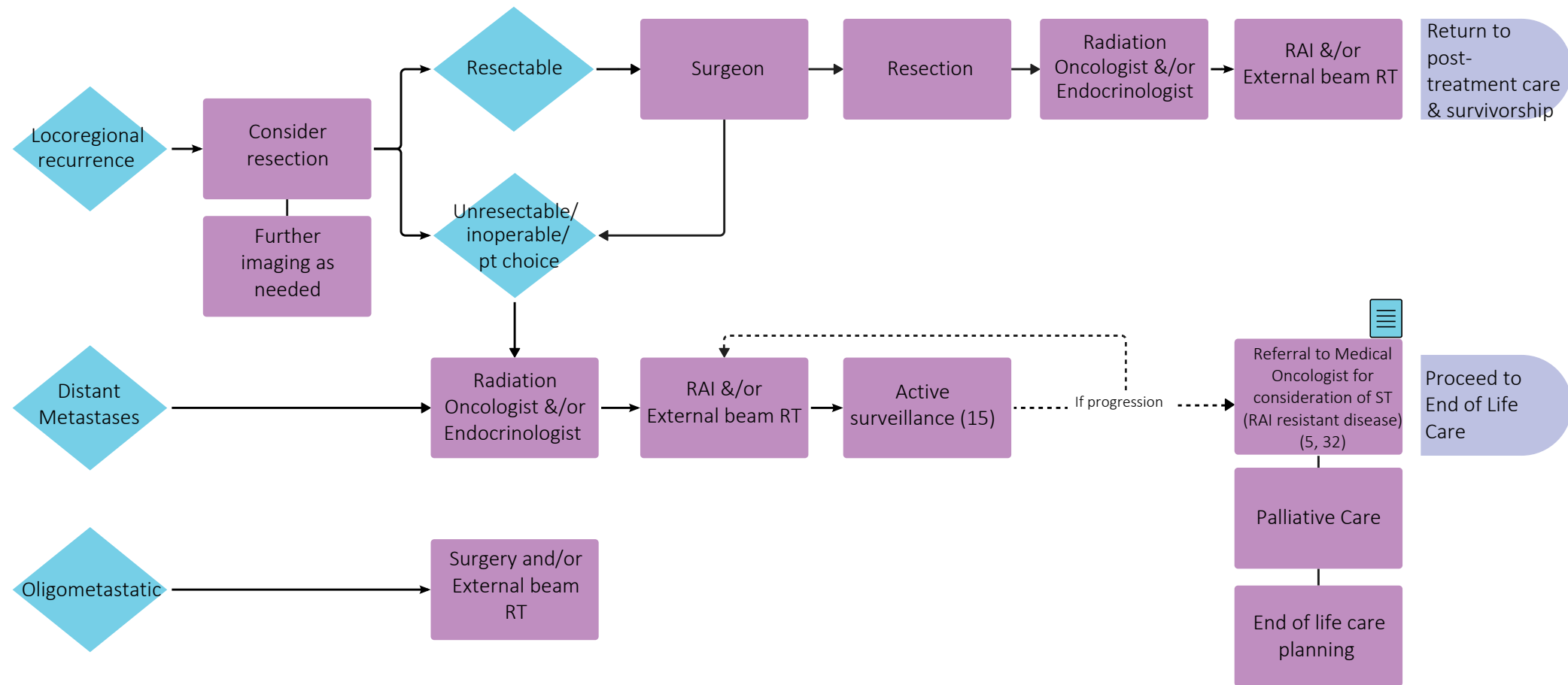


Throughout treatment, consider...

Regular symptom & performance status assessment (18); Supportive care (2, 19); Sexual & reproductive health (20, 21, 22); Co-morbidity management & medication review; Risk factor mitigation; Clinical trials (where applicable)(6); Goals of care (23); Cultural safety (1); Involvement of PCP

# Head & Neck Tumour Group - Well Differentiated Thyroid Pathway

## Recurrence or Progressive Disease (Pg. 2)



Consider multidisciplinary discussion at any decision time point

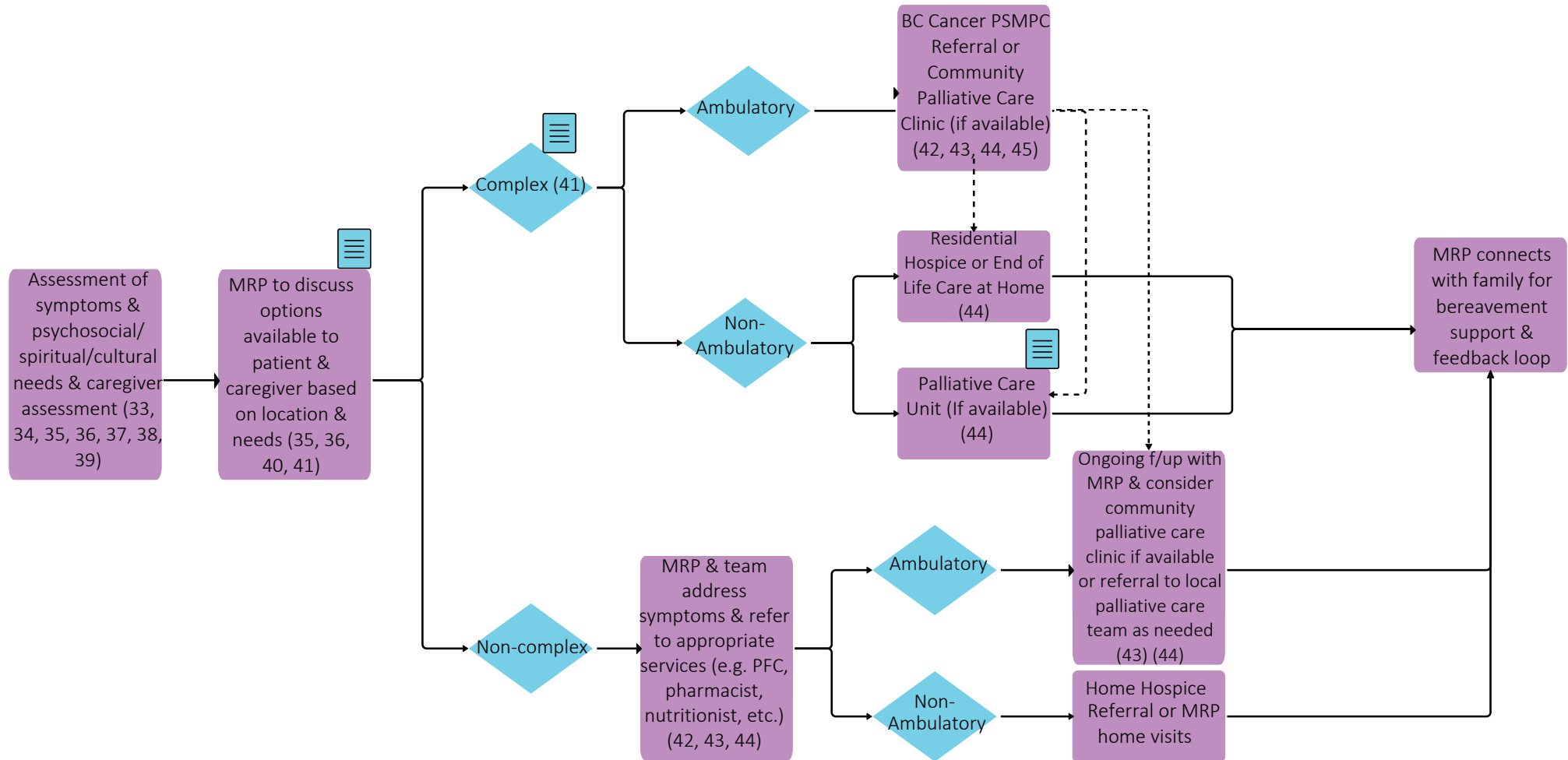
Throughout treatment, consider...

Regular symptom & performance status assessment (18); Supportive care (2, 19); Sexual & reproductive health (20, 21, 22); Co-morbidity management & medication review; Risk factor mitigation; Clinical trials (where applicable)(6); Goals of care (23); Cultural safety (1); Involvement of PCP



# Head & Neck Tumour Group - Well Differentiated Thyroid Pathway

## End of Life Care



Throughout treatment, consider...

Goals of Care Discussions & Consideration of Cultural Safety (1, 40, 41, 46, 47, 48, 49, 50)

# Head & Neck Tumour Group - Well Differentiated Thyroid Pathway

## Subject Matter Expert Working Group & COIs

**Nicole Chau**, Project Lead, Medical Oncologist  
Bayer, Lilly, EMD Serono, Roche, BMS Beigene Roche ERASCA

**Sarah Hamilton**, Project Lead, Radiation Oncologist  
No disclosures

**Sam Wiseman**, Project Lead, General Surgeon  
No disclosures

**Donald Anderson**, Surgical Oncologist  
No disclosures

**Scott Durham**, Surgical Oncologist  
No disclosures

**Sabrina Gill**, Endocrinologist  
BI, Lilly, Amgen, Merck

**Katie Jasper**, Radiation Oncologist  
No disclosures

**Will Jiang**, Radiation Oncologist  
No disclosures

**Angela Lin**, Radiation Oncologist  
No disclosures

**Jinesa Moodley**, Pathologist  
No disclosures

**Tony Ng**, Pathologist  
Bayer, Roche

**Eitan Prisman**, Surgical Oncologist  
No disclosures

**George Sexsmith**, Nuclear Medicine  
No disclosures

**Angela Thermann**, GPO  
No disclosures

**Eric Tran**, Radiation Oncologist  
No disclosures

**Jonn Wu**, Radiation Oncologist  
Precision RDX

**Allison Ye**, Radiation Oncologist  
AstraZeneca

## Pathway Program Team

**Yashpal Bhatia**, Tumour Group Coordinator, Provincial Programs  
**Tammy Currie**, Executive Director, Provincial Programs  
**Amilya Ladak**, Policy Analyst, Tumour Groups  
**James Loudon**, Director, Provincial Programs  
**Shaifa Nanji**, Manager, Tumour Groups  
**Christine Simmons**, Tumour Group Council Chair  
**Elaine Wai**, Senior Executive Director, Medical Affairs and Quality

## Other Stakeholders

Family Practice & GPO  
Indigenous Cancer Control  
Nursing Community of Practice (NCoP)  
Patient and Family Experience Team & Supportive Care  
Radiation Therapists  
Surgical Oncology Network  
Provincial Pharmacy, Pathology & Medical Imaging Teams

*Suggested Citation: BC Cancer. (2024, October). Well Differentiated Thyroid Pathway. [https://www.bccancer.bc.ca/Documents/Thyroid%20Clinical%20Care%20Pathway\\_Published.pdf](https://www.bccancer.bc.ca/Documents/Thyroid%20Clinical%20Care%20Pathway_Published.pdf)*

## Appendix

1. <http://www.phsa.ca/aboriginal-health-site/Documents/IPN%20Fillable%20Referral%20Form.pdf>
2. <http://www.bccancer.bc.ca/our-services/services/supportive-care>
3. <https://cap.phsa.ca/>
4. <http://www.bccancer.bc.ca/health-professionals/clinical-resources/chemotherapy-protocols/head-neck>
5. <http://www.bccancer.bc.ca/systemic-therapy-site/Documents/Policy%20and%20Forms/Patient%20assistance%20programs.pdf>
6. <https://www.bccrc.ca/dept/cid/clinical-trials>
7. <http://www.bccancer.bc.ca/health-professionals/clinical-resources/smoking-cessation-program>
8. <http://www.bccancer.bc.ca/prevent/alcohol/reduce-your-risk>
9. <http://www.bccancer.bc.ca/books/Documents/Clinical%20Care%20Pathways/Patient%20Conference%20Order.pdf>
10. <http://www.bccancer.bc.ca/health-professionals/clinical-resources/pharmacy#Contact--info>
11. <http://www.bccancer.bc.ca/our-services/services/late-effects-assessment-follow-up>
12. <http://www.bccancer.bc.ca/our-services/services/hereditary-cancer>
13. <http://www.raceconnect.ca/contact-us/>
14. [https://www.jacr.org/article/S1546-1440\(17\)30186-2/fulltext](https://www.jacr.org/article/S1546-1440(17)30186-2/fulltext)
15. <https://www.liebertpub.com/doi/pdf/10.1089/thy.2015.0020>
16. <https://www.liebertpub.com/doi/10.1089/thy.2023.0141>
17. [https://www.jacr.org/article/S1546-1440\(17\)30186-2/fulltext](https://www.jacr.org/article/S1546-1440(17)30186-2/fulltext)
18. <https://www.uptodate.com/contents/image?imageKey=HEME%2F72901>
19. <http://www.bccancer.bc.ca/our-services/services/support-programs>
20. <https://www.olivefertility.com/referring-physicians>
21. <https://www.pacificfertility.ca/physician-resources>
22. <http://www.bccancer.bc.ca/health-info/coping-with-cancer/managing-symptoms-side-effects/sexual-health>
23. <http://www.bccancer.bc.ca/new-patients-site/Documents/ACP-goals-of-care-orders.pdf>
24. <https://www.thyroid.org/professionals/ata-professional-guidelines/>
25. <https://www.liebertpub.com/doi/full/10.1089/thy.2017.0309>
26. [https://www.uclahealth.org/medical-services/surgery/endocrine-surgery/patient-resources/patient-education/macis-score-calculator#:~:text=MACIS%20%3D%203.1%20\(if%20aged%20less,\(if%20distant%20metastases%20present\)](https://www.uclahealth.org/medical-services/surgery/endocrine-surgery/patient-resources/patient-education/macis-score-calculator#:~:text=MACIS%20%3D%203.1%20(if%20aged%20less,(if%20distant%20metastases%20present))
27. <https://www.thyroid.org/professionals/calculators/thyroid-cancer-staging-calculator/>
28. <http://www.bccancer.bc.ca/health-professionals-site/Documents/Patient-Referral-Form.pdf>
29. <https://www.thyroid.org/thyroid-function-tests/>
30. <https://www.thyroid.org/radioactive-iodine/>
31. <https://cancergeneticslab.ca/requisitions/>
32. <http://www.bccancer.bc.ca/health-professionals/clinical-resources/chemotherapy-protocols/head-neck#Other%20>
33. <http://www.bccancer.bc.ca/our-services/centres-clinics/bc-cancer-vancouver/epicc>
34. [https://www2.gov.bc.ca/assets/gov/health/practitioner-pro/bc-guidelines/palliative1\\_appendix\\_a.pdf](https://www2.gov.bc.ca/assets/gov/health/practitioner-pro/bc-guidelines/palliative1_appendix_a.pdf)
35. <https://www.bc-cpc.ca/publications/symptom-management-guidelines/>
36. <https://www2.gov.bc.ca/gov/content/health/practitioner-professional-resources/bc-guidelines/palliative-care>

## Appendix

37. <https://www2.gov.bc.ca/gov/content/health/practitioner-professional-resources/pharmacare/prescribers/plan-p-bc-palliative-care-benefits-program>
38. <http://www.bccancer.bc.ca/our-services/services/indigenous-cancer-control>
39. <http://www.bccancer.bc.ca/books/Documents/Clinical%20Care%20Pathways/Revised%20PSMPC%20Questionnaire%20Pink%20Form%202020-21.pdf>
40. <http://www.bccancer.bc.ca/new-patients-site/Documents/SeriousIllnessConversationGuideCard.pdf>
41. <http://www.phsa.ca/health-info/medical-assistance-in-dying>
42. <http://www.bccancer.bc.ca/managing-symptoms-site/Documents/PSMPC-Referral-Form-for-All-BC-Cancer-Centres.pdf>
43. <http://www.bccancer.bc.ca/our-services/services/supportive-care/pain-symptom-management#What--we--do>
44. [https://vancouver.pathwaysbc.ca/service\\_categories/24](https://vancouver.pathwaysbc.ca/service_categories/24)
45. [http://www.bccancer.bc.ca/new-patients-site/Documents/MIPPC\\_Referral\\_Form.pdf](http://www.bccancer.bc.ca/new-patients-site/Documents/MIPPC_Referral_Form.pdf)
46. <http://www.bccancer.bc.ca/new-patients-site/Documents/Goals%20of%20Care%20Orders%20Form%20June%202018%20Final.pdf>
47. <https://www2.gov.bc.ca/assets/gov/people/seniors/health-safety/pdf/myvoice-advancecareplanningguide.pdf>
48. <https://www2.gov.bc.ca/gov/content/family-social-supports/seniors/health-safety/advance-care-planning>
49. <http://www.bccancer.bc.ca/managing-symptoms-site/Documents/When-Life-Nearing-its-End.pdf>
50. <http://www.bccancer.bc.ca/new-patients-site/Documents/ACP-tips-for-oncology-professionals.pdf>
51. <http://www.phsa.ca/health-professionals/professional-resources/language-services/translation>
52. <http://www.bccancer.bc.ca/our-services/services/library>