

**Primary Care Practitioners**  
(Family Practice)

**Indigenous Cancer Care** ([20](#), [21](#), [22](#))

**Supportive Care**  
(Counselling, Psychiatry, Nutrition, Speech Language Pathology, Physiotherapy, Pain & Symptom Management/Palliative Care)

This figure represents a general pathway of care that most people with cancer will experience. It shows

- The major phases of a cancer journey
- How a person might progress through each phase
- Key supportive services that are available throughout each person's cancer journey

Please visit the [Clinical Pathways Web](#) page for

- Tumour Group Clinical Pathways
- Patient Companion Guide
- Methodology Reports

## Target Population

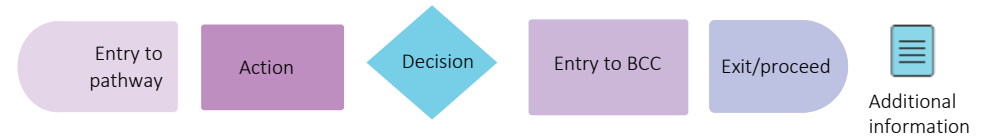
The target population for this pathway include health care providers such as primary care practitioners, oncologists, specialists, nurses, and other members of a health care team including allied health providers. Healthcare administrators across BC Cancer and the health authorities may also benefit from this resource for systems and operational planning.

## Pathway Disclaimer

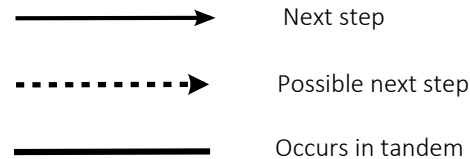
This pathway is an informational resource, intended to provide a high-level overview of the treatment journey a patient in British Columbia may receive. This pathway is not a substitute for medical advice and clinical judgment is still required as not all care trajectories will follow the proposed steps outlined in the pathway. This resource may not reflect all available evidence as research continues to evolve rapidly and BC Cancer is not responsible for any incomplete information. Furthermore, BC Cancer and those involved in developing this pathway are not liable for any incidental or consequential outcomes related to the information in this pathway. Anyone using the information provided in this pathway does so at their own risk.

## Pathway Map Legend

### Shape Guide



### Line Guide



## Pathway Map Considerations

This pathway is intended as a high-level resource and therefore does not include specific recommendations on specific systemic therapy protocols or radiation therapy doses. Instead, additional information can be sought via the inserted hyperlinks to resources that may aid a clinician in their treatment planning. The level of detail for each pathway was guided by the tumor group lead and intentionally kept high-level and represents the overall ideal pathway of care for a patient in general. Each patient will have individual needs and each cancer centre may have variation in the way care is delivered, but overall the intent was to represent the pathway that the majority of patients will follow.

## General Resources

- Indigenous Patient Navigator Referral Form (2)**: <http://www.phsa.ca/aboriginal-health-site/Documents/IPN%20Fillable%20Referral%20Form.pdf>
- Supportive Care (13)**: <http://www.bccancer.bc.ca/our-services/services/supportive-care>
- Compassionate Access Program (CAP) (3)**: <https://cap.phsa.ca/>
- Gynecology Chemotherapy Protocols (4)**: <https://www.bccancer.bc.ca/health-professionals/clinical-resources/chemotherapy-protocols/gynecology#Endometrial>
- Manufacturer Patient Assistance Programs (5)**: <http://www.bccancer.bc.ca/systemic-therapy-site/Documents/Policy%20and%20Forms/Patient%20assistance%20programs.pdf>
- BC Cancer Research Clinical Trials (18)**: <https://www.bccrc.ca/dept/cid/clinical-trials>
- Smoking Cessation Program (42)**: <http://www.bccancer.bc.ca/health-professionals/clinical-resources/smoking-cessation-program>
- Alcohol Reduction (43)**: <https://www.bccancer.bc.ca/prevention/alcohol/reduce-your-risk>
- MDC Referral Form (6)**: <http://www.bccancer.bc.ca/books/Documents/Clinical%20Care%20Pathways/Patient%20Conference%20Order.pdf>
- Pharmacy Contact Info (7)**: <http://www.bccancer.bc.ca/health-professionals/clinical-resources/pharmacy#Contact--info>
- Language & Translation Services (44)**: <http://www.phsa.ca/health-professionals/professional-resources/language-services/translation>
- BC Cancer Library (45)**: <http://www.bccancer.bc.ca/our-services/services/library>
- Health Connect Registry (9)**: <https://www.healthlinkbc.ca/find-care/health-connect-registry>
- Indigenous Cancer Control (20)**: <https://www.bccancer.bc.ca/our-services/services/indigenous-cancer-control>
- San'yas Indigenous-Specific Anti-Racism Training (21)**: <https://www.bccancer.bc.ca/our-services/services/indigenous-cancer-control>
- Indigenous-Specific Anti-Racism (ISAR) Self-Directed Learning (22)**: <https://centreforlearning.bcmhsus.ca/project/isar>

## Abbreviations

**BS/BSO**: Bilateral Salpingo-Oophorectomy  
**BMI**: Body Mass Index  
**CT**: Computed Tomography  
**D&C**: Dilation and Curettage  
**EBRT**: External Beam Radiation Therapy  
**EC**: Endometrial Cancer  
**ER**: Estrogen Receptor  
**EOL**: End of Life  
**FIGO**: International Federation of Gynecology and Obstetrics  
**FP**: Family Practice  
**HPV**: Human Papillomavirus  
**IHC**: Immunohistochemistry  
**IUD**: Intrauterine Device  
**LVSI**: Lymphovascular Space Invasion

**MMRd/MMRp**: Mismatch Repair deficient/proficient  
**MRI**: Magnetic Resonance Imaging  
**MDC**: Multidisciplinary Conference/Discussion  
**MRP**: Most Responsible Provider  
**NSMP**: No specific Molecular Profile  
**MRI**: Magnetic Resonance Imaging  
**PAP smear**: Papanicolaou smear  
**PCP**: Primary Care Provider  
**PFC**: Patient & Family Counseling  
**PSMPC**: Pain & Symptom Management & Palliative Care  
**RT**: Radiation Therapy  
**ST**: Systemic Therapy  
**TVUS**: Transvaginal Ultrasound  
**US**: Ultrasound  
**VB**: Vaginal Brachytherapy  
**Wt**: Wild-type

## Additional Information

To learn more about how the Clinical Care Pathways are developed, visit the [Methodology Report](#).

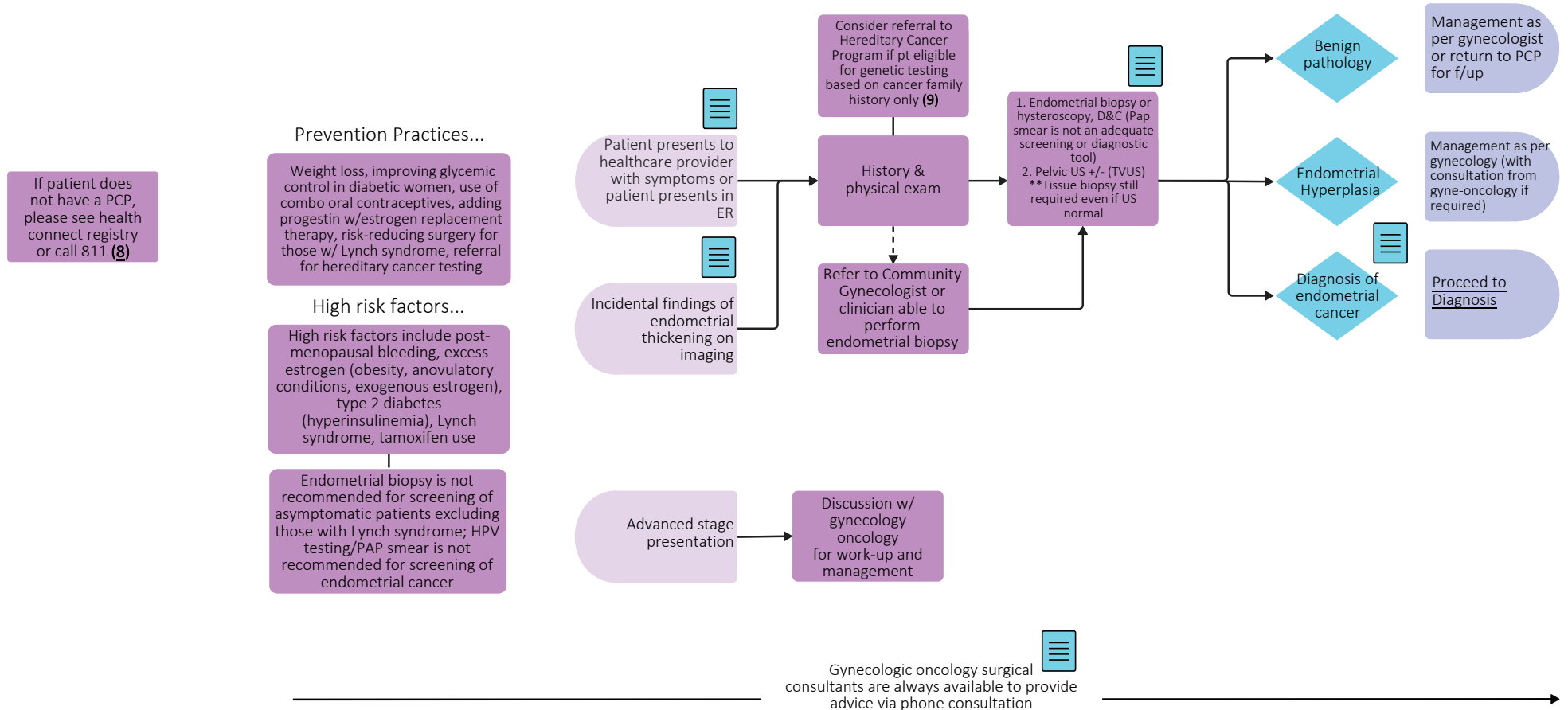
Other Tumour Group Clinical Care Pathways can be found on the [BC Cancer Website](#).

This work was supported by grant funding provided by the Health System Redesign Program.

# Gynecological Tumour Group - Endometrial Pathway

## Pre-Diagnosis

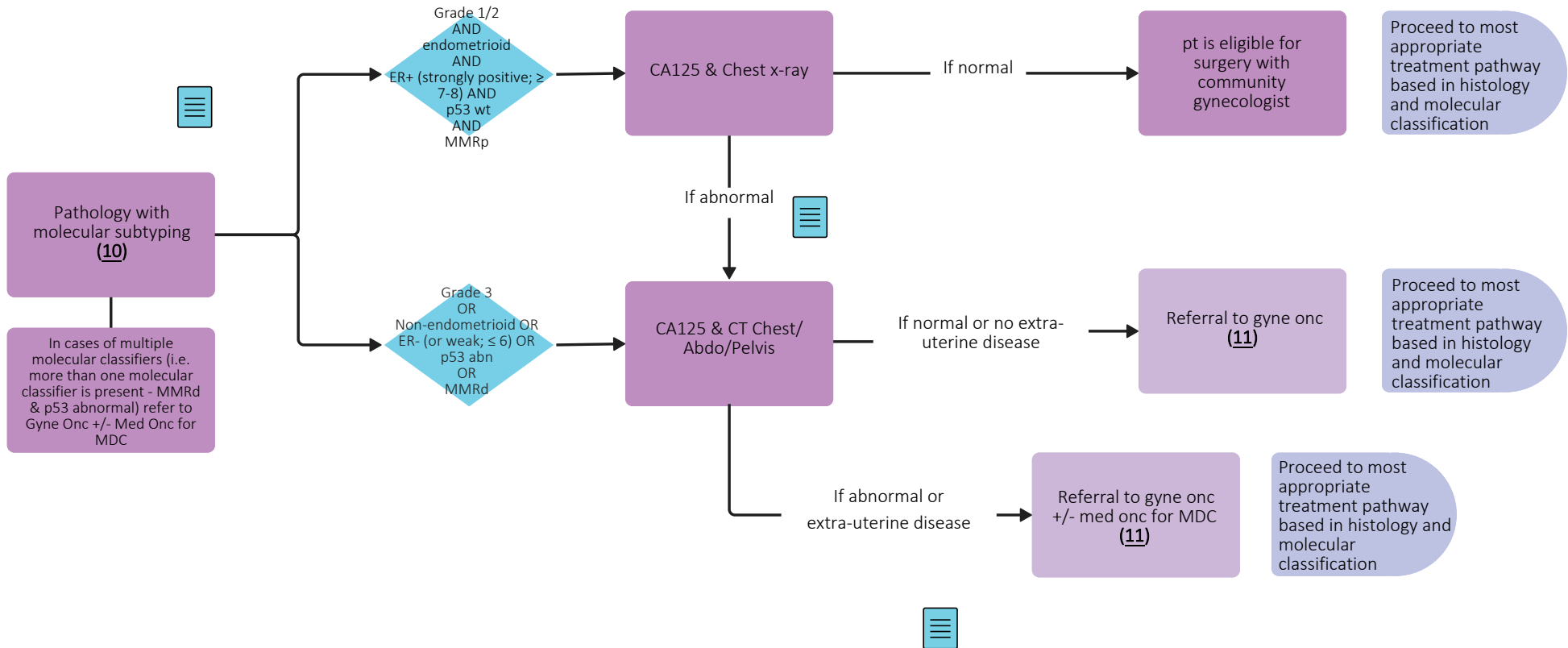
*\*please click reference number to open associated hyperlinks*



## Diagnosis

*\*please click reference number to open associated hyperlinks*

\*Please note this pathway is based on FIGO 2009 Staging



Gynecologic oncology surgical consultants are always available to provide advice via phone consultation

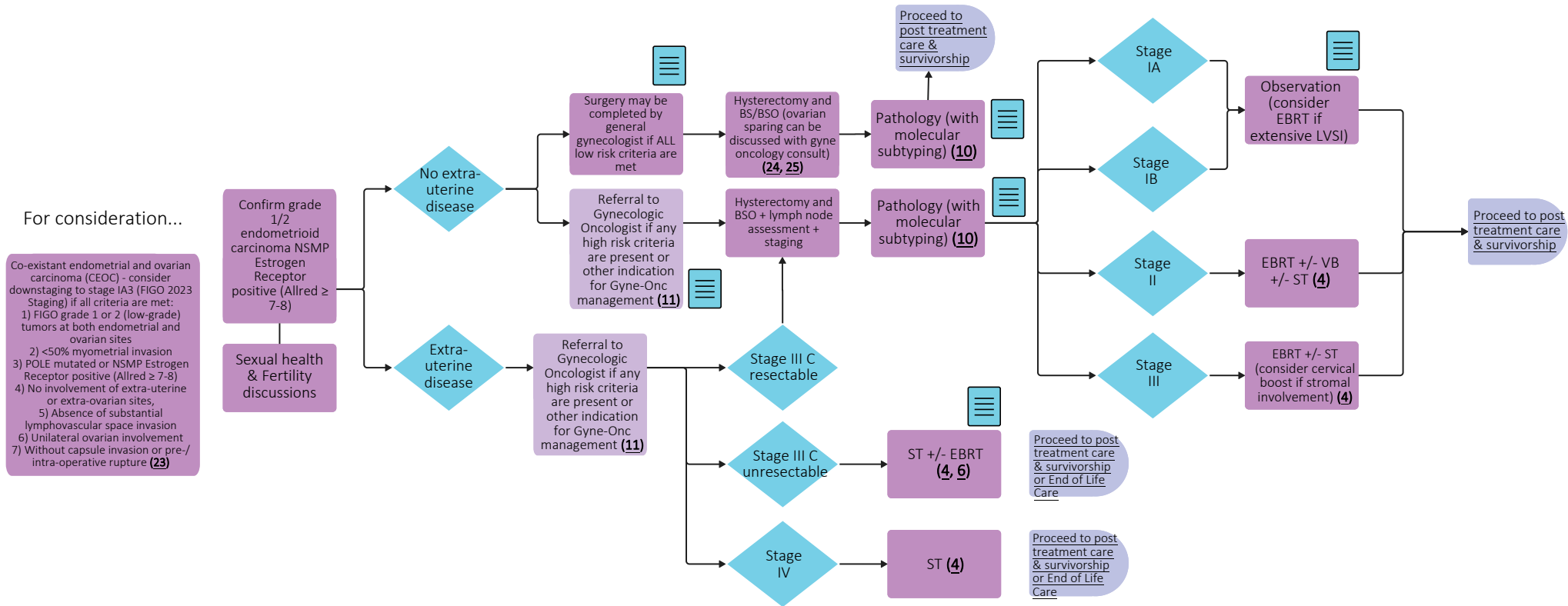
Throughout treatment, consider...

Regular symptom & performance status assessment (12); Oral Oncology/dentistry; Supportive care (13, 14); Sexual & reproductive health (15, 16, 17); Co-morbidity management & medication review; Risk factor mitigation; Clinical trials (where applicable) (18); Goals of care (19); Cultural safety (2, 20, 21, 22); Involvement of PCP; Consider referral to Hereditary Cancer Program based on pt's family history (9)

## NSMP low grade/ER high Treatment: Grade 1/2 Endometrioid and ER high (Allred $\geq$ 7-8)

*\*please click reference number to open associated hyperlinks*

\*Please note this pathway is based on FIGO 2009 Staging



Throughout treatment, consider...

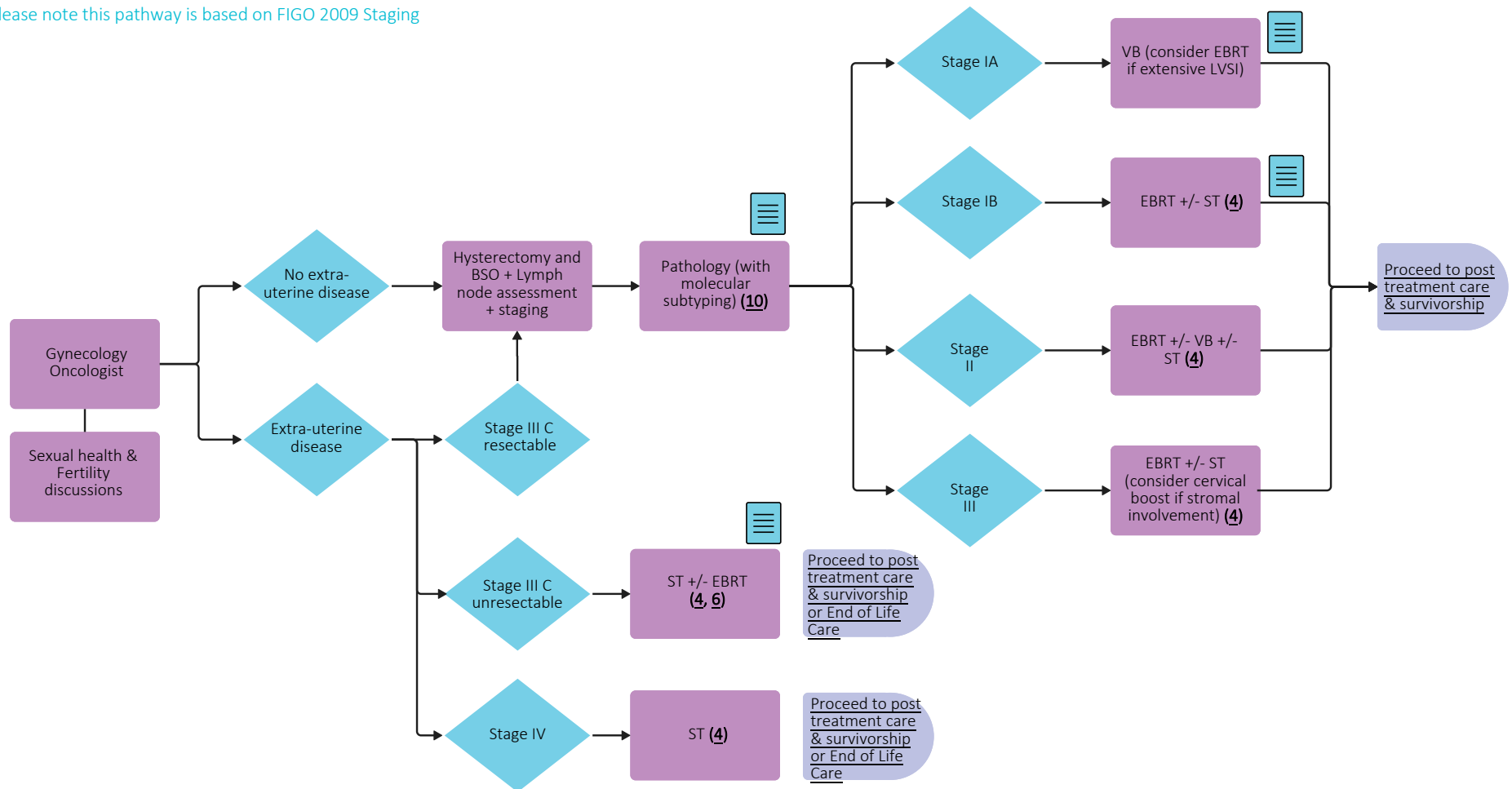
Regular symptom & performance status assessment (12); Oral Oncology/dentistry; Supportive care (13, 14); Sexual & reproductive health (15, 16, 17); Co-morbidity management & medication review; Risk factor mitigation; Clinical trials (where applicable) (18); Goals of care (19); Cultural safety (2, 20, 21, 22); Involvement of PCP; Consider referral to Hereditary Cancer Program based on pt's family history (9)

## NSMP high grade/ER weak/negative Treatment:

## Grade 3 Endometrioid or any grade non-endometrioid Carcinoma or any ER weak/negative (Allred < 7-8)

*\*please click reference number to open associated hyperlinks*

\*Please note this pathway is based on FIGO 2009 Staging



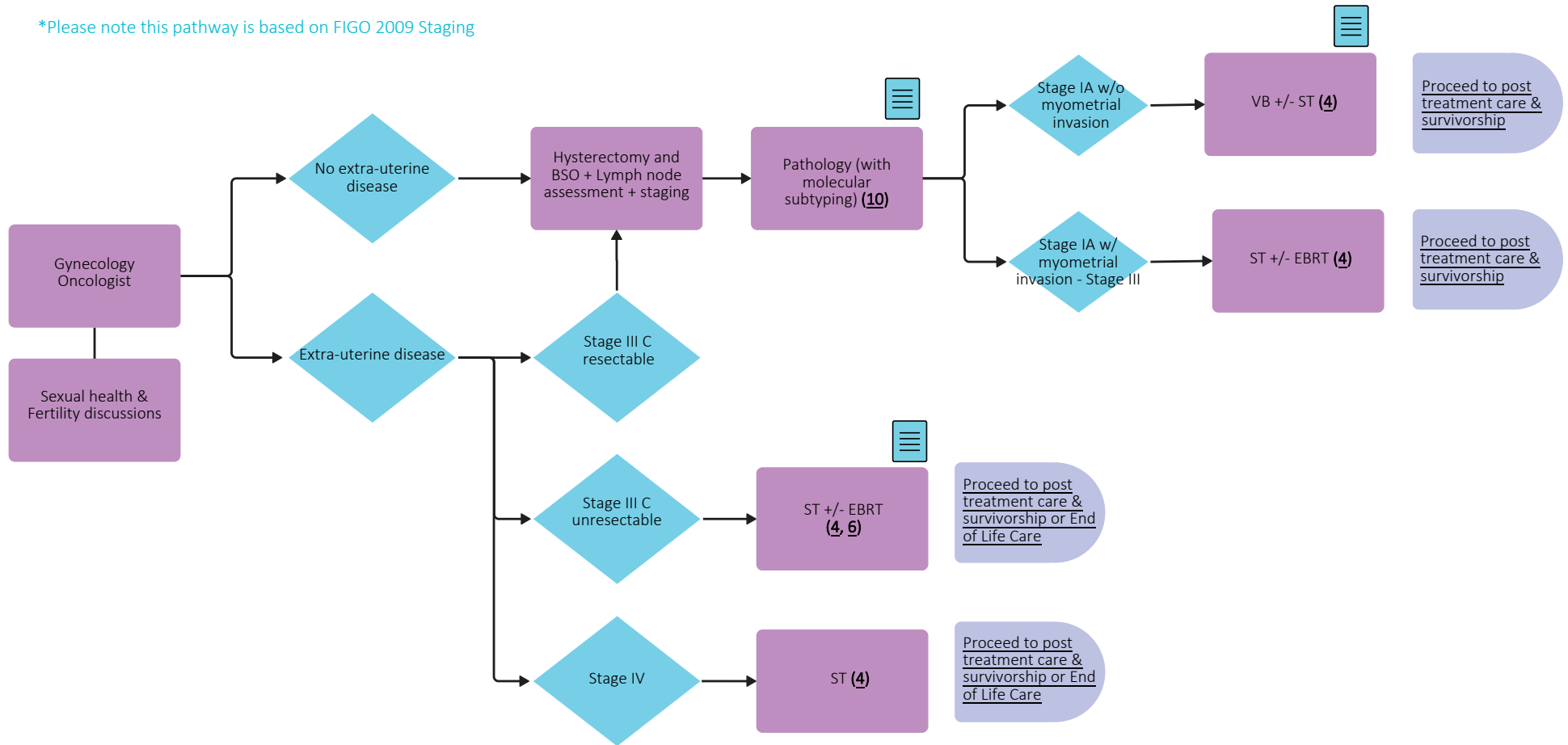
Throughout treatment, consider...

Regular symptom & performance status assessment (12); Oral Oncology/dentistry; Supportive care (13, 14); Sexual & reproductive health (15, 16, 17); Co-morbidity management & medication review; Risk factor mitigation; Clinical trials (where applicable) (18); Goals of care (19); Cultural safety (2, 20, 21, 22); Involvement of PCP; Consider referral to Hereditary Cancer Program based on pt's family history (9)

## Treatment - p53 abnormal

*\*please click reference number to open associated hyperlinks*

\*Please note this pathway is based on FIGO 2009 Staging



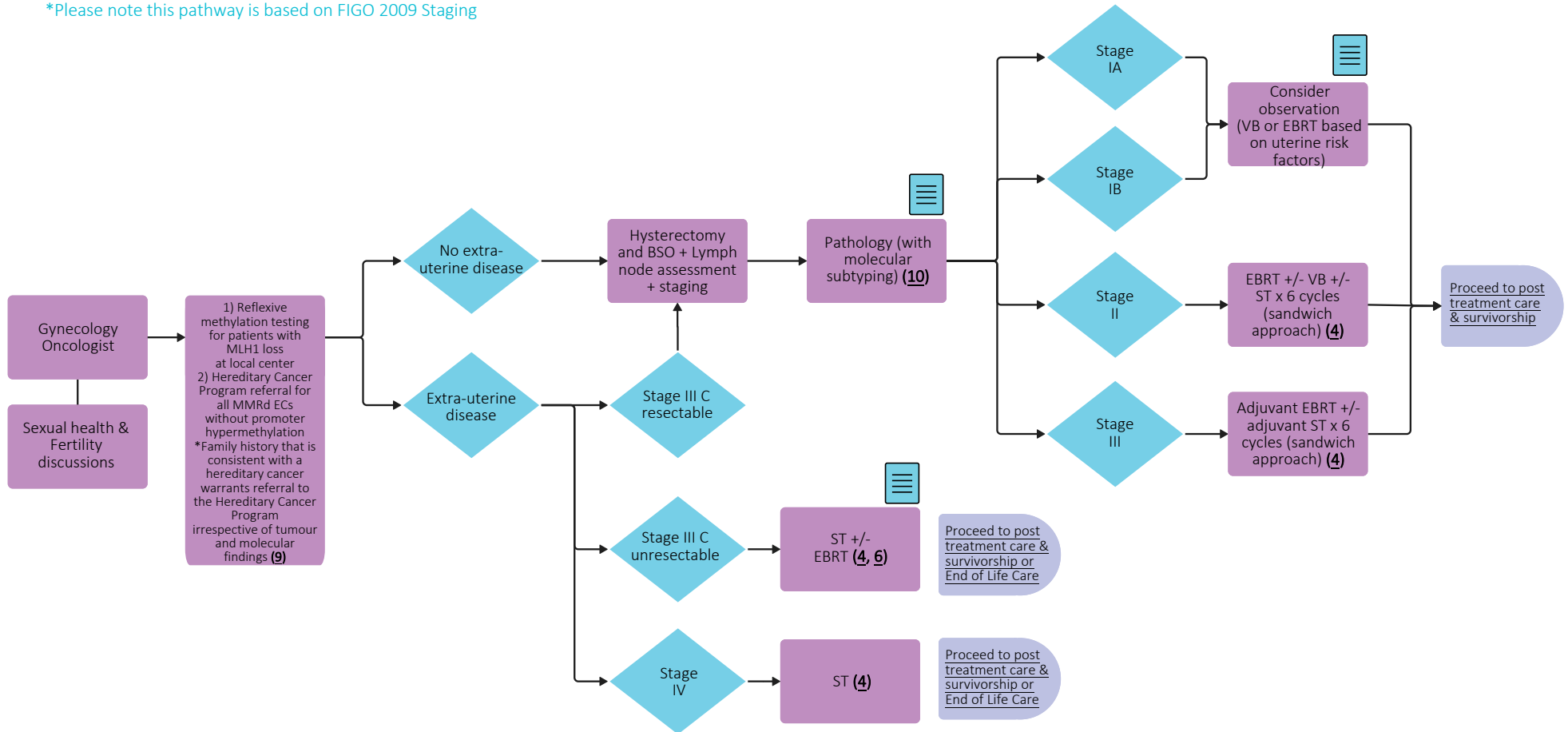
Throughout treatment, consider...

Regular symptom & performance status assessment (12); Oral Oncology/dentistry; Supportive care (13, 14); Sexual & reproductive health (15, 16, 17); Co-morbidity management & medication review; Risk factor mitigation; Clinical trials (where applicable) (18); Goals of care (19); Cultural safety (2, 20, 21, 22); Involvement of PCP; Consider referral to Hereditary Cancer Program based on pt's family history (9)

*\*please click reference number to open associated hyperlinks*

## Treatment - MMRd

\*Please note this pathway is based on FIGO 2009 Staging



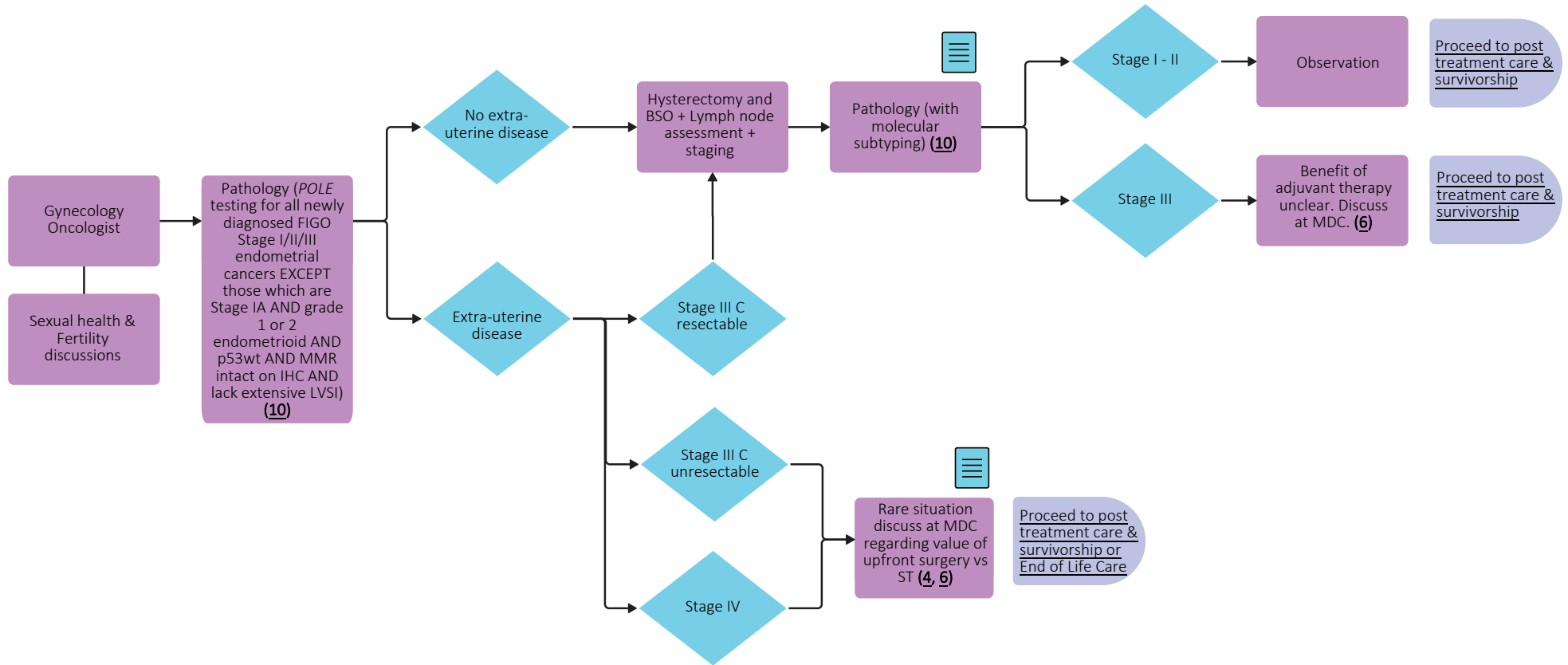
Throughout treatment, consider...

Regular symptom & performance status assessment (12); Oral Oncology/dentistry; Supportive care (13, 14); Sexual & reproductive health (15, 16, 17); Co-morbidity management & medication review; Risk factor mitigation; Clinical trials (where applicable) (18); Goals of care (19); Cultural safety (2, 20, 21, 22); Involvement of PCP; Consider referral to Hereditary Cancer Program based on pt's family history (9)

## Treatment - *POLE* mut

*\*please click reference number to open associated hyperlinks*

\*Please note this pathway is based on FIGO 2009 Staging

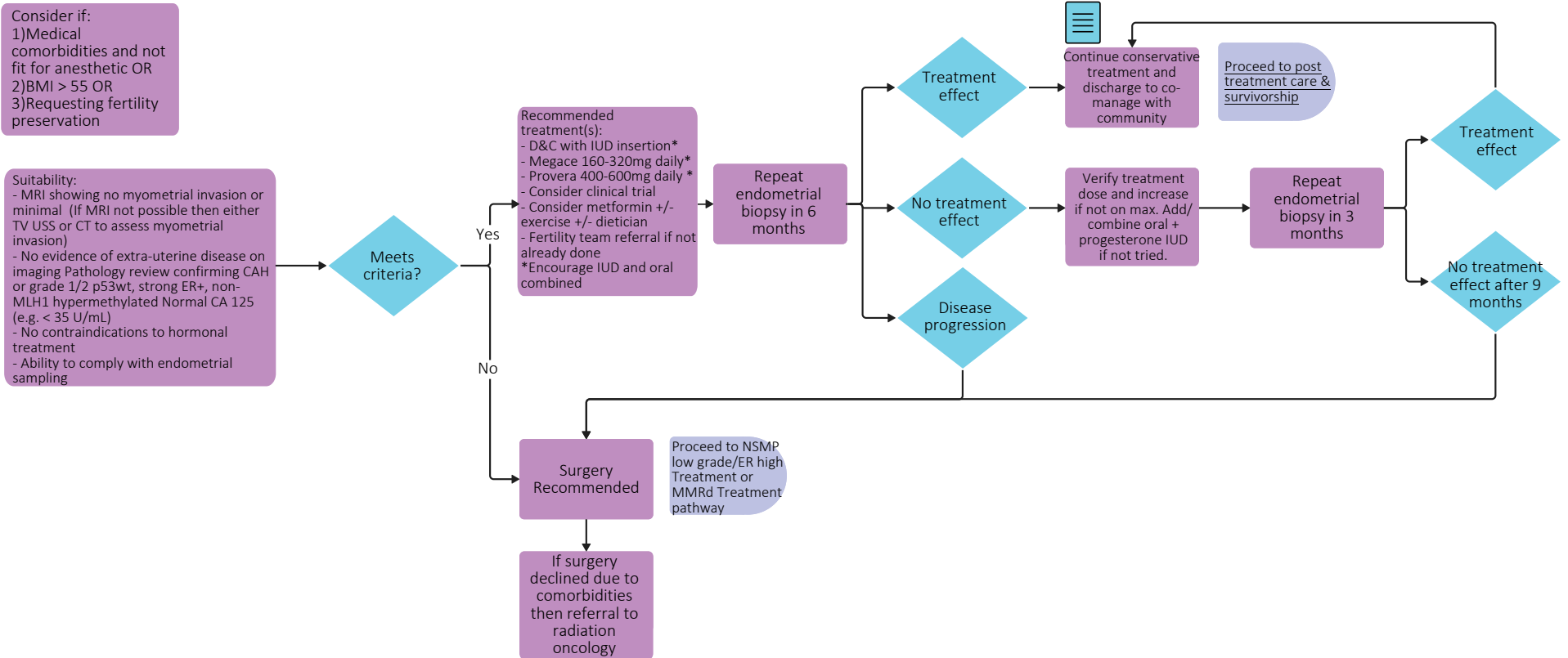


Throughout treatment, consider...

Regular symptom & performance status assessment (12); Oral Oncology/dentistry; Supportive care (13, 14); Sexual & reproductive health (15, 16, 17); Co-morbidity management & medication review; Risk factor mitigation; Clinical trials (where applicable) (18); Goals of care (19); Cultural safety (2, 20, 21, 22); Involvement of PCP; Consider referral to Hereditary Cancer Program based on pt's family history (9)

## Conservative Management of endometrial hyperplasia w/atypia or grade 1 endometrioid adenocarcinoma

*\*please click reference number to open associated hyperlinks*



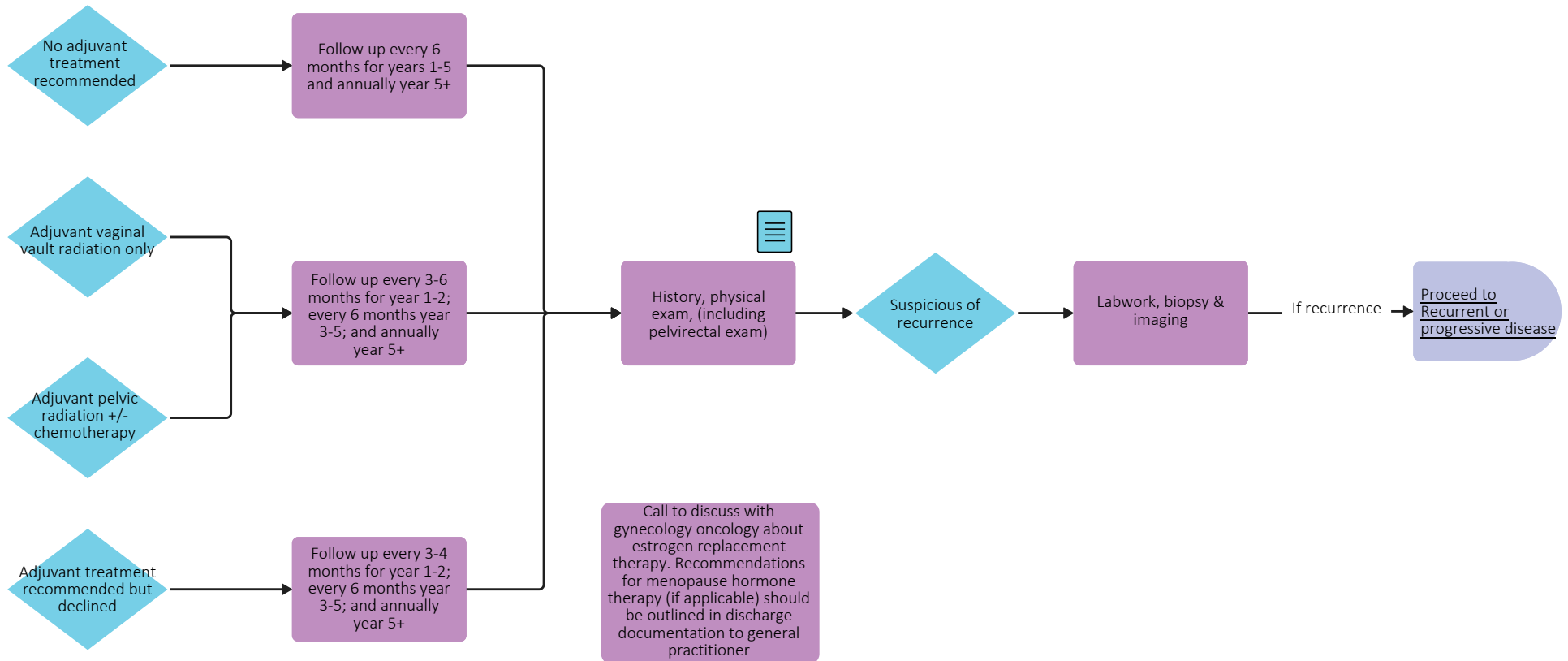
Throughout treatment, consider...

Regular symptom & performance status assessment ([12](#)); Oral Oncology/dentistry; Supportive care ([13](#), [14](#)); Sexual & reproductive health ([15](#), [16](#), [17](#)); Co-morbidity management & medication review; Risk factor mitigation; Clinical trials (where applicable) ([18](#)); Goals of care ([19](#)); Cultural safety ([2](#), [20](#), [21](#), [22](#)); Involvement of PCP; Consider referral to Hereditary Cancer Program based on pt's family history ([9](#))

## Post-Treatment Care & Survivorship

*\*please click reference number to open associated hyperlinks*

Shared model for surveillance can include Gynecology Oncology, Community Gynecology, Primary Care Provider, Radiation Oncology

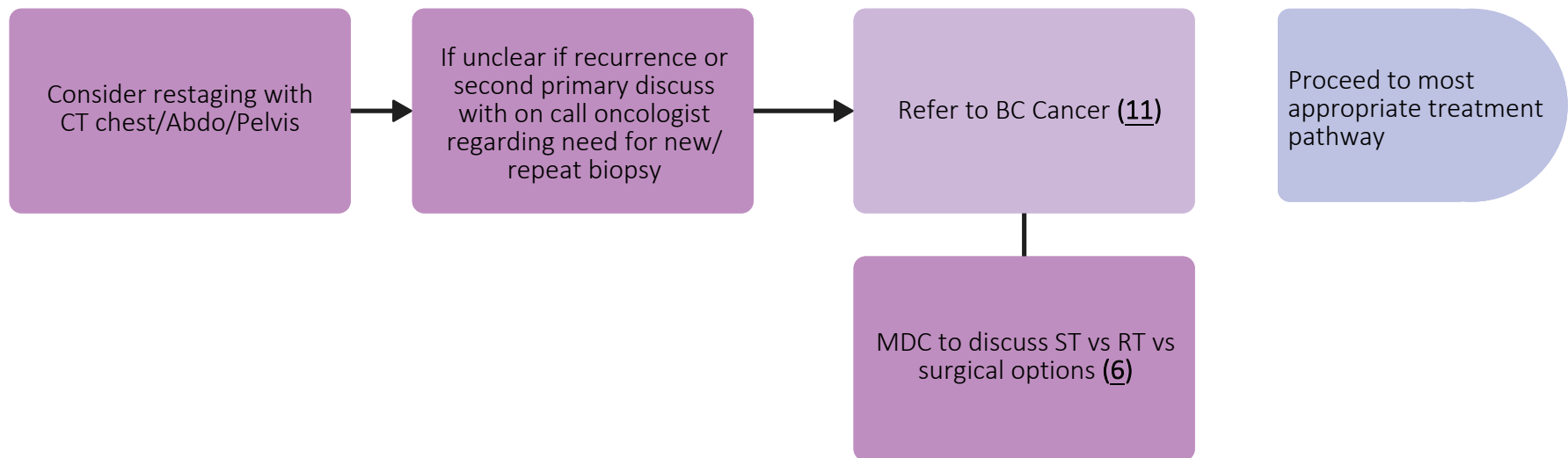


Throughout treatment, consider...

Regular symptom & performance status assessment ([12](#)); Oral Oncology/dentistry; Supportive care ([13](#), [14](#)); Sexual & reproductive health ([15](#), [16](#), [17](#)); Co-morbidity management & medication review; Risk factor mitigation; Clinical trials (where applicable) ([18](#)); Goals of care ([19](#)); Cultural safety ([2](#), [20](#), [21](#), [22](#)); Involvement of PCP; Consider referral to Hereditary Cancer Program based on pt's family history ([9](#))

## Recurrent or Progressive Disease

*\*please click reference number to open associated hyperlinks*

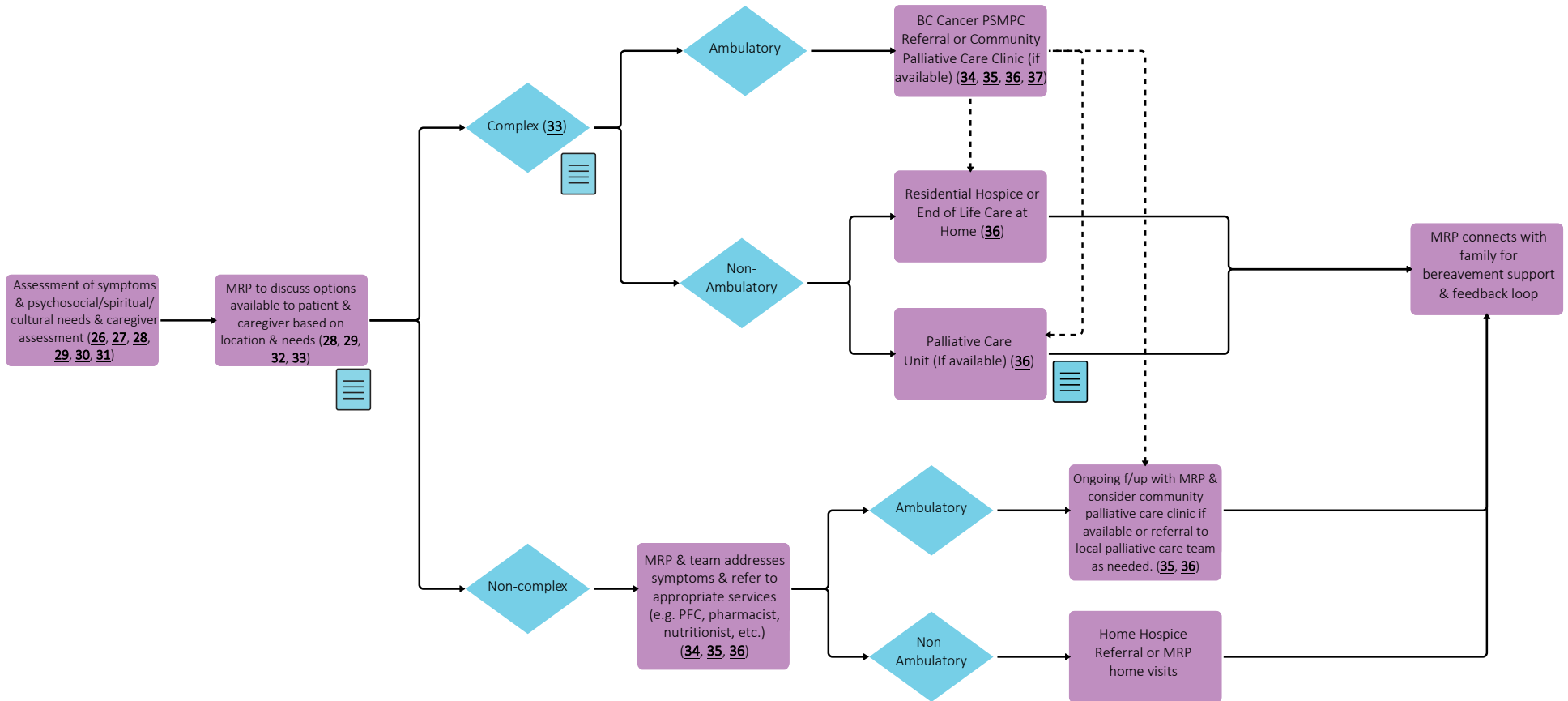


Throughout treatment, consider...

Regular symptom & performance status assessment ([12](#)); Oral Oncology/dentistry; Supportive care ([13, 14](#)); Sexual & reproductive health ([15, 16, 17](#)); Co-morbidity management & medication review; Risk factor mitigation; Clinical trials (where applicable) ([18](#)); Goals of care ([19](#)); Cultural safety ([2, 20, 21, 22](#)); Involvement of PCP; Consider referral to Hereditary Cancer Program based on pt's family history ([9](#))

## End of Life Care

*\*please click reference number to open associated hyperlinks*



Throughout treatment, consider...

Goals of Care Discussions & Consideration of Cultural Safety (2, 19, 20, 21, 22, 32, 33, 38, 39, 40, 41)

## Subject Matter Expert Working Group & COIs

**Richard Gagnon**, Project Lead, Medical Oncologist  
COI Pending

**Flavia DeAngleis**, Medical Oncologist  
COI pending

**Guangming Han**, Pathologist  
No disclosures

**Caroline Holloway**, Radiation Oncologist  
No disclosures

**Mairi Lucas**, Medical Oncologist  
GSK, Gilead, AstraZeneca, Eisai, Pfizer, Daiichi Sankyo

**Jessica McAlpine**, Gynecologist Oncologist  
GSK, Merck and Astra-Zeneca

**Nataliya Moldovan**, Radiation Oncologist  
No disclosures

**Shiraz Moola**, Obstetrician/Gynecologist  
No disclosures

**Andrea Neilson**, Gynecologist Oncologist  
COI pending

---

## Pathway Program Team

**Yashpal Bhatia**, Project Coordinator, Tumour Groups

**Amilya Ladak**, Manager, Tumour Groups

**James Loudon**, Interim Executive Director, Provincial Programs

**Kalina Nowaczek**, Policy Analyst, Tumour Groups

**Christine Simmons**, Tumour Group Council Chair

## Other Stakeholders

Family Practice & GPO

Indigenous Cancer Control

Nursing Community of Practice (NCoP)

Patient and Family Experience Team & Supportive Care

Radiation Therapists

Surgical Oncology Network

Provincial Pharmacy, Pathology & Medical Imaging Teams

## Appendix

1. <https://www.bccancer.bc.ca/health-professionals/clinical-resources/clinical-care-pathways/tumour-specific-pathways>
2. <https://www.phsa.ca/aboriginal-health-site/Documents/IPN%20Fillable%20Referral%20Form.pdf>
3. <https://cap.phsa.ca/>
4. <http://www.bccancer.bc.ca/health-professionals/clinical-resources/chemotherapy-protocols/gynecology>
5. <http://www.bccancer.bc.ca/systemic-therapy-site/Documents/Policy%20and%20Forms/Patient%20assistance%20programs.pdf>
6. <http://www.bccancer.bc.ca/books/Documents/Clinical%20Care%20Pathways/Patient%20Conference%20Order.pdf>
7. <http://www.bccancer.bc.ca/health-professionals/clinical-resources/pharmacy#Contact--info>
8. <https://www.healthlinkbc.ca/find-care/health-connect-registry>
9. <https://www.bccancer.bc.ca/health-professionals/clinical-resources/hereditary-cancer>
10. [https://www.bccancer.bc.ca/books/Documents/Gynecology/POLE%20testing%20form\\_20230718.pdf](https://www.bccancer.bc.ca/books/Documents/Gynecology/POLE%20testing%20form_20230718.pdf)
11. <https://www.bccancer.bc.ca/health-professionals-site/Documents/Patient-Referral-Form.pdf>
12. <https://www.uptodate.com/contents/image?imageKey=HEME%2F72901>
13. <https://www.bccancer.bc.ca/our-services/services/supportive-care>
14. <https://www.bccancer.bc.ca/our-services/services/support-programs>
15. <https://www.olivefertility.com/referring-physicians>
16. <https://www.pacificfertility.ca/resources/physician-resources>
17. <https://www.bccancer.bc.ca/health-info/coping-with-cancer/managing-symptoms-side-effects/sexual-health>
18. <https://www.bccrc.ca/dept/cid/clinical-trials>
19. <https://www.bccancer.bc.ca/new-patients-site/Documents/ACP-goals-of-care-orders.pdf>
20. <https://www.bccancer.bc.ca/our-services/services/indigenous-cancer-control>
21. <https://sanyas.ca/>
22. <https://centreforlearning.bcmhsus.ca/project/isar>
23. [https://www.international-journal-of-gynecological-cancer.com/article/S1048-891X\(25\)01077-1/fulltext](https://www.international-journal-of-gynecological-cancer.com/article/S1048-891X(25)01077-1/fulltext)
24. [https://www.nccn.org/guidelines/category\\_1](https://www.nccn.org/guidelines/category_1)
25. [guidelines.esgo.org/media/2025/09/ESGO-ESTRO-ESP-Guidelines-for-EC\\_LO-July-2025.pdf](https://guidelines.esgo.org/media/2025/09/ESGO-ESTRO-ESP-Guidelines-for-EC_LO-July-2025.pdf)
26. <http://www.bccancer.bc.ca/our-services/centres-clinics/bc-cancer-vancouver/epicc>
27. [https://www2.gov.bc.ca/assets/gov/health/practitioner-pro/bc-guidelines/palliative1\\_appendix\\_a.pdf](https://www2.gov.bc.ca/assets/gov/health/practitioner-pro/bc-guidelines/palliative1_appendix_a.pdf)
28. <https://www.bc-cpc.ca/publications/symptom-management-guidelines/>
29. <https://www2.gov.bc.ca/gov/content/health/practitioner-professional-resources/bc-guidelines/palliative-care>
30. <https://www2.gov.bc.ca/gov/content/health/practitioner-professional-resources/pharmacare/plans/plan-p-bc-palliative-care-benefits-program>
31. <http://www.bccancer.bc.ca/our-services/services/indigenous-cancer-control>
32. <http://www.bccancer.bc.ca/new-patients-site/Documents/SeriousIllnessConversationGuideCard.pdf>
33. <http://www.phsa.ca/health-info/medical-assistance-in-dying>

## Appendix

34. <http://www.bccancer.bc.ca/managing-symptoms-site/Documents/PSMPC-Referral-Form-for-All-BC-Cancer-Centres.pdf>
35. <http://www.bccancer.bc.ca/our-services/services/supportive-care/pain-symptom-management#What--we--do>
36. [https://vancouver.pathwaysbc.ca/service\\_categories/24](https://vancouver.pathwaysbc.ca/service_categories/24)
37. [http://www.bccancer.bc.ca/new-patients-site/Documents/MIPPC\\_Referral\\_Form.pdf](http://www.bccancer.bc.ca/new-patients-site/Documents/MIPPC_Referral_Form.pdf)
38. <https://www2.gov.bc.ca/assets/gov/people/seniors/health-safety/pdf/myvoice-advancecareplanningguide.pdf>
39. <https://www2.gov.bc.ca/gov/content/family-social-supports/seniors/health-safety/advance-care-planning>
40. <http://www.bccancer.bc.ca/managing-symptoms-site/Documents/When-Life-Nearing-its-End.pdf>
41. <http://www.bccancer.bc.ca/new-patients-site/Documents/ACP-tips-for-oncology-professionals.pdf>
42. <http://www.bccancer.bc.ca/health-professionals/clinical-resources/smoking-cessation-program>
43. <https://www.bccancer.bc.ca/prevention/alcohol/reduce-your-risk>
44. <http://www.phsa.ca/health-professionals/professional-resources/language-services/translation>
45. <http://www.bccancer.bc.ca/our-services/services/library>