

Primary Care Practitioners
(Family Practice)

Indigenous Cancer Care (30, 47, 48)

Supportive Care

(Counselling, Psychiatry, Nutrition, Speech Language Pathology, Physiotherapy, Pain & Symptom Management/Palliative Care)

This figure represents a general pathway of care that most people with cancer will experience. It shows

- The major phases of a cancer journey
- How a person might progress through each phase
- Key supportive services that are available throughout each person's cancer journey

Please visit the [Clinical Pathways Web](#) page for

- Tumour Group Clinical Pathways
- Patient Companion Guide
- Methodology Reports

Target Population

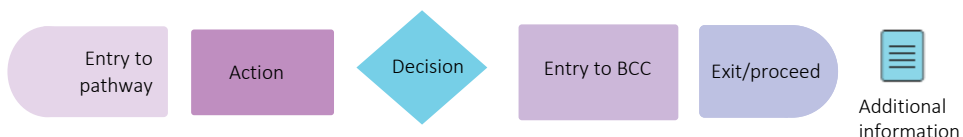
The target population for this pathway include health care providers such as primary care practitioners, oncologists, specialists, nurses, and other members of a health care team including allied health providers. Healthcare administrators across BC Cancer and the health authorities may also benefit from this resource for systems and operational planning.

Pathway Disclaimer

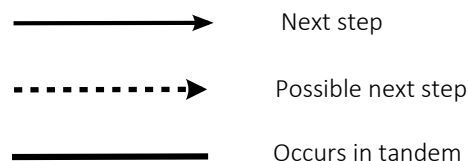
This pathway is an informational resource, intended to provide a high-level overview of the treatment journey a patient in British Columbia may receive. This pathway is not a substitute for medical advice and clinical judgment is still required as not all care trajectories will follow the proposed steps outlined in the pathway. This resource may not reflect all available evidence as research continues to evolve rapidly and BC Cancer is not responsible for any incomplete information. Furthermore, BC Cancer and those involved in developing this pathway are not liable for any incidental or consequential outcomes related to the information in this pathway. Anyone using the information provided in this pathway does so at their own risk.

Pathway Map Legend

Shape Guide



Line Guide



Pathway Map Considerations

This pathway is intended as a high-level resource and therefore does not include specific recommendations on specific systemic therapy protocols or radiation therapy doses. Instead, additional information can be sought via the inserted hyperlinks to resources that may aid a clinician in their treatment planning. The level of detail for each pathway was guided by the tumor group lead and intentionally kept high-level and represents the overall ideal pathway of care for a patient in general. Each patient will have individual needs and each cancer centre may have variation in the way care is delivered, but overall the intent was to represent the pathway that the majority of patients will follow.

General Resources

Indigenous Patient Navigator Referral Form (2): <http://www.phsa.ca/aboriginal-health-site/Documents/IPN%20Fillable%20Referral%20Form.pdf>
Supportive Care (15): <http://www.bccancer.bc.ca/our-services/services/supportive-care>
Compassionate Access Program (CAP) (3): <https://cap.phsa.ca/>
Testes Chemotherapy Protocols (4): <https://www.bccancer.bc.ca/health-professionals/clinical-resources/chemotherapy-protocols/genitourinary#Testicular>
Manufacturer Patient Assistance Programs (5): <http://www.bccancer.bc.ca/systemic-therapy-site/Documents/Policy%20and%20Forms/Patient%20assistance%20programs.pdf>
BC Cancer Research Clinical Trials (18): <https://www.bccrc.ca/dept/cid/clinical-trials>
European Association of Urology (EAU) Testicular Cancer Guidelines (12): <https://uroweb.org/guidelines/testicular-cancer>
Canadian Urological Association consensus guideline: Management of testicular germ cell cancer (41): <https://cuaj.ca/index.php/journal/article/view/7945>
Smoking Cessation Program (6): <http://www.bccancer.bc.ca/health-professionals/clinical-resources/smoking-cessation-program>
Alcohol Reduction (7): <https://www.bccancer.bc.ca/prevention/alcohol/reduce-your-risk>
MDC Referral Form (20): <http://www.bccancer.bc.ca/books/Documents/Clinical%20Care%20Pathways/Patient%20Conference%20Order.pdf>
Pharmacy Contact Info (8): <http://www.bccancer.bc.ca/health-professionals/clinical-resources/pharmacy#Contact--info>
Language & Translation Services (42): <http://www.phsa.ca/health-professionals/professional-resources/language-services/translation>
BC Cancer Library (43): <http://www.bccancer.bc.ca/our-services/services/library>
Health Connect Registry (44): <https://www.healthlinkbc.ca/find-care/health-connect-registry>
Adolescent & Young Adult Cancer Care & Support (45): <https://www.bccancer.bc.ca/health-info/adolescent-young-adult>
Indigenous Cancer Control (30): <https://www.bccancer.bc.ca/our-services/services/indigenous-cancer-control>
San'yas Indigenous-Specific Anti-Racism Training (47): <https://sanyas.ca/>
Indigenous-Specific Anti-Racism (ISAR) Self-Directed Learning (48): <https://centreforlearning.bcmhsus.ca/project/isar>

Abbreviations

AFP: Alpha-feto protein
AUC: Area Under the Curve
BEP: Bleomycin Etoposide Cisplatin
CBC: Complete Blood Count
CIPN: Chemotherapy-Induced Peripheral Neuropathy
CT: Computed Tomography
CV: Cardiovascular
EP: Etoposide CISplatin
EOL: End of Life
(b)-hCG: (beta)-Human Chorionic Gonadotropin
HTN: Hypertension
LDH: Lactate dehydrogenase
LVI: Lymphovascular Invasion
MDC: Multidisciplinary Conference/Discussion
MRI: Magnetic Resonance Imaging
MRP: Most Responsible Provider
NED: No Evidence of Disease
NSGCT: Non-Seminoma Germ Cell Tumour
PET: Positron Emission Tomography
PCP: Primary Care Provider

PFC: Patient & Family Counseling
PSMPC: Pain & Symptom Management & Palliative Care
RPLND: Retroperitoneal Lymph Node Dissection
RT: Radiation Therapy
TIP: PACLitaxel, Ifosfamide, and CISplatin
TGCT: Testicular Germ Cell Tumour
VEIP: VinBLAstine, CISplatin, Ifosfamide and Mesna
VIP: Etoposide, Ifosfamide, and Cisplatin

Additional Information

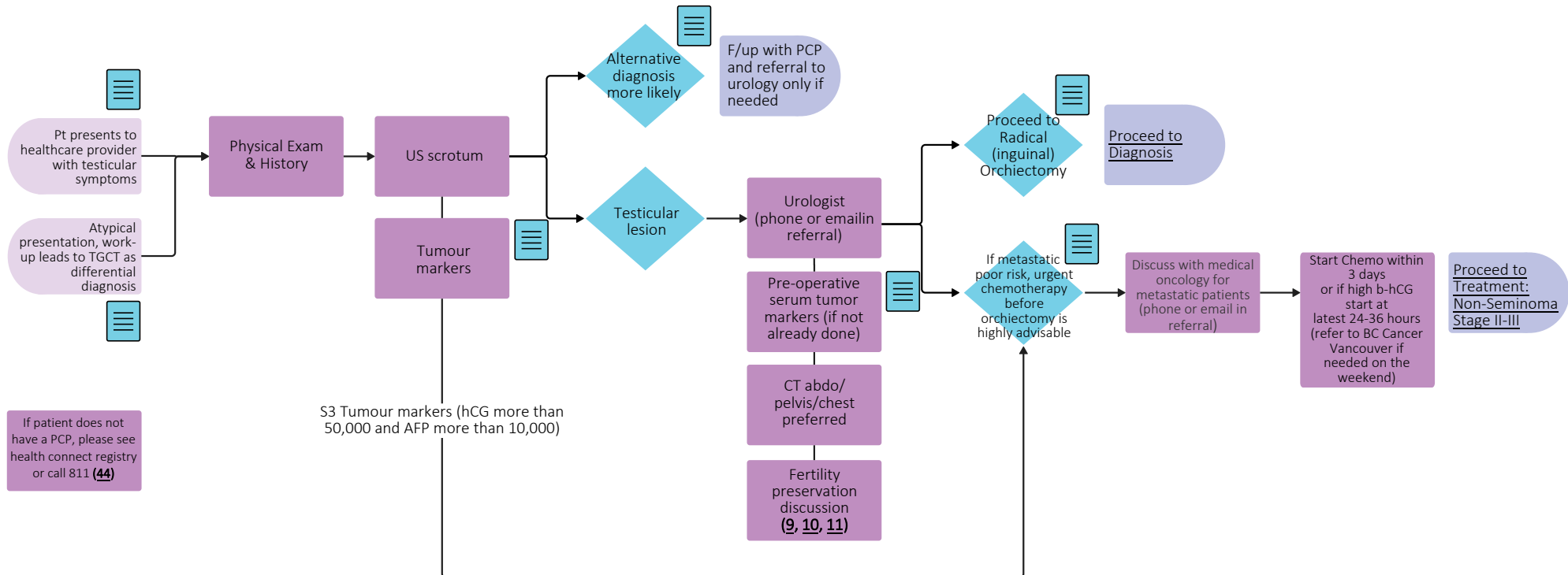
To learn more about how the Clinical Care Pathways are developed, visit the [Methodology Report](#).

Other Tumour Group Clinical Care Pathways can be found on the [BC Cancer Website](#).

This work was supported by grant funding provided by the Health System Redesign Program.

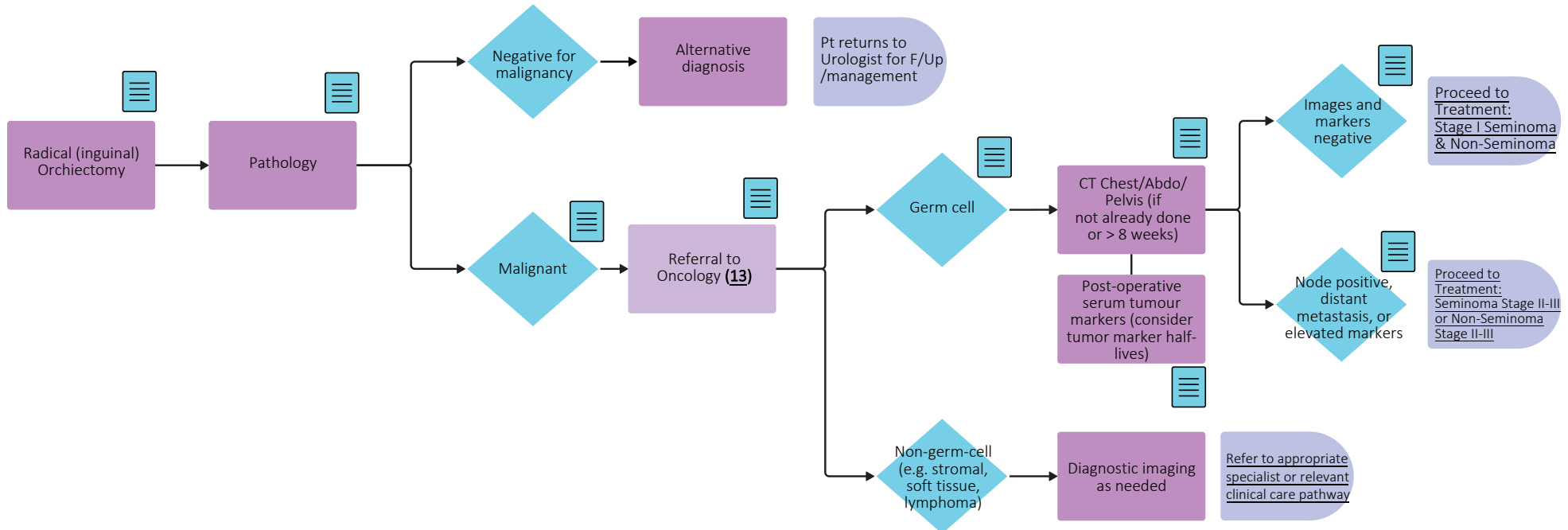
Pre-Diagnosis

**please click reference number to open associated hyperlinks*



Diagnosis (12)

**please click reference number to open associated hyperlinks*

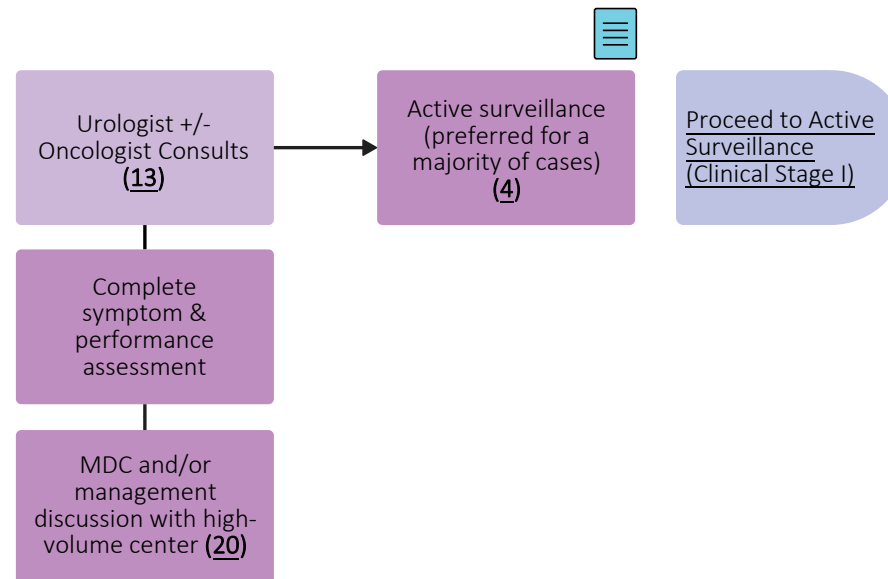


Throughout treatment, consider...

Regular symptom & performance status assessment(14); Oral oncology/dentistry; Supportive care(15,16); Sexual & reproductive health(9,10,17); Co-morbidity management & medication review; Risk factor mitigation; Clinical trials (where applicable)(18); Goals of care & shared decision making (19); Cultural safety(2, 30, 47, 48); Involvement of PCP; Discussion with high volume center; Notify BC Cancer of any therapy complications

Treatment: Stage I Seminoma & Non-seminoma

**please click reference number to open associated hyperlinks*

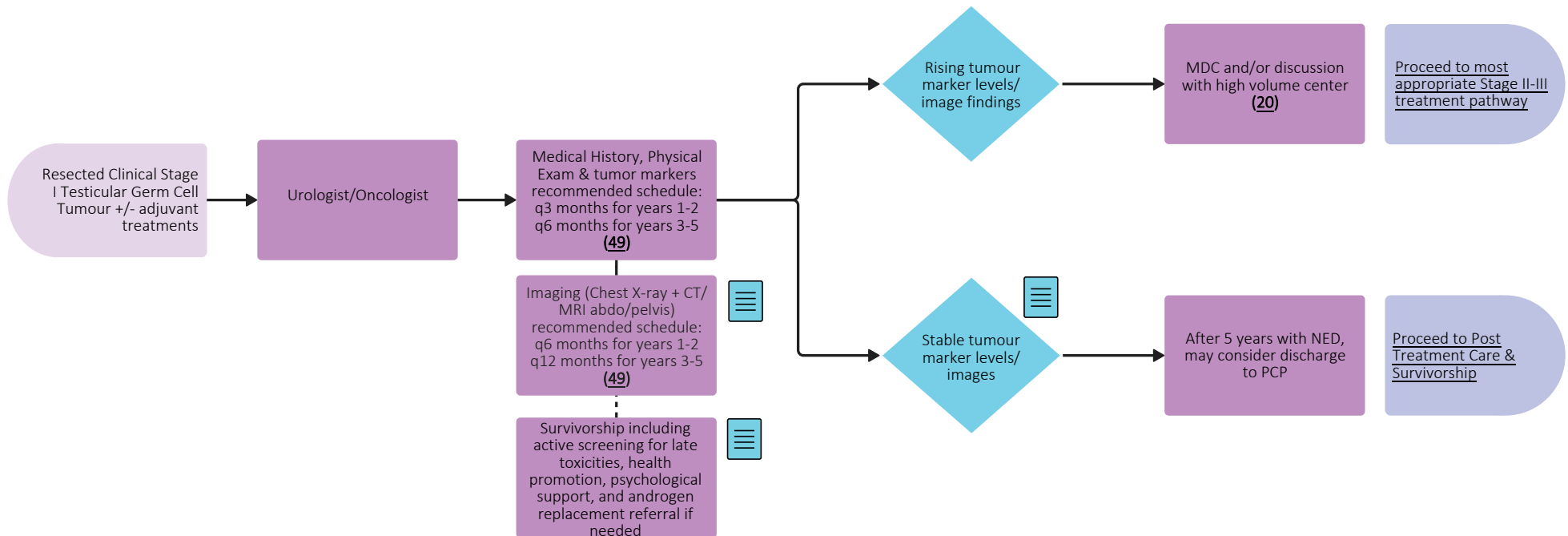


Throughout treatment, consider...

Regular symptom & performance status assessment [\(14\)](#); Oral oncology/dentistry; Supportive care [\(15,16\)](#); Sexual & reproductive health [\(9,10,17\)](#); Co-morbidity management & medication review; Risk factor mitigation; Clinical trials (where applicable) [\(18\)](#); Goals of care & shared decision making [\(19\)](#); Cultural safety [\(2, 30, 47, 48\)](#); Involvement of PCP; Discussion with high volume center; Notify BC Cancer of any therapy complications

Active Surveillance (Clinical Stage I)

**please click reference number to open associated hyperlinks*

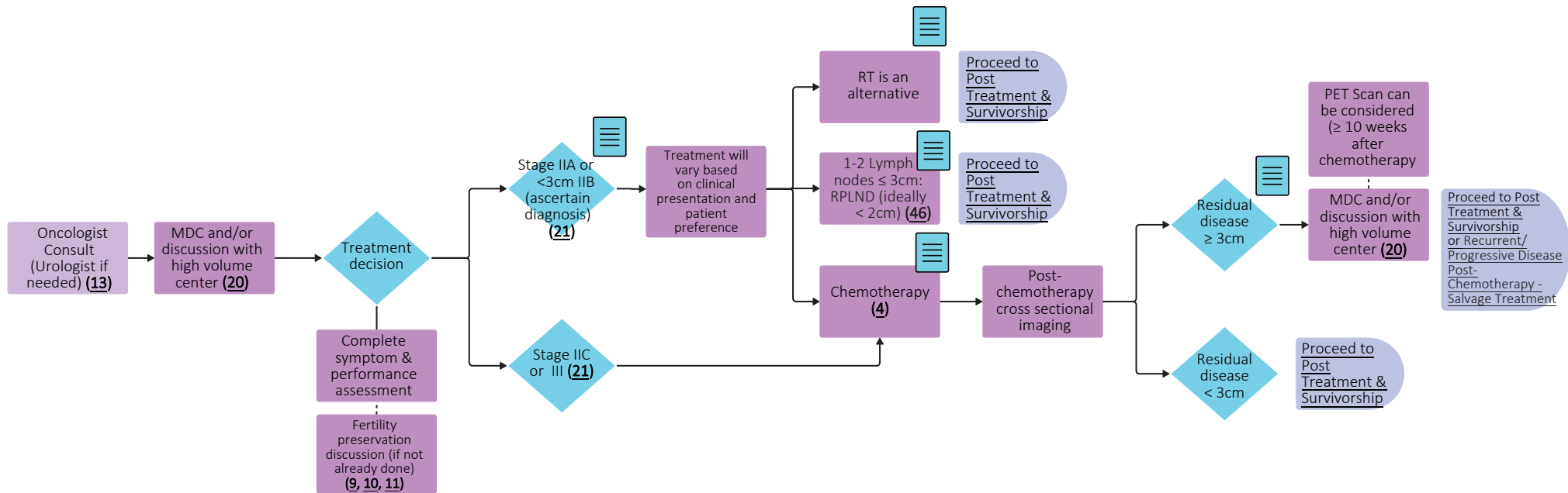


Throughout treatment, consider...

Regular symptom & performance status assessment (14); Oral oncology/dentistry; Supportive care (15,16); Sexual & reproductive health (9,10,17); Co-morbidity management & medication review; Risk factor mitigation; Clinical trials (where applicable)(18); Goals of care & shared decision making (19); Cultural safety (2, 30, 47, 48); Involvement of PCP; Discussion with high volume center; Notify BC Cancer of any therapy complications

Treatment: Seminoma Stage II-III

**please click reference number to open associated hyperlinks*

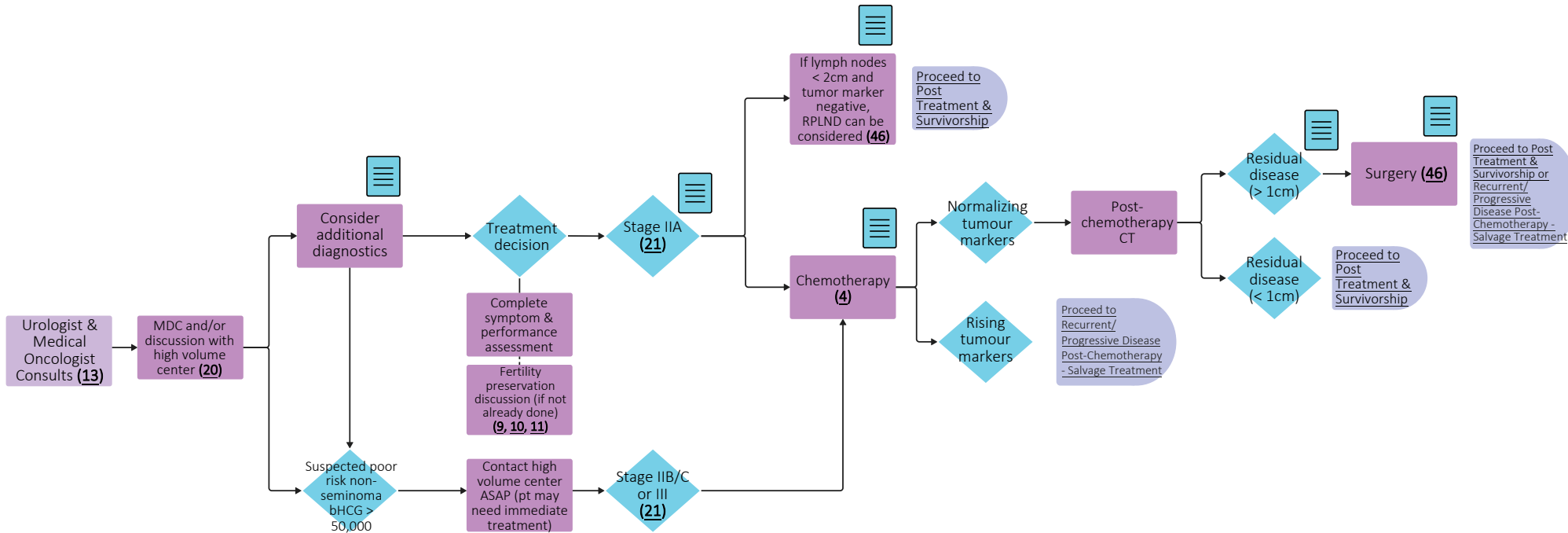


Throughout treatment, consider...

Regular symptom & performance status assessment (14); Oral oncology/dentistry; Supportive care (15, 16); Sexual & reproductive health (9, 10, 17); Co-morbidity management & medication review; Risk factor mitigation; Clinical trials (where applicable) (18); Goals of care & shared decision making (19); Cultural safety (2, 30, 47, 48); Involvement of PCP; Discussion with high volume center; Notify BC Cancer of any therapy complications

Treatment: Non-Seminoma Stage II-III

**please click reference number to open associated hyperlinks*

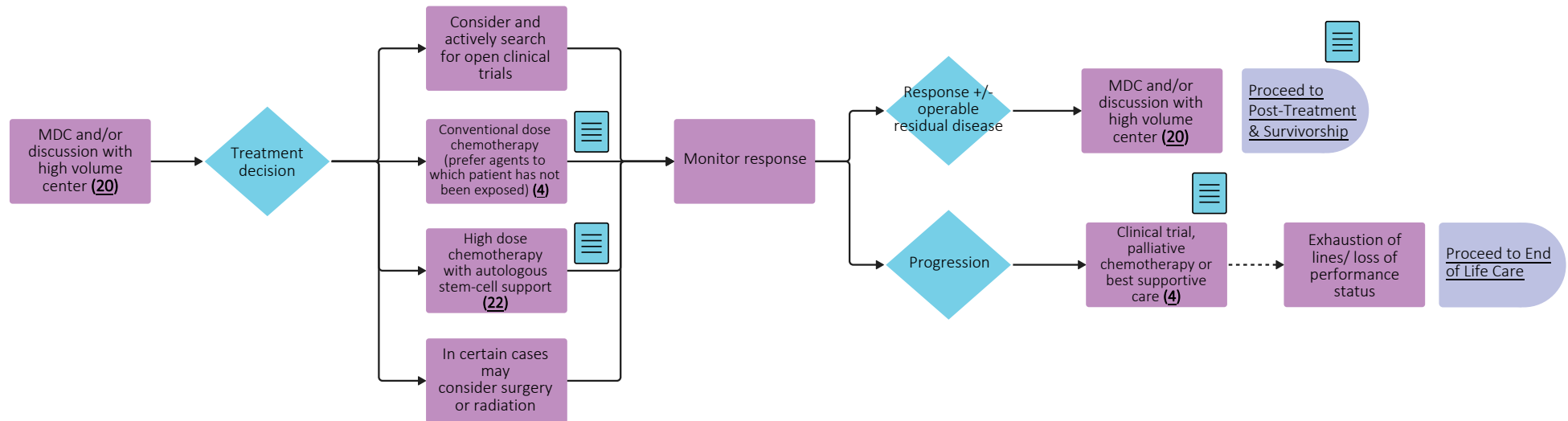


Throughout treatment, consider...

Regular symptom & performance status assessment (14); Oral oncology/dentistry; Supportive care (15,16); Sexual & reproductive health (9,10,17); Co-morbidity management & medication review; Risk factor mitigation; Clinical trials (where applicable)(18); Goals of care & shared decision making (19); Cultural safety (2, 30, 47, 48); Involvement of PCP; Discussion with high volume center; Notify BC Cancer of any therapy complications

Recurrent/Progressive Disease Post-Chemotherapy - Salvage Treatment

**please click reference number to open associated hyperlinks*

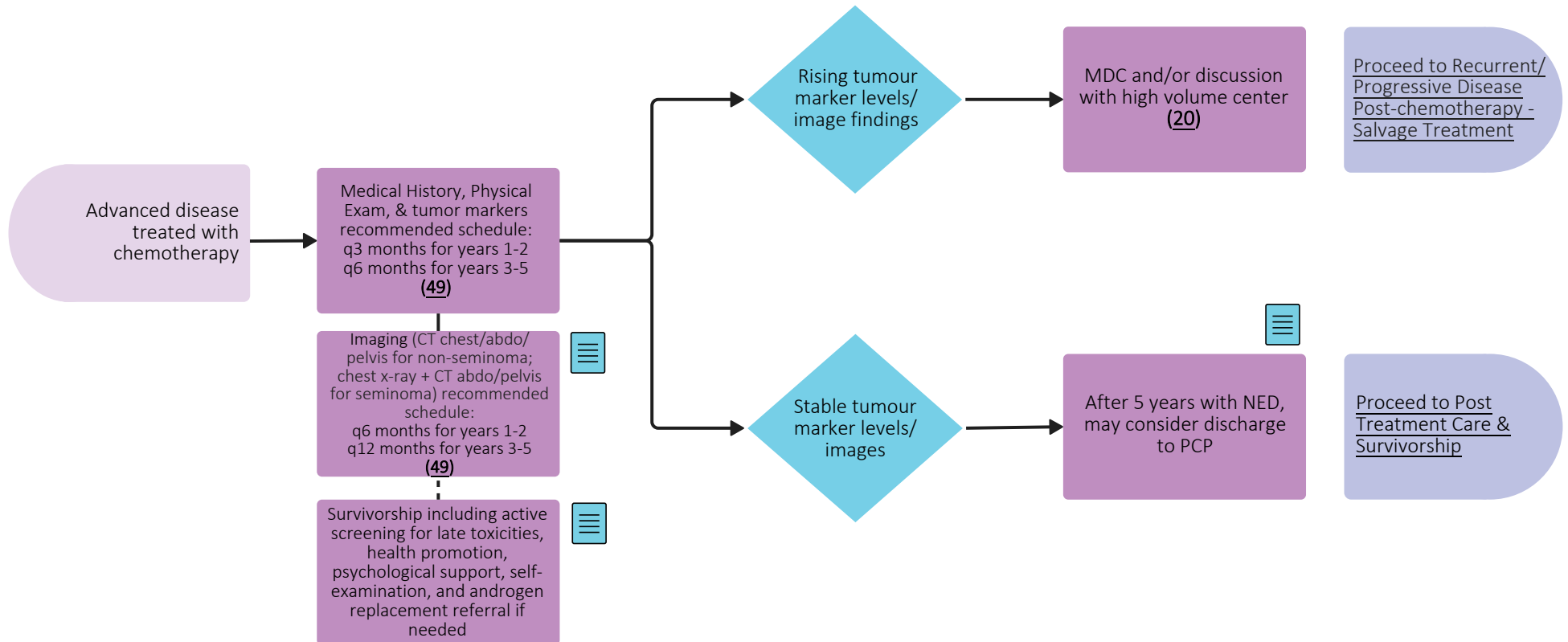


Throughout treatment, consider...

Regular symptom & performance status assessment (14); Oral oncology/dentistry; Supportive care (15, 16); Sexual & reproductive health (9, 10, 17); Co-morbidity management & medication review; Risk factor mitigation; Clinical trials (where applicable) (18); Goals of care & shared decision making (19); Cultural safety (2, 30, 47, 48); Involvement of PCP; Discussion with high volume center; Notify BC Cancer of any therapy complications

Follow-up post-treatment for metastatic disease, NED

**please click reference number to open associated hyperlinks*

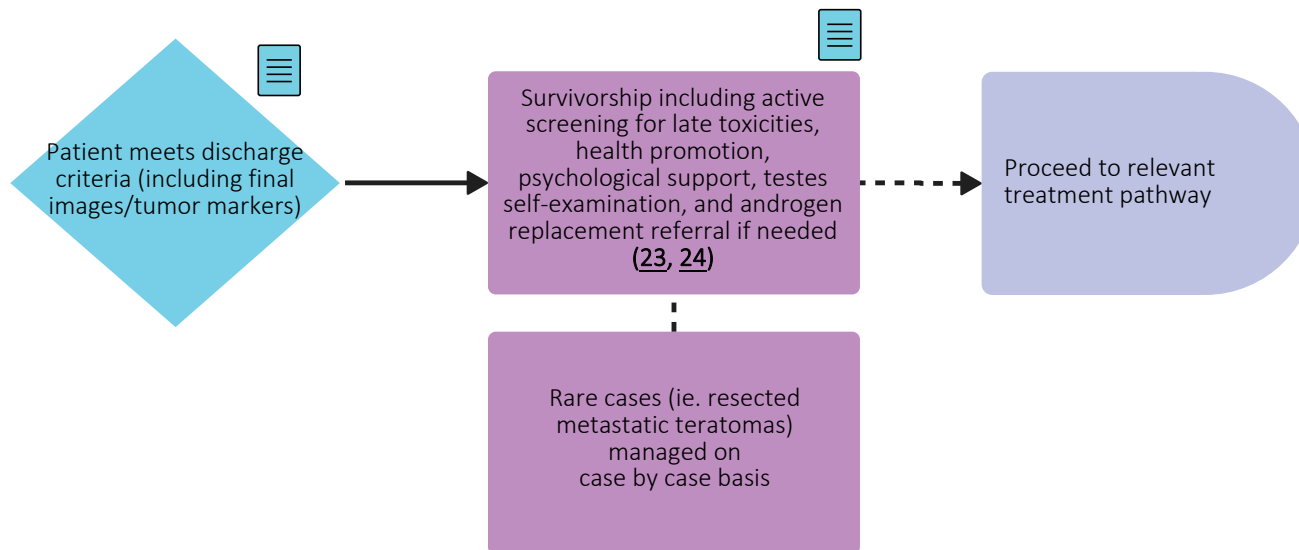


Throughout treatment, consider...

Regular symptom & performance status assessment (14); Oral oncology/dentistry; Supportive care (15, 16); Sexual & reproductive health (9, 10, 17); Co-morbidity management & medication review; Risk factor mitigation; Clinical trials (where applicable)(18); Goals of care & shared decision making (19); Cultural safety (2, 30, 47, 48); Involvement of PCP; Discussion with high volume center; Notify BC Cancer of any therapy complications

Post-Treatment Care & Survivorship (After 5 years)

**please click reference number to open associated hyperlinks*

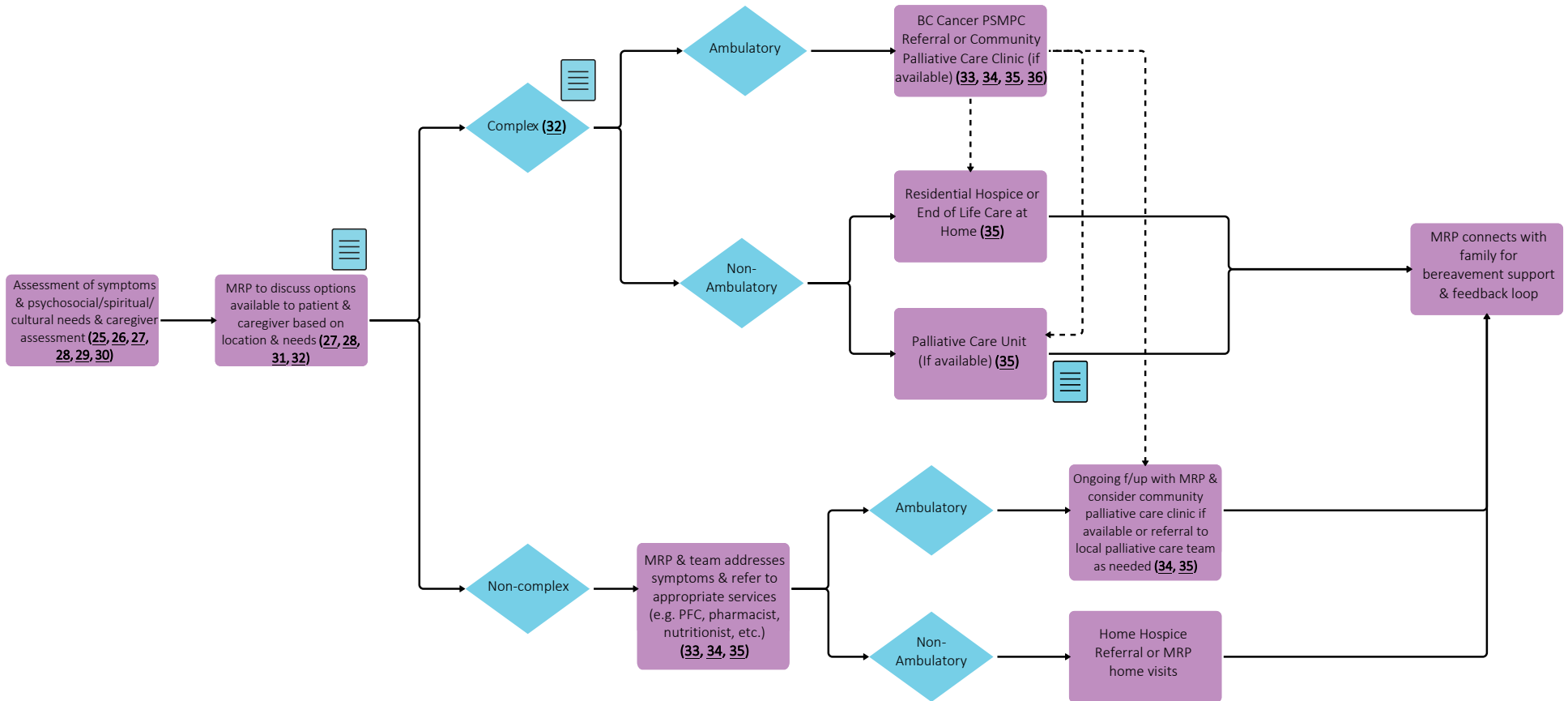


Throughout treatment, consider...

Regular symptom & performance status assessment ([14](#)); Oral oncology/dentistry; Supportive care ([15, 16](#)); Sexual & reproductive health ([9, 10, 17](#)); Co-morbidity management & medication review; Risk factor mitigation; Clinical trials (where applicable) ([18](#)); Goals of care & shared decision making ([19](#)); Cultural safety ([2, 30, 47, 48](#)); Involvement of PCP; Discussion with high volume center; Notify BC Cancer of any therapy complications

End of Life Care

**please click reference number to open associated hyperlinks*



Throughout treatment, consider...

Goals of Care Discussions & Consideration of Cultural Safety (2, 19, 30, 31, 32, 37, 38, 39, 40, 47, 48)

Subject Matter Expert Working Group & COIs

Christian Kollmannsberger, Project Lead, Medical Oncologist
No disclosures

Mateus Claro, Project Lead, Medical Oncologist
No disclosures

Lucia Nappi, Medical Oncologist
Pfizer, Ipsen, Bayer, Tersera

Jack Zheng, Radiation Oncologist
Bayer, TerSera, Tolmar

Scott Tyldesley, Radiation Oncologist
No disclosures

Marie-Pier St-Laurent, Urologic Oncologist
Bayer, EMD Sereno and TerSera

Mark Dawidek, Urologic Oncologist
No disclosures

Gang Wang, Pathologist
No disclosures

Ren Yuan, Oncology Radiologist
No disclosures

Pathway Program Team

Yashpal Bhatia, Project Coordinator, Tumour Groups
Tammy Currie, Executive Director, Provincial Programs
Amilya Ladak, Manager, Tumour Groups
James Loudon, Director, Provincial Programs
Kalina Nowaczek, Policy Analyst, Tumour Groups
Christine Simmons, Tumour Group Council Chair

Other Stakeholders

Family Practice & GPO
Indigenous Cancer Control
Nursing Community of Practice (NCoP)
Patient and Family Experience Team & Supportive Care
Radiation Therapists
Surgical Oncology Network
Provincial Pharmacy, Pathology & Medical Imaging Teams

Appendix

- 1 <http://www.bccancer.bc.ca/health-professionals/professional-resources/clinical-care-pathways>
- 2 <http://www.phsa.ca/aboriginal-health-site/Documents/IPN%20Fillable%20Referral%20Form.pdf>
- 3 <https://cap.phsa.ca/>
- 4 <https://www.bccancer.bc.ca/health-professionals/clinical-resources/chemotherapy-protocols/genitourinary#Testicular>
- 5 <http://www.bccancer.bc.ca/systemic-therapy-site/Documents/Policy%20and%20Forms/Patient%20assistance%20programs.pdf>
- 6 <http://www.bccancer.bc.ca/health-professionals/clinical-resources/smoking-cessation-program>
- 7 <https://www.bccancer.bc.ca/prevention/alcohol/reduce-your-risk>
- 8 <http://www.bccancer.bc.ca/health-professionals/clinical-resources/pharmacy#Contact--info>
- 9 <https://www.olivefertility.com/referring-physicians>
- 10 <https://www.pacificfertility.ca/resources/physician-resources>
- 11 <https://pathwaysbc.ca/login#eyJ0YWJzIjpw7fSwic2VsZWNOZWRUYWJLZXkiOiJjbGluaWNzIn0>
- 12 <https://uroweb.org/guidelines/testicular-cancer>
- 13 <https://www.bccancer.bc.ca/health-professionals-site/Documents/Patient-Referral-Form.pdf>
- 14 <https://www.uptodate.com/contents/image?imageKey=HEME%2F72901>
- 15 <https://www.bccancer.bc.ca/our-services/services/supportive-care>
- 16 <https://www.bccancer.bc.ca/our-services/services/support-programs>
- 17 <https://www.bccancer.bc.ca/health-info/coping-with-cancer/managing-symptoms-side-effects/sexual-health>
- 18 <https://www.bccrc.ca/dept/cid/clinical-trials>
- 19 <https://www.bccancer.bc.ca/new-patients-site/Documents/ACP-goals-of-care-orders.pdf>
- 20 <https://www.bccancer.bc.ca/books/Documents/Clinical%20Care%20Pathways/Patient%20Conference%20Order.pdf>
- 21 <https://uroweb.org/guidelines/testicular-cancer/chapter/staging-amp-classification-systems>
- 22 <https://www.leukemiabmtprogram.org/>
- 23 <https://cua.org/sites/default/files/Professional-Development/SECTION%203%20FILES/8009.pdf>
- 24 <https://pubmed.ncbi.nlm.nih.gov/40324110/>
- 25 <http://www.bccancer.bc.ca/our-services/centres-clinics/bc-cancer-vancouver/epicc>
- 26 https://www2.gov.bc.ca/assets/gov/health/practitioner-pro/bc-guidelines/palliative1_appendix_a.pdf
- 27 <https://www.bc-cpc.ca/publications/symptom-management-guidelines/>
- 28 <https://www2.gov.bc.ca/gov/content/health/practitioner-professional-resources/bc-guidelines/palliative-care>
- 29 <https://www2.gov.bc.ca/gov/content/health/practitioner-professional-resources/pharmacare/plans/plan-p-bc-palliative-care-benefits-program>
- 30 <http://www.bccancer.bc.ca/our-services/services/indigenous-cancer-control>
- 31 <http://www.bccancer.bc.ca/new-patients-site/Documents/SeriousIllnessConversationGuideCard.pdf>
- 32 <http://www.phsa.ca/health-info/medical-assistance-in-dying>
- 33 <http://www.bccancer.bc.ca/managing-symptoms-site/Documents/PSMPC-Referral-Form-for-All-BC-Cancer-Centres.pdf>

Appendix

- 34 <http://www.bccancer.bc.ca/our-services/services/supportive-care/pain-symptom-management#What--we--do>
- 35 https://vancouver.pathwaysbc.ca/service_categories/24
- 36 http://www.bccancer.bc.ca/new-patients-site/Documents/MIPPC_Referral_Form.pdf
- 37 <https://www2.gov.bc.ca/assets/gov/people/seniors/health-safety/pdf/myvoice-advancecareplanningguide.pdf>
- 38 <https://www2.gov.bc.ca/gov/content/family-social-supports/seniors/health-safety/advance-care-planning>
- 39 <https://www.bccancer.bc.ca/managing-symptoms-site/Documents/When-Life-Nearing-its-End.pdf>
- 40 <https://www.bccancer.bc.ca/new-patients-site/Documents/ACP-tips-for-oncology-professionals.pdf>
- 41 <https://cuaj.ca/index.php/journal/article/view/7945>
- 42 <http://www.phsa.ca/health-professionals/professional-resources/language-services/translation>
- 43 <http://www.bccancer.bc.ca/our-services/services/library>
- 44 <https://www.healthlinkbc.ca/find-care/health-connect-registry>
- 45 <https://www.bccancer.bc.ca/health-info/adolescent-young-adult>
- 46 <https://urology.med.ubc.ca/patient-information/>
- 47 <https://sanyas.ca/>
- 48 <https://centreforlearning.bcmhsus.ca/project/isar>
- 49 <https://uroweb.org/guidelines/testicular-cancer/chapter/followup-after-curative-therapy>